



Welcome to the **COMMUNITY MEETING** for the **LONG BRIDGE PHASE II STUDY**

At this meeting you will learn about:

- † The scope of the current Phase II Study
- † Project history
- † Study area and general information
- † Study timeline and phasing
- † Next steps
- † How to contact us – we want to hear from you!



d. delivers

district department of transportation

LONG BRIDGE FACTS

- ◆ Two-track railroad bridge owned by CSX Transportation (CSXT)
- ◆ Serves CSXT freight, intercity passenger (AMTRAK), and commuter rail (Virginia Railway Express)



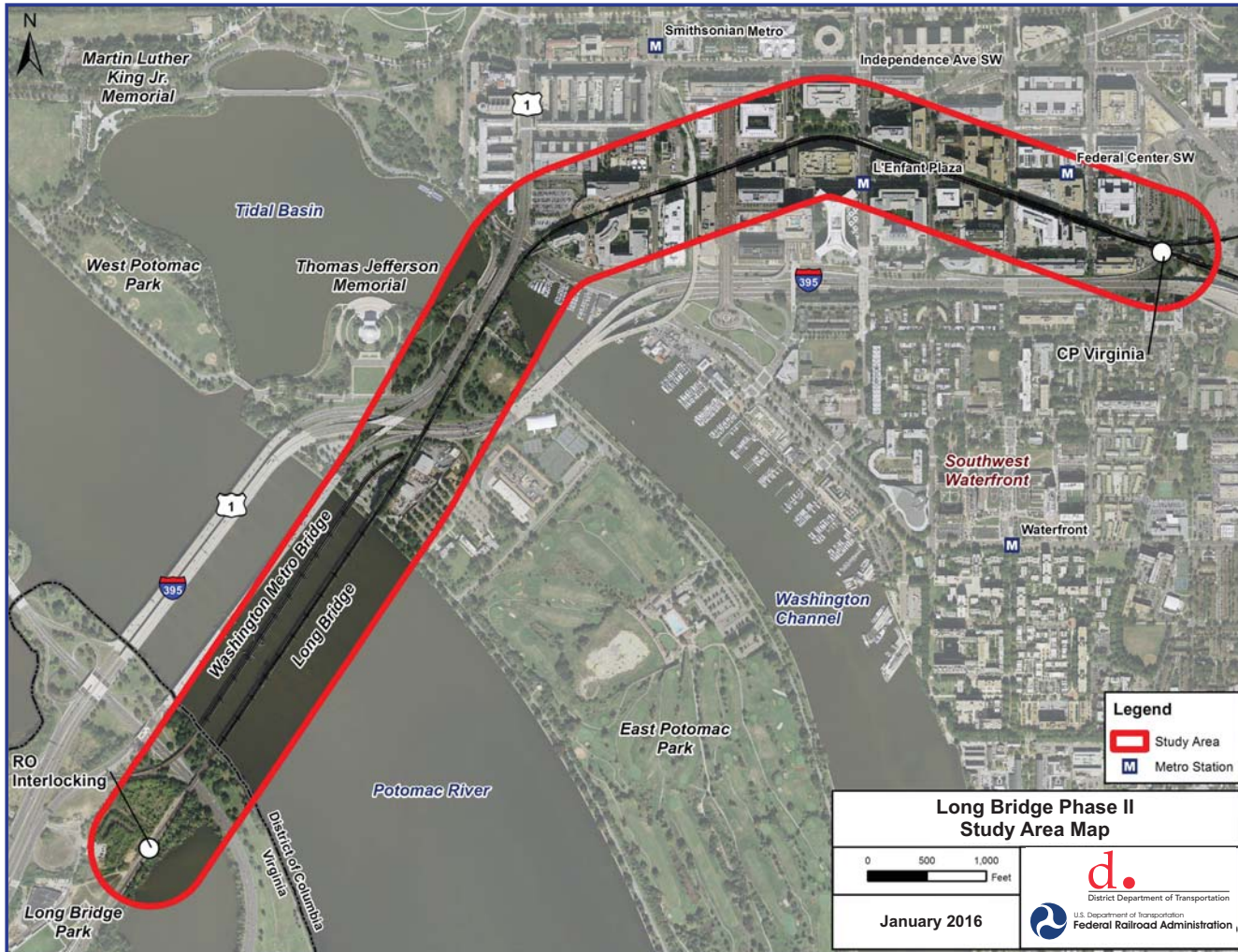
- ◆ Only railroad bridge across the Potomac River between Virginia and DC; therefore, is a major link to the Northeast Corridor
- ◆ Three tracks north and south of the bridge
- ◆ Constructed in 1904, last known movable-span operation in 1969
- ◆ Located in the Monumental Core

TRAINS PER DAY

	Existing	2040 Projection
CSXT	18	46
VRE	32	92
AMTRAK	24	46



STUDY AREA AND PROJECT LIMITS



The study area, 2.2 miles long, begins approximately 1,750 feet south of George Washington Parkway (RO interlocking) in Arlington, VA and extends northeast, along the existing CSXT rail alignment, near the I-395 split from I-695 (CP-Virginia interlocking) in the District of Columbia

POTENTIAL BENEFITS OF AN UPGRADED LONG BRIDGE

EXPANDED RAIL CAPACITY

- † Handle forecasted increase in freight and passenger services
- † Enhance regional mobility/connectivity
- † Compatibility with existing and future rail network



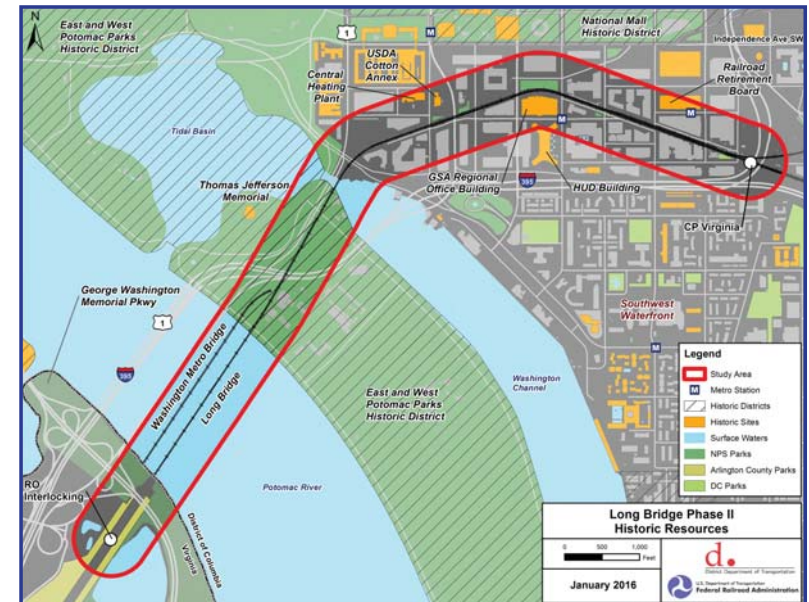
COMMUTER AND PASSENGER RAIL SERVICE IMPROVEMENT NEEDS

- † Increased frequency of service
- † Better and more reliable rail transportation options
- † Travel time savings = less time commuting



SITE CONCERNS

- ✦ Public Parks, Recreation Areas and Waterfowl/Wildlife Sanctuaries
- ✦ Historic Sites
- ✦ Rivers, Wetlands and Navigable Waters
- ✦ 100-Year Floodplain
- ✦ Runway Clear Zones
- ✦ General Habitat Conditions for Rare, Threatened and Endangered Species
- ✦ Landscapes and Aesthetics
- ✦ Right-of-Way Constraints



PROJECT BACKGROUND

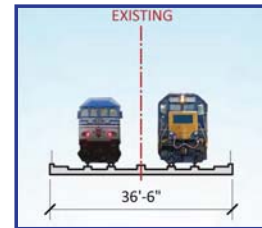
- ✦ The District Department of Transportation (DDOT) received an American Recovery and Reinvestment Act (ARRA) grant from the Federal Railroad Administration (FRA) to complete a preliminary analysis of the Long Bridge over the Potomac River



- ✦ The Phase I Study completed an initial identification of existing and future capacity needs for the Long Bridge
- ✦ The Phase II Study, currently underway, will expand on information gathered in Phase I to advance the initial National Environmental Policy Act (NEPA) effort for work related to the replacement or rehabilitation of the Long Bridge

WHAT WAS DONE IN PHASE I?

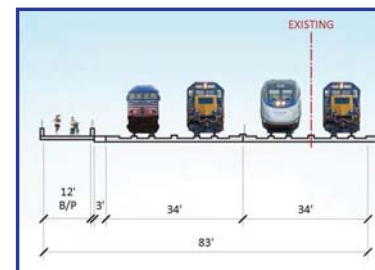
- ✦ Initial identification of existing and future capacity needs
- ✦ Developed eight conceptual alternatives:
 - Alt 1: No-Build
 - Alt 2: Two-Track Bridge (rehabilitation or reconstruction)
 - Alt 3: Four-Track Bridge
 - Alt 4: Four-Track Tunnel
 - Alt 5: Four-Track Bridge and Pedestrian/Bicycle
 - Alt 6: Four-Track Bridge with Pedestrian/Bicycle and Streetcar
 - Alt 7: Four-Track Bridge with Pedestrian/Bicycle and Shared Streetcar/General-Purpose Lanes
 - Alt 8: Four-Track Bridge with Pedestrian/Bicycle, Shared Streetcar/General-Purpose Lanes and Additional General-Purpose Lanes



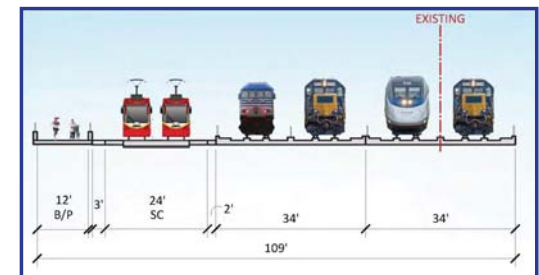
ALT 2



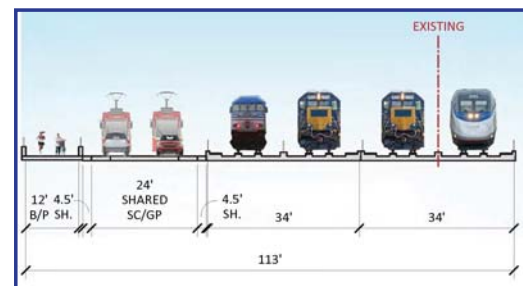
ALT 3 / ALT 4



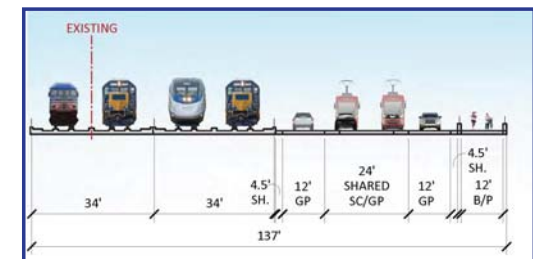
ALT 5



ALT 6



ALT 7



ALT 8

WHAT'S BEING DONE IN PHASE II



PROJECT SCHEDULE & WHAT'S NEXT

PHASE I	COMPLETED WINTER 2015
PHASE II	FALL 2015 - SUMMER 2016
Multi-Agency/Stakeholder Development of Long-Range Service Plan	November 2015 - March 2016
Draft Purpose and Need	Winter 2016
Publication of Notice of Intent to Prepare an EIS	Spring 2016
Public and Agency Scoping (Community Meeting #2)	Spring 2016
Preliminary Alternatives Development/ Environmental Inventory	Summer 2016
Presentation of Draft Purpose and Need and Preliminary Alternatives (Community Meeting #3)	Summer 2016
PHASE III	BEGINS FALL 2016
Draft EIS	Fall 2016 - Winter 2017
Draft EIS Public Hearing	Winter 2017
Final EIS/Record of Decision	Winter 2018

WE WANT TO HEAR FROM YOU!

- Community Meeting Survey available today!
- Visit the website: www.longbridgeproject.com
- Email: info@longbridgeproject.com
- Call: 202-671-2218
- Write: Anna Chamberlin, AICP, DDOT, 55 M Street, SE, Suite 400, Washington, DC 20003-3515



DDOT is committed to ensuring that no person is excluded from participation in, or denied the benefits of, its projects, programs, activities, and services on the basis of race, color, national origin, gender, age, or disability as provided by Title VI of the Civil Rights Act of 1964, the Americans with Disabilities Act and other related statutes. In accordance with the D.C. Human Rights Act of 1977, as amended, D.C. Official Code sec. 2-1401.01 et seq. (Act), the District of Columbia does not discriminate on the basis of actual or perceived: race, color, religion, national origin, sex, age, marital status, personal appearance, sexual orientation, gender identity or expression, familial status, family responsibilities, matriculation, political affiliation, genetic information, disability, source of income, status as a victim of an intrafamily offense, or place of residence or business. Sexual harassment is a form of sex discrimination which is prohibited by the Act. In addition, harassment based on any of the above protected categories is prohibited by the Act. Discrimination in a violation of the Act will not be tolerated. Violators will be subject to disciplinary action.