



National Historic Preservation Act Section 106 **Consulting Parties Meeting #5**

August 1, 2019



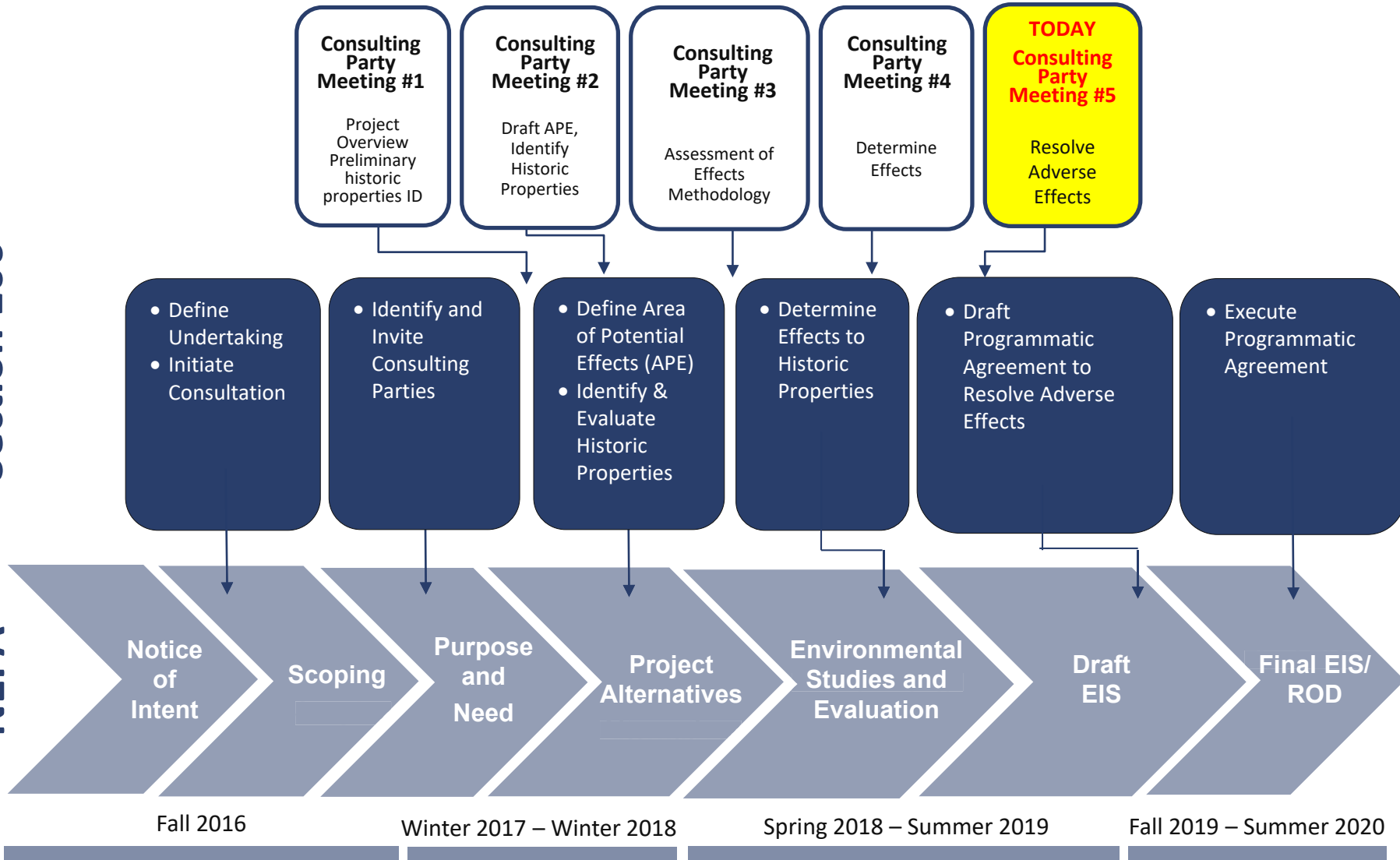
Meeting Agenda

- **Section 106 Process Update**
- **DEIS Update**
- **Review of APE and Historic Properties**
- **Review of Determination of Effects**
- **Potential Resolution of Adverse Effects**
- **Resolution Document and Next Steps**

Section 106 and NEPA Coordination

Section 106

NEPA

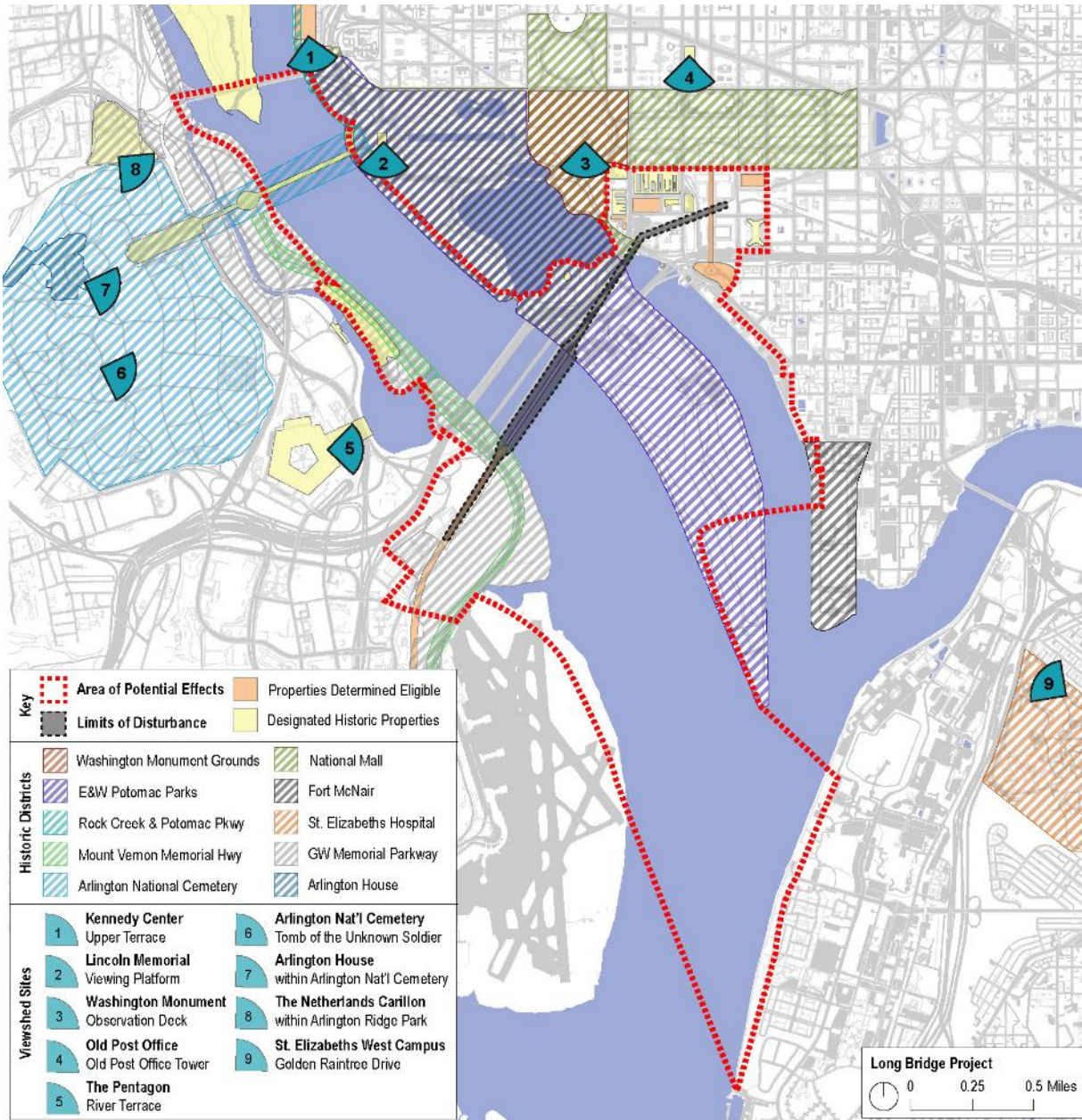


Selection of Preferred Alternative: Action Alternative A

FRA and DDOT selected **Action Alternative A** as the Preferred Alternative



- Action Alternative A has lower capital costs, shorter construction duration, and fewer impacts than Alternative B
- Selection of the Preferred Alternative occurred after consideration of all comments from agencies and the public on the Project to date

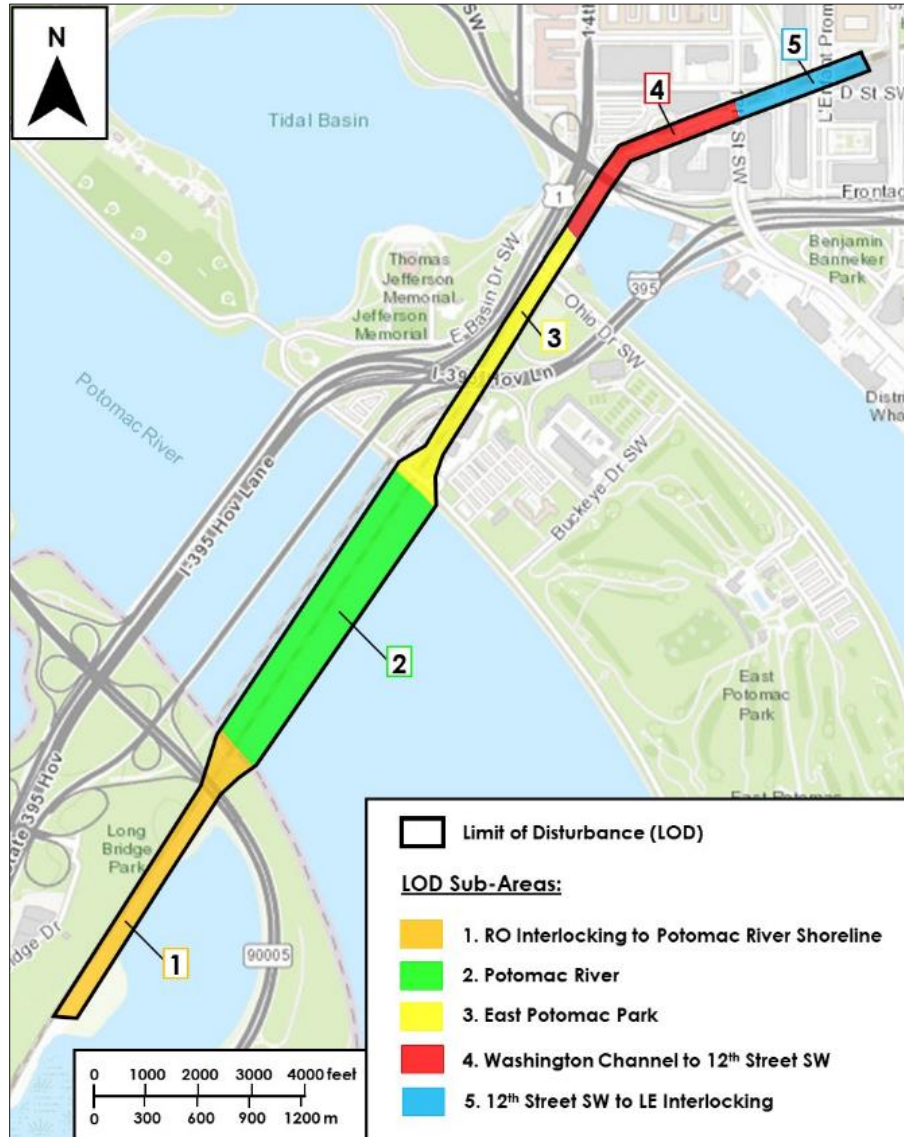


Identification of Historic Properties

Area of Potential Effects

Identification of Historic Properties

Phase IA Archaeological Assessment



Archaeology Next Steps

- Phase IA submitted to SHPOs
 - VDHR concurred 11/9/2018
 - DC SHPO concurred 11/19/2019
- Future ID and evaluation of archaeological resources accounted for in the Programmatic Agreement
- Prepare final design for Preferred Alternative
- Continue Section 106 consultation
- If adverse effects are identified, mitigate adverse effects

Determination of Effects

Summary of Adverse Effects Determination

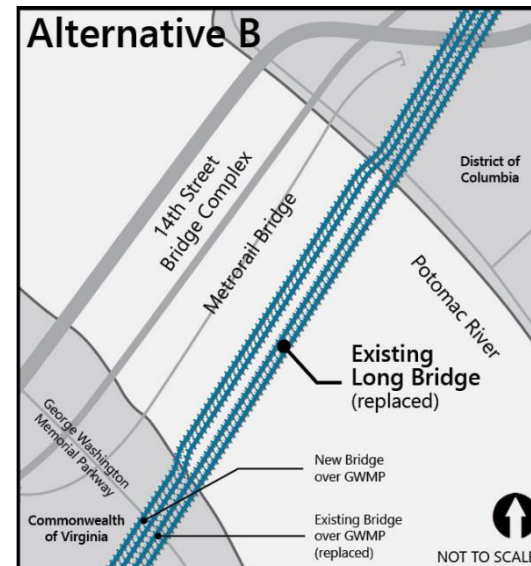
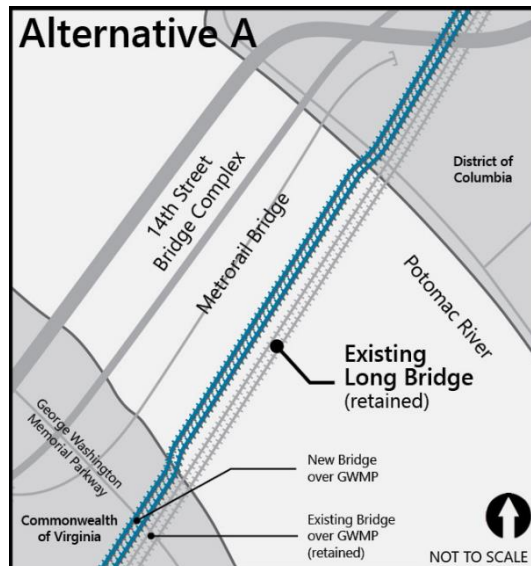
Historic Property	No Action Alternative	Action Alternative A	Action Alternative B	Cumulative Effects	Temporary Effects
National Mall <i>DC</i>	No Adverse Effect	No Adverse Effect	No Adverse Effect	No Adverse Effect	Indirect Adverse Effect
George Washington Memorial Parkway (GWMP) <i>VA/DC</i>	No Adverse Effect	Direct Adverse Effect	Direct and Indirect Adverse Effect	Direct Adverse Effect	Direct and Indirect Adverse Effect
Mount Vernon Memorial Highway (MVMH) <i>VA/DC</i>	No Adverse Effect	Direct Adverse Effect	Direct and Indirect Adverse Effect	Direct Adverse Effect	Direct and Indirect Adverse Effect
East and West Potomac Parks <i>DC</i>	No Adverse Effect	Direct and Indirect Adverse Effect	Direct and Indirect Adverse Effect	Direct and Indirect Adverse Effect	Direct and Indirect Adverse Effect

Avoidance Measures

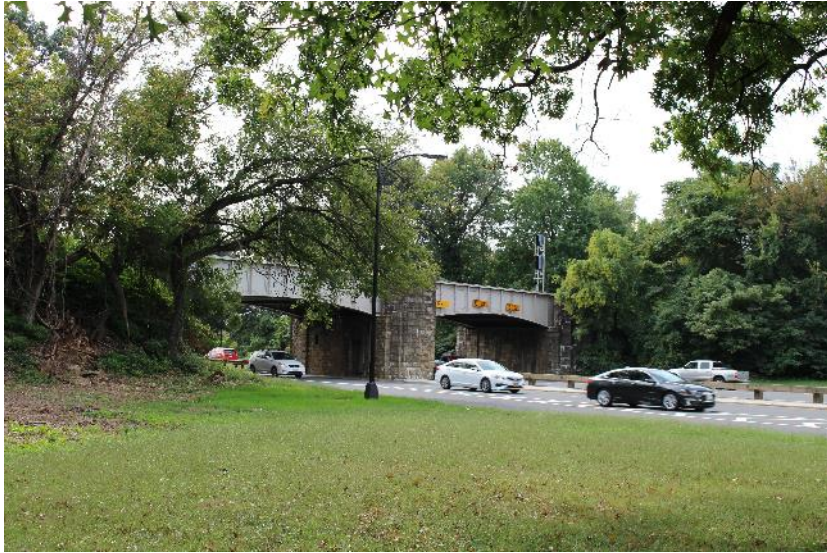
Adverse Effects Avoided: Removal of contributing resources (existing Long Bridge and railroad bridge over the GWMP) required in Action Alternative B

Avoidance

- Retain Long Bridge and GWMP railroad bridge (Action Alternative A)
- Dismissed alternatives outside of Long Bridge Corridor (did not meet Purpose and Need)



Resolution of Effects



- Adverse effects identified for the **National Mall, GWMP, MVMH, and East and West Potomac Parks** historic districts.
- Adverse effects will be resolved through appropriate minimization and mitigation measures documented in the Programmatic Agreement.
- FRA and DDOT are seeking input regarding minimization and mitigation measures from SHPOs and Consulting Parties

Minimization & Mitigation Measures

Design Review

Adverse Effects: Use of historic districts for construction access and staging; potential removal of contributing vegetation and mature trees; obstruction of views of the existing Long Bridge by the new bridge; and introduction of new elements into historic districts

Minimization

and

Mitigation

- Minimize physical and visual effects through review of alignment and aesthetics
- Continued consultation with DC SHPO, VDHR, and NPS
- Design Review to address at a minimum:
 - New railroad bridge design and engineering including structure type, vertical clearance, visual appearance of structural system, and alignment
 - Aesthetic treatment of new component bridges or other structures
 - Landscape design within LODs
 - Signage or lighting
 - Design of bike-ped crossing and associated ramps and trail connections
 - Construction staging and access procedures

Minimization & Mitigation Measures

Tree Protection Plan

Adverse Effects: Removal of contributing trees and vegetation



Minimization

- Staging areas, to the extent possible, located to minimize impacts to extant trees and vegetation
- Trees and vegetation to screen temporary construction staging areas
- To be executed within 2 years
- Plan to Include at a minimum:
 - Documentation of existing conditions
 - Quantification and illustrations of affected vegetation
 - Specs for protection of vegetation
 - Specs for replacement of trees and their caliper
 - Bibliography of existing historic and cultural landscape documentation

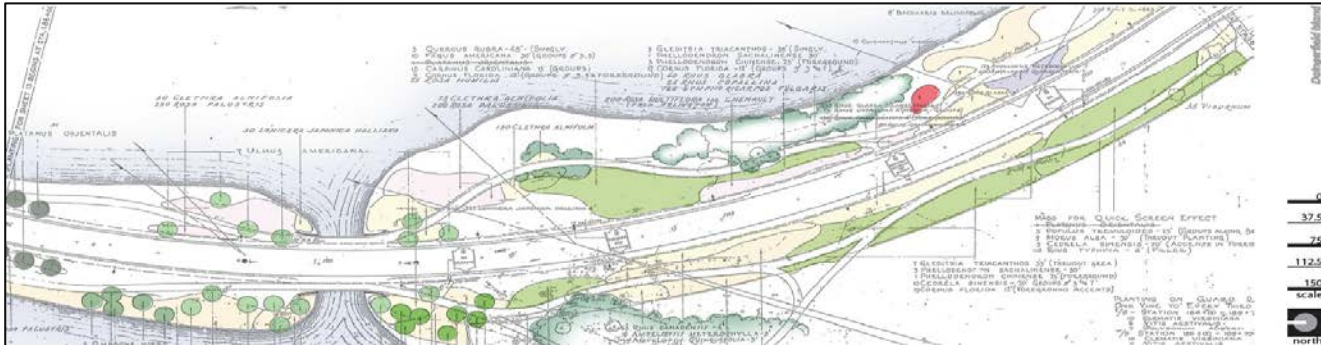
Minimization & Mitigation Measures

Tree Restoration Plan

Adverse Effects: Removal of contributing trees and vegetation and screening of new elements being introduced in the historic districts

Mitigation

- Provide monetary value to NPS to develop and implement plan. Plan will:
 - Account for equivalent amount of caliper trees affected and work required by NPS to reintroduce new trees
 - Be submitted within 1 year of the issuance of the *Tree Protection Plan*
- NPS to identify the appropriate replacement species alternatives where in-kind replacement is not feasible, as well as locations
- NPS responsible for the removal of invasive species and any associated archaeology required during the planting



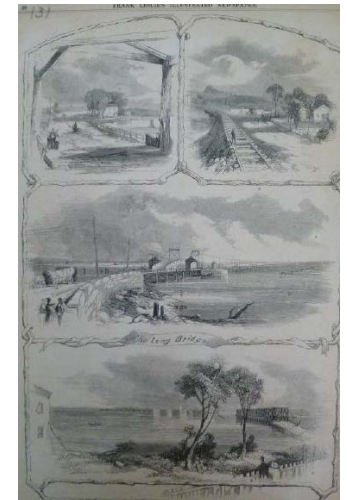
Minimization & Mitigation Measures

Interpretation Plan

Adverse Effects: New bridge would obstruct views of the existing Long Bridge, diminishing the visual integrity of it as a contributing structure

Mitigation

- Provide monetary value to NPS to prepare and implement an Interpretation Plan on the history of Long Bridge
- Information to be posted on the NPS website
- Physical placement of interpretive signs determined in consultation with DC SHPO, VDHR, and NPS



Minimization & Mitigation Measures

Viewshed Protection Plan

Adverse Effects: Visual changes to the GWM and potential removal of contributing vegetation and mature trees

Minimization

and

Mitigation

- Provide monetary value to NPS to prepare and implement a MVMH *Viewshed Protection Plan and Inventory and Assessment*
- Plan will:
 - Span Alexandria to Columbia Island
 - Be developed prior to completion of the preliminary engineering phase



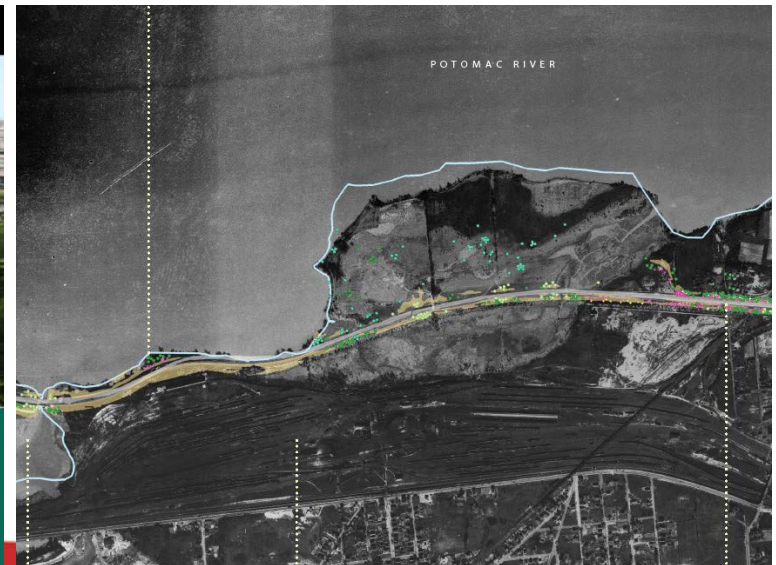
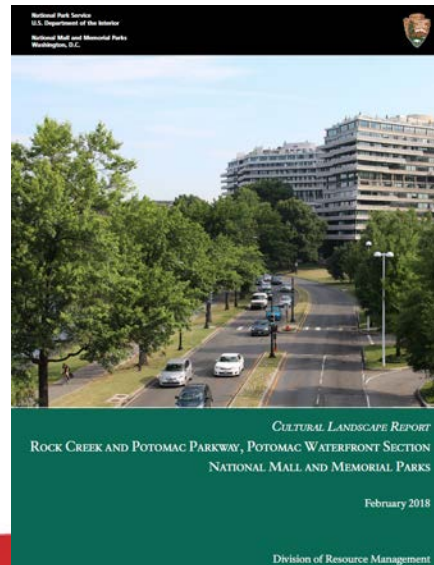
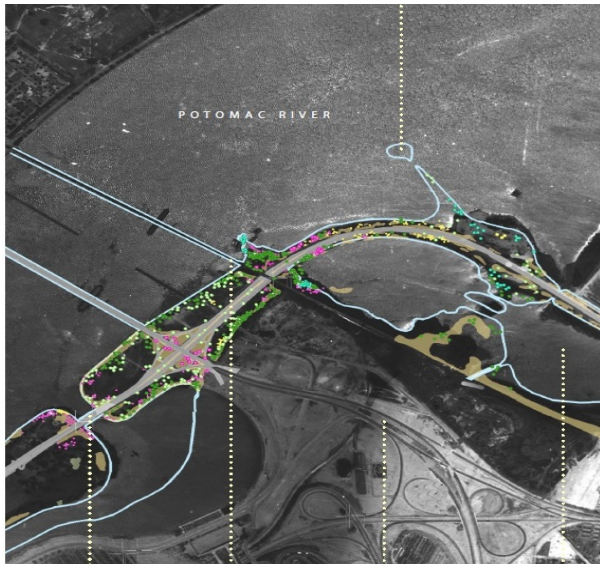
Minimization & Mitigation Measures

Cultural Landscape Inventories

Adverse Effects: Visual changes to the GWMP and East and West Potomac Parks and potential removal of contributing vegetation and mature trees

Mitigation

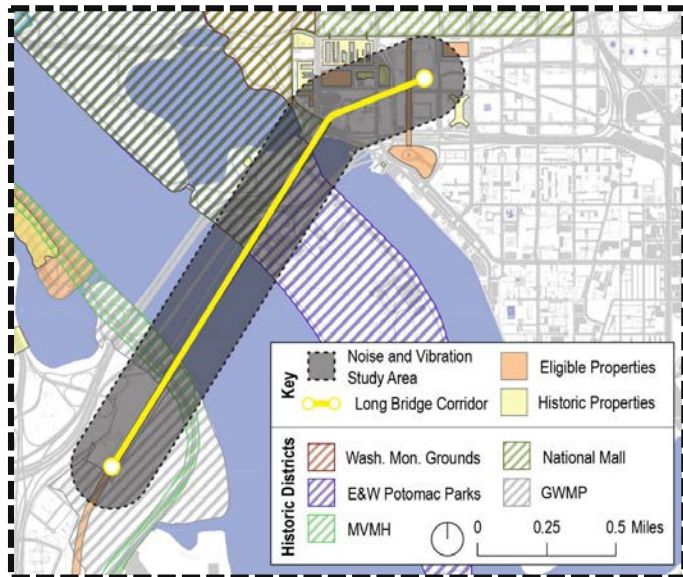
- Provide monetary value to NPS for the preparation of CLIs for:
 - MVMH from Alexandria to Columbia Island
 - East and West Potomac Parks from the Golf Course to the railroad corridor



Minimization & Mitigation Measures

Construction Management Plan

Adverse Effects: Construction activities, including construction-related staging, access, and noise and vibration would affect the National Mall, the MVMH, the GWMP, and East and West Potomac Parks historic districts



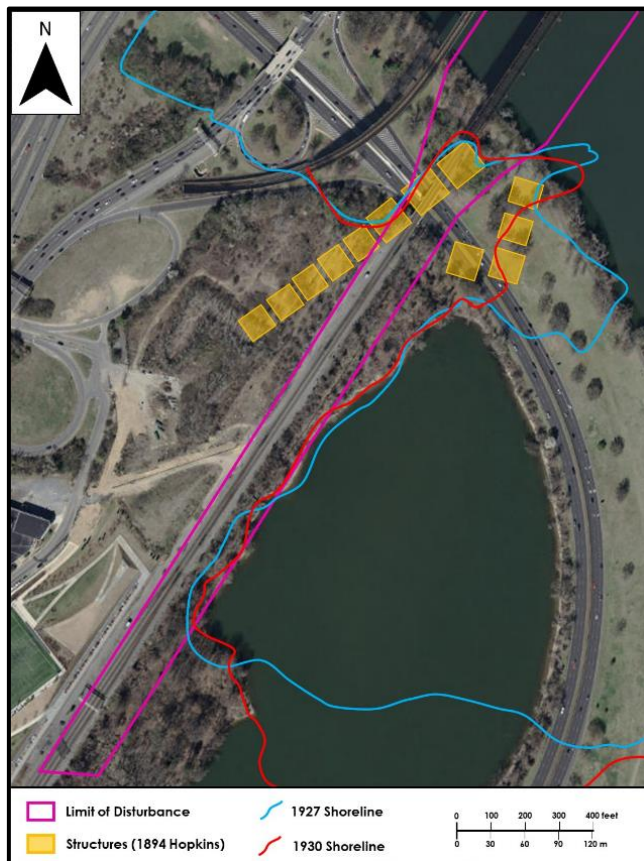
Minimization

- Develop and implement a *Noise and Vibration Control Plan*
- Ensure appropriate construction management throughout the @ 5-year construction period
- Locate construction staging areas away from sensitive views and viewsheds
- Limit the size of construction staging areas
- Appropriately screen construction staging areas

Minimization & Mitigation Measures

Archaeology

Adverse Effects: Potential adverse effects if eligible archaeological resources are determined within the LOD during phase identification and evaluation



Mitigation

If eligible archaeological resources are determined to be adversely effected within the LODs during phased identification and evaluation efforts:

- Mitigation will be determined in coordination with stakeholders and consulting parties

Summary of Potential Resolution

	Measures	Adverse Effect	Resource
Avoidance	Selection of Alternative A	Removal of Contributing Resource	GWMP
Minimization	Design Review	Introduction of contemporary features and structures into HDs	GWMP; MVMH; East and West Potomac Parks
	Tree Protection Plan	Potential removal of contributing trees and vegetation	GWMP; MVMH; East and West Potomac Parks; NAMA
	Viewshed Protection Plan	Obstruction of views of Long Bridge	GWMP; MVMH; East and West Potomac Parks
	Construction Management Plan	Use of historic districts for construction staging areas	GWMP; MVMH; East and West Potomac Parks; NAMA
Mitigation	Design Review	Introduction of contemporary features and structures into HDs	GWMP; MVMH; East and West Potomac Parks
	Tree Restoration Plan	Removal of contributing trees and vegetation and screening of new elements introduced into HDs	GWMP; MVMH; East and West Potomac Parks; NAMA
	Interpretation Plan	New bridge to obstruct views of existing Long Bridge	GWMP; MVMH; East and West Potomac Parks
	Viewshed Protection Plan	Visual changes to views and viewsheds	GWMP; MVMH; East and West Potomac Parks
	Cultural Landscape Inventories	Visual changes and potential removal of contributing trees and vegetation	GWMP; MVMH; East and West Potomac Parks
	Archaeology	ID/Eval of eligible archaeological resources are determined to be adversely effected	GWMP; MVMH; East and West Potomac Parks; Riverbed 18

Resolution Document

A Programmatic Agreement is in development and will be published as an attachment to the DEIS, to be made public September 2019.



The document is currently under review by DRPT, NPS, DC SHPO, and VDHR.

Next Steps

Resolve
Adverse
Effects

August 1, 2019: Consulting Party Meeting #5

- Review potential minimization, and mitigation strategies
- Discuss draft Programmatic Agreement (PA)
- *Comments on today's meeting are due **September 6, 2019.***

Fall 2019 - Winter/Spring 2020

- Develop and refine resolution strategies
- Finalize PA

Spring 2020: PA signed

Resolution
Document

Consulting Party Questions & Comments



Comments can be provided in multiple ways:

- At this meeting
- Website: www.longbridgeproject.com
- Email: info@longbridgeproject.com - **ENCOURAGED!**
- Correspondence addressed to:

Katherine Zeringue
Federal Preservation Officer
U.S. Department of Transportation
Federal Railroad Administration
1200 New Jersey Avenue SE
Washington, DC 20590