

**Appendix 3.7-A**  
**Special-Status Species and Observed Habitats**



**Attachment 1**  
 Special-Status Plant Species with Potential to Occur in the Project Vicinity

Scientific Name Common Name	Federal Status <sup>a</sup>	State Status <sup>b</sup>	CNPS <sup>c</sup>	BNSF Alternative	Corcoran Elevated Alternative	Corcoran Bypass Alternative	Allensworth Bypass Alternative	Wasco-Shafter Bypass Alternative	Bakersfield South Alternative	Heavy Maintenance Facilities <sup>d</sup>
<b>Alismataceae</b>										
<i>Sagittaria sanfordii</i> Sanford's arrowhead	--	--	List 1B.2	No Potential	No Potential	No Potential	No Potential	No Potential	No Potential	Fresno: No Potential KCH: No Potential KCGW: No Potential KCGSE: No Potential KCGSW: No Potential
<b>Apiaceae</b>										
<i>Eryngium spinosepalum</i> spiny-sepaled button-celery	--	--	List 1B.2	Moderate	Low	Low	Moderate	Low	Low	Fresno: Moderate KCH: Moderate KCGW: No Potential KCGSE: Low KCGSW: No Potential
<b>Asteraceae</b>										
<i>Cirsium crassicaule</i> slough thistle	--	--	List 1B.1	Moderate	Low	Low	Moderate	Low	Low	Fresno: Low KCH: Moderate KCGW: No Potential KCGSE: Low KCGSW: No Potential
<i>Heterotheca shevockii</i> Shevock's golden-aster	--	--	List 1B.3	No Potential	No Potential	No Potential	No Potential	No Potential	No Potential	Fresno: No Potential KCH: No Potential KCGW: No Potential KCGSE: No Potential KCGSW: No Potential

**Attachment 1**  
 Special-Status Plant Species with Potential to Occur in the Project Vicinity

Scientific Name Common Name	Federal Status <sup>a</sup>	State Status <sup>b</sup>	CNPS <sup>c</sup>	BNSF Alternative	Corcoran Elevated Alternative	Corcoran Bypass Alternative	Allensworth Bypass Alternative	Wasco-Shafter Bypass Alternative	Bakersfield South Alternative	Heavy Maintenance Facilities <sup>d</sup>
<i>Lasthenia glabrata</i> ssp. <i>coulteri</i> Coulter's goldfields	--	--	List 1B.1	Moderate	Low	Low	Moderate	Moderate	Moderate	Fresno: Low KCH: Low KCGW: No Potential KCGSE: Low KCGSW: No Potential
<i>Layia heterotricha</i> pale-yellow layia	--	--	List 1B.1	No Potential	No Potential	No Potential	No Potential	No Potential	No Potential	Fresno: No Potential KCH: No Potential KCGW: No Potential KCGSE: No Potential KCGSW: No Potential
<i>Layia leucopappa</i> Comanche Point layia	--	--	List 1B.1	Low	Low	Low	Low	Low	Low	Fresno: Low KCH: Low KCGW: No Potential KCGSE: Low KCGSW: No Potential
<i>Layia munzii</i> Munz's tidy-tips	--	--	List 1B.2	Moderate	Low	Low	Moderate	Moderate	Moderate	Fresno: Moderate KCH: Moderate KCGW: No Potential KCGSE: Low KCGSW: No Potential
<i>Monolopia congdonii</i> San Joaquin woolly threads	E	--	List 1B.2	Moderate	Low	Moderate	Moderate	Moderate	Moderate	Fresno: Moderate KCH: Moderate KCGW: No Potential KCGSE: Low KCGSW: No Potential

**Attachment 1**  
 Special-Status Plant Species with Potential to Occur in the Project Vicinity

Scientific Name Common Name	Federal Status <sup>a</sup>	State Status <sup>b</sup>	CNPS <sup>c</sup>	BNSF Alternative	Corcoran Elevated Alternative	Corcoran Bypass Alternative	Allensworth Bypass Alternative	Wasco-Shafter Bypass Alternative	Bakersfield South Alternative	Heavy Maintenance Facilities <sup>d</sup>
<i>Pseudobahia bahiifolia</i> Hartweg's golden sunburst	E	E	List 1B.1	No Potential	No Potential	No Potential	No Potential	No Potential	No Potential	Fresno: No Potential KCH: No Potential KCGW: No Potential KCGSE: No Potential KCGSW: No Potential
<i>Pseudobahia peirsonii</i> San Joaquin adobe sunburst	T	E	List 1B.1	Low	Low	Low	Low	Low	Low	Fresno: Low KCH: Low KCGW: No Potential KCGSE: Low KCGSW: No Potential
<i>Stylocline citroleum</i> oil neststraw	--	--	List 1B.1	No Potential	No Potential	No Potential	No Potential	No Potential	No Potential	Fresno: No Potential KCH: No Potential KCGW: No Potential KCGSE: No Potential KCGSW: No Potential
<i>Stylocline masonii</i> Mason's neststraw	--	--	List 1B.1	No Potential	No Potential	No Potential	No Potential	No Potential	No Potential	Fresno: No Potential KCH: No Potential KCGW: No Potential KCGSE: No Potential KCGSW: No Potential

**Attachment 1**  
 Special-Status Plant Species with Potential to Occur in the Project Vicinity

Scientific Name Common Name	Federal Status <sup>a</sup>	State Status <sup>b</sup>	CNPS <sup>c</sup>	BNSF Alternative	Corcoran Elevated Alternative	Corcoran Bypass Alternative	Allensworth Bypass Alternative	Wasco-Shafter Bypass Alternative	Bakersfield South Alternative	Heavy Maintenance Facilities <sup>d</sup>
<b>Brassicaceae</b>										
<i>Caulanthus californicus</i> California jewel-flower	E	E	List 1B.1	Moderate	Low	Moderate	Moderate	Moderate	Moderate	Fresno: Moderate KCH: Moderate KCGW: No Potential KCGSE: Low KCGSW: No Potential
<i>Lepidium jaredii</i> ssp. <i>album</i> Panoche pepper-grass	--	--	List 1B.2	Low	Low	Low	Low	Low	Low	Fresno: Low KCH: Low KCGW: No Potential KCGSE: Low KCGSW:
<i>Tropidocarpum californicum</i> king's gold	--	--	List 1B.1	Moderate	Low	Low	Moderate	Moderate	Moderate	Fresno: Moderate KCH: Moderate KCGW: No Potential KCGSE: Low KCGSW: No Potential
<i>Tropidocarpum capparideum</i> caper-fruited tropidocarpum	--	--	List 1B.1	No Potential	No Potential	No Potential	No Potential	No Potential	No Potential	Fresno: No Potential KCH: No Potential KCGW: No Potential KCGSE: No Potential KCGSW: No Potential

**Attachment 1**  
 Special-Status Plant Species with Potential to Occur in the Project Vicinity

Scientific Name Common Name	Federal Status <sup>a</sup>	State Status <sup>b</sup>	CNPS <sup>c</sup>	BNSF Alternative	Corcoran Elevated Alternative	Corcoran Bypass Alternative	Allensworth Bypass Alternative	Wasco-Shafter Bypass Alternative	Bakersfield South Alternative	Heavy Maintenance Facilities <sup>d</sup>
<b>Bryaceae</b>										
<i>Schizymerium shevockii</i> Shevock's copper moss	--	--	List 1B.2	No Potential	No Potential	No Potential	No Potential	No Potential	No Potential	Fresno: No Potential KCH: No Potential KCGW: No Potential KCGSE: No Potential KCGSW: No Potential
<b>Cactaceae</b>										
<i>Opuntia basilaris</i> var. <i>treleasei</i> Bakersfield cactus	E	E	List 1B.1	Low	No Potential	No Potential	No Potential	No Potential	Low	Fresno: Low KCH: Low KCGW: No Potential KCGSE: Low KCGSW: No Potential
<b>Campanulaceae</b>										
<i>Downingia pusilla</i> dwarf downingia	--	--	List 2.2	No Potential	No Potential	No Potential	No Potential	No Potential	No Potential	Fresno: No Potential KCH: No Potential KCGW: No Potential KCGSE: No Potential KCGSW: No Potential
<b>Chenopodiaceae</b>										
<i>Atriplex cordulata</i> heartscale	--	--	List 1B.2	High	Low	Moderate	High	Moderate	Moderate	Fresno: Moderate KCH: Moderate KCGW: No Potential KCGSE: Low KCGSW: No Potential

**Attachment 1**  
 Special-Status Plant Species with Potential to Occur in the Project Vicinity

Scientific Name Common Name	Federal Status <sup>a</sup>	State Status <sup>b</sup>	CNPS <sup>c</sup>	BNSF Alternative	Corcoran Elevated Alternative	Corcoran Bypass Alternative	Allensworth Bypass Alternative	Wasco-Shafter Bypass Alternative	Bakersfield South Alternative	Heavy Maintenance Facilities <sup>d</sup>
<i>Atriplex depressa</i> brittlescale	--	--	List 1B.2	High	Low	Low	High	Moderate	Moderate	Fresno: Moderate KCH: Moderate KCGW: No Potential KCGSE: Low KCGSW: No Potential
<i>Atriplex erecticaulis</i> Earlimart orache	--	--	List 1B.2	Moderate	Low	Moderate	Moderate	Moderate	Moderate	Fresno: Low KCH: Moderate KCGW: No Potential KCGSE: Low KCGSW: No Potential
<i>Atriplex minuscula</i> lesser saltscale	--	--	List 1B.1	High	Low	Moderate	High	Moderate	Moderate	Fresno: Moderate KCH: Moderate KCGW: No Potential KCGSE: Low KCGSW: No Potential
<i>Atriplex persistens</i> vernal pool smallscale	--	--	List 1B.2	Moderate	Low	Low	Moderate	Low	Low	Fresno: Low KCH: Low KCGW: No Potential KCGSE: Low KCGSW: No Potential
<i>Atriplex subtilis</i> subtle orache	--	--	List 1B.2	High	Low	Moderate	High	Moderate	Moderate	Fresno: Moderate KCH: Moderate KCGW: No Potential KCGSE: Low KCGSW: No Potential



**Attachment 1**  
 Special-Status Plant Species with Potential to Occur in the Project Vicinity

Scientific Name Common Name	Federal Status <sup>a</sup>	State Status <sup>b</sup>	CNPS <sup>c</sup>	BNSF Alternative	Corcoran Elevated Alternative	Corcoran Bypass Alternative	Allensworth Bypass Alternative	Wasco-Shafter Bypass Alternative	Bakersfield South Alternative	Heavy Maintenance Facilities <sup>d</sup>
<i>Atriplex tularensis</i> Bakersfield smallscale	--	E	List 1B.1	Moderate	Low	Low	Moderate	Moderate	Moderate	Fresno: Moderate KCH: Moderate KCGW: No Potential KCGSE: Low KCGSW: No Potential
<i>Atriplex vallicola</i> Lost Hills crownscale	--	--	List 1B.2	High	Low	Moderate	High	Moderate	Moderate	Fresno: Moderate KCH: Moderate KCGW: No Potential KCGSE: Low KCGSW: No Potential
<b>Euphorbiaceae</b>										
<i>Chamaesyce hooveri</i> Hoover's spurge	T	--	List 1B.2	Moderate	Low	Low	Moderate	Low	Low	Fresno: Low KCH: Moderate KCGW: No Potential KCGSE: Low KCGSW: No Potential
<i>Chamaesyce hooveri</i> Hoover's spurge *Critical Habitat*	D	--	--	No Potential	No Potential	No Potential	No Potential	No Potential	No Potential	Fresno: No Potential KCH: No Potential KCGW: No Potential KCGSE: No Potential KCGSW: No Potential

**Attachment 1**  
 Special-Status Plant Species with Potential to Occur in the Project Vicinity

Scientific Name Common Name	Federal Status <sup>a</sup>	State Status <sup>b</sup>	CNPS <sup>c</sup>	BNSF Alternative	Corcoran Elevated Alternative	Corcoran Bypass Alternative	Allensworth Bypass Alternative	Wasco-Shafter Bypass Alternative	Bakersfield South Alternative	Heavy Maintenance Facilities <sup>d</sup>
<b>Fabaceae</b>										
<i>Astragalus hornii</i> var. <i>hornii</i> Horn's milk-vetch	--	--	List 1B.1	Moderate	Low	Low	Moderate	Moderate	Moderate	Fresno: Moderate KCH: Moderate KCGW: No Potential KCGSE: Low KCGSW: No Potential
<b>Geraniaceae</b>										
<i>California macrophylla</i> round-leaved filaree	--	--	List 1B.1	Moderate	Low	Moderate	Moderate	Moderate	Moderate	Fresno: Moderate KCH: Moderate KCGW: No Potential KCGSE: Low KCGSW: No Potential
<b>Lamiaceae</b>										
<i>Monardella linoides</i> ssp. <i>oblonga</i> flaxleaf monardella	--	--	List 1B.3	No Potential	No Potential	No Potential	No Potential	No Potential	No Potential	Fresno: No Potential KCH: No Potential KCGW: No Potential KCGSE: No Potential KCGSW: No Potential
<b>Liliaceae</b>										
<i>Calochortus striatus</i> alkali mariposa-lily	--	--	List 1B.2	Moderate	Low	Moderate	Moderate	Moderate	Moderate	Fresno: Moderate KCH: Moderate KCGW: No Potential KCGSE: Low KCGSW: No Potential

**Attachment 1**  
 Special-Status Plant Species with Potential to Occur in the Project Vicinity

Scientific Name Common Name	Federal Status <sup>a</sup>	State Status <sup>b</sup>	CNPS <sup>c</sup>	BNSF Alternative	Corcoran Elevated Alternative	Corcoran Bypass Alternative	Allensworth Bypass Alternative	Wasco-Shafter Bypass Alternative	Bakersfield South Alternative	Heavy Maintenance Facilities <sup>d</sup>
<i>Fritillaria brandegeei</i> greenhorn fritillary	--	--	List 1B.3	No Potential	No Potential	No Potential	No Potential	No Potential	No Potential	Fresno: No Potential KCH: No Potential KCGW: No Potential KCGSE: No Potential KCGSW: No Potential
<i>Fritillaria striata</i> striped adobe-lily	--	T	List 1B.1	Low	Low	Low	Low	Low	Low	Fresno: Low KCH: Low KCGW: No Potential KCGSE: Low KCGSW: No Potential
<b>Malvaceae</b>										
<i>Eremalche kernensis</i> Kern mallow	E	--	List 1B.1	Low	Low	Low	Low	Low	Low	Fresno: Low KCH: Low KCGW: No Potential KCGSE: Low KCGSW: No Potential
<b>Onagraceae</b>										
<i>Clarkia tembloriensis</i> ssp. <i>calientensis</i> (Vasek's clarkia)	--	--	List 1B.1	No Potential	No Potential	No Potential	No Potential	No Potential	No Potential	Fresno: No Potential KCH: No Potential KCGW: No Potential KCGSE: No Potential KCGSW: No Potential

**Attachment 1**  
 Special-Status Plant Species with Potential to Occur in the Project Vicinity

Scientific Name Common Name	Federal Status <sup>a</sup>	State Status <sup>b</sup>	CNPS <sup>c</sup>	BNSF Alternative	Corcoran Elevated Alternative	Corcoran Bypass Alternative	Allensworth Bypass Alternative	Wasco-Shafter Bypass Alternative	Bakersfield South Alternative	Heavy Maintenance Facilities <sup>d</sup>
<b>Papaveraceae</b>										
<i>Eschscholzia lemmonii</i> ssp. <i>kernensis</i> Tejon poppy	--	--	List 1B.1	No Potential	No Potential	No Potential	No Potential	No Potential	No Potential	Fresno: No Potential KCH: No Potential KCGW: No Potential KCGSE: No Potential KCGSW: No Potential
<b>Poaceae</b>										
<i>Imperata brevifolia</i> California satintail	--	--	List 2.1	Moderate	Low	Low	Moderate	Moderate	Moderate	Fresno: Moderate KCH: Moderate KCGW: No Potential KCGSE: Low KCGSW: No Potential
<i>Orcuttia inaequalis</i> San Joaquin Valley Orcutt grass	T/C	E	List 1B.1	Low	Low	Low	Low	Low	Low	Fresno: Low KCH: Low KCGW: No Potential KCGSE: Low KCGSW: No Potential
<i>Orcuttia inaequalis</i> San Joaquin Valley Orcutt grass *Critical Habitat*	D	--	--	No Potential	No Potential	No Potential	No Potential	No Potential	No Potential	Fresno: No Potential KCH: No Potential KCGW: No Potential KCGSE: No Potential KCGSW: No Potential

**Attachment 1**  
 Special-Status Plant Species with Potential to Occur in the Project Vicinity

Scientific Name Common Name	Federal Status <sup>a</sup>	State Status <sup>b</sup>	CNPS <sup>c</sup>	BNSF Alternative	Corcoran Elevated Alternative	Corcoran Bypass Alternative	Allensworth Bypass Alternative	Wasco-Shafter Bypass Alternative	Bakersfield South Alternative	Heavy Maintenance Facilities <sup>d</sup>
<i>Orcuttia pilosa</i> Hairy Orcutt grass	E/C	E	List 1B.1	No Potential	No Potential	No Potential	No Potential	No Potential	No Potential	Fresno: No Potential KCH: No Potential KCGW: No Potential KCGSE: No Potential KCGSW: No Potential
<i>Orcuttia pilosa</i> Hairy Orcutt grass *Critical Habitat*	D	--	--	No Potential	No Potential	No Potential	No Potential	No Potential	No Potential	Fresno: No Potential KCH: No Potential KCGW: No Potential KCGSE: No Potential KCGSW: No Potential
<i>Tuctoria greenei</i> Greene's tuctoria	E/C	R	List 1B.1	Low	Low	Low	Low	Low	Low	Fresno: Low KCH: Low KCGW: No Potential KCGSE: Low KCGSW: No Potential
<i>Tuctoria greenei</i> Greene's tuctoria *Critical Habitat*	D	--	--	No Potential	No Potential	No Potential	No Potential	No Potential	No Potential	Fresno: No Potential KCH: No Potential KCGW: No Potential KCGSE: No Potential KCGSW: No Potential

**Attachment 1**  
 Special-Status Plant Species with Potential to Occur in the Project Vicinity

Scientific Name Common Name	Federal Status <sup>a</sup>	State Status <sup>b</sup>	CNPS <sup>c</sup>	BNSF Alternative	Corcoran Elevated Alternative	Corcoran Bypass Alternative	Allensworth Bypass Alternative	Wasco-Shafter Bypass Alternative	Bakersfield South Alternative	Heavy Maintenance Facilities <sup>d</sup>
<b>Polemoniaceae</b>										
<i>Eriastrum hooveri</i> Hoover's woolly-star	DL	--	List 4.2	Moderate	Low	Low	Moderate	Moderate	Moderate	Fresno: Moderate KCH: Moderate KCGW: No Potential KCGSE: Low KCGSW: No Potential
<i>Leptosiphon serrulatus</i> Madera leptosiphon	--	--	List 1B.2	No Potential	No Potential	No Potential	No Potential	No Potential	No Potential	Fresno: No Potential KCH: No Potential KCGW: No Potential KCGSE: No Potential KCGSW: No Potential
<i>Navarretia setiloba</i> Piute Mountains navarretia	--	--	List 1B.1	No Potential	No Potential	No Potential	No Potential	No Potential	No Potential	Fresno: No Potential KCH: No Potential KCGW: No Potential KCGSE: No Potential KCGSW: No Potential
<b>Polygonaceae</b>										
<i>Eriogonum nortonii</i> Pinnacles buckwheat	--	--	List 1B.3	No Potential	No Potential	No Potential	No Potential	No Potential	No Potential	Fresno: No Potential KCH: No Potential KCGW: No Potential KCGSE: No Potential KCGSW: No Potential

**Attachment 1**  
 Special-Status Plant Species with Potential to Occur in the Project Vicinity

Scientific Name Common Name	Federal Status <sup>a</sup>	State Status <sup>b</sup>	CNPS <sup>c</sup>	BNSF Alternative	Corcoran Elevated Alternative	Corcoran Bypass Alternative	Allensworth Bypass Alternative	Wasco-Shafter Bypass Alternative	Bakersfield South Alternative	Heavy Maintenance Facilities <sup>d</sup>
<b>Pottiaceae</b>										
<i>Pterygoneurum californicum</i> California chalk moss	--	--	List 1B.1	No Potential	No Potential	No Potential	No Potential	No Potential	No Potential	Fresno: No Potential KCH: No Potential KCGW: No Potential KCGSE: No Potential KCGSW: No Potential
<i>Tortula californica</i> California screw moss	--	--	List 1B.2	No Potential	No Potential	No Potential	No Potential	No Potential	No Potential	Fresno: No Potential KCH: No Potential KCGW: No Potential KCGSE: No Potential KCGSW: No Potential
<b>Ranunculaceae</b>										
<i>Delphinium purpusii</i> rose-flowered larkspur	--	--	List 1B.3	No Potential	No Potential	No Potential	No Potential	No Potential	No Potential	Fresno: No Potential KCH: No Potential KCGW: No Potential KCGSE: No Potential KCGSW: No Potential
<i>Delphinium recurvatum</i> recurved larkspur	--	--	List 1B.2	High	Low	Moderate	High	Moderate	Moderate	Fresno: Moderate KCH: Moderate KCGW: No Potential KCGSE: Low KCGSW: No Potential

**Attachment 1**  
 Special-Status Plant Species with Potential to Occur in the Project Vicinity

Scientific Name Common Name	Federal Status <sup>a</sup>	State Status <sup>b</sup>	CNPS <sup>c</sup>	BNSF Alternative	Corcoran Elevated Alternative	Corcoran Bypass Alternative	Allensworth Bypass Alternative	Wasco-Shafter Bypass Alternative	Bakersfield South Alternative	Heavy Maintenance Facilities <sup>d</sup>
<i>Myosurus minimus</i> ssp. <i>apus</i> little mousetail	--	--	List 3.1	High	Low	Moderate	High	Moderate	Moderate	Fresno: Moderate KCH: Moderate KCGW: No Potential KCGSE: Low KCGSW: No Potential
<b>Scrophulariaceae</b>										
<i>Castilleja campestris</i> ssp. <i>succulenta</i> succulent owl's-clover	T	E	List 1B.2	No Potential	No Potential	No Potential	No Potential	No Potential	No Potential	Fresno: No Potential KCH: No Potential KCGW: No Potential KCGSE: No Potential KCGSW: No Potential
<i>Castilleja campestris</i> ssp. <i>succulenta</i> succulent owl's-clover *Critical Habitat*	D	--	--	No Potential	No Potential	No Potential	No Potential	No Potential	No Potential	Fresno: No Potential KCH: No Potential KCGW: No Potential KCGSE: No Potential KCGSW: No Potential
<i>Mimulus acutidens</i> Kings River monkeyflower	--	--	List 3	No Potential	No Potential	No Potential	No Potential	No Potential	No Potential	Fresno: No Potential KCH: No Potential KCGW: No Potential KCGSE: No Potential KCGSW: No Potential
<i>Mimulus pictus</i> calico monkeyflower	--	--	List 1B.2	No Potential	No Potential	No Potential	No Potential	No Potential	No Potential	Fresno: No Potential KCH: No Potential KCGW: No Potential KCGSE: No Potential KCGSW: No Potential



**Attachment 1**  
 Special-Status Plant Species with Potential to Occur in the Project Vicinity

Scientific Name Common Name	Federal Status <sup>a</sup>	State Status <sup>b</sup>	CNPS <sup>c</sup>	BNSF Alternative	Corcoran Elevated Alternative	Corcoran Bypass Alternative	Allensworth Bypass Alternative	Wasco-Shafter Bypass Alternative	Bakersfield South Alternative	Heavy Maintenance Facilities <sup>d</sup>
<b>Violaceae</b>										
<i>Viola pinetorum</i> ssp. <i>grisea</i> goosefoot yellow violet	--	--	List 1B.3	No Potential	No Potential	No Potential	No Potential	No Potential	No Potential	Fresno: No Potential KCH: No Potential KCGW: No Potential KCGSE: No Potential KCGSW: No Potential
<p>Notes:</p> <p>Potential to Occur Designations</p> <p>No Potential: Outside of historic range OR Habitat absent from study area</p> <p>Low Potential: Inside of present range and low or marginal quality habitat present within the study area.</p> <p>Moderate Potential: Within present range and suitable habitat present within the habitat study area</p> <p>High Potential: Observed within habitat study area OR Recorded in the vicinity with supporting habitat present in habitat study area.</p> <p><sup>d</sup> Heavy Maintenance Facility (HMF) Alternatives:</p> <p>Fresno: Fresno HMF</p> <p>KCH: Kings County Economic Development Corporation HMF</p> <p>KCGW: Kern Council of Governments-Wasco HMF</p> <p>KCGSE: Kern Council of Governments – Shafter East HMF</p> <p>KCGSE: Kern Council of Governments – Shafter West HMF</p> <p><sup>d</sup> Source: USFWS (2005), and USFWS (1998a), BCC = Birds of Conservation Concern (USFWS 2008), BGEPA = Bald and Golden Eagle Protection Act of 1999.</p> <p>-- = No status designation.</p> <p><sup>a</sup> Federal status:</p> <p>E (Endangered) = Listed as endangered under the Federal ESA.</p>						<p>T (Threatened) = Listed as threatened under the Federal ESA.</p> <p>DL (Delisted) = Delisted from the Federal ESA.</p> <p>D (Designated) = Critical Habitat designated under the Federal ESA</p> <p><sup>b</sup> State status:</p> <p>E (Endangered) = Listed as endangered under the CESA.</p> <p>T (Threatened) = Listed as threatened under the CESA.</p> <p>R (Rare) = Listed as rare under the CESA.</p> <p>CNPS</p> <p>LIST 1A = Presumed extinct in California.</p> <p>LIST 1B = Rare, threatened, or endangered in California and elsewhere.</p> <p>LIST 2 = Rare, threatened, or endangered in California, but more common elsewhere.</p> <p>LIST 3 = More information about this plant (Review List).</p> <p>LIST 4 = Plants of limited distribution (Watch List).</p> <p>.1 = Seriously endangered in California; .2 = Fairly endangered in California; .3 = Not very endangered in California</p> <p><sup>c</sup> Source: CNPS (2010) and USFWS (1998).</p>				

*This page intentionally left blank*

**Attachment 2**  
 Special-Status Wildlife Species with Potential to Occur in the Project Vicinity

Scientific Name Common Name	Federal Status <sup>b</sup>	State Status <sup>c</sup>	Potential to Occur <sup>a</sup>						
			BNSF Alternative	Corcoran Elevated Alternative	Corcoran Bypass Alternative	Allensworth Bypass Alternative	Wasco-Shafter Bypass Alternative	Bakersfield South Alternative	Heavy Maintenance Facilities <sup>d</sup>
<b>Invertebrates</b>									
<i>Branchinecta conservatio</i> CONSERVANCY FAIRY SHRIMP	E	--	No Potential	No Potential	No Potential	No Potential	No Potential	No Potential	Fresno: No Potential KCH: No Potential KCGW: No Potential KCGSE: No Potential KCGSW: No Potential
<i>Branchinecta lynchi</i> VERNAL POOL FAIRY SHRIMP	T	--	High	Low	Moderate	High	Low	Moderate	Fresno: Moderate KCH: No Potential KCGW: No Potential KCGSE: No Potential KCGSW: No Potential
<i>Branchinecta lynchi</i> VERNAL POOL FAIRY SHRIMP *CRITICAL HABITAT*	D	--	High	No Potential	No Potential	No Potential	No Potential	No Potential	Fresno: No Potential KCH: No Potential KCGW: No Potential KCGSE: No Potential KCGSW: No Potential
<i>Desmocerus californicus dimorphus</i> VALLEY ELDERBERRY LONGHORN BEETLE	T	--	Moderate	Low	Moderate	Moderate	Moderate	Moderate	Fresno: No Potential KCH: No Potential KCGW: No Potential KCGSE: No Potential KCGSW: No Potential

**Attachment 2**  
 Special-Status Wildlife Species with Potential to Occur in the Project Vicinity

Scientific Name Common Name	Federal Status <sup>b</sup>	State Status <sup>c</sup>	Potential to Occur <sup>a</sup>						
			BNSF Alternative	Corcoran Elevated Alternative	Corcoran Bypass Alternative	Allensworth Bypass Alternative	Wasco-Shafter Bypass Alternative	Bakersfield South Alternative	Heavy Maintenance Facilities <sup>d</sup>
<i>Lepidurus packardii</i> VERNAL POOL TADPOLE SHRIMP	E	--	High	Low	Moderate	High	Low	Moderate	Fresno: Moderate KCH: No Potential KCGW: No Potential KCGSE: No Potential KCGSW: No Potential
<i>Lepidurus packardii</i> VERNAL POOL TADPOLE SHRIMP *CRITICAL HABITAT*	D	--	No Potential	No Potential	No Potential	No Potential	No Potential	No Potential	Fresno: No Potential KCH: No Potential KCGW: No Potential KCGSE: No Potential KCGSW: No Potential
<b>Fish</b>									
<i>Archoplites interruptus</i> SACRAMENTO PERCH	--	SSC	No Potential	No Potential	No Potential	No Potential	No Potential	No Potential	Fresno: No Potential KCH: No Potential KCGW: No Potential KCGSE: No Potential KCGSW: No Potential
<i>Hypomesus transpacificus</i> DELTA SMELT	T	T	No Potential	No Potential	No Potential	No Potential	No Potential	No Potential	Fresno: No Potential KCH: No Potential KCGW: No Potential KCGSE: No Potential KCGSW: No Potential

**Attachment 2**  
 Special-Status Wildlife Species with Potential to Occur in the Project Vicinity

Scientific Name Common Name	Federal Status <sup>b</sup>	State Status <sup>c</sup>	Potential to Occur <sup>a</sup>							
			BNSF Alternative	Corcoran Elevated Alternative	Corcoran Bypass Alternative	Allensworth Bypass Alternative	Wasco-Shafter Bypass Alternative	Bakersfield South Alternative	Heavy Maintenance Facilities <sup>d</sup>	
<i>Lampetra hubbsi</i> KERN BROOK LAMPREY	--	SSC	Low	No Potential	No Potential	No Potential	No Potential	No Potential	Low	Fresno: No Potential KCH: No Potential KCGW: No Potential KCGSE: No Potential KCGSW: No Potential
<i>Lampetra ayresi</i> RIVER LAMPREY	--	SSC	No Potential	No Potential	No Potential	No Potential	No Potential	No Potential	No Potential	Fresno: No Potential KCH: No Potential KCGW: No Potential KCGSE: No Potential KCGSW: No Potential
<i>Lavinia symmetricus symmetricus</i> SAN JOAQUIN ROACH	--	SSC	No Potential	No Potential	No Potential	No Potential	No Potential	No Potential	No Potential	Fresno: No Potential KCH: No Potential KCGW: No Potential KCGSE: No Potential KCGSW: No Potential
<i>Mylopharodon conocephalus</i> HARDHEAD	--	SSC	No Potential	No Potential	No Potential	No Potential	No Potential	No Potential	No Potential	Fresno: No Potential KCH: No Potential KCGW: No Potential KCGSE: No Potential KCGSW: No Potential

**Attachment 2**  
 Special-Status Wildlife Species with Potential to Occur in the Project Vicinity

			Potential to Occur <sup>a</sup>						
Scientific Name Common Name	Federal Status <sup>b</sup>	State Status <sup>c</sup>	BNSF Alternative	Corcoran Elevated Alternative	Corcoran Bypass Alternative	Allensworth Bypass Alternative	Wasco-Shafter Bypass Alternative	Bakersfield South Alternative	Heavy Maintenance Facilities <sup>d</sup>
<i>Oncorhynchus mykiss</i> CENTRAL VALLEY STEELHEAD	T	--	No Potential	No Potential	No Potential	No Potential	No Potential	No Potential	Fresno: No Potential KCH: No Potential KCGW: No Potential KCGSE: No Potential KCGSW: No Potential
<b>Amphibians</b>									
<i>Ambystoma californiense</i> CALIFORNIA TIGER SALAMANDER	T	T/SSC	Low	Low	Moderate	No Potential	No Potential	No Potential	Fresno: Low KCH: Low KCGW: No Potential KCGSE: No Potential KCGSW: No Potential
<i>Ambystoma californiense</i> CALIFORNIA TIGER SALAMANDER *CRITICAL HABITAT*	D	--	No Potential	No Potential	No Potential	No Potential	No Potential	No Potential	Fresno: No Potential KCH: No Potential KCGW: No Potential KCGSE: No Potential KCGSW: No Potential
<i>Batrachoseps simatus</i> KERN CANYON SLENDER SALAMANDER	--	T	No Potential	No Potential	No Potential	No Potential	No Potential	No Potential	Fresno: No Potential KCH: No Potential KCGW: No Potential KCGSE: No Potential KCGSW: No Potential

**Attachment 2**  
 Special-Status Wildlife Species with Potential to Occur in the Project Vicinity

Scientific Name Common Name	Federal Status <sup>b</sup>	State Status <sup>c</sup>	Potential to Occur <sup>a</sup>						
			BNSF Alternative	Corcoran Elevated Alternative	Corcoran Bypass Alternative	Allensworth Bypass Alternative	Wasco-Shafter Bypass Alternative	Bakersfield South Alternative	Heavy Maintenance Facilities <sup>d</sup>
<i>Batrachoseps stebbinsi</i> TEHACHAPI SLENDER SALAMANDER	C	T	No Potential	No Potential	No Potential	No Potential	No Potential	No Potential	Fresno: No Potential KCH: No Potential KCGW: No Potential KCGSE: No Potential KCGSW: No Potential
<i>Ensatina eschscholtzii croceator</i> YELLOW-BLOTCHED SALAMANDER	--	SSC	No Potential	No Potential	No Potential	No Potential	No Potential	No Potential	Fresno: No Potential KCH: No Potential KCGW: No Potential KCGSE: No Potential KCGSW: No Potential
<i>Lithobates (=Rana) pipiens</i> NORTHERN LEOPARD FROG *LIMITED TO* NATIVE POPULATIONS ONLY	C	SSC	No Potential	No Potential	No Potential	No Potential	No Potential	No Potential	Fresno: No Potential KCH: No Potential KCGW: No Potential KCGSE: No Potential KCGSW: No Potential
<i>Rana boylei</i> FOOTHILL YELLOW-LEGGED FROG	--	SSC	No Potential	No Potential	No Potential	No Potential	No Potential	No Potential	Fresno: No Potential KCH: No Potential KCGW: No Potential KCGSE: No Potential KCGSW: No Potential

**Attachment 2**  
 Special-Status Wildlife Species with Potential to Occur in the Project Vicinity

			Potential to Occur <sup>a</sup>						
Scientific Name Common Name	Federal Status <sup>b</sup>	State Status <sup>c</sup>	BNSF Alternative	Corcoran Elevated Alternative	Corcoran Bypass Alternative	Allensworth Bypass Alternative	Wasco-Shafter Bypass Alternative	Bakersfield South Alternative	Heavy Maintenance Facilities <sup>d</sup>
<i>Rana draytonii</i> ( <i>Rana aurora draytonii</i> ) CALIFORNIA RED-LEGGED FROG	T	SSC	No Potential	No Potential	No Potential	No Potential	No Potential	No Potential	Fresno: No Potential KCH: No Potential KCGW: No Potential KCGSE: No Potential KCGSW: No Potential
<i>Spea</i> (= <i>Scaphiopus</i> ) <i>hammondii</i> WESTERN SPADEFOOT	--	SSC	High	Moderate	Moderate	High	Moderate	Moderate	Fresno: Moderate KCH: Moderate KCGW: Low KCGSE: Moderate KCGSW: Low
<b>Reptiles</b>									
<i>Actinemys</i> (= <i>Clemmys</i> / <i>Emys</i> ) <i>marmorata</i> WESTERN POND TURTLE	--	SSC	Moderate <sup>f</sup>	Moderate <sup>f</sup>	Moderate <sup>f</sup>	Moderate <sup>f</sup>	Moderate <sup>f</sup>	Moderate <sup>f</sup>	Fresno: Low <sup>f</sup> KCH: Low <sup>f</sup> KCGW: Low <sup>f</sup> KCGSE: Low <sup>f</sup> KCGSW: Low <sup>f</sup>
<i>Anniella pulchra pulchra</i> SILVERY LEGLESS LIZARD	--	SSC	Moderate	Low	Moderate	Moderate	Low	Moderate	Fresno: Low KCH: Low KCGW: Low KCGSE: Low KCGSW: Low



**Attachment 2**  
 Special-Status Wildlife Species with Potential to Occur in the Project Vicinity

Scientific Name Common Name	Federal Status <sup>b</sup>	State Status <sup>c</sup>	Potential to Occur <sup>a</sup>							Heavy Maintenance Facilities <sup>d</sup>
			BNSF Alternative	Corcoran Elevated Alternative	Corcoran Bypass Alternative	Allensworth Bypass Alternative	Wasco-Shafter Bypass Alternative	Bakersfield South Alternative		
<i>Gambelia</i> (= <i>Crotaphytus</i> ) <i>silae</i> BLUNT-NOSED LEOPARD LIZARD	E	E/FP	High	No Potential	No Potential	High	Moderate	No Potential	Fresno: No Potential KCH: No Potential KCGW: Low KCGSE: Moderate KCGSW: Low	
<i>Masticophis flagellum</i> <i>ruddocki</i> SAN JOAQUIN WHIPSNAKE	--	SSC	Moderate	No Potential	No Potential	No Potential	No Potential	Moderate	Fresno: No Potential KCH: No Potential KCGW: No Potential KCGSE: No Potential KCGSW: No Potential	
<i>Phrynosoma coronatum</i> <i>frontale</i> COAST (CALIFORNIA) HORNED LIZARD	--	SSC	High	Low <sup>e</sup>	Moderate <sup>e</sup>	High <sup>e</sup>	No Potential	Moderate	Fresno: No Potential KCH: No Potential KCGW: No Potential KCGSE: No Potential KCGSW: No Potential	
<i>Salvadora hexalepis</i> <i>virgulata</i> COAST (WESTERN) PATCH-NOSED SNAKE	--	SSC	No Potential	No Potential	No Potential	No Potential	No Potential	No Potential	Fresno: No Potential KCH: No Potential KCGW: No Potential KCGSE: No Potential KCGSW: No Potential	

**Attachment 2**  
 Special-Status Wildlife Species with Potential to Occur in the Project Vicinity

			Potential to Occur <sup>a</sup>						
Scientific Name Common Name	Federal Status <sup>b</sup>	State Status <sup>c</sup>	BNSF Alternative	Corcoran Elevated Alternative	Corcoran Bypass Alternative	Allensworth Bypass Alternative	Wasco-Shafter Bypass Alternative	Bakersfield South Alternative	Heavy Maintenance Facilities <sup>d</sup>
<i>Thamnophis gigas</i> GIANT GARTER SNAKE	T	T	No Potential	No Potential	No Potential	No Potential	No Potential	No Potential	Fresno: No Potential KCH: No Potential KCGW: No Potential KCGSE: No Potential KCGSW: No Potential
<b>Birds</b>									
<i>Agelaius tricolor</i> TRICOLORED BLACKBIRD	--	SSC	High	Moderate	Moderate	Moderate	Moderate	Moderate	Fresno: Moderate KCH: Moderate KCGW: Moderate KCGSE: Moderate KCGSW: Moderate
<i>Ammodramus savannarum</i> GRASSHOPPER SPARROW	--	SSC	Low	Low	Low	Low	Low	Low	Fresno: Low KCH: Low KCGW: Low KCGSE: Low KCGSW: Low
<i>Aphelocoma insularis</i> ISLAND SCRUB-JAY	BCC	--	No Potential	No Potential	No Potential	No Potential	No Potential	No Potential	Fresno: No Potential KCH: No Potential KCGW: No Potential KCGSE: No Potential KCGSW: No Potential

**Attachment 2**  
 Special-Status Wildlife Species with Potential to Occur in the Project Vicinity

			Potential to Occur <sup>a</sup>							
Scientific Name Common Name	Federal Status <sup>b</sup>	State Status <sup>c</sup>	BNSF Alternative	Corcoran Elevated Alternative	Corcoran Bypass Alternative	Allensworth Bypass Alternative	Wasco-Shafter Bypass Alternative	Bakersfield South Alternative	Heavy Maintenance Facilities <sup>d</sup>	
<i>Aquila chrysaetos</i> GOLDEN EAGLE	--	FP	Moderate	Low	Moderate	Moderate	Moderate	Moderate	Fresno: Moderate KCH: Moderate KCGW: Moderate KCGSE: Moderate KCGSW: Moderate	
<i>Asio flammeus</i> SHORT-EARED OWL	--	SSC	Low	No Potential	No Potential	Low	No Potential	No Potential	Fresno: No Potential KCH: No Potential KCGW: No Potential KCGSE: No Potential KCGSW: No Potential	
<i>Asio otus</i> LONG-EARED OWL	--	SSC	Low	Low	Low	Low	Low	Low	Fresno: Low KCH: Low KCGW: Low KCGSE: Low KCGSW: Low	
<i>Athene cunicularia</i> WESTERN BURROWING OWL	--	SSC	High	High	High	High	High	High	Fresno: High KCH: High KCGW: High KCGSE: High KCGSW: High	

**Attachment 2**  
 Special-Status Wildlife Species with Potential to Occur in the Project Vicinity

			Potential to Occur <sup>a</sup>						
Scientific Name Common Name	Federal Status <sup>b</sup>	State Status <sup>c</sup>	BNSF Alternative	Corcoran Elevated Alternative	Corcoran Bypass Alternative	Allensworth Bypass Alternative	Wasco-Shafter Bypass Alternative	Bakersfield South Alternative	Heavy Maintenance Facilities <sup>d</sup>
<i>Aythya americana</i> REDHEAD	--	SSC	High	Moderate	High	Moderate	Low	Low	Fresno: Low KCH: Low KCGW: Low KCGSE: Low KCGSW: Low
<i>Baeolophus inornatus</i> OAK TITMOUSE	BCC	--	Moderate	Moderate	Moderate	Moderate	Moderate	Moderate	Fresno: Moderate KCH: Moderate KCGW: Moderate KCGSE: Moderate KCGSW: Moderate
<i>Buteo swainsoni</i> SWAINSON'S HAWK	--	T	High	Moderate	High	Moderate	Moderate	Moderate	Fresno: Moderate KCH: Moderate KCGW: Moderate KCGSE: Moderate KCGSW: Moderate
<i>Calidris canutus</i> RED KNOT (ROSELAARI SSP.)	BCC	--	No Potential	No Potential	No Potential	No Potential	No Potential	No Potential	Fresno: No Potential KCH: No Potential KCGW: No Potential KCGSE: No Potential KCGSW: No Potential
<i>Calypte costae</i> COSTA'S HUMMINGBIRD	BCC	--	No Potential	No Potential	No Potential	No Potential	No Potential	No Potential	Fresno: No Potential KCH: No Potential KCGW: No Potential KCGSE: No Potential KCGSW: No Potential

**Attachment 2**  
 Special-Status Wildlife Species with Potential to Occur in the Project Vicinity

Scientific Name Common Name	Federal Status <sup>b</sup>	State Status <sup>c</sup>	Potential to Occur <sup>a</sup>						
			BNSF Alternative	Corcoran Elevated Alternative	Corcoran Bypass Alternative	Allensworth Bypass Alternative	Wasco-Shafter Bypass Alternative	Bakersfield South Alternative	Heavy Maintenance Facilities <sup>d</sup>
<i>Campylorhynchus brunneicapillus</i> CACTUS WREN	BCC	--	No Potential	No Potential	No Potential	No Potential	No Potential	No Potential	Fresno: No Potential KCH: No Potential KCGW: No Potential KCGSE: No Potential KCGSW: No Potential
<i>Carduelis lawrencei</i> LAWRENCE'S GOLDFINCH	BCC	--	No Potential	No Potential	No Potential	No Potential	No Potential	No Potential	Fresno: No Potential KCH: No Potential KCGW: No Potential KCGSE: No Potential KCGSW: No Potential
<i>Charadrius alexandrinus nivosus</i> WESTERN SNOWY PLOVER *INLAND POPULATION*	--	SSC	Moderate	Low	Moderate	Moderate	Moderate	No Potential	Fresno: No Potential KCH: No Potential KCGW: Moderate KCGSE: Moderate KCGSW: Low
<i>Charadrius montanus</i> MOUNTAIN PLOVER	--	SSC	Moderate	No Potential	No Potential	Moderate	Low	Moderate	Fresno: No Potential KCH: No Potential KCGW: Low KCGSE: Low KCGSW: Low

**Attachment 2**  
 Special-Status Wildlife Species with Potential to Occur in the Project Vicinity

			Potential to Occur <sup>a</sup>							
Scientific Name Common Name	Federal Status <sup>b</sup>	State Status <sup>c</sup>	BNSF Alternative	Corcoran Elevated Alternative	Corcoran Bypass Alternative	Allensworth Bypass Alternative	Wasco-Shafter Bypass Alternative	Bakersfield South Alternative	Heavy Maintenance Facilities <sup>d</sup>	
<i>Chlidonias niger</i> BLACK TERN	--	SSC	Moderate	No Potential	No Potential	Moderate	Moderate	Moderate	Fresno: No Potential KCH: No Potential KCGW: Moderate KCGSE: Moderate KCGSW: Moderate	
<i>Circus cyaneus</i> NORTHERN HARRIER	--	SSC	Moderate	Moderate	Moderate	Moderate	Moderate	Moderate	Fresno: Moderate KCH: Moderate KCGW: Moderate KCGSE: Moderate KCGSW: Moderate	
<i>Coccyzus americanus occidentalis</i> WESTERN YELLOW-BILLED CUCKOO	C	E	No Potential	No Potential	No Potential	No Potential	No Potential	No Potential	Fresno: No Potential KCH: No Potential KCGW: No Potential KCGSE: No Potential KCGSW: No Potential	
<i>Coturnicops noveboracensis</i> YELLOW RAIL	BCC	SSC	Moderate	No Potential	No Potential	Moderate	No Potential	No Potential	Fresno: No Potential KCH: No Potential KCGW: No Potential KCGSE: No Potential KCGSW: No Potential	
<i>Cypseloides niger</i> BLACK SWIFT	--	SSC	No Potential	No Potential	No Potential	No Potential	No Potential	No Potential	Fresno: No Potential KCH: No Potential KCGW: No Potential KCGSE: No Potential KCGSW: No Potential	

**Attachment 2**  
 Special-Status Wildlife Species with Potential to Occur in the Project Vicinity

Scientific Name Common Name	Federal Status <sup>b</sup>	State Status <sup>c</sup>	Potential to Occur <sup>a</sup>						Heavy Maintenance Facilities <sup>d</sup>
			BNSF Alternative	Corcoran Elevated Alternative	Corcoran Bypass Alternative	Allensworth Bypass Alternative	Wasco-Shafter Bypass Alternative	Bakersfield South Alternative	
<i>Dendragapus fuliginosus howardi</i> MOUNT PINOS SOOTY GROUSE	--	SSC	No Potential	No Potential	No Potential	No Potential	No Potential	No Potential	Fresno: No Potential KCH: No Potential KCGW: No Potential KCGSE: No Potential KCGSW: No Potential
<i>Dendrocygna bicolor</i> FULVOUS WHISTLING-DUCK	--	SSC	Moderate	Low	Low	Moderate	Low	Moderate	Fresno: No Potential KCH: No Potential KCGW: No Potential KCGSE: No Potential KCGSW: No Potential
<i>Dendroica petechia brewsteri</i> YELLOW WARBLER	--	SSC	Moderate	Low	Low	Low	Low	Moderate	Fresno: Low KCH: Low KCGW: Low KCGSE: Low KCGSW: Low
<i>Elanus leucurus</i> WHITE-TAILED KITE	--	FP	Moderate	Moderate	Moderate	Moderate	Moderate	Moderate	Fresno: Moderate KCH: Moderate KCGW: Moderate KCGSE: Moderate KCGSW: Moderate

**Attachment 2**  
 Special-Status Wildlife Species with Potential to Occur in the Project Vicinity

Scientific Name Common Name	Federal Status <sup>b</sup>	State Status <sup>c</sup>	Potential to Occur <sup>a</sup>						Heavy Maintenance Facilities <sup>d</sup>
			BNSF Alternative	Corcoran Elevated Alternative	Corcoran Bypass Alternative	Allensworth Bypass Alternative	Wasco-Shafter Bypass Alternative	Bakersfield South Alternative	
<i>Empidonax trallii extimus</i> SOUTHWESTERN WILLOW FLYCATCHER	E	E	No Potential	No Potential	No Potential	No Potential	No Potential	No Potential	Fresno: No Potential KCH: No Potential KCGW: No Potential KCGSE: No Potential KCGSW: No Potential
<i>Falco peregrinus anatum</i> AMERICAN PEREGRINE FALCON	Delisted	E/FP	Moderate	Moderate	Moderate	Moderate	Moderate	Moderate	Fresno: Moderate KCH: Moderate KCGW: Moderate KCGSE: Moderate KCGSW: Moderate
<i>Geothlypis trichas</i> COMMON YELLOWTHROAT (SINUOSA SSP.)	BCC	--	No Potential	No Potential	No Potential	No Potential	No Potential	No Potential	Fresno: No Potential KCH: No Potential KCGW: No Potential KCGSE: No Potential KCGSW: No Potential
<i>Grus canadensis canadensis</i> LESSER SANDHILL CRANE	--	SSC	High	Moderate	Moderate	High	Moderate	Moderate	Fresno: Low KCH: Low KCGW: Low KCGSE: Low KCGSW: Low
<i>Grus canadensis tabida</i> GREATER SANDHILL CRANE	--	T/FP	High	Low	Moderate	High	Moderate	Moderate	Fresno: Low KCH: Low KCGW: Low KCGSE: Low KCGSW: Low



**Attachment 2**  
 Special-Status Wildlife Species with Potential to Occur in the Project Vicinity

Scientific Name Common Name	Federal Status <sup>b</sup>	State Status <sup>c</sup>	Potential to Occur <sup>a</sup>						Heavy Maintenance Facilities <sup>d</sup>
			BNSF Alternative	Corcoran Elevated Alternative	Corcoran Bypass Alternative	Allensworth Bypass Alternative	Wasco-Shafter Bypass Alternative	Bakersfield South Alternative	
<i>Gymnogyps californianus</i> CALIFORNIA CONDOR	E	E/FP	No Potential	No Potential	No Potential	No Potential	No Potential	No Potential	Fresno: No Potential KCH: No Potential KCGW: No Potential KCGSE: No Potential KCGSW: No Potential
<i>Haematopus bachmani</i> BLACK OYSTERCATCHER	BCC	--	No Potential	No Potential	No Potential	No Potential	No Potential	No Potential	Fresno: No Potential KCH: No Potential KCGW: No Potential KCGSE: No Potential KCGSW: No Potential
<i>Haliaeetus leucocephalus</i> BALD EAGLE	Delisted	E/FP	Moderate	Moderate	Moderate	Moderate	Moderate	Moderate	Fresno: Moderate KCH: Moderate KCGW: Moderate KCGSE: Moderate KCGSW: Moderate
<i>Icteria virens</i> YELLOW-BREASTED CHAT	--	SSC	Low	Low	Low	Low	Low	Low	Fresno: Low KCH: Low KCGW: Low KCGSE: Low KCGSW: Low

**Attachment 2**  
 Special-Status Wildlife Species with Potential to Occur in the Project Vicinity

			Potential to Occur <sup>a</sup>						
Scientific Name Common Name	Federal Status <sup>b</sup>	State Status <sup>c</sup>	BNSF Alternative	Corcoran Elevated Alternative	Corcoran Bypass Alternative	Allensworth Bypass Alternative	Wasco-Shafter Bypass Alternative	Bakersfield South Alternative	Heavy Maintenance Facilities <sup>d</sup>
<i>Ixobrychus exilis</i> LEAST BITTERN	--	SSC	Moderate	Low	Moderate	Moderate	Low	Low	Fresno: Low KCH: Low KCGW: Low KCGSE: Low KCGSW: Low
<i>Lanius ludovicianus</i> LOGGERHEAD SHRIKE	--	SSC	Moderate	Moderate	Moderate	High	Moderate	Moderate	Fresno: Moderate KCH: Moderate KCGW: Moderate KCGSE: Moderate KCGSW: Moderate
<i>Laterallus jamaicensis</i> BLACK RAIL	BCC	SSC	No Potential	No Potential	No Potential	No Potential	No Potential	No Potential	Fresno: No Potential KCH: No Potential KCGW: No Potential KCGSE: No Potential KCGSW: No Potential
<i>Limnodromus griseus</i> SHORT-BILLED DOWITCHER	BCC	--	No Potential	No Potential	No Potential	No Potential	No Potential	No Potential	Fresno: No Potential KCH: No Potential KCGW: No Potential KCGSE: No Potential KCGSW: No Potential
<i>Limosa fedoa</i> MARBLED GODWIT	BCC	--	No Potential	No Potential	No Potential	No Potential	No Potential	No Potential	Fresno: No Potential KCH: No Potential KCGW: No Potential KCGSE: No Potential KCGSW: No Potential

**Attachment 2**  
 Special-Status Wildlife Species with Potential to Occur in the Project Vicinity

Scientific Name Common Name	Federal Status <sup>b</sup>	State Status <sup>c</sup>	Potential to Occur <sup>a</sup>						Heavy Maintenance Facilities <sup>d</sup>
			BNSF Alternative	Corcoran Elevated Alternative	Corcoran Bypass Alternative	Allensworth Bypass Alternative	Wasco-Shafter Bypass Alternative	Bakersfield South Alternative	
<i>Melanerpes lewis</i> LEWIS'S WOODPECKER	BCC	--	Low	Low	Low	Low	Low	Low	Fresno: Low KCH: Low KCGW: Low KCGSE: Low KCGSW: Low
<i>Melospiza melodia</i> SONG SPARROW (GRAMINEA SSP.)	BCC	SSC	No Potential	No Potential	No Potential	No Potential	No Potential	No Potential	Fresno: No Potential KCH: No Potential KCGW: No Potential KCGSE: No Potential KCGSW: No Potential
<i>Melospiza melodia</i> SONG SPARROW (MAXILLARIS SSP.)	BCC	SSC	No Potential	No Potential	No Potential	No Potential	No Potential	No Potential	Fresno: No Potential KCH: No Potential KCGW: No Potential KCGSE: No Potential KCGSW: No Potential
<i>Melospiza melodia</i> SONG SPARROW (PUSILLULA SSP.)	BCC	SSC	No Potential	No Potential	No Potential	No Potential	No Potential	No Potential	Fresno: No Potential KCH: No Potential KCGW: No Potential KCGSE: No Potential KCGSW: No Potential

**Attachment 2**  
 Special-Status Wildlife Species with Potential to Occur in the Project Vicinity

Scientific Name Common Name	Federal Status <sup>b</sup>	State Status <sup>c</sup>	Potential to Occur <sup>a</sup>						Heavy Maintenance Facilities <sup>d</sup>
			BNSF Alternative	Corcoran Elevated Alternative	Corcoran Bypass Alternative	Allensworth Bypass Alternative	Wasco-Shafter Bypass Alternative	Bakersfield South Alternative	
<i>Melospiza melodia</i> SONG SPARROW (SAMUELIS SSP.)	BCC	SSC	No Potential	No Potential	No Potential	No Potential	No Potential	No Potential	Fresno: No Potential KCH: No Potential KCGW: No Potential KCGSE: No Potential KCGSW: No Potential
<i>Numenius americanus</i> LONG-BILLED CURLEW	BCC	--	Moderate	Moderate	Moderate	Moderate	Moderate	Moderate	Fresno: Moderate KCH: Moderate KCGW: Moderate KCGSE: Moderate KCGSW: Moderate
<i>Numenius phaeopus</i> WHIMBREL	BCC	--	No Potential	No Potential	No Potential	No Potential	No Potential	No Potential	Fresno: No Potential KCH: No Potential KCGW: No Potential KCGSE: No Potential KCGSW: No Potential
<i>Oceanodroma homochroa</i> ASHY STORM-PETREL	BCC	SSC	No Potential	No Potential	No Potential	No Potential	No Potential	No Potential	Fresno: No Potential KCH: No Potential KCGW: No Potential KCGSE: No Potential KCGSW: No Potential
<i>Otus flammeolus</i> FLAMMULATED OWL	BCC	--	No Potential	No Potential	No Potential	No Potential	No Potential	No Potential	Fresno: No Potential KCH: No Potential KCGW: No Potential KCGSE: No Potential KCGSW: No Potential

**Attachment 2**  
 Special-Status Wildlife Species with Potential to Occur in the Project Vicinity

Scientific Name Common Name	Federal Status <sup>b</sup>	State Status <sup>c</sup>	Potential to Occur <sup>a</sup>						
			BNSF Alternative	Corcoran Elevated Alternative	Corcoran Bypass Alternative	Allensworth Bypass Alternative	Wasco-Shafter Bypass Alternative	Bakersfield South Alternative	Heavy Maintenance Facilities <sup>d</sup>
<i>Passerculus sandwichensis beldingi</i> BELDING'S SAVANNAH SPARROW	--	E	No Potential	No Potential	No Potential	No Potential	No Potential	No Potential	Fresno: No Potential KCH: No Potential KCGW: No Potential KCGSE: No Potential KCGSW: No Potential
<i>Pelecanus erythrorhynchos</i> AMERICAN WHITE PELICAN	--	SSC	No Potential	No Potential	No Potential	No Potential	No Potential	No Potential	Fresno: No Potential KCH: No Potential KCGW: No Potential KCGSE: No Potential KCGSW: No Potential
<i>Phoebastria nigripes</i> BLACK-FOOTED ALBATROSS	BCC	--	No Potential	No Potential	No Potential	No Potential	No Potential	No Potential	Fresno: No Potential KCH: No Potential KCGW: No Potential KCGSE: No Potential KCGSW: No Potential
<i>Pica nuttalli</i> YELLOW-BILLED MAGPIE	BCC	--	No Potential	No Potential	No Potential	No Potential	No Potential	No Potential	Fresno: No Potential KCH: No Potential KCGW: No Potential KCGSE: No Potential KCGSW: No Potential

**Attachment 2**  
 Special-Status Wildlife Species with Potential to Occur in the Project Vicinity

Scientific Name Common Name	Federal Status <sup>b</sup>	State Status <sup>c</sup>	Potential to Occur <sup>a</sup>						Heavy Maintenance Facilities <sup>d</sup>
			BNSF Alternative	Corcoran Elevated Alternative	Corcoran Bypass Alternative	Allensworth Bypass Alternative	Wasco-Shafter Bypass Alternative	Bakersfield South Alternative	
<i>Picoides albolarvatus</i> WHITE-HEADED WOODPECKER	BCC	--	No Potential	No Potential	No Potential	No Potential	No Potential	No Potential	Fresno: No Potential KCH: No Potential KCGW: No Potential KCGSE: No Potential KCGSW: No Potential
<i>Picoides nuttallii</i> NUTTALL'S WOODPECKER	BCC	--	Low	Low	Low	Low	Low	Low	Fresno: Low KCH: Low KCGW: Low KCGSE: Low KCGSW: Low
<i>Pipilo maculatus</i> SPOTTED TOWHEE (CLEMENTAE SSP.)	BCC	SSC	No Potential	No Potential	No Potential	No Potential	No Potential	No Potential	Fresno: No Potential KCH: No Potential KCGW: No Potential KCGSE: No Potential KCGSW: No Potential
<i>Pooecetes gramineus affinis</i> OREGON VESPER SPARROW	--	SSC	Moderate	Moderate	Moderate	Moderate	Moderate	Moderate	Fresno: Moderate KCH: Moderate KCGW: Moderate KCGSE: Moderate KCGSW: Moderate
<i>Progne subis</i> PURPLE MARTIN	--	SSC	Low	Low	Low	Low	Low	Low	Fresno: Low KCH: Low KCGW: Low KCGSE: Low KCGSW: Low

**Attachment 2**  
 Special-Status Wildlife Species with Potential to Occur in the Project Vicinity

Scientific Name Common Name	Federal Status <sup>b</sup>	State Status <sup>c</sup>	Potential to Occur <sup>a</sup>						Heavy Maintenance Facilities <sup>d</sup>
			BNSF Alternative	Corcoran Elevated Alternative	Corcoran Bypass Alternative	Allensworth Bypass Alternative	Wasco-Shafter Bypass Alternative	Bakersfield South Alternative	
<i>Ptychoramphus aleuticus</i> CASSIN'S AUKLET	BCC	SSC	No Potential	No Potential	No Potential	No Potential	No Potential	No Potential	Fresno: No Potential KCH: No Potential KCGW: No Potential KCGSE: No Potential KCGSW: No Potential
<i>Puffinus creatopus</i> PINK-FOOTED SHEARWATER	BCC	--	No Potential	No Potential	No Potential	No Potential	No Potential	No Potential	Fresno: No Potential KCH: No Potential KCGW: No Potential KCGSE: No Potential KCGSW: No Potential
<i>Puffinus opisthomelas</i> BLACK-VENTED SHEARWATER	BCC	--	No Potential	No Potential	No Potential	No Potential	No Potential	No Potential	Fresno: No Potential KCH: No Potential KCGW: No Potential KCGSE: No Potential KCGSW: No Potential
<i>Rynchops niger</i> BLACK SKIMMER	BCC	SSC	No Potential	No Potential	No Potential	No Potential	No Potential	No Potential	Fresno: No Potential KCH: No Potential KCGW: No Potential KCGSE: No Potential KCGSW: No Potential

**Attachment 2**  
 Special-Status Wildlife Species with Potential to Occur in the Project Vicinity

Scientific Name Common Name	Federal Status <sup>b</sup>	State Status <sup>c</sup>	Potential to Occur <sup>a</sup>						Heavy Maintenance Facilities <sup>d</sup>
			BNSF Alternative	Corcoran Elevated Alternative	Corcoran Bypass Alternative	Allensworth Bypass Alternative	Wasco-Shafter Bypass Alternative	Bakersfield South Alternative	
<i>Selasphorus sasin</i> ALLEN'S HUMMINGBIRD	BCC	--	No Potential	No Potential	No Potential	No Potential	No Potential	No Potential	Fresno: No Potential KCH: No Potential KCGW: No Potential KCGSE: No Potential KCGSW: No Potential
<i>Spizella atrogularis</i> BLACK-CHINNED SPARROW	BCC	--	No Potential	No Potential	No Potential	No Potential	No Potential	No Potential	Fresno: No Potential KCH: No Potential KCGW: No Potential KCGSE: No Potential KCGSW: No Potential
<i>Sterna nilotica</i> GULL-BILLED TERN	BCC	SSC	No Potential	No Potential	No Potential	No Potential	No Potential	No Potential	Fresno: No Potential KCH: No Potential KCGW: No Potential KCGSE: No Potential KCGSW: No Potential
<i>Strix occidentalis</i> SPOTTED OWL (OCCIDENTALIS SSP.)	BCC	SSC	No Potential	No Potential	No Potential	No Potential	No Potential	No Potential	Fresno: No Potential KCH: No Potential KCGW: No Potential KCGSE: No Potential KCGSW: No Potential
<i>Synthliboramphus hypoleucus</i> XANTUS'S MURRELET	C/BCC	T	No Potential	No Potential	No Potential	No Potential	No Potential	No Potential	Fresno: No Potential KCH: No Potential KCGW: No Potential KCGSE: No Potential KCGSW: No Potential



**Attachment 2**  
 Special-Status Wildlife Species with Potential to Occur in the Project Vicinity

Scientific Name Common Name	Federal Status <sup>b</sup>	State Status <sup>c</sup>	Potential to Occur <sup>a</sup>						Heavy Maintenance Facilities <sup>d</sup>
			BNSF Alternative	Corcoran Elevated Alternative	Corcoran Bypass Alternative	Allensworth Bypass Alternative	Wasco-Shafter Bypass Alternative	Bakersfield South Alternative	
<i>Toxostoma lecontei</i> LE CONTE'S THRASHER	--	SSC	Moderate	No Potential	No Potential	Moderate	Moderate	Moderate	Fresno: No Potential KCH: No Potential KCGW: Low KCGSE: Low KCGSW: Low
<i>Vireo bellii pusillus</i> LEAST BELL'S VIREO	E	E	No Potential	No Potential	No Potential	No Potential	No Potential	No Potential	Fresno: No Potential KCH: No Potential KCGW: No Potential KCGSE: No Potential KCGSW: No Potential
<i>Xanthocephalus xanthocephalus</i> YELLOW-HEADED BLACKBIRD	--	SSC	Moderate	Moderate	Moderate	Moderate	Moderate	Moderate	Fresno: Moderate KCH: Moderate KCGW: Moderate KCGSE: Moderate KCGSW: Moderate
<b>Mammals</b>									
<i>Ammospermophilus nelsoni</i> NELSON'S (SAN JOAQUIN) ANTELOPE SQUIRREL	--	T	High	No Potential	No Potential	High	Moderate	Moderate	Fresno: No Potential KCH: No Potential KCGW: Low KCGSE: Moderate KCGSW: Low

**Attachment 2**  
 Special-Status Wildlife Species with Potential to Occur in the Project Vicinity

Scientific Name Common Name	Federal Status <sup>b</sup>	State Status <sup>c</sup>	Potential to Occur <sup>a</sup>						Heavy Maintenance Facilities <sup>d</sup>
			BNSF Alternative	Corcoran Elevated Alternative	Corcoran Bypass Alternative	Allensworth Bypass Alternative	Wasco-Shafter Bypass Alternative	Bakersfield South Alternative	
<i>Antrozous pallidus</i> PALLID BAT	--	SSC	Moderate	Moderate	Moderate	Moderate	Moderate	Moderate	Fresno: Moderate KCH: Moderate KCGW: Moderate KCGSE: Moderate KCGSW: Moderate
<i>Bassariscus astutus</i> RINGTAIL	--	FP	No Potential	No Potential	No Potential	No Potential	No Potential	No Potential	Fresno: No Potential KCH: No Potential KCGW: No Potential KCGSE: No Potential KCGSW: No Potential
<i>Chaetodipus californicus femoralis</i> DULZURA POCKET MOUSE	--	SSC	Moderate	No Potential	No Potential	Moderate	Moderate	Moderate	Fresno: No Potential KCH: No Potential KCGW: Low KCGSE: Moderate KCGSW: Low
<i>Corynorhinus townsendii</i> TOWNSEND'S BIG-EARED BAT	--	SSC	Moderate	Moderate	Moderate	Moderate	Moderate	Moderate	Fresno: Moderate KCH: Moderate KCGW: Moderate KCGSE: Moderate KCGSW: Moderate

**Attachment 2**  
 Special-Status Wildlife Species with Potential to Occur in the Project Vicinity

Scientific Name Common Name	Federal Status <sup>b</sup>	State Status <sup>c</sup>	Potential to Occur <sup>a</sup>						Heavy Maintenance Facilities <sup>d</sup>
			BNSF Alternative	Corcoran Elevated Alternative	Corcoran Bypass Alternative	Allensworth Bypass Alternative	Wasco-Shafter Bypass Alternative	Bakersfield South Alternative	
<i>Dipodomys ingens</i> GIANT KANGAROO RAT	E	E	No Potential	No Potential	No Potential	No Potential	No Potential	No Potential	Fresno: No Potential KCH: No Potential KCGW: No Potential KCGSE: No Potential KCGSW: No Potential
<i>Dipodomys nitratooides brevinasus</i> SHORT-NOSED KANGAROO RAT	--	SSC	No Potential	No Potential	No Potential	No Potential	No Potential	No Potential	Fresno: No Potential KCH: No Potential KCGW: No Potential KCGSE: No Potential KCGSW: No Potential
<i>Dipodomys nitratooides exilis</i> FRESNO KANGAROO RAT	E	E	Low	No Potential	No Potential	No Potential	No Potential	No Potential	Fresno: Low KCH: No Potential KCGW: No Potential KCGSE: No Potential KCGSW: No Potential
<i>Dipodomys nitratooides nitratooides</i> TIPTON KANGAROO RAT	E	E	High	Low	Moderate	High	Moderate	Moderate	Fresno: No Potential KCH: Moderate KCGW: Low KCGSE: Moderate KCGSW: Low

**Attachment 2**  
 Special-Status Wildlife Species with Potential to Occur in the Project Vicinity

			Potential to Occur <sup>a</sup>							
Scientific Name Common Name	Federal Status <sup>b</sup>	State Status <sup>c</sup>	BNSF Alternative	Corcoran Elevated Alternative	Corcoran Bypass Alternative	Allensworth Bypass Alternative	Wasco-Shafter Bypass Alternative	Bakersfield South Alternative	Heavy Maintenance Facilities <sup>d</sup>	
<i>Euderma maculatum</i> SPOTTED BAT	--	SSC	No Potential	No Potential	No Potential	No Potential	No Potential	No Potential	Fresno: No Potential KCH: No Potential KCGW: No Potential KCGSE: No Potential KCGSW: No Potential	
<i>Eumops perotis californicus</i> WESTERN MASTIFF BAT	--	SSC	Moderate	No Potential	No Potential	No Potential	Moderate	Moderate	Fresno: Moderate KCH: Moderate KCGW: Moderate KCGSE: Moderate KCGSW: Moderate	
<i>Lasiurus blossevillii</i> WESTERN RED BAT	--	SSC	Moderate	Moderate	Moderate	Moderate	Moderate	Moderate	Fresno: Moderate KCH: Moderate KCGW: Moderate KCGSE: Moderate KCGSW: Moderate	
<i>Onychomys torridus ramona</i> SOUTHERN GRASSHOPPER MOUSE	--	SSC	No Potential	No Potential	No Potential	No Potential	No Potential	No Potential	Fresno: No Potential KCH: No Potential KCGW: No Potential KCGSE: No Potential KCGSW: No Potential	
<i>Onychomys torridus tularensis</i> TULARE GRASSHOPPER MOUSE	--	SSC	Moderate	Low	Moderate	Moderate	Moderate	Moderate	Fresno: Moderate KCH: Moderate KCGW: Low KCGSE: Moderate KCGSW: Low	

**Attachment 2**  
 Special-Status Wildlife Species with Potential to Occur in the Project Vicinity

Scientific Name Common Name	Federal Status <sup>b</sup>	State Status <sup>c</sup>	Potential to Occur <sup>a</sup>						Heavy Maintenance Facilities <sup>d</sup>
			BNSF Alternative	Corcoran Elevated Alternative	Corcoran Bypass Alternative	Allensworth Bypass Alternative	Wasco-Shafter Bypass Alternative	Bakersfield South Alternative	
<i>Sorex ornatus relictus</i> BUENA VISTA LAKE SHREW	E	SSC	No Potential	No Potential	No Potential	No Potential	No Potential	No Potential	Fresno: No Potential KCH: No Potential KCGW: No Potential KCGSE: No Potential KCGSW: No Potential
<i>Taxidea taxus</i> AMERICAN BADGER	--	SSC	High	Moderate	Moderate	High	Moderate	Moderate	Fresno: Moderate KCH: Moderate KCGW: Low KCGSE: Moderate KCGSW: Low
<i>Vulpes macrotis mutica</i> SAN JOAQUIN KIT FOX	E	T	High	Moderate	High	High	Moderate	High	Fresno: Low KCH: Moderate KCGW: Moderate KCGSE: High KCGSW: High

Notes:

-- = No status designation.

<sup>a</sup> **Basis for Potential to Occur Determination:**

No Potential = Outside of species' historic range or inside of the species' historical range, but outside of the species' present range.

Low = Inside of the species' present range, but no suitable habitat is present within the project footprint OR

Inside of the species' present range and suitable habitat is/is not present, but species is considered extirpated OR

Inside of the species' present range and suitable habitat is present but urbanization is expected to preclude the species' presence (i.e. City of Fresno)

Moderate = Inside of the species' historical and present range and suitable habitat is present

High = Inside of the species' historical and present range and CNDDDB observation/URS observation/state and/or federal wildlife preserves and refuges adjacent to or inside the footprint OR

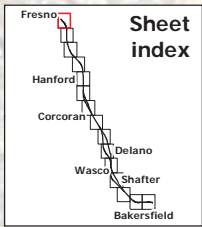
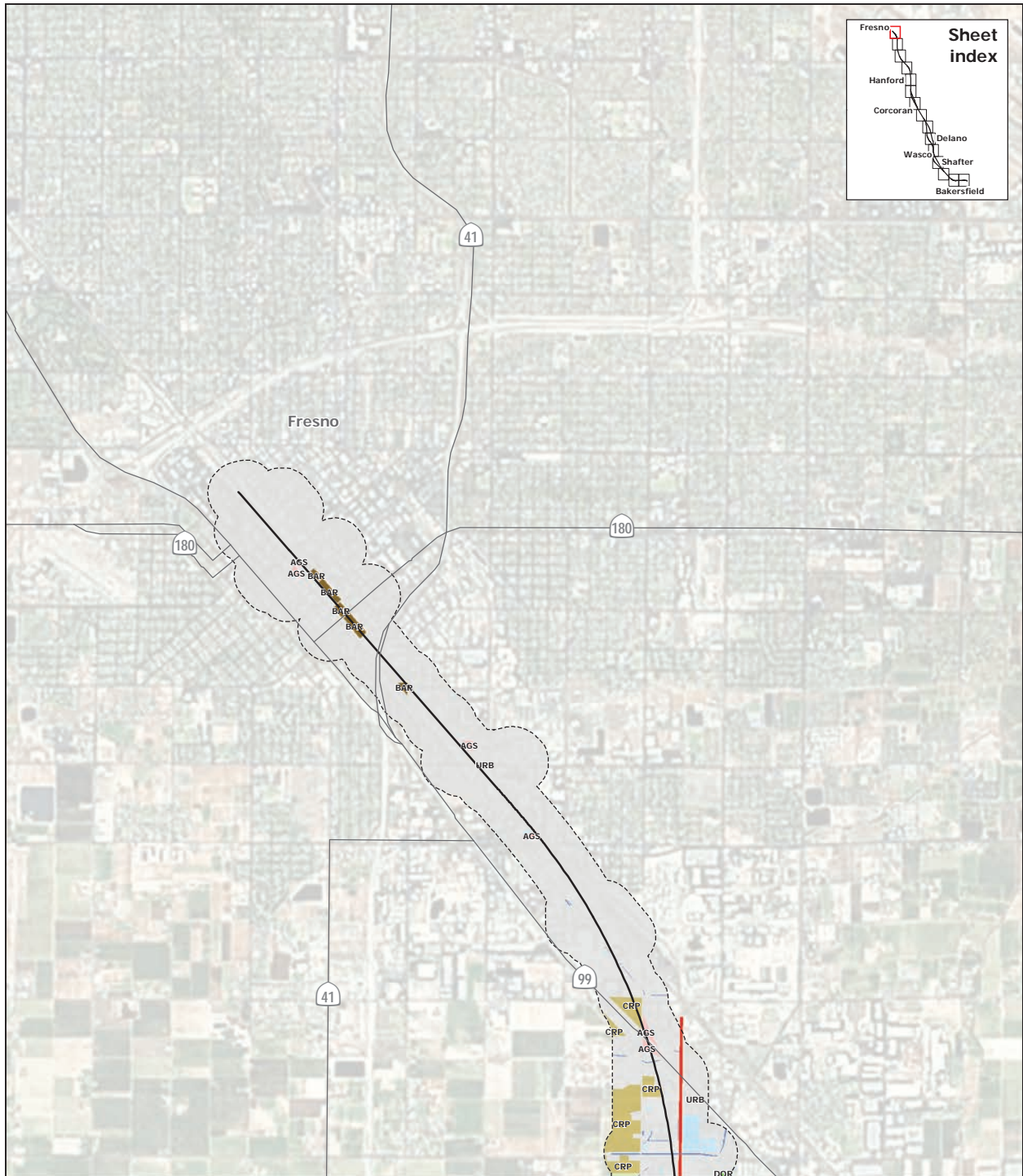
**Attachment 2**  
 Special-Status Wildlife Species with Potential to Occur in the Project Vicinity

			Potential to Occur <sup>a</sup>						
Scientific Name Common Name	Federal Status <sup>b</sup>	State Status <sup>c</sup>	BNSF Alternative	Corcoran Elevated Alternative	Corcoran Bypass Alternative	Allensworth Bypass Alternative	Wasco-Shafter Bypass Alternative	Bakersfield South Alternative	Heavy Maintenance Facilities <sup>d</sup>
<p>In the case of bird species, inside of the species' historical and present range and CNDDDB observation/URS <i>nesting</i> observation/state and appropriate federal wildlife preserves and refuges adjacent to or inside the footprint</p> <p><sup>b</sup> <b>Federal status:</b>                      PT (Proposed Threatened) = Federally proposed for listing as Threatened under Federal ESA                      E (Endangered) = Listed as endangered under Federal ESA.                      T (Threatened) = Listed as threatened under the Federal ESA.                      BCC (Birds of Conservation Concern)                      C (Candidate)                      D (Designated)</p> <p><sup>c</sup> <b>State status:</b>                      E (Endangered) = Listed as endangered under the CESA.                      T (Threatened) = Listed as threatened under the CESA.                      R (Rare) = Listed as rare under the CESA                      FP (Fully Protected) = Classified as fully protected by CDFG                      SSC (California Species of Special Concern) = Listed as a Species of Special Concern by CDFG</p> <p><sup>d</sup> <b>Heavy Maintenance Facility (HMF) Alternatives:</b>                      Fresno: Fresno HMF                      KCH: Kings County-Hanford HMF                      KCGW: Kern Council of Governments-Wasco HMF                      KCGSE: Kern Council of Governments – Shafter East HMF                      KCGSE: Kern Council of Governments – Shafter West HMF</p> <p><sup>e</sup>The coast horned lizard was observed in the Allensworth Bypass Alternative during the 2010 field surveys; due to these observations, the species' range has been extended beyond the range map provided by the CWHR to include both the Corcoran Bypass and Allensworth Bypass alternatives because of the presence of natural habitat areas in these alternatives. Source: USFWS (1998), USFWS (2005), and USFWS (2008).</p> <p><sup>f</sup> The potential for western pond turtle was determined as follows: Moderate = RIV+(AGS, FEW, LAC, PAS, URB, VRI) and within the species' range; Low = AGS, FEW, LAC, PAS, and URB and within the species' range.</p>									

**Attachment 3**

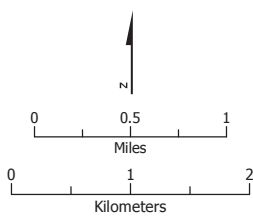
Observed Habitats within the Habitat Study Area (Figure series A3-1a to A3-1o)





PRELIMINARY DRAFT/SUBJECT TO CHANGE - HST ALIGNMENT IS NOT DETERMINED  
 Data source: URS, 2011

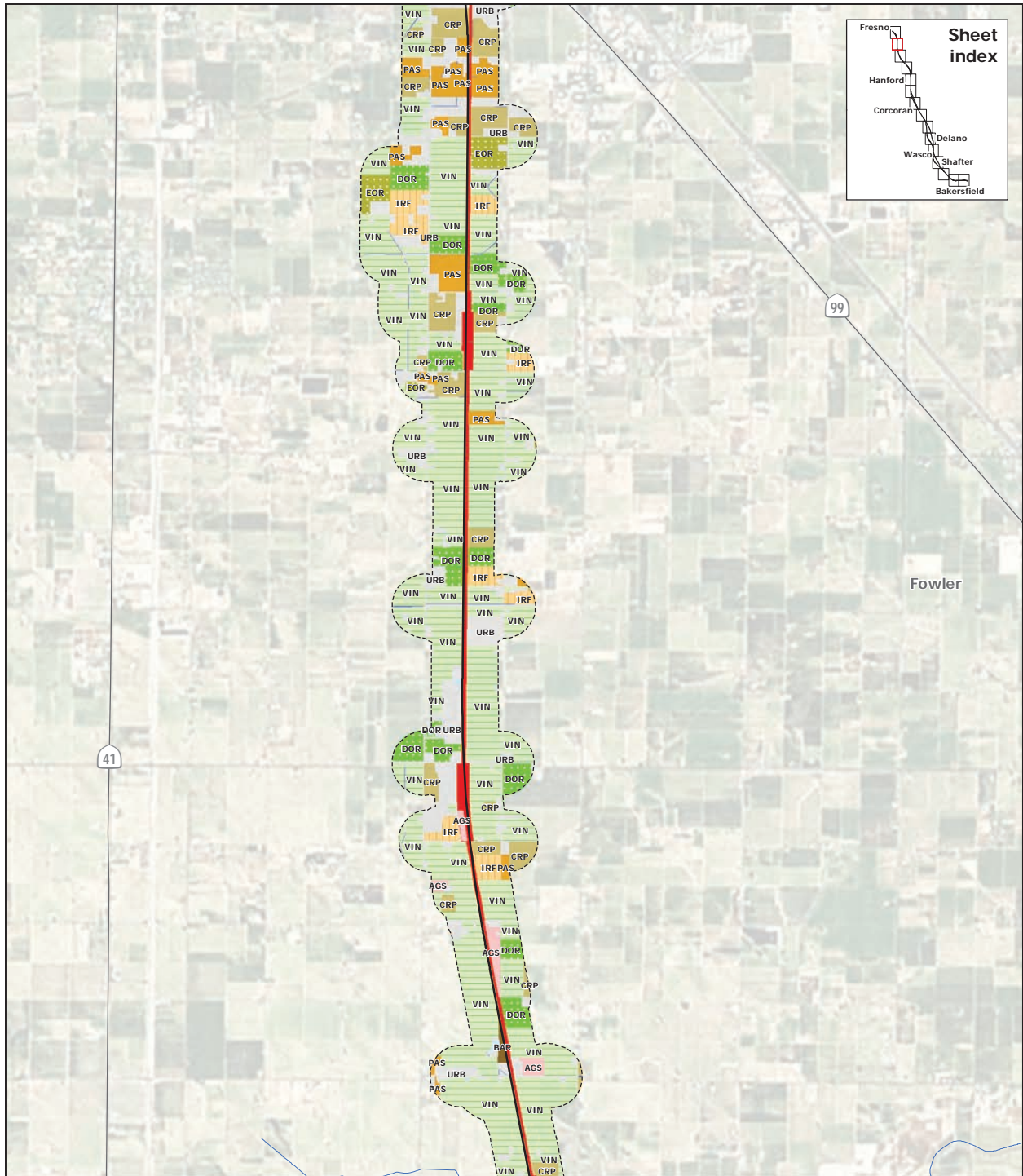
June 27, 2011



- |                           |                                      |                          |                                  |
|---------------------------|--------------------------------------|--------------------------|----------------------------------|
| — Alternative alignments  | ■ Dryland Grain Crop (DGR)           | ■ Developed area         | ■ Natural and seminatural area   |
| - - - Habitat study area  | ■ Evergreen Orchard (EOR)            | ■ Barren (BAR)           | ■ Annual Grassland (AGS)         |
| ■ BNSF right-of-way       | ■ Irrigated Grain Crop (IGR)         | ■ Urban                  | ■ Alkali Desert Scrub (ASC)      |
| - - - County boundary     | ■ Irrigated Hayfield (IRH)           | ■ Aquatic habitat        | ■ Pasture (PAS)                  |
| <b>Agricultural land</b>  | ■ Irrigated Row and Field Crop (IRF) | ■ Fresh Emergent Wetland | ■ Valley Foothill Riparian (VRI) |
| ■ Cropland (CRP)          | ■ Vineyard (VIN)                     | ■ Lacustrine             |                                  |
| ■ Deciduous Orchard (DOR) |                                      | ■ Riverine               |                                  |

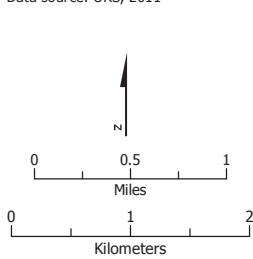
**Figure A3-1a**  
 Observed habitats within  
 the Habitat Study Area





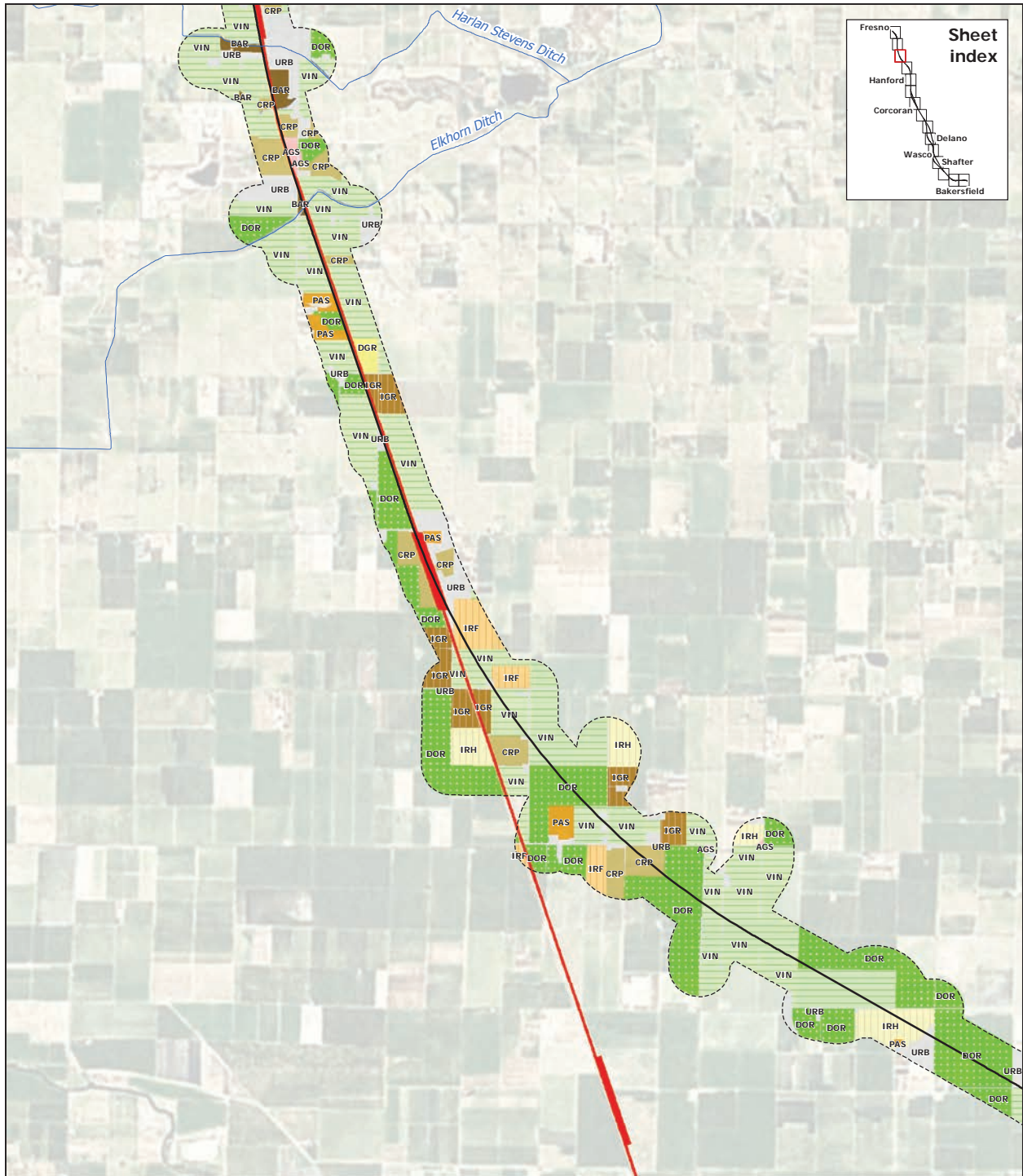
PRELIMINARY DRAFT/SUBJECT TO CHANGE - HST ALIGNMENT IS NOT DETERMINED  
 Data source: URS, 2011

June 27, 2011



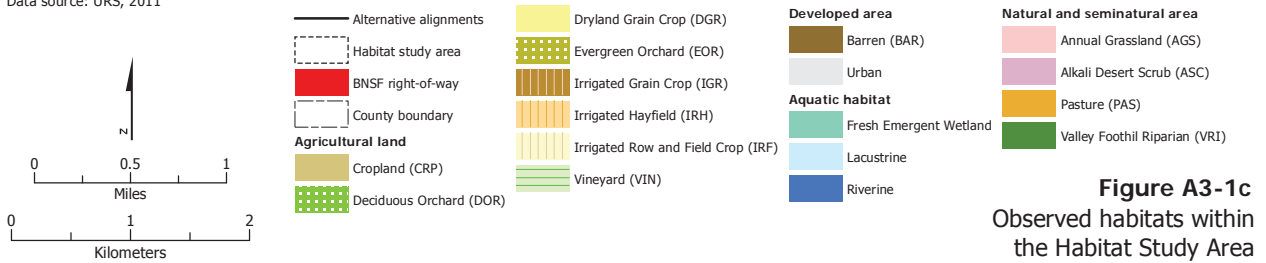
- |                           |                                      |                          |                                  |
|---------------------------|--------------------------------------|--------------------------|----------------------------------|
| — Alternative alignments  | ■ Dryland Grain Crop (DGR)           | ■ Developed area         | ■ Natural and seminatural area   |
| - - - Habitat study area  | ■ Evergreen Orchard (EOR)            | ■ Barren (BAR)           | ■ Annual Grassland (AGS)         |
| ■ BNSF right-of-way       | ■ Irrigated Grain Crop (IGR)         | ■ Urban                  | ■ Alkali Desert Scrub (ASC)      |
| - - - County boundary     | ■ Irrigated Hayfield (IRH)           | ■ Aquatic habitat        | ■ Pasture (PAS)                  |
| <b>Agricultural land</b>  | ■ Irrigated Row and Field Crop (IRF) | ■ Fresh Emergent Wetland | ■ Valley Foothill Riparian (VRI) |
| ■ Cropland (CRP)          | ■ Vineyard (VIN)                     | ■ Lacustrine             |                                  |
| ■ Deciduous Orchard (DOR) |                                      | ■ Riverine               |                                  |

**Figure A3-1b**  
 Observed habitats within  
 the Habitat Study Area



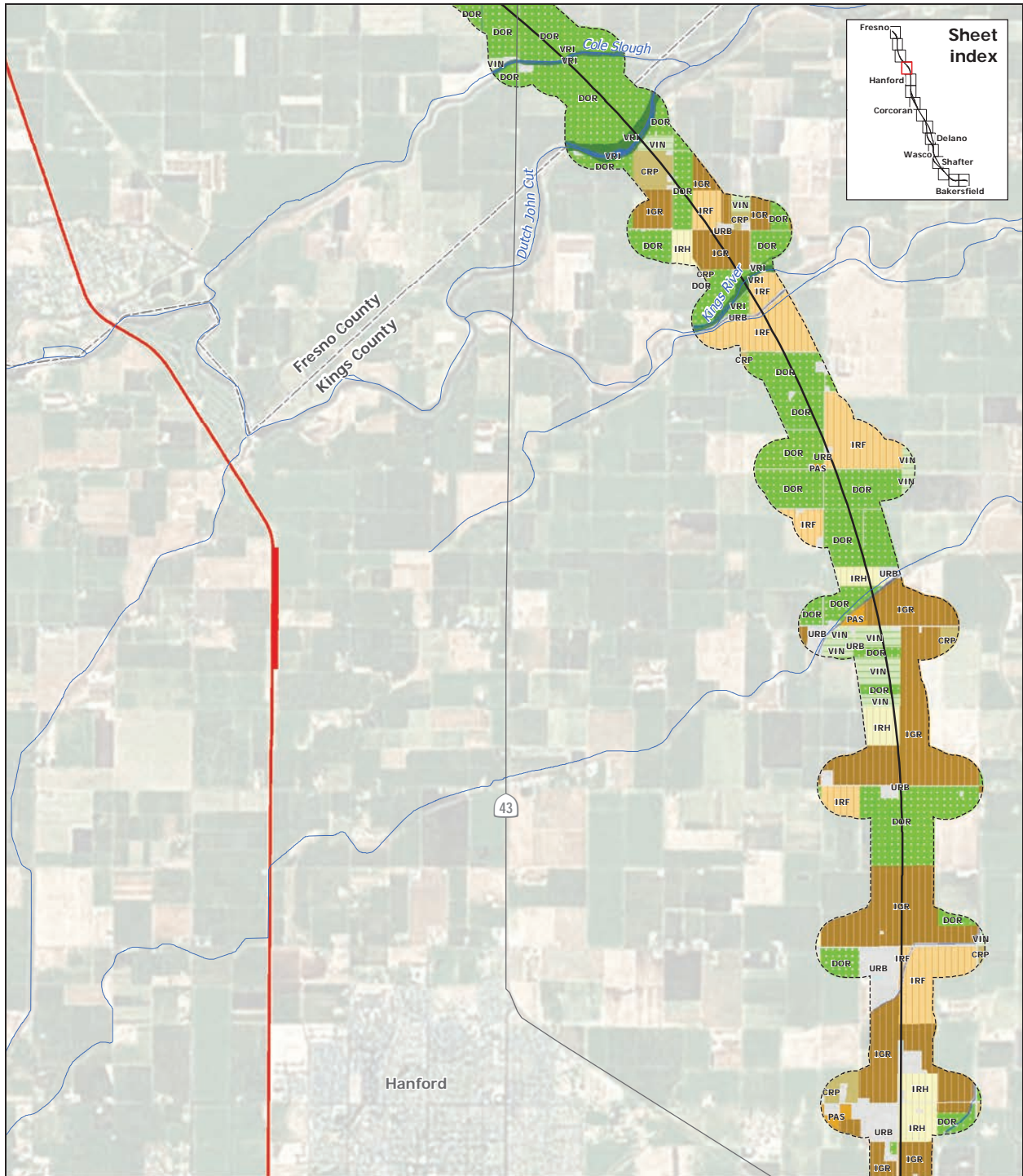
PRELIMINARY DRAFT/SUBJECT TO CHANGE - HST ALIGNMENT IS NOT DETERMINED  
 Data source: URS, 2011

June 27, 2011



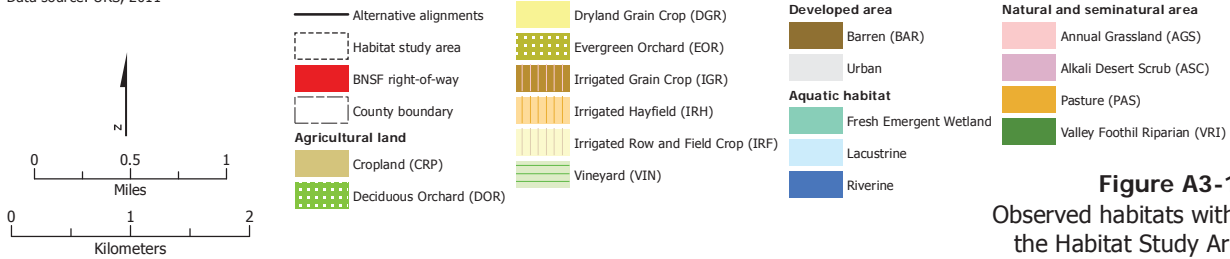
**Figure A3-1c**  
 Observed habitats within  
 the Habitat Study Area



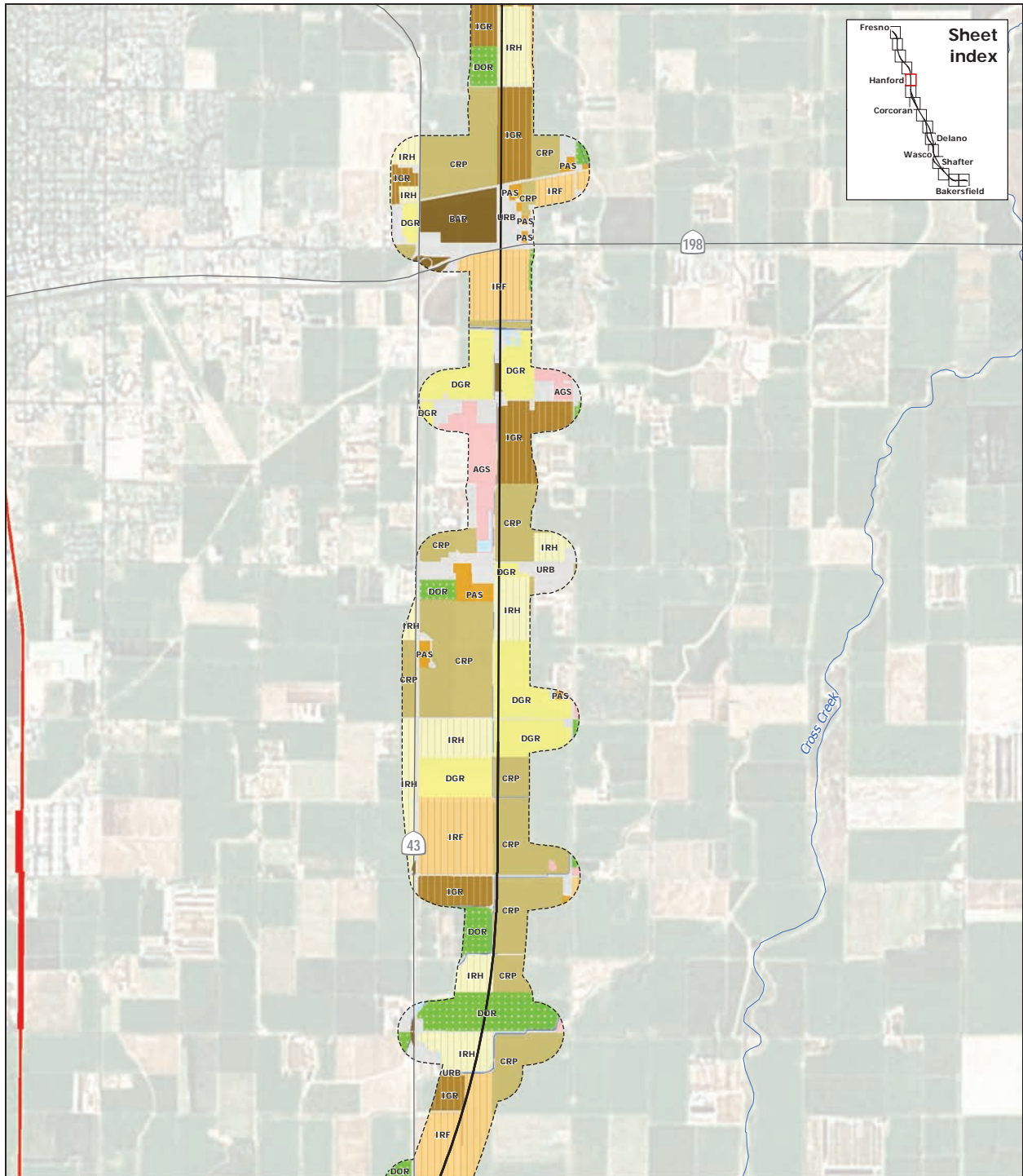


PRELIMINARY DRAFT/SUBJECT TO CHANGE - HST ALIGNMENT IS NOT DETERMINED  
 Data source: URS, 2011

June 27, 2011

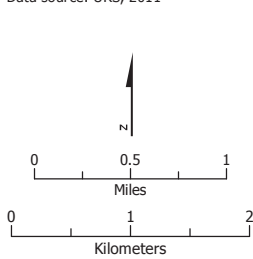


**Figure A3-1d**  
 Observed habitats within the Habitat Study Area



PRELIMINARY DRAFT/SUBJECT TO CHANGE - HST ALIGNMENT IS NOT DETERMINED  
 Data source: URS, 2011

June 27, 2011

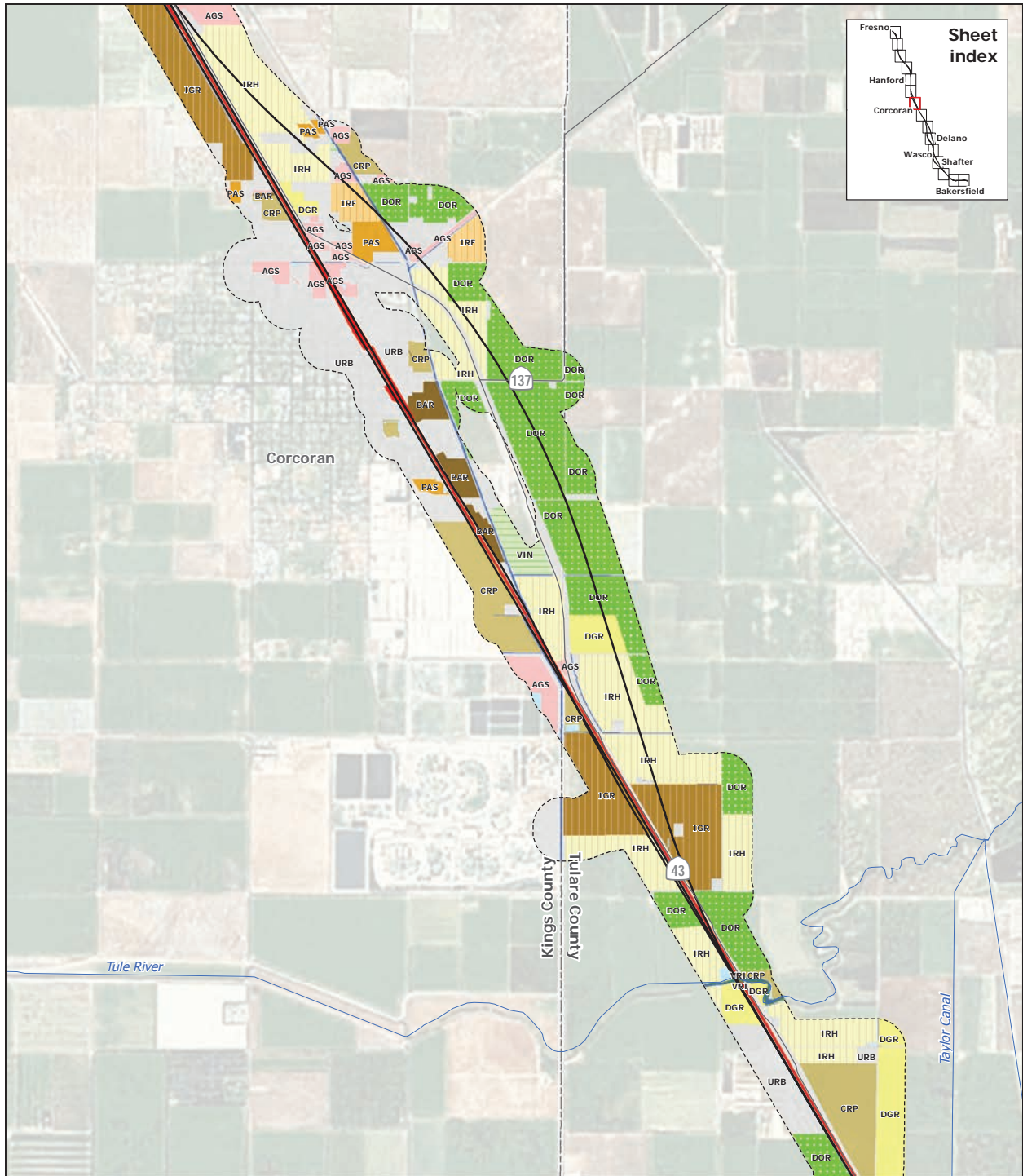


- |                           |                                      |                          |                                  |
|---------------------------|--------------------------------------|--------------------------|----------------------------------|
| — Alternative alignments  | ■ Dryland Grain Crop (DGR)           | ■ Developed area         | ■ Natural and seminatural area   |
| - - - Habitat study area  | ■ Evergreen Orchard (EOR)            | ■ Barren (BAR)           | ■ Annual Grassland (AGS)         |
| ■ BNSF right-of-way       | ■ Irrigated Grain Crop (IGR)         | ■ Urban                  | ■ Alkali Desert Scrub (ASC)      |
| - - - County boundary     | ■ Irrigated Hayfield (IRH)           | ■ Aquatic habitat        | ■ Pasture (PAS)                  |
| ■ Agricultural land       | ■ Irrigated Row and Field Crop (IRF) | ■ Fresh Emergent Wetland | ■ Valley Foothill Riparian (VRI) |
| ■ Cropland (CRP)          | ■ Vineyard (VIN)                     | ■ Lacustrine             |                                  |
| ■ Deciduous Orchard (DOR) |                                      | ■ Riverine               |                                  |

**Figure A3-1e**  
 Observed habitats within  
 the Habitat Study Area

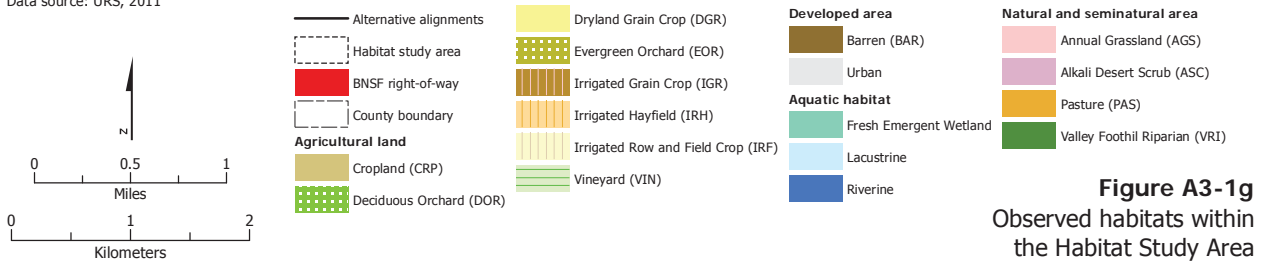






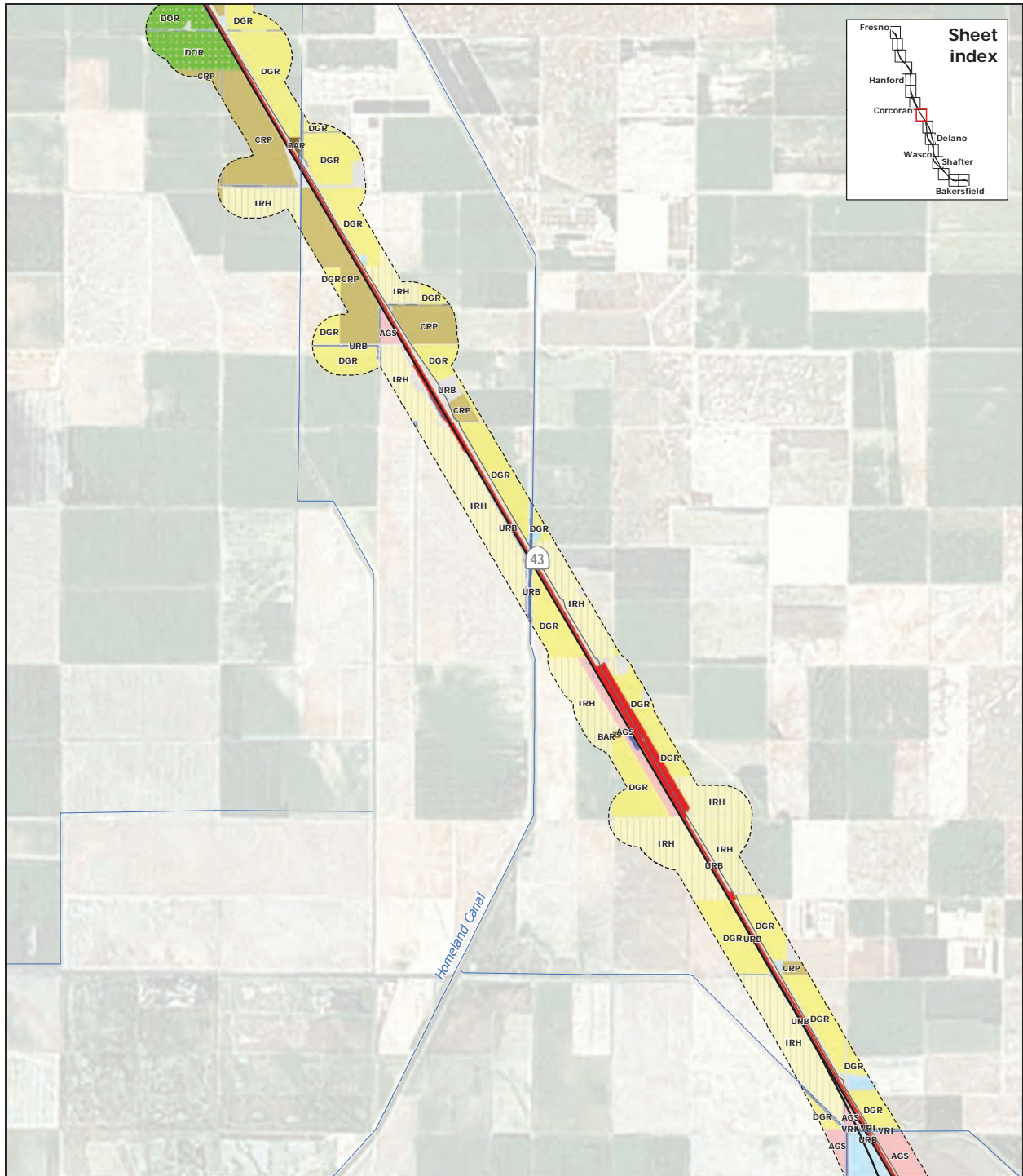
PRELIMINARY DRAFT/SUBJECT TO CHANGE - HST ALIGNMENT IS NOT DETERMINED  
 Data source: URS, 2011

June 27, 2011



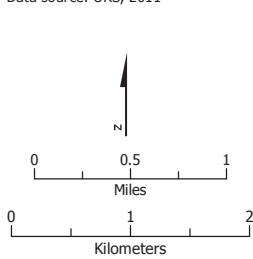
**Figure A3-1g**  
 Observed habitats within  
 the Habitat Study Area





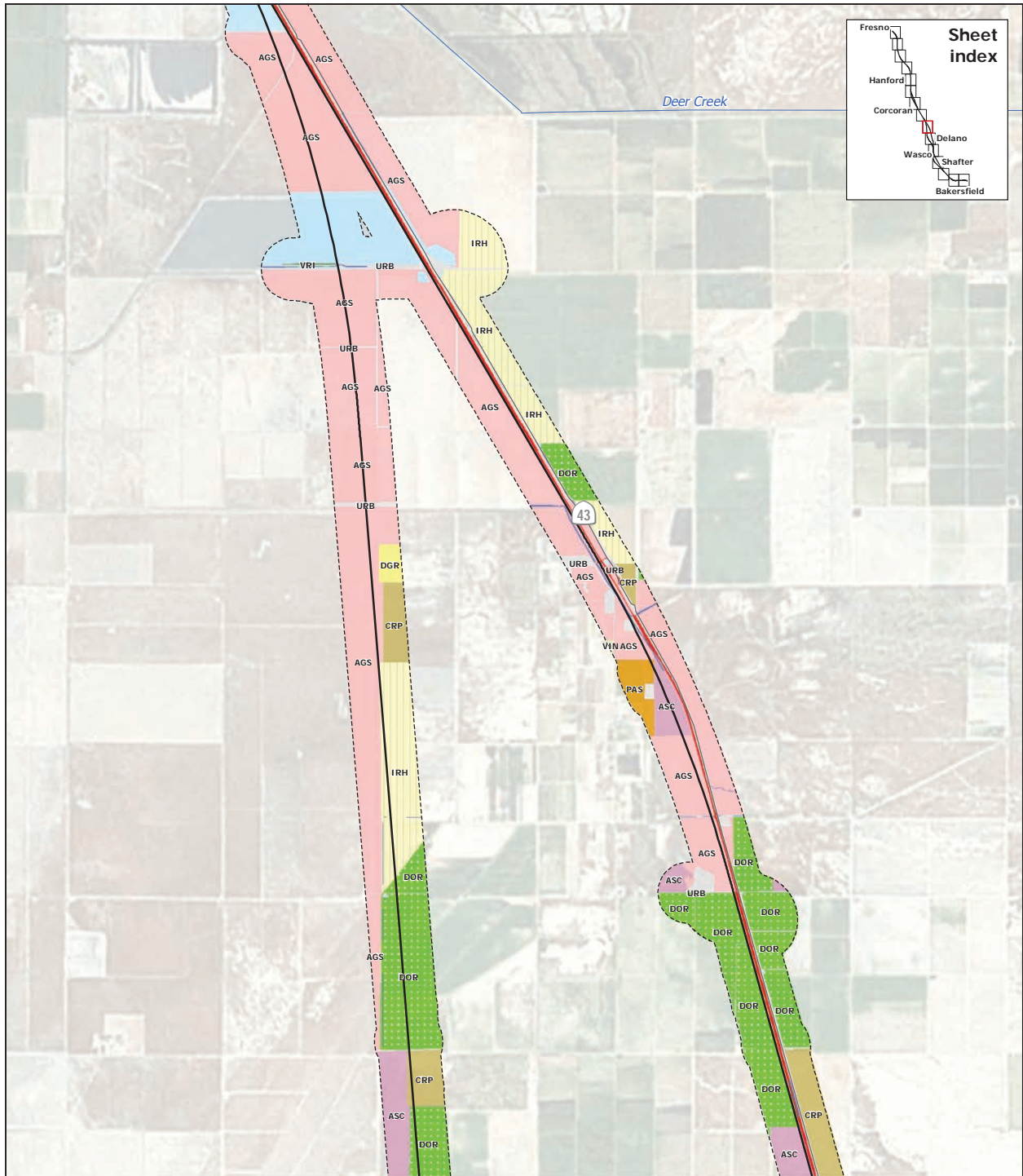
PRELIMINARY DRAFT/SUBJECT TO CHANGE - HST ALIGNMENT IS NOT DETERMINED  
 Data source: URS, 2011

June 27, 2011



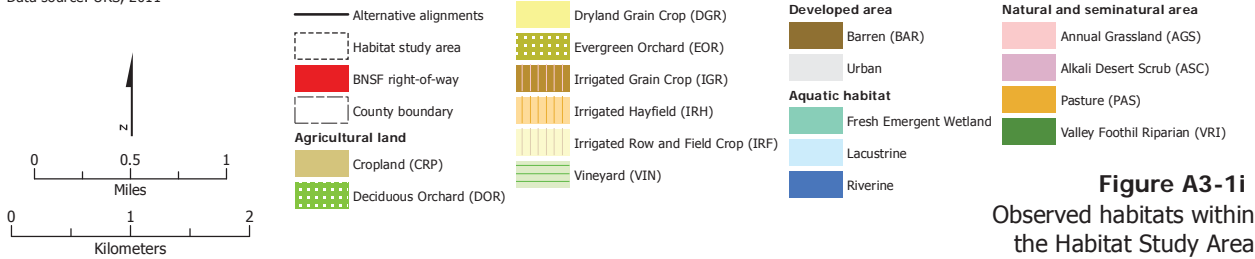
- |                           |                                      |                          |                                  |
|---------------------------|--------------------------------------|--------------------------|----------------------------------|
| — Alternative alignments  | ■ Dryland Grain Crop (DGR)           | ■ Developed area         | ■ Natural and seminatural area   |
| - - - Habitat study area  | ■ Evergreen Orchard (EOR)            | ■ Barren (BAR)           | ■ Annual Grassland (AGS)         |
| ■ BNSF right-of-way       | ■ Irrigated Grain Crop (IGR)         | ■ Urban                  | ■ Alkali Desert Scrub (ASC)      |
| - - - County boundary     | ■ Irrigated Hayfield (IRH)           | ■ Aquatic habitat        | ■ Pasture (PAS)                  |
| <b>Agricultural land</b>  | ■ Irrigated Row and Field Crop (IRF) | ■ Fresh Emergent Wetland | ■ Valley Foothill Riparian (VRI) |
| ■ Cropland (CRP)          | ■ Vineyard (VIN)                     | ■ Lacustrine             |                                  |
| ■ Deciduous Orchard (DOR) |                                      | ■ Riverine               |                                  |

**Figure A3-1h**  
 Observed habitats within  
 the Habitat Study Area



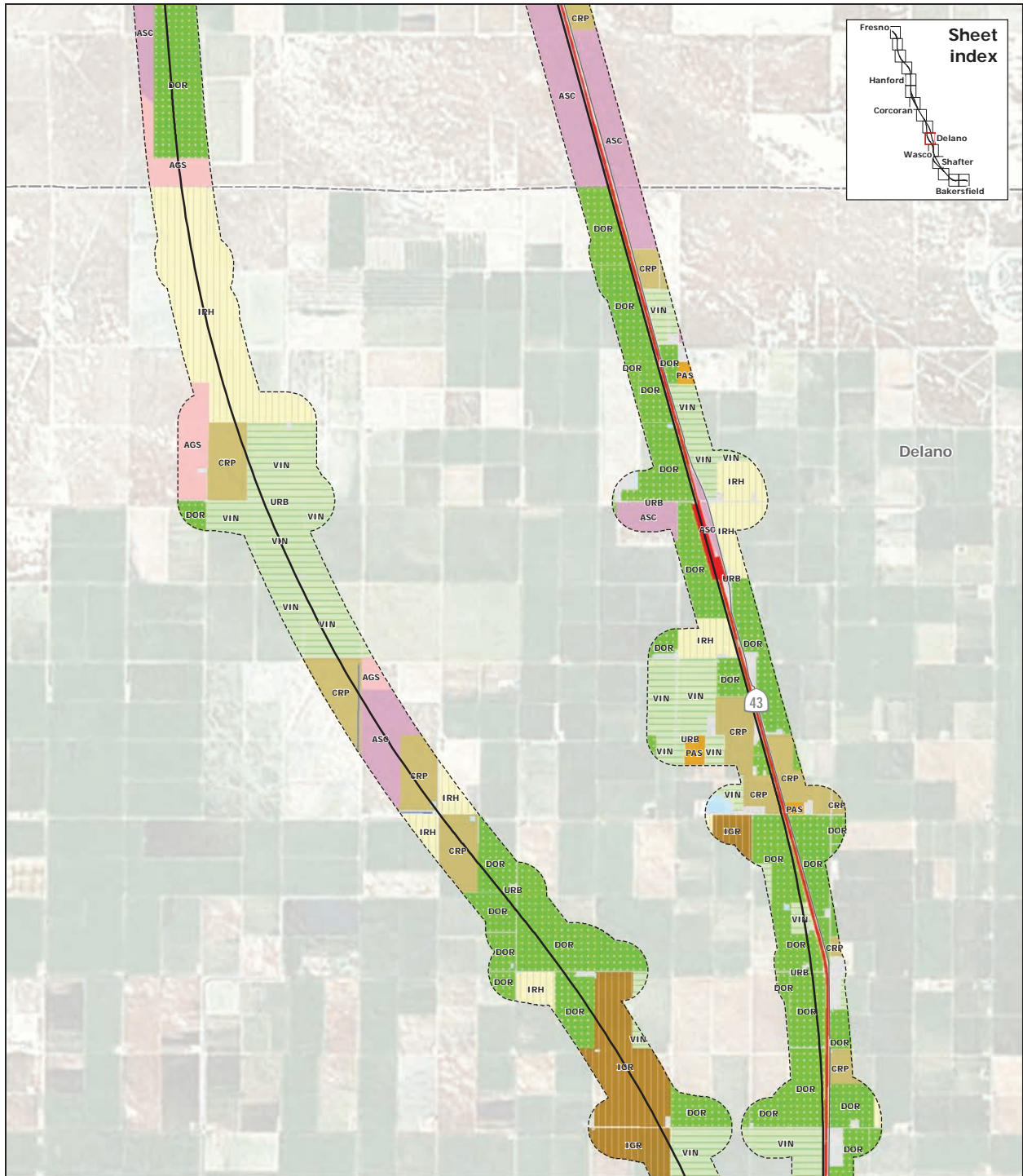
PRELIMINARY DRAFT/SUBJECT TO CHANGE - HST ALIGNMENT IS NOT DETERMINED  
 Data source: URS, 2011

June 27, 2011



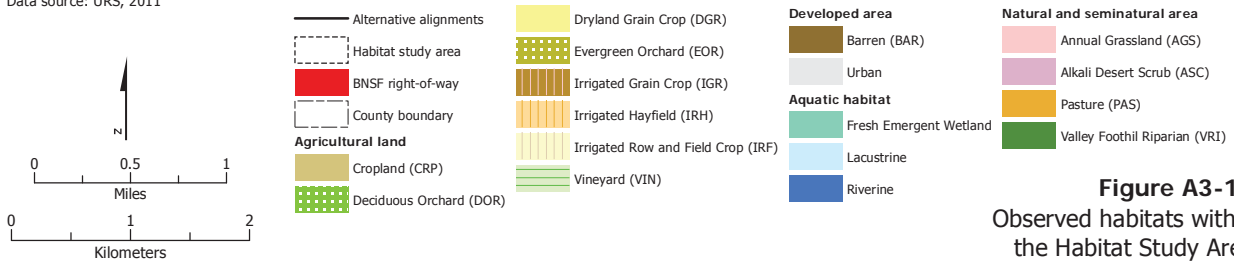
**Figure A3-1i**  
 Observed habitats within  
 the Habitat Study Area



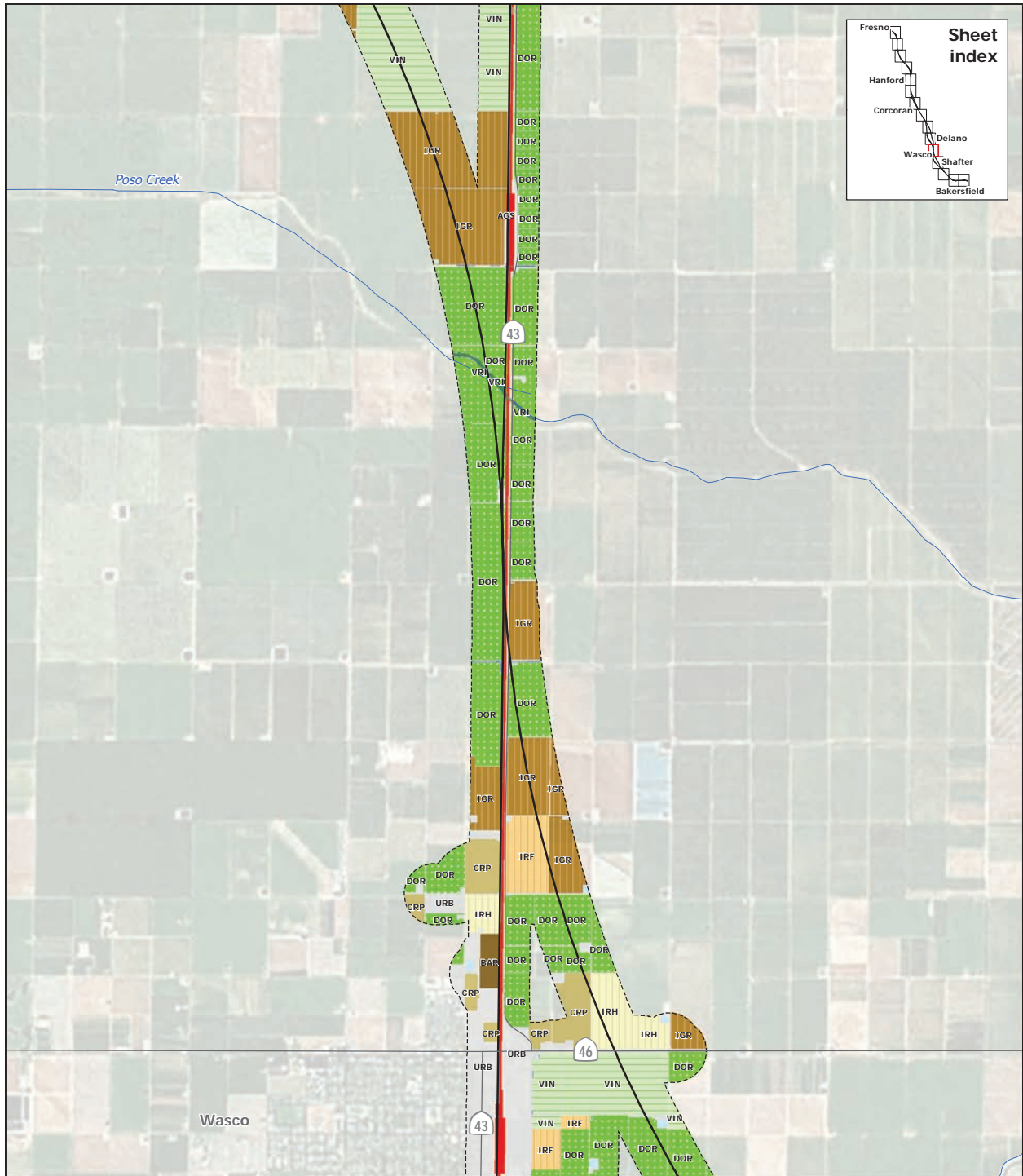


PRELIMINARY DRAFT/SUBJECT TO CHANGE - HST ALIGNMENT IS NOT DETERMINED  
 Data source: URS, 2011

June 27, 2011

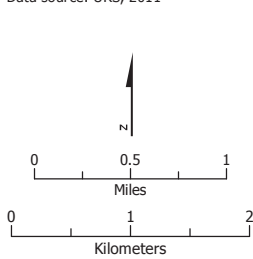


**Figure A3-1j**  
 Observed habitats within the Habitat Study Area



PRELIMINARY DRAFT/SUBJECT TO CHANGE - HST ALIGNMENT IS NOT DETERMINED  
 Data source: URS, 2011

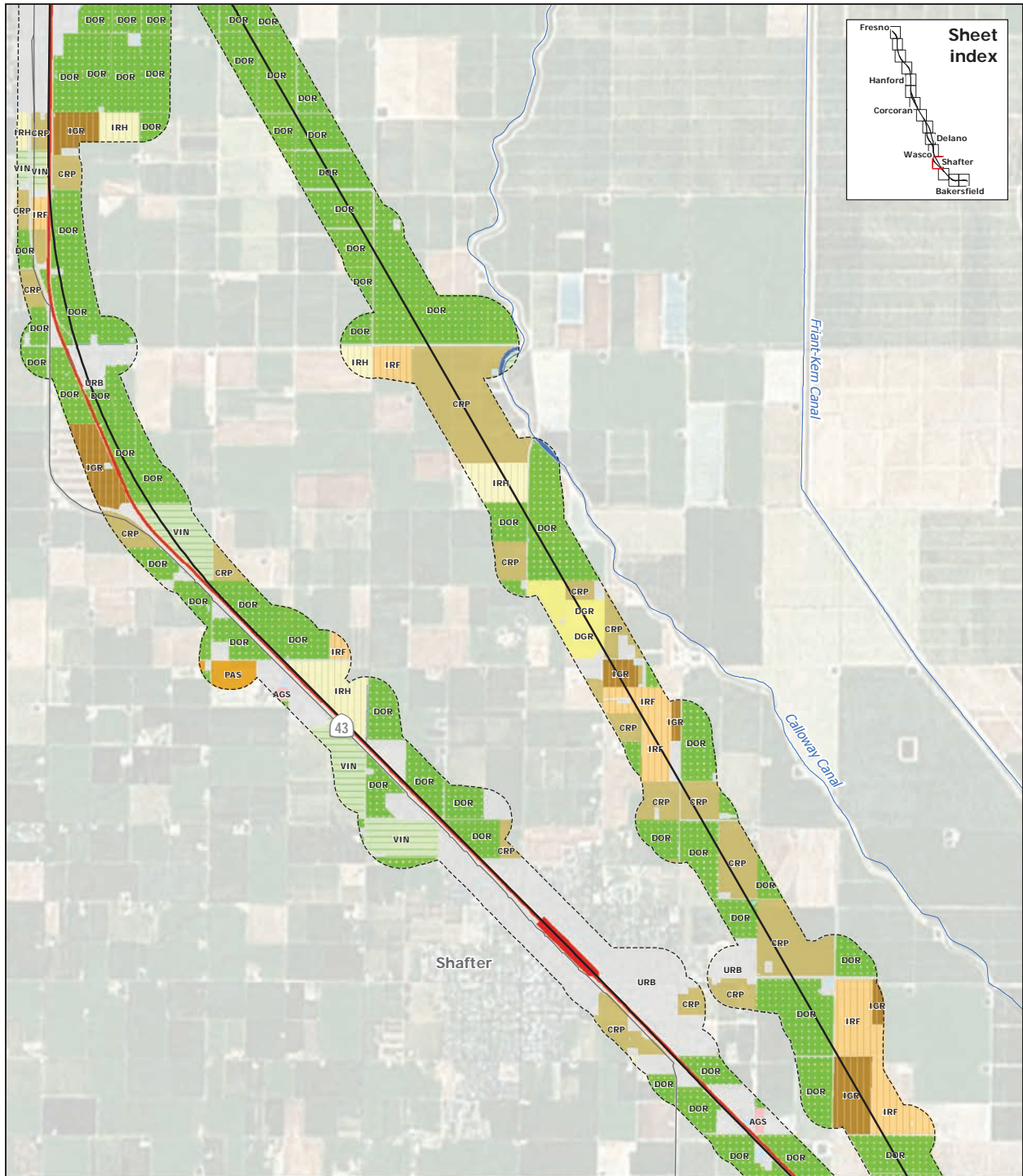
June 27, 2011



- |                           |                                      |                          |                                  |
|---------------------------|--------------------------------------|--------------------------|----------------------------------|
| — Alternative alignments  | ■ Dryland Grain Crop (DGR)           | ■ Developed area         | ■ Natural and seminatural area   |
| - - - Habitat study area  | ■ Evergreen Orchard (EOR)            | ■ Barren (BAR)           | ■ Annual Grassland (AGS)         |
| ■ BNSF right-of-way       | ■ Irrigated Grain Crop (IGR)         | ■ Urban                  | ■ Alkali Desert Scrub (ASC)      |
| - - - County boundary     | ■ Irrigated Hayfield (IRH)           | ■ Aquatic habitat        | ■ Pasture (PAS)                  |
| <b>Agricultural land</b>  | ■ Irrigated Row and Field Crop (IRF) | ■ Fresh Emergent Wetland | ■ Valley Foothill Riparian (VRI) |
| ■ Cropland (CRP)          | ■ Vineyard (VIN)                     | ■ Lacustrine             |                                  |
| ■ Deciduous Orchard (DOR) |                                      | ■ Riverine               |                                  |

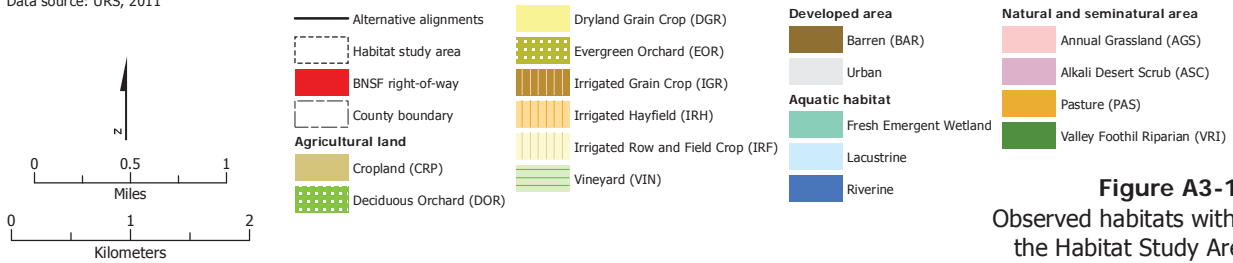
**Figure A3-1k**  
 Observed habitats within the Habitat Study Area

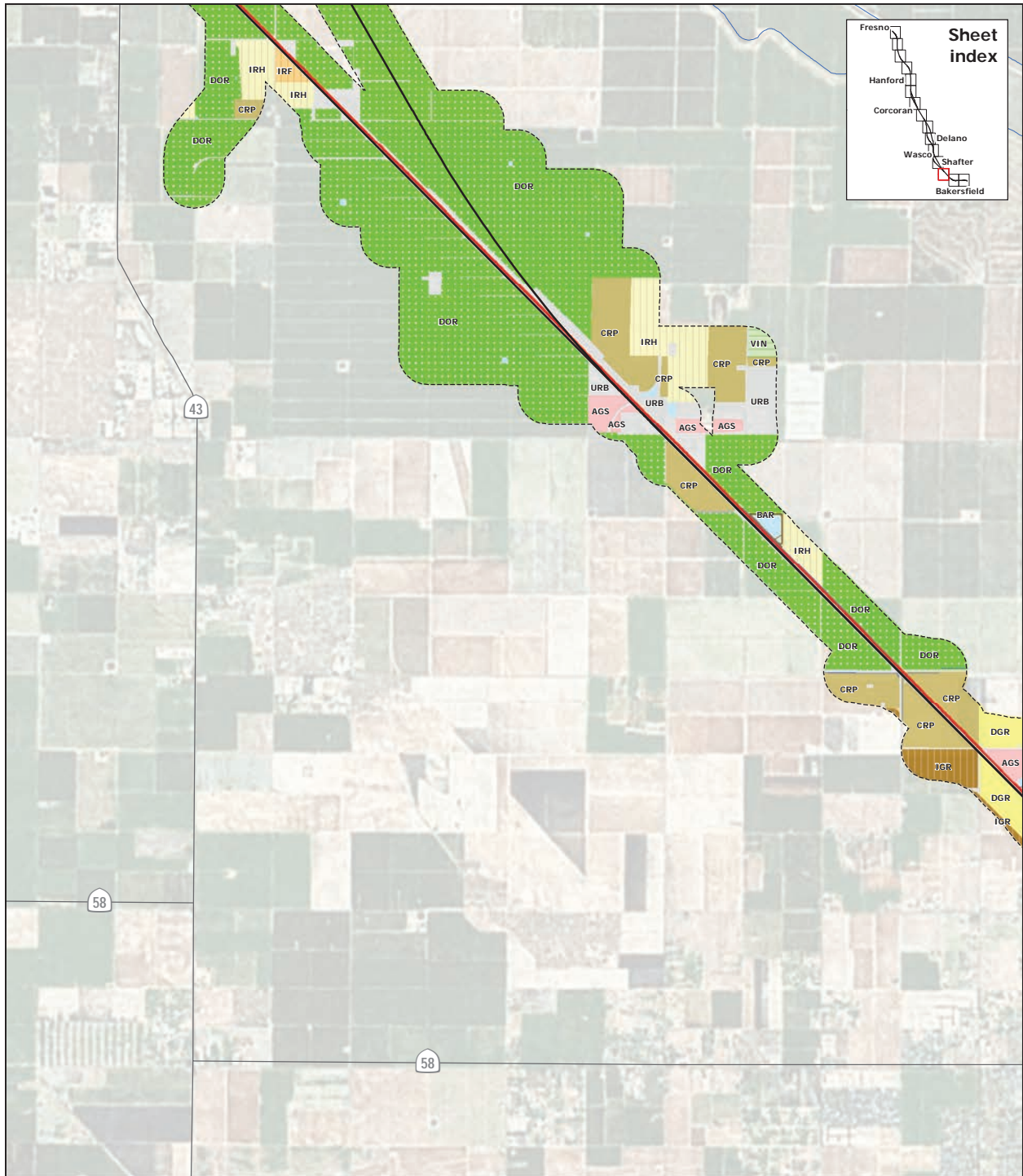




PRELIMINARY DRAFT/SUBJECT TO CHANGE - HST ALIGNMENT IS NOT DETERMINED  
 Data source: URS, 2011

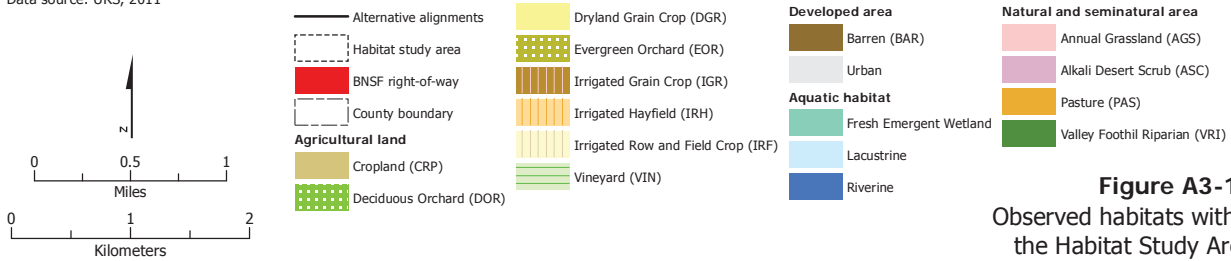
June 27, 2011





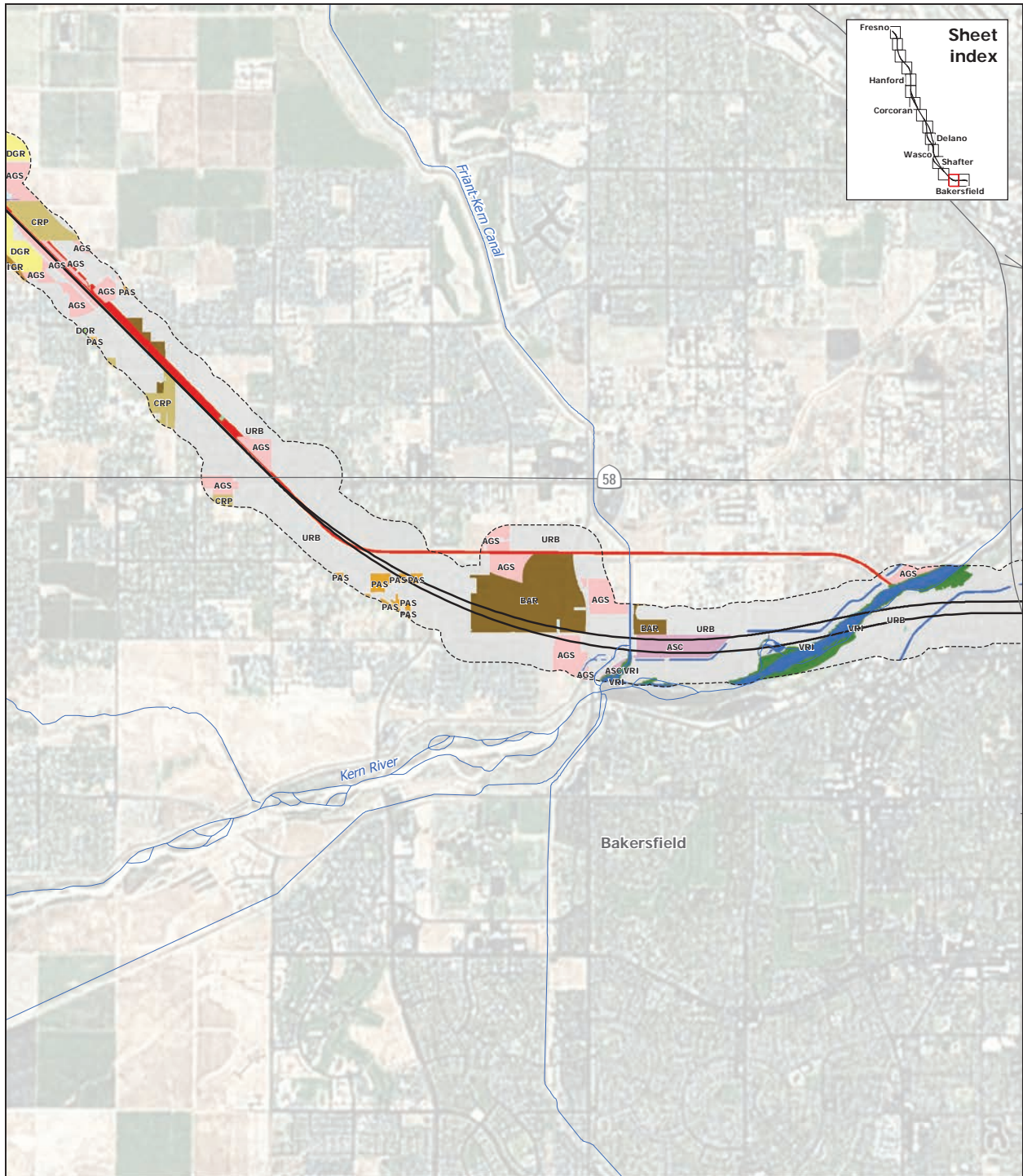
PRELIMINARY DRAFT/SUBJECT TO CHANGE - HST ALIGNMENT IS NOT DETERMINED  
 Data source: URS, 2011

June 27, 2011



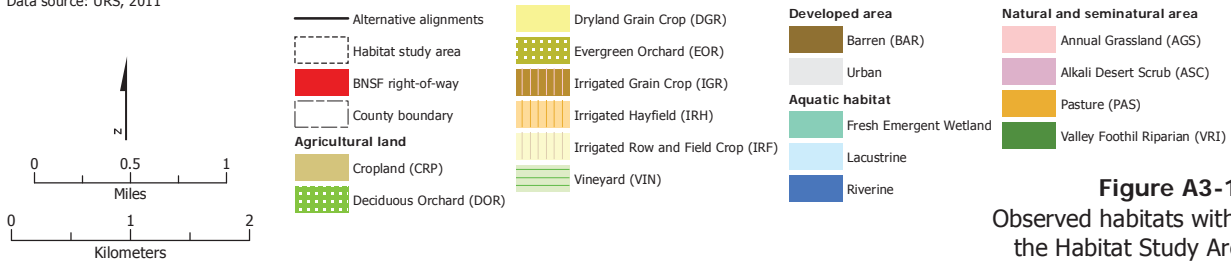
**Figure A3-1m**  
 Observed habitats within the Habitat Study Area



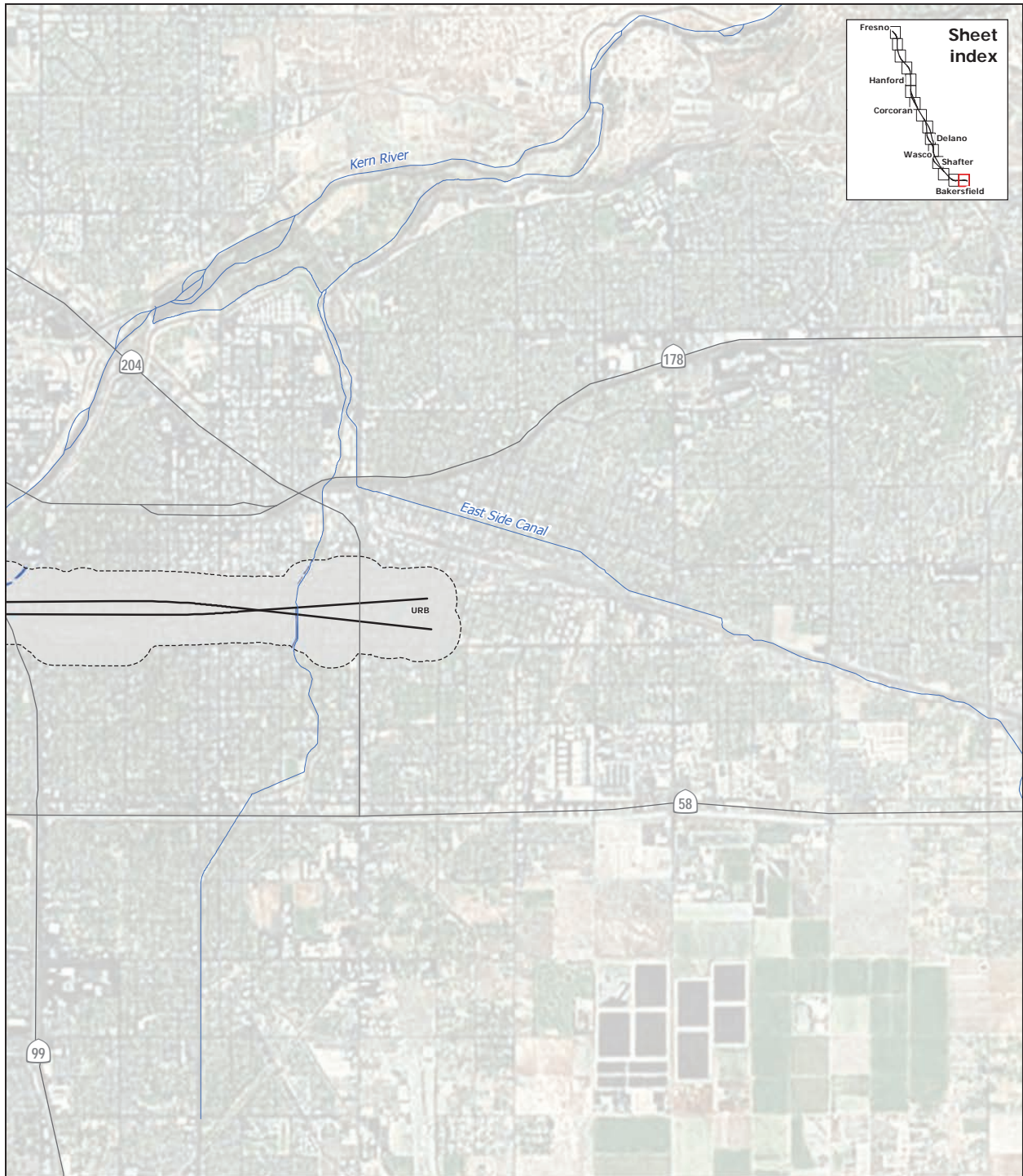


PRELIMINARY DRAFT/SUBJECT TO CHANGE - HST ALIGNMENT IS NOT DETERMINED  
 Data source: URS, 2011

June 27, 2011

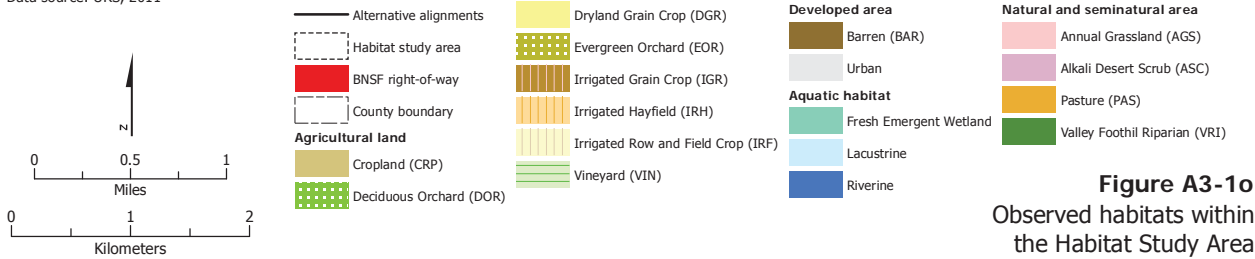


**Figure A3-1n**  
 Observed habitats within  
 the Habitat Study Area



PRELIMINARY DRAFT/SUBJECT TO CHANGE - HST ALIGNMENT IS NOT DETERMINED  
 Data source: URS, 2011

June 27, 2011



**Figure A3-10**  
 Observed habitats within  
 the Habitat Study Area