

Operation Lifesaver Presents

In the Interest of Safety

**Montana Professional
Drivers & Hazardous
Materials Companies.
FRA HAZ-MAT Conference**



About Operation Lifesaver

State of Idaho in 1972

State programs in all 50 states

Most states funded by RR assessments.

Montana joined OL in 1989

All staff and presenters in Montana are un-paid volunteers.

Non-profit 501-c-3

Since 1972 with help from our partners, OL has reduced number of collisions and trespass injuries & fatalities by 84% nation wide.

Mission

Montana Operation Lifesaver is committed to providing public educational safety information relating to highway-rail grade crossing safety and trespass dangers, however our programs only work as long as we have enforcement help from our partners.

Montana Statistics

Population = 957861 Adults & Children

Total area = 147138 square miles

4th largest state & 10th largest city USA

Budget = \$61,875.00 equals \$2.37 per sq mile .

Montana Operation Lifesaver

45 Presenters = 1 to 21285 individuals

45 Presenters = 1 covers 3269.73 sq mi

**Last 10 years 4000 presentations to
over 390000 people**

Increases

Crude oil carloads BNSF

2010	2011	2012
21,000	41,000	154,000

300 oil truck loads per 100 car unit train.

462,000 truckloads in 2012

plus 2000 Frac trucks per well.

GOOD DAY !

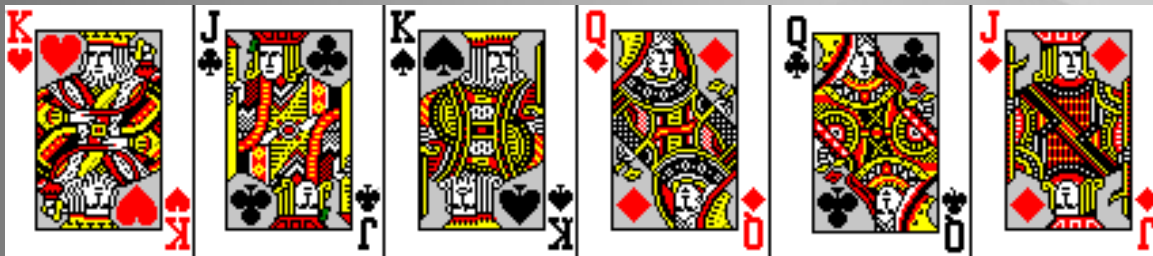
**FOR MY FIRST TRICK, THROUGH THE
POWER OF MAGIC & ILLUSION, I
AM GOING TO CONTROL
YOUR MIND THROUGH
MY COMPUTER FOR THE NEXT COUPLE
OF MINUTES.**

Please mentally select a card and concentrate on it.

Please, don't call your card out loud!

I will perform this feat via mind control...

After you have memorised your card, please raise your hand.....



And now, say the name of your card silently to your self.

Please don't skip this part, it is very important.

Raise your hand when done.....

I have selected your card and
have removed it from the pile.

Surprised?



Just as your card disappeared, a train can appear to be a long way from a railroad crossing, but if you make the wrong decision, all that space you thought you had to beat the train in can disappear just as quickly if you make a bad decision.

My job over the next few minutes is to share important information that could result in:

**SAVING YOUR LIFE WHEN APPROACHING
RAILROAD CROSSINGS!**

It Happens Every Day...

**“Train Pushes Car Half Mile,
Three People Die”**

**“Person Struck and Killed
While Walking On Tracks”**

Union-Tribune.

The 3 E's of Operation Lifesaver

EDUCATION

ENGINEERING

ENFORCEMENT



Our Message is for Everyone





Presenter Training Classroom



Rail Safety For Emergency Responders

Billings Fire Department



Law Enforcement GCCI Railroad Operations



Railroad Equipment Operations GCCI Train Operations



Amtrak Derailment **What If !!!**

On Today's Menu

- **Train Dynamics**
- **Crossing Dynamics**
- **Driver Dynamics**



Trains Can't Swerve



Trains Can't Swerve



Approximate Stopping Distance



200 Ft



230 Ft



300 Ft =



At 55 MPH



600 Ft : **NOTE! This isn't AMTRAK!**

>5280 Ft or **18** Football Fields



=



Weight Ratio



12
Ounces



3000 lbs



3000 lbs



12 Million
Lb.



4000 to 1 weight ratio difference



The Manifest

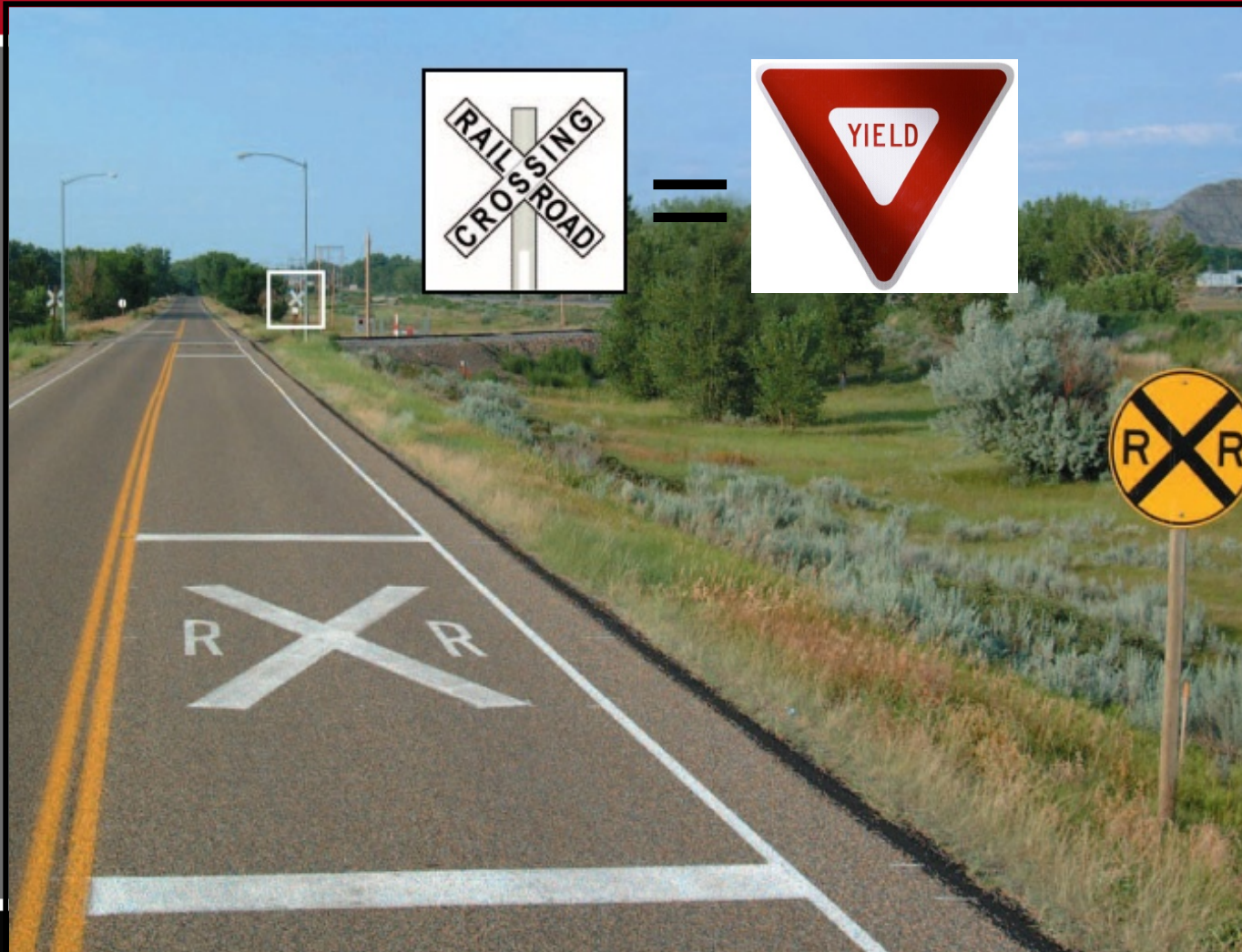
- **Train Dynamics**
- **Crossing Dynamics**
- **Driver Dynamics**

Passive Crossing

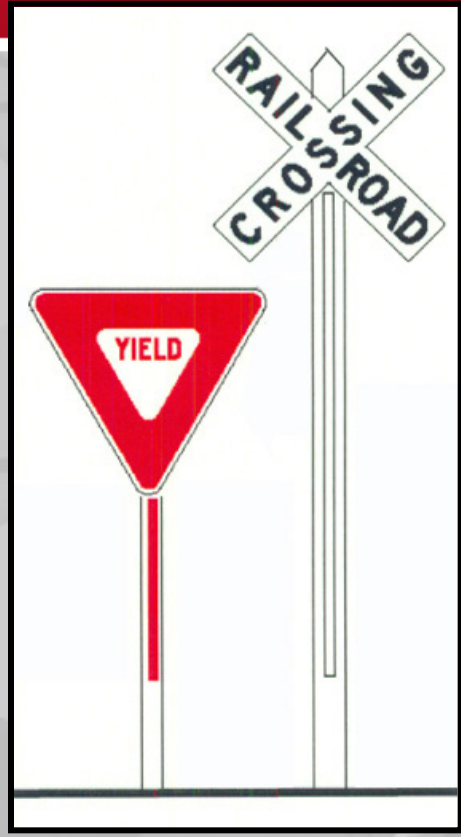
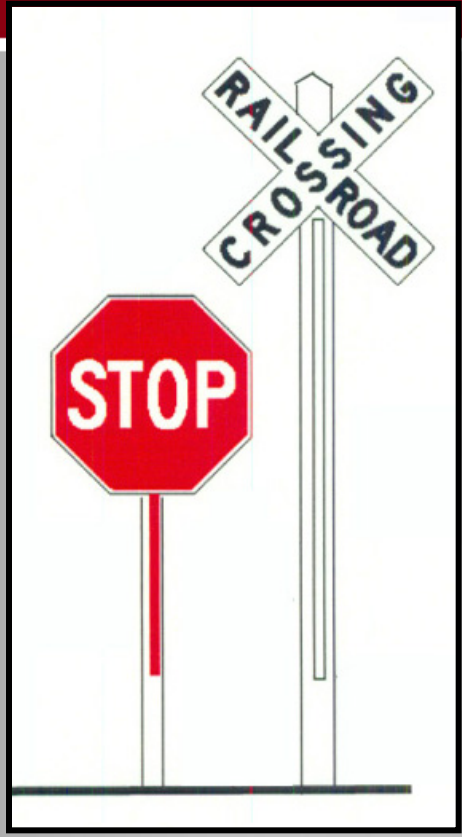




Passive Crossing



Passive Crossing Signs



NO TRAIN HORN



Active Warning Devices



Multiple Tracks



Driving Around the Gate



Emergency Notification System

**TO REPORT STALLED
VEHICLE ON TRACKS OR
OTHER EMERGENCY
CALL 1-800-555-5555
AND REFER TO
CROSSING #123-123A
ON CHERRY STREET**



The Manifest

- **Train Dynamics**
- **Crossing Dynamics**
- **Driver Dynamics**

Any Time is Train Time



SLOW DOWN

Scan For Trains



Look for Indications

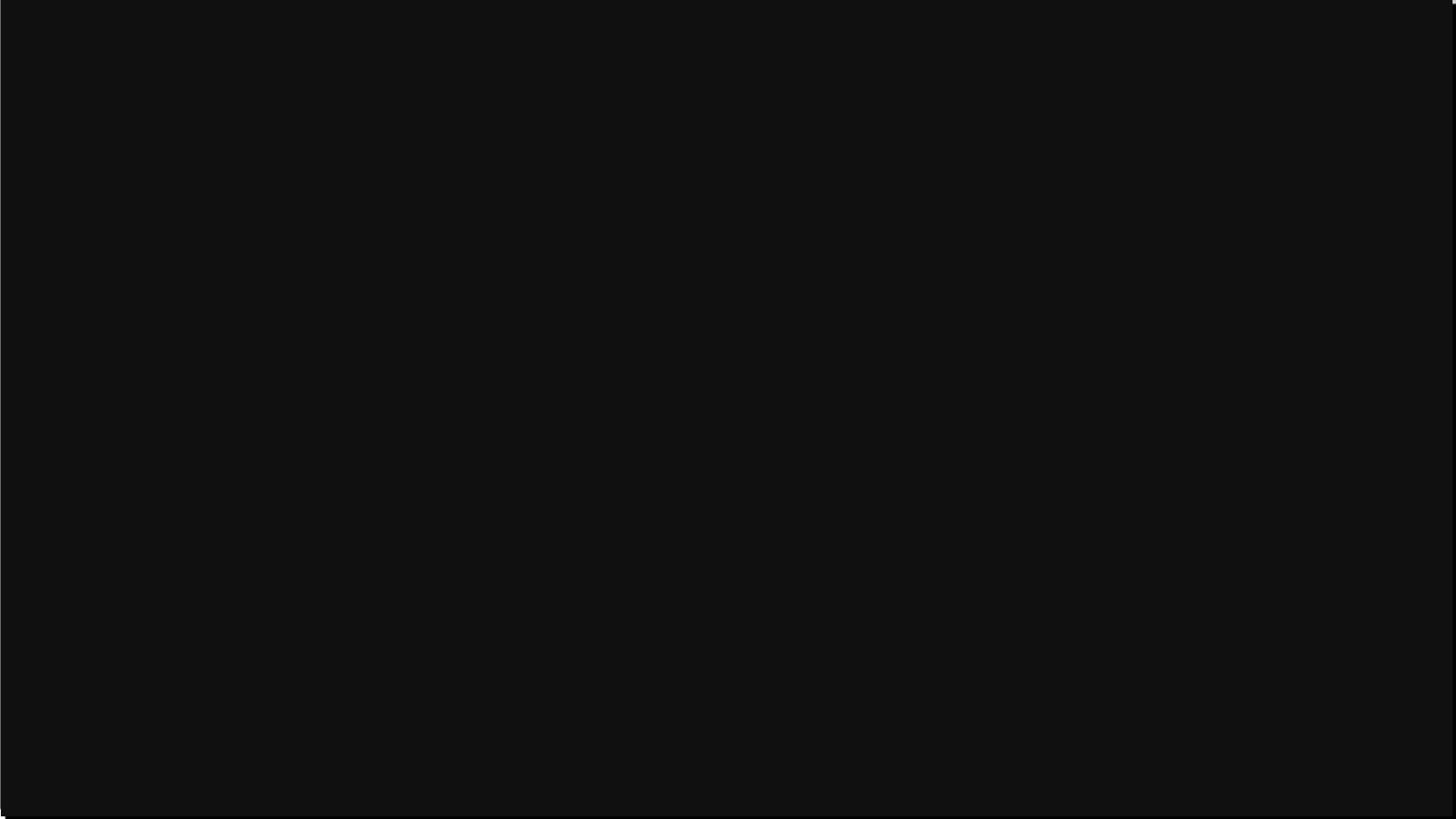
Look Behind You

LOOK FOR A TRAIN



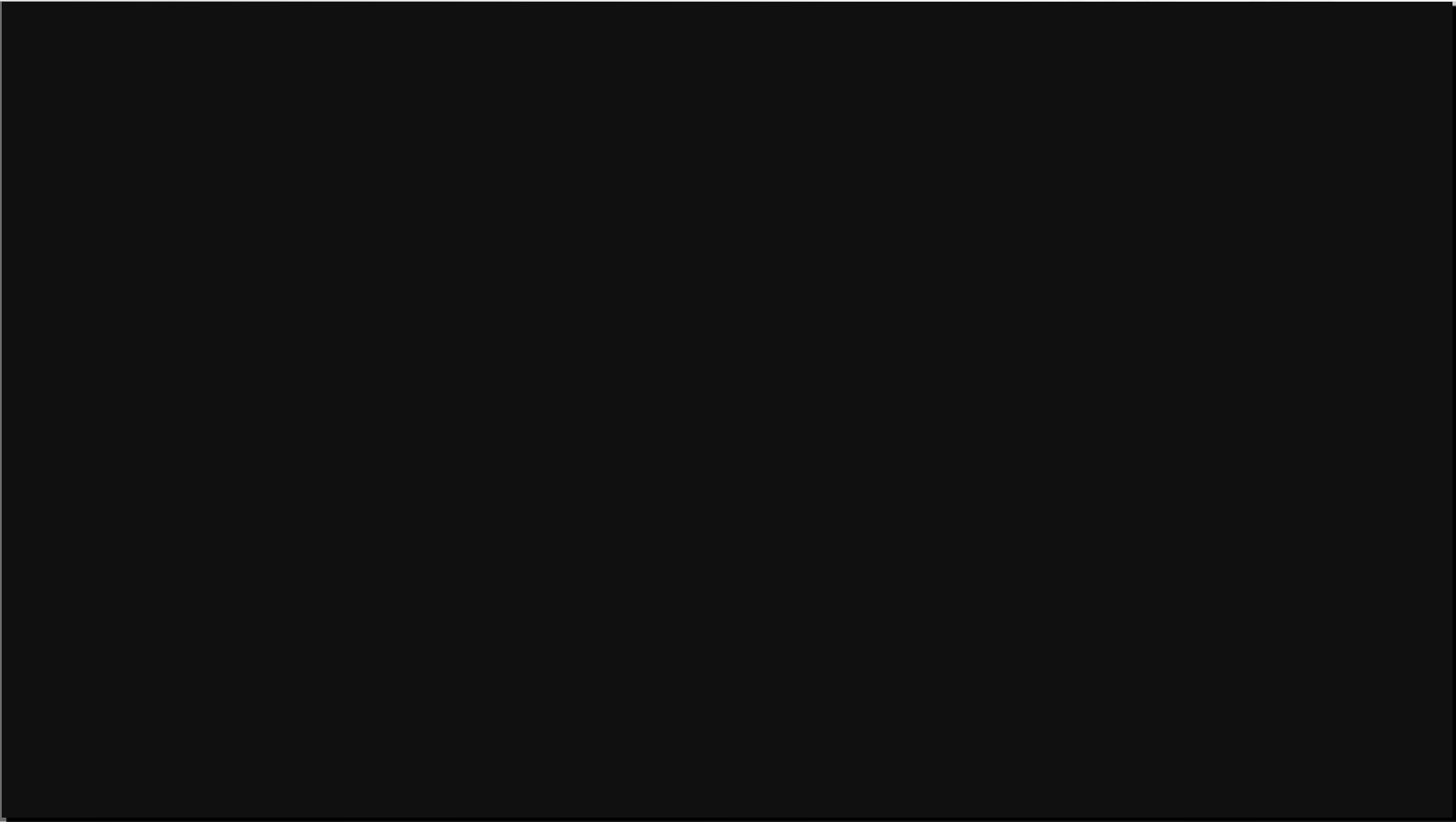
Distractions!

Is it Worth It?



Distractions!

Is it Worth It?



Distractions – Listen for a Train



Cell phone usage banned

Cities

Hands free device OK!

Billings

Butte

Helena

Missoula

Whitefish

Columbia Falls

Hamilton

Great Falls

Bozeman

Silver Bow

Statistics

2008 = 6000 fatalities

500000 Injuries

All due to distracted driving

Speed Perception



Most Important Rule at a Crossing

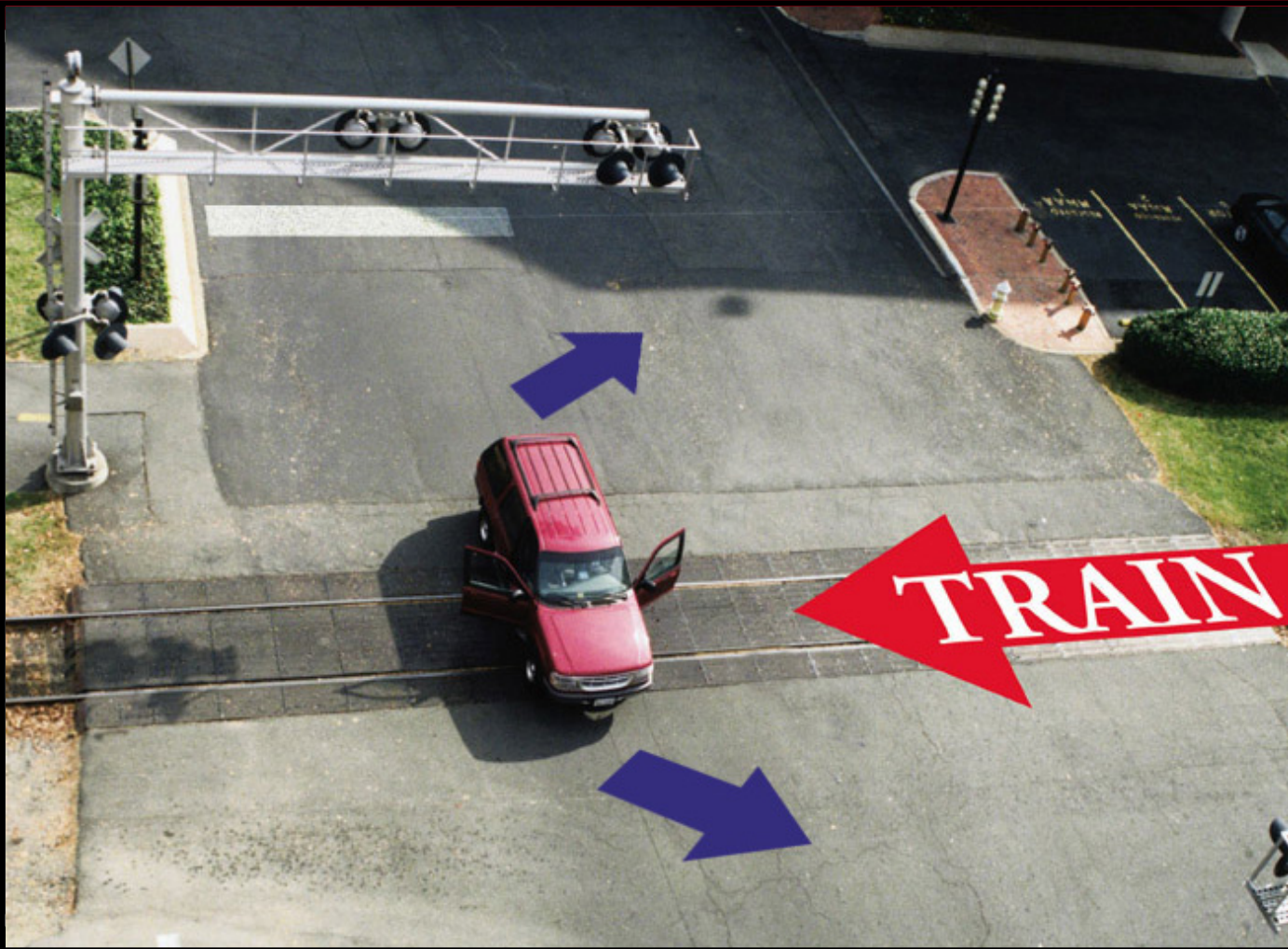






Don't, Stop, Pass, or Shift





Did He Make It?



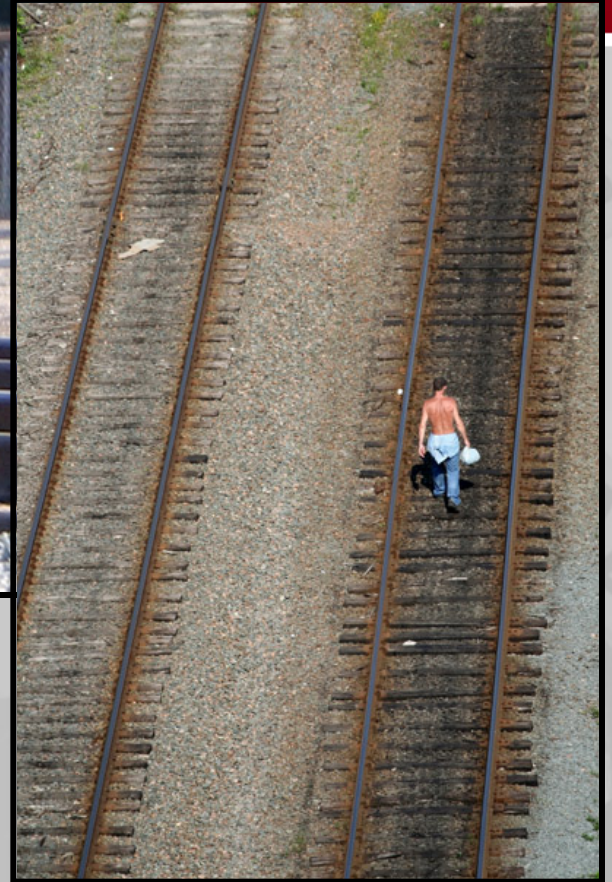
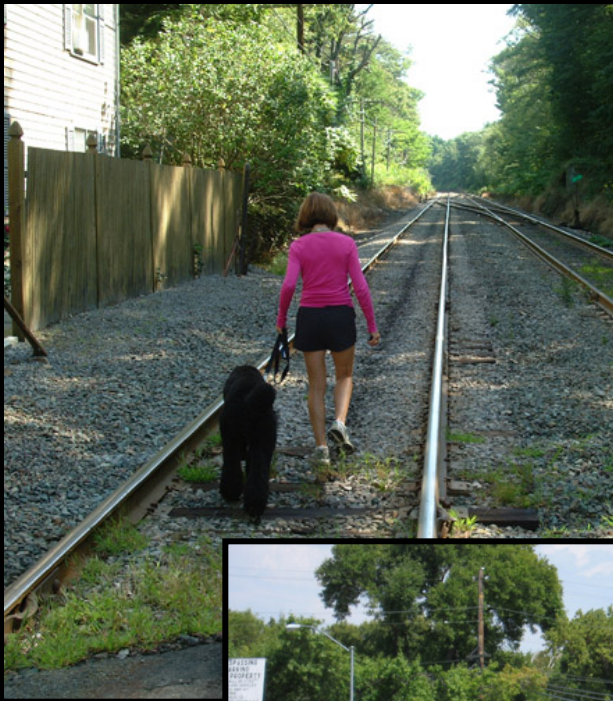
**TRESPASSING IS
DANGEROUS
AND ILLEGAL**



**STAY OFF
RAILROAD TRACKS**







**TRESPASSING IS
DANGEROUS
AND ILLEGAL**



**STAY OFF
RAILROAD TRACKS**

Stay Off!

Stay Away!

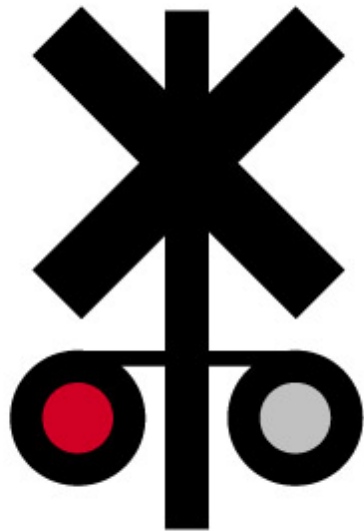
Stay Alive!

ANY QUESTION?



**LOOK,
LISTEN &
LIVE**

**RAIL CROSSING
CROSSROAD**



**OPERATION
LIFESAVER[®]**

Look, Listen & Live