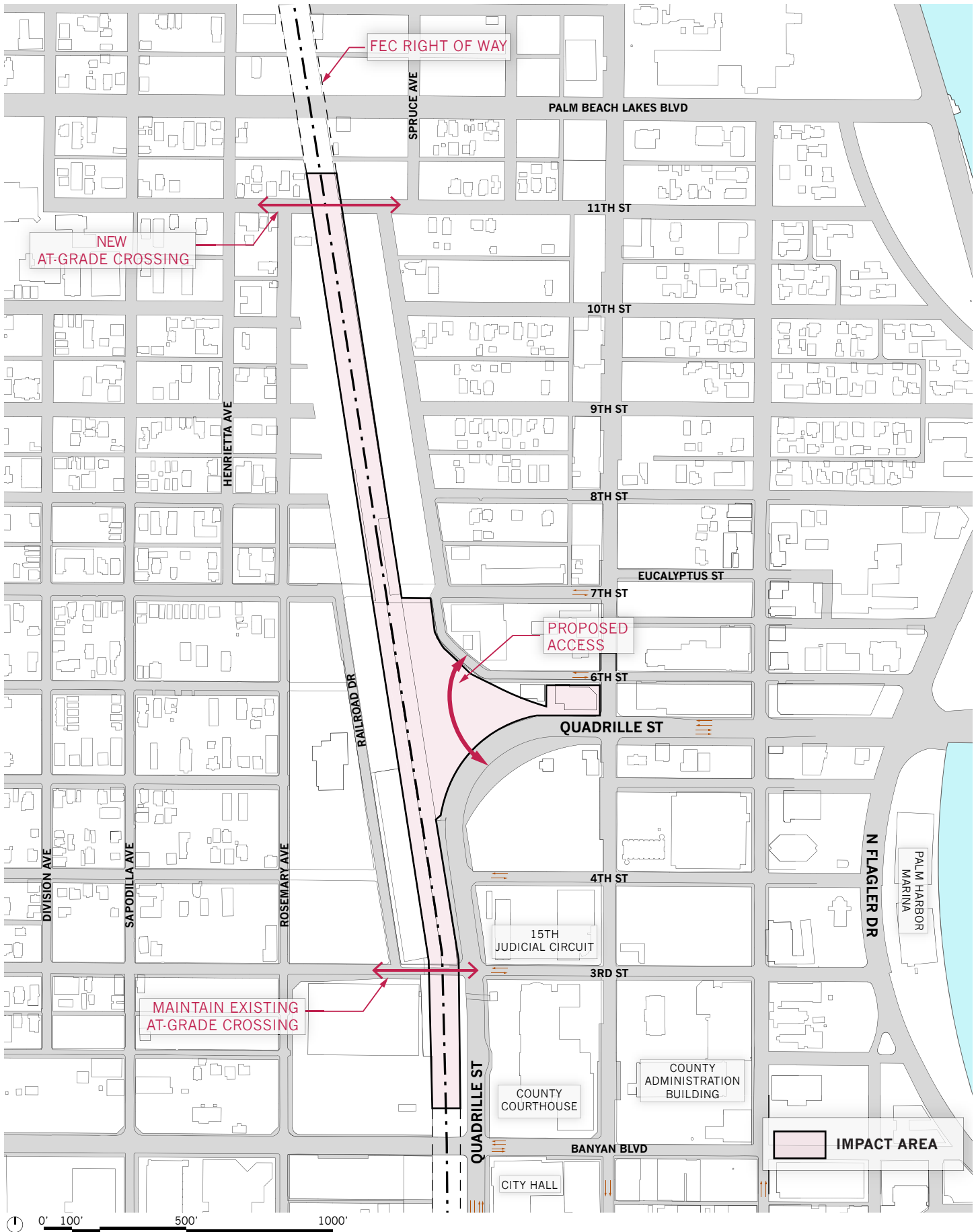
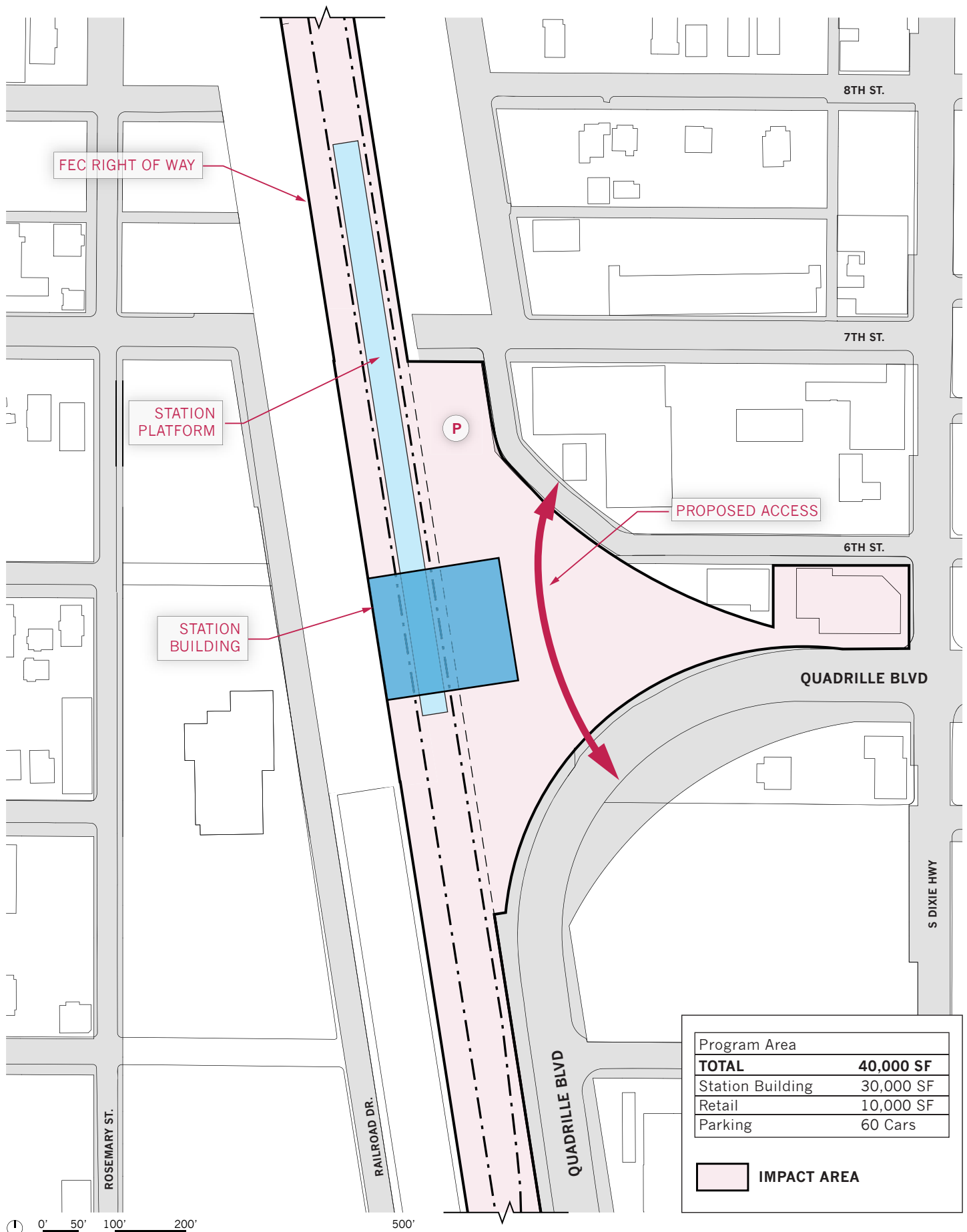
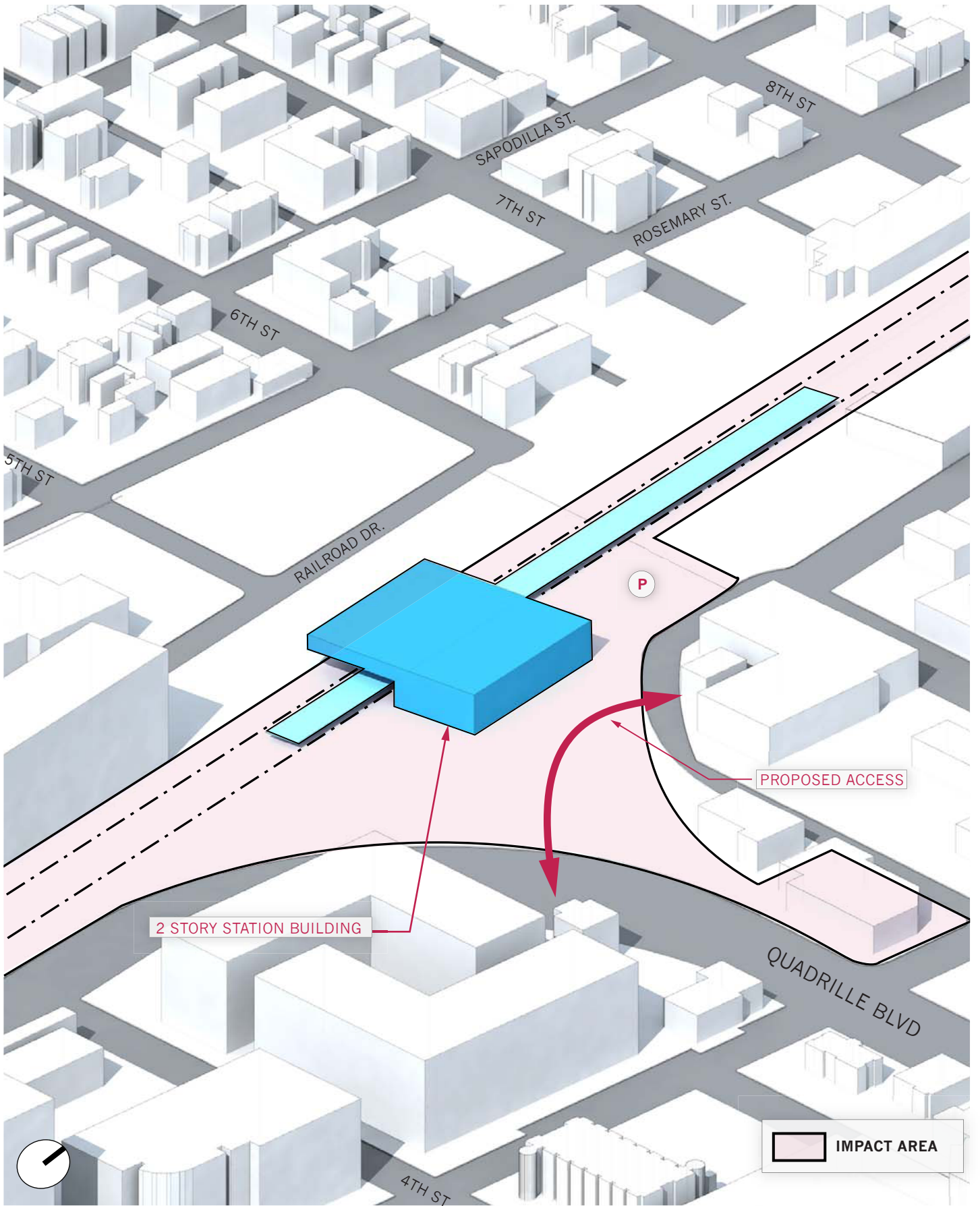


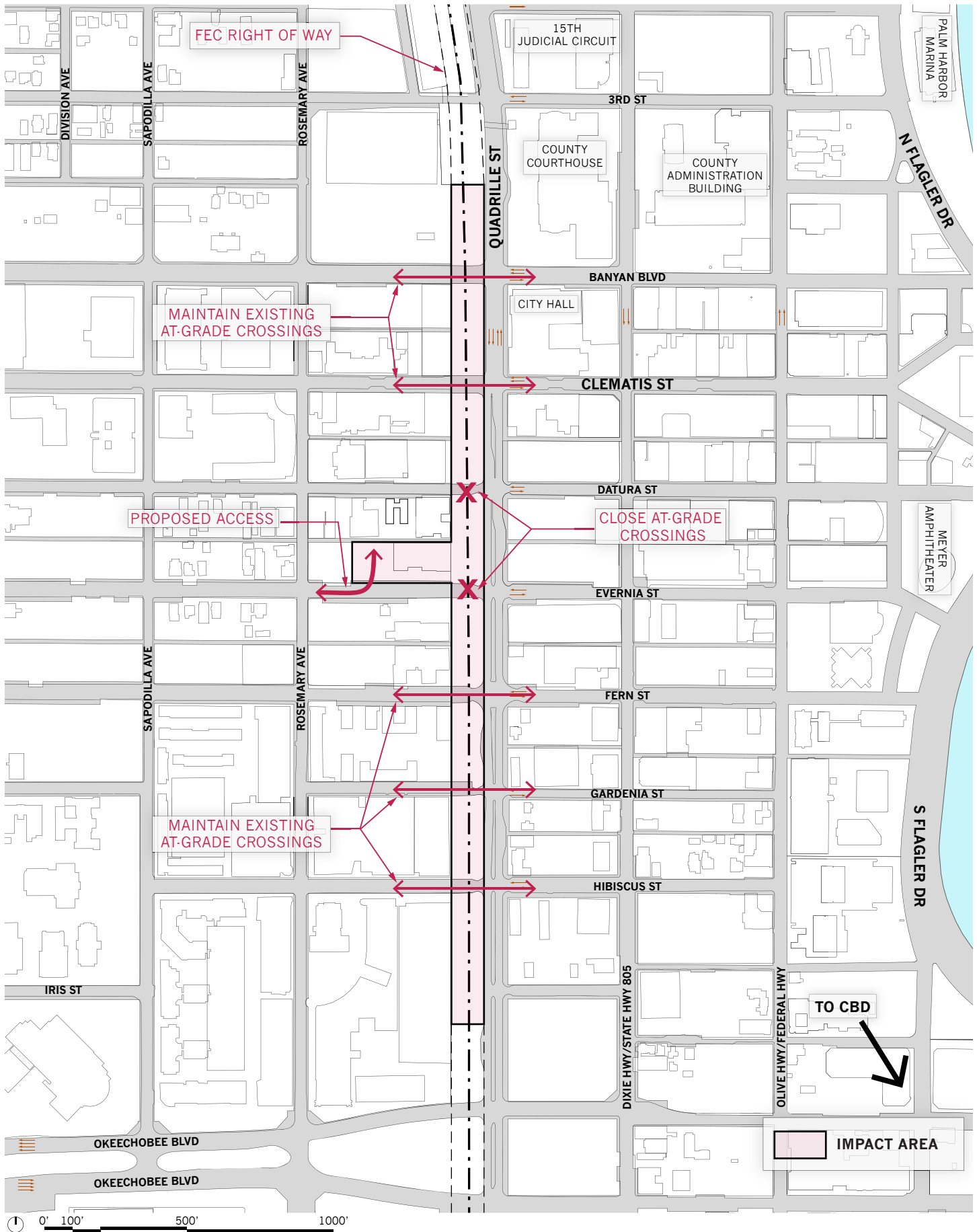
ALL ABOARD FLORIDA
ENVIRONMENTAL ASSESSMENT
SITE DIAGRAMS

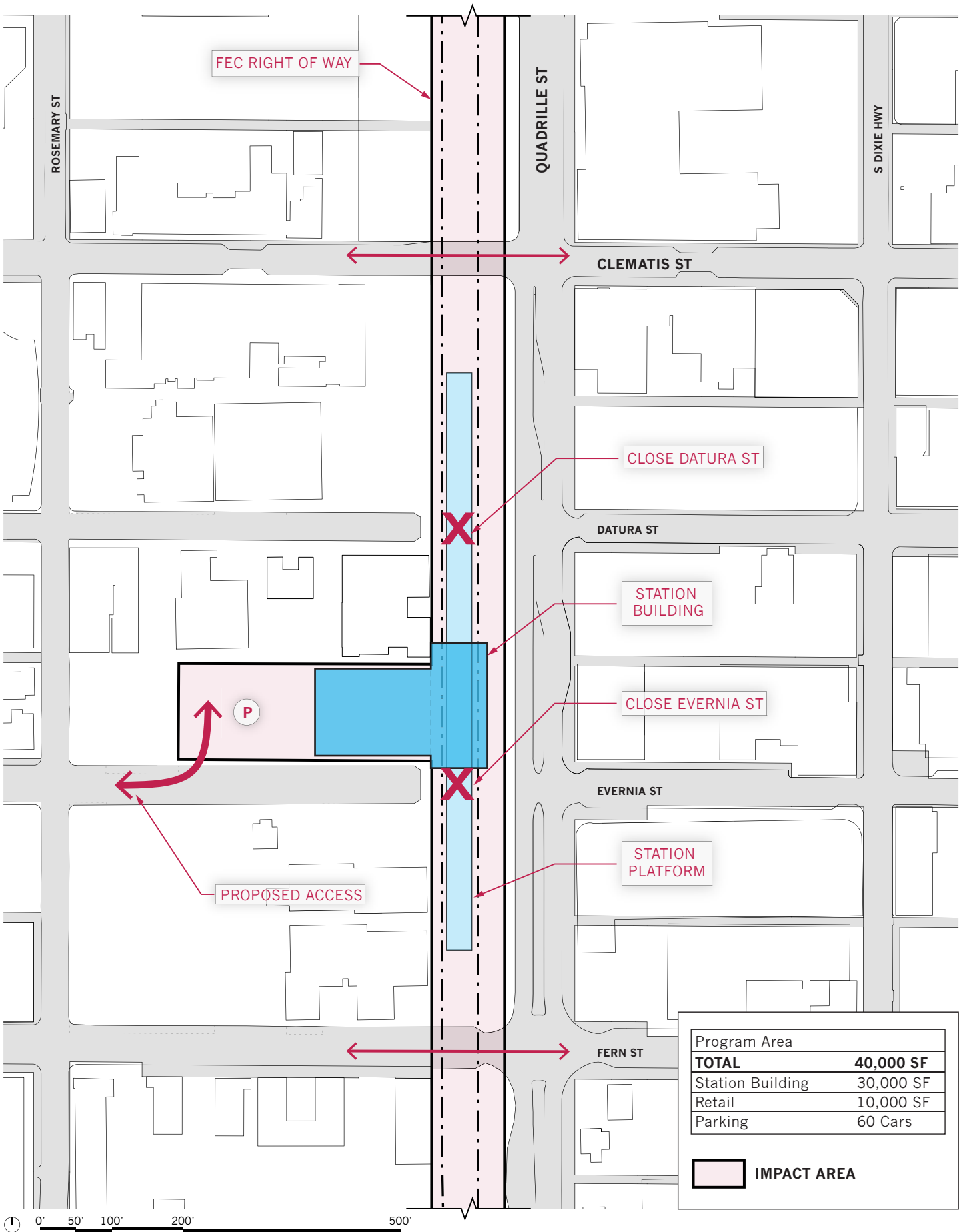
SOM
SEPTEMBER 17, 2012

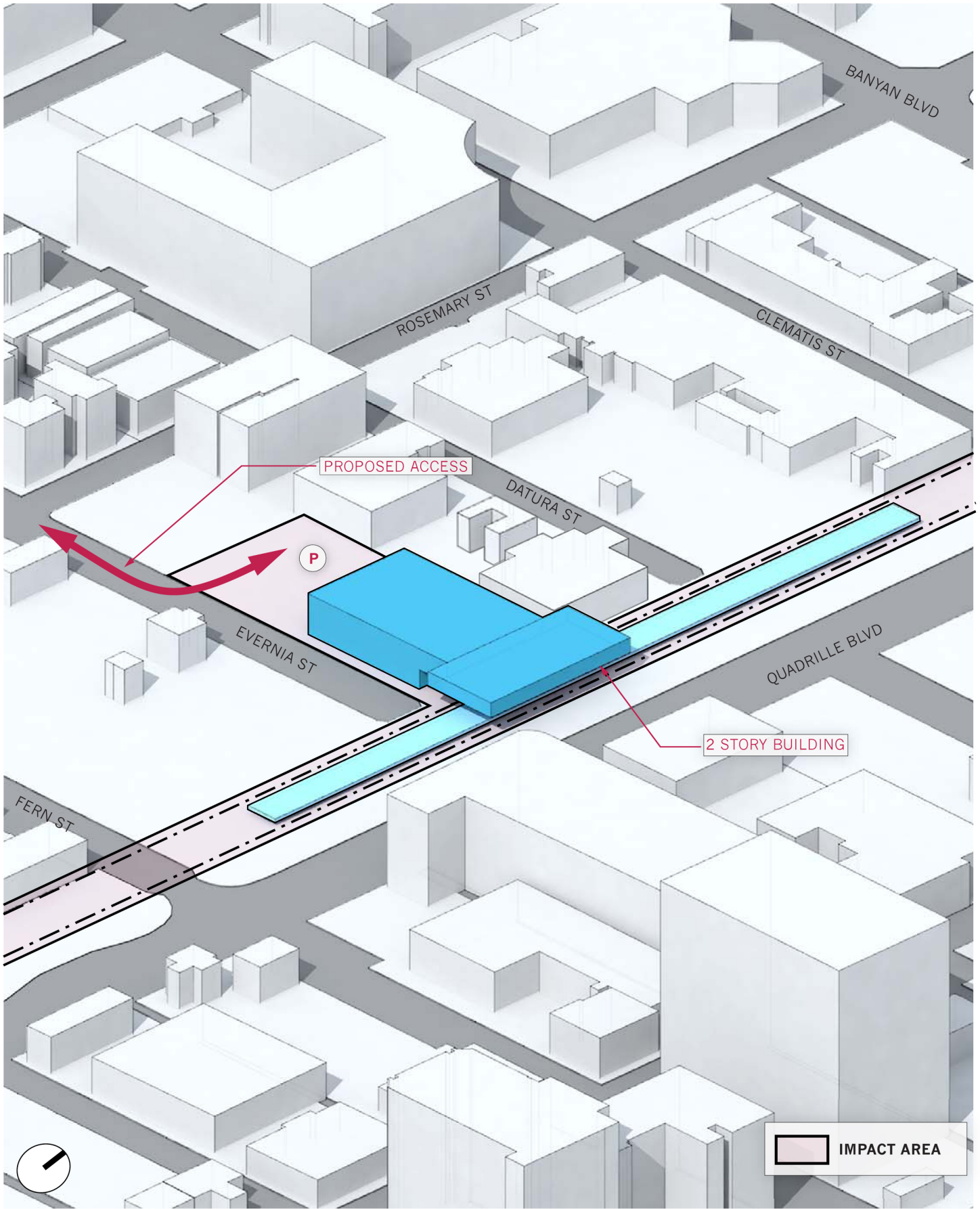


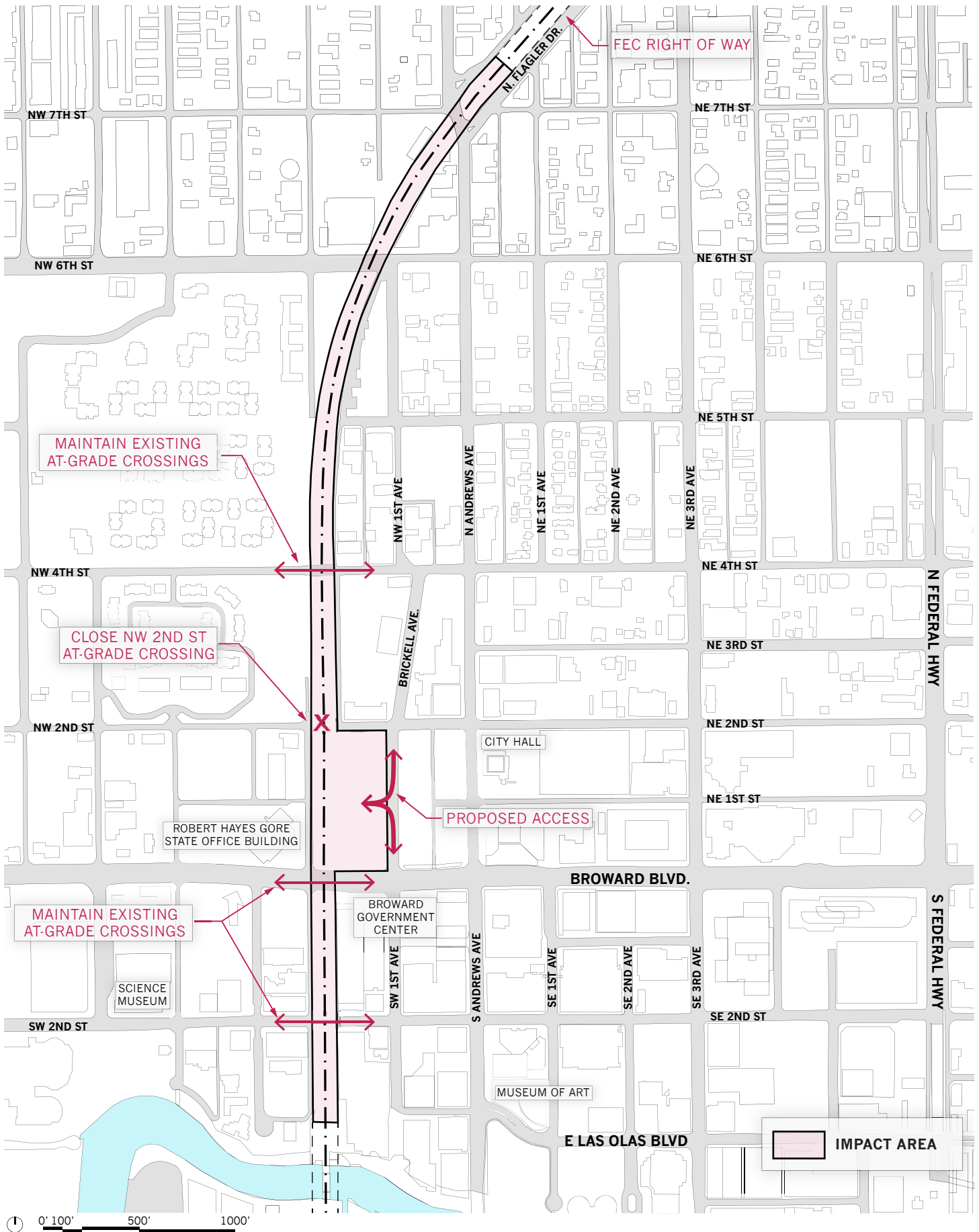


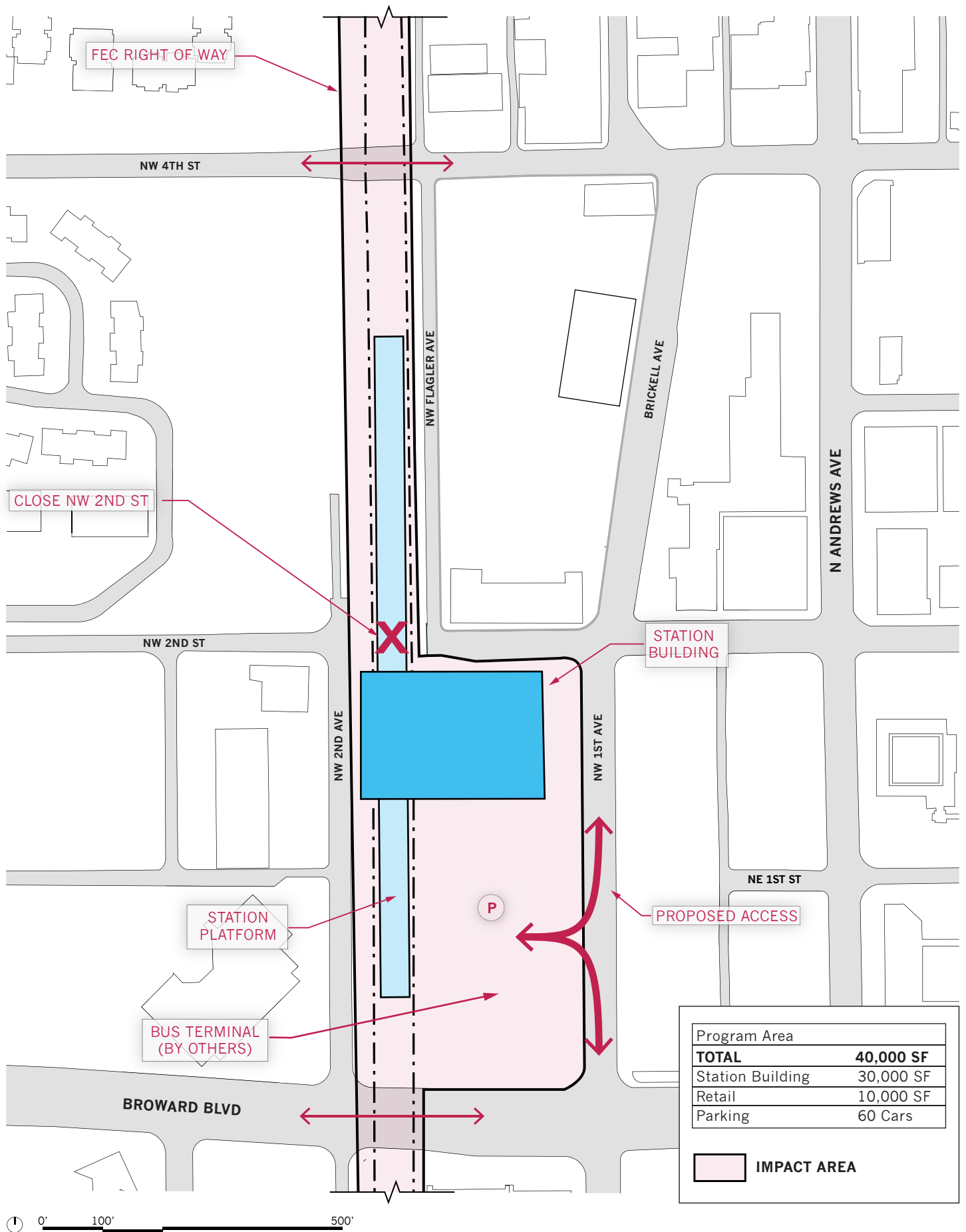


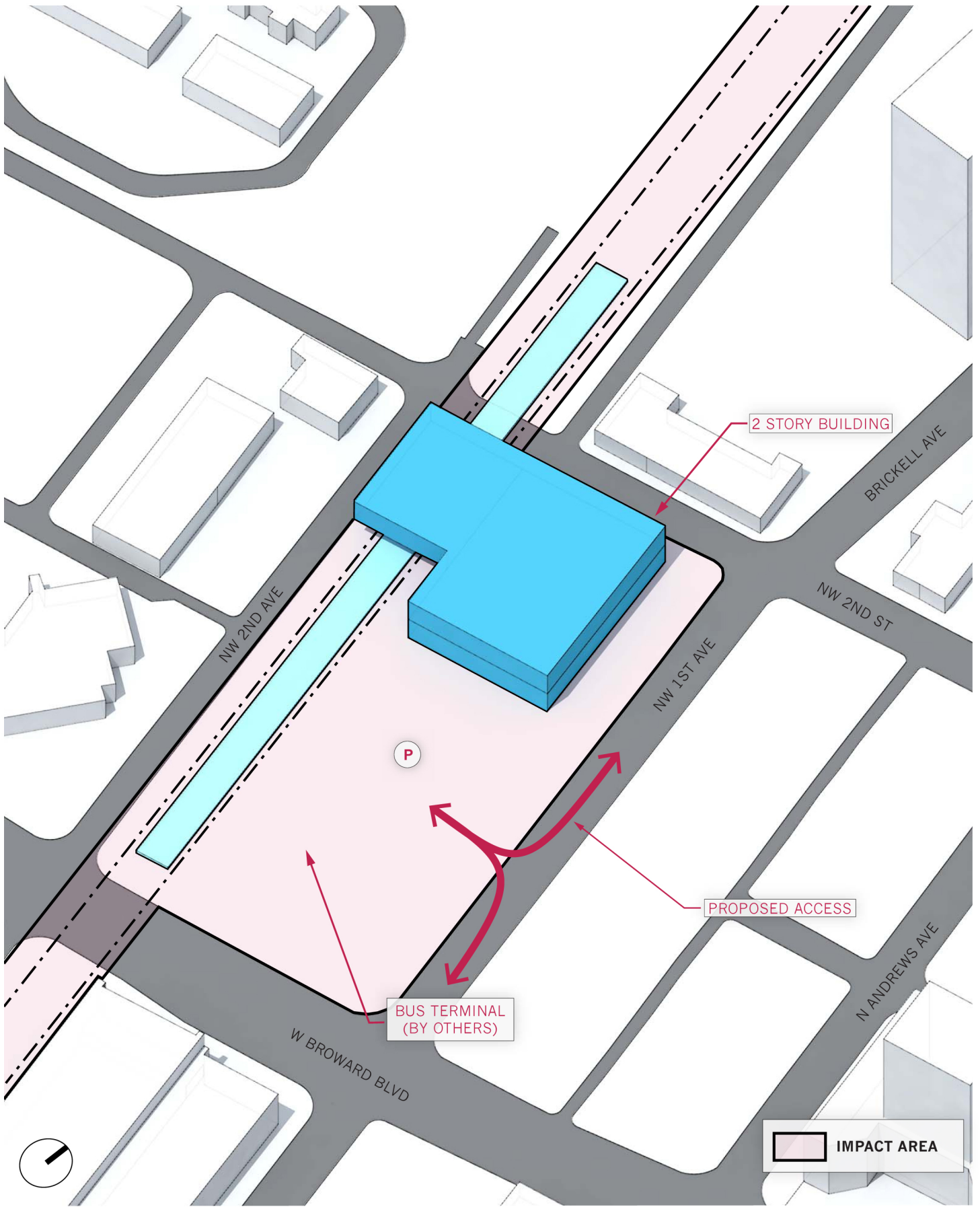


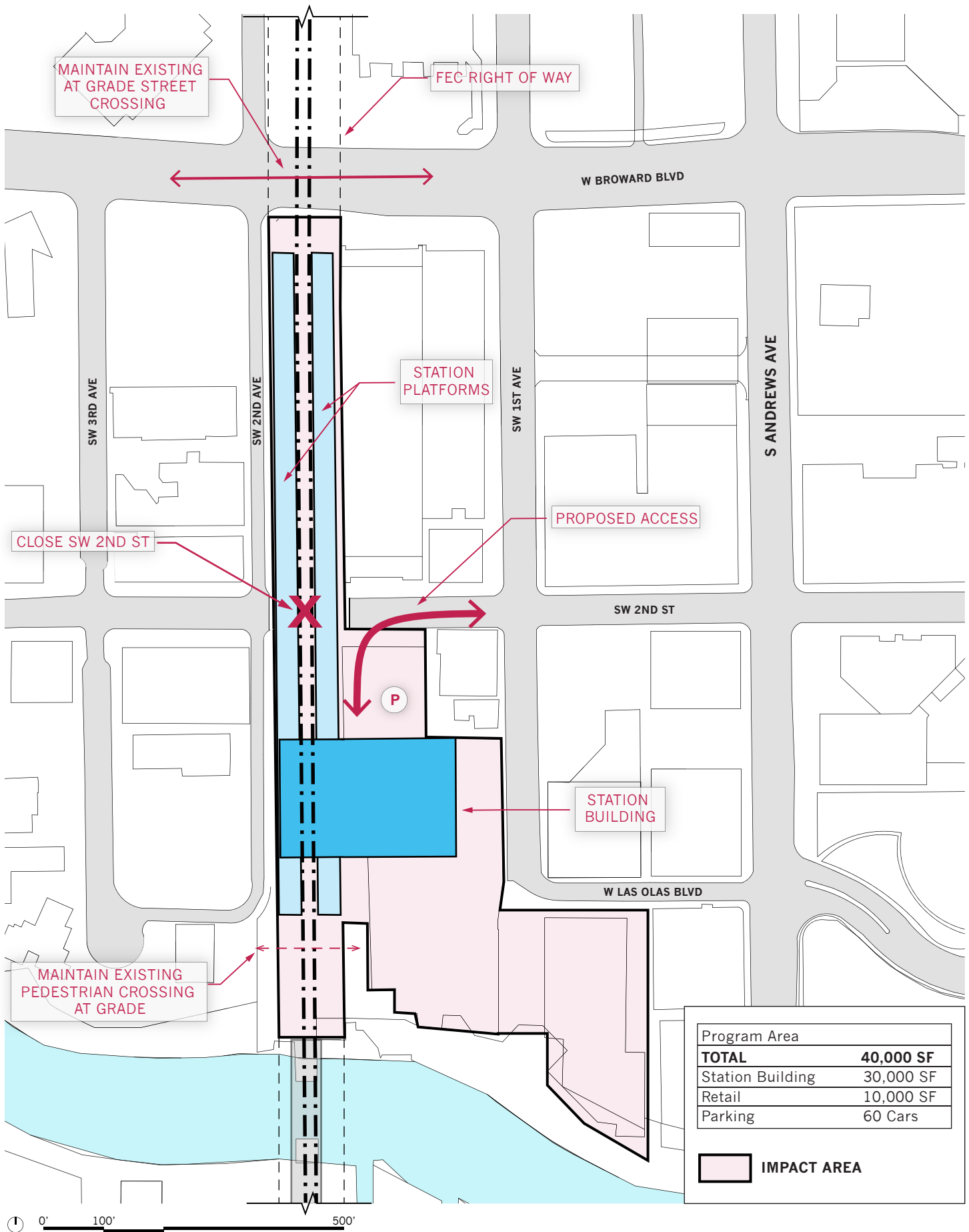






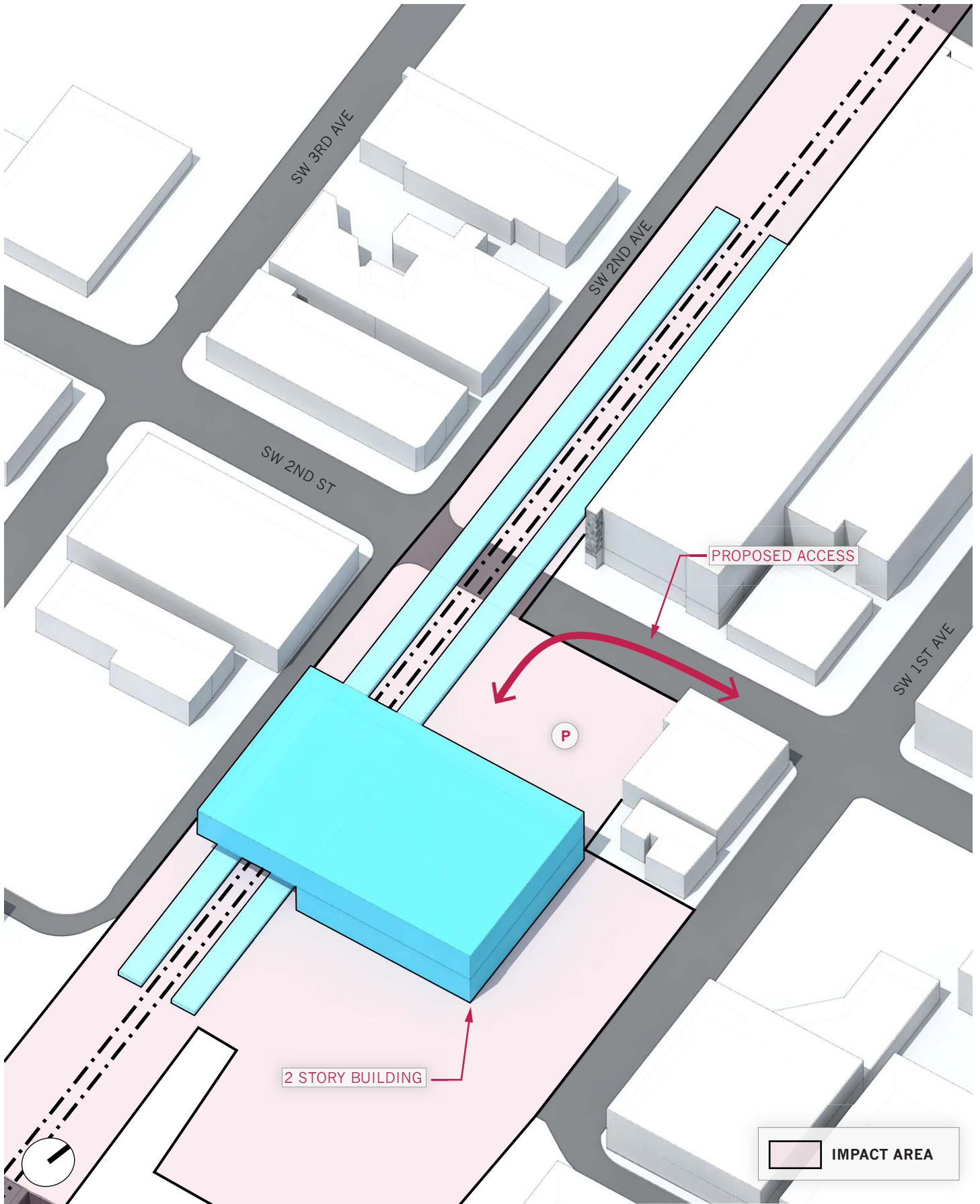


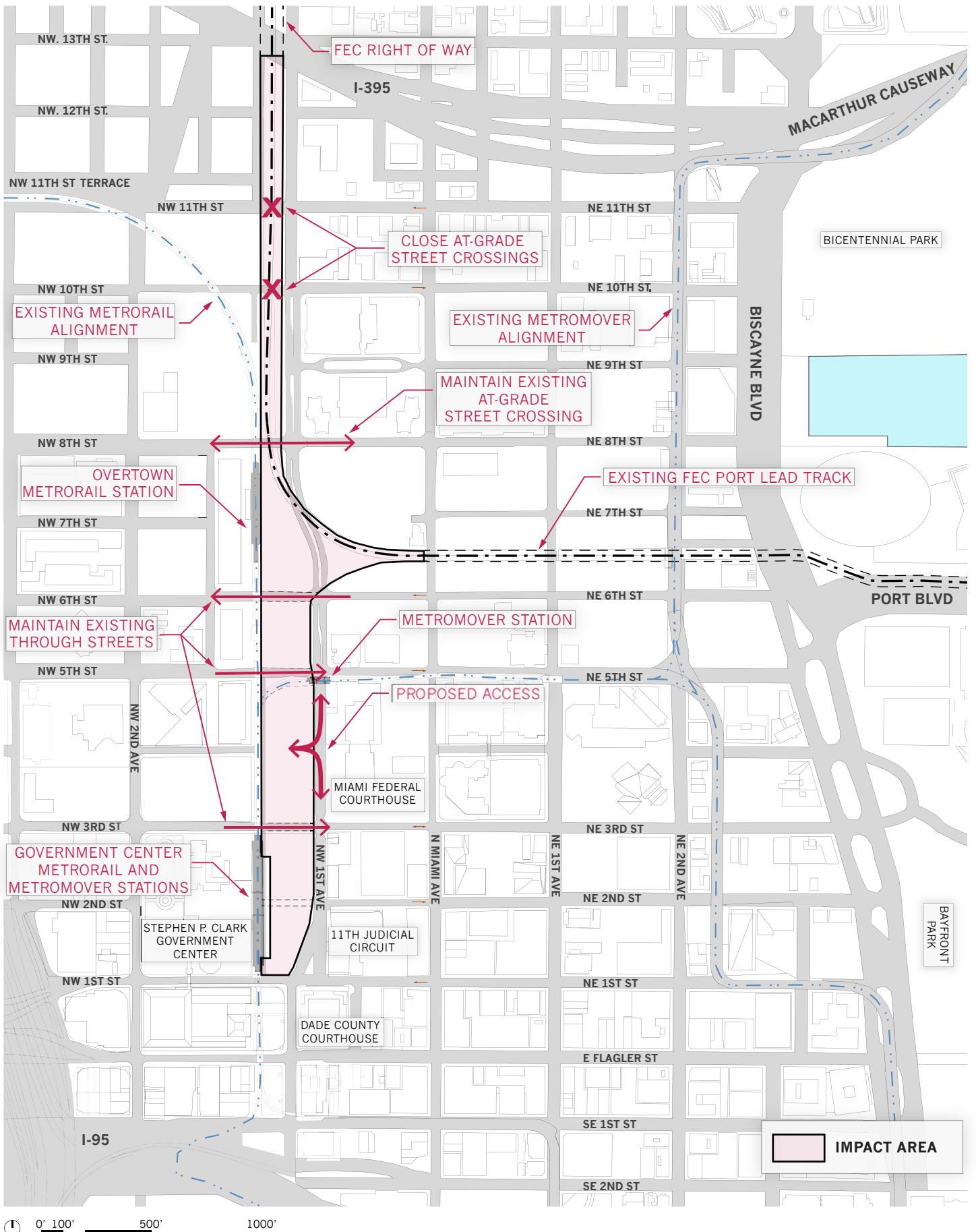


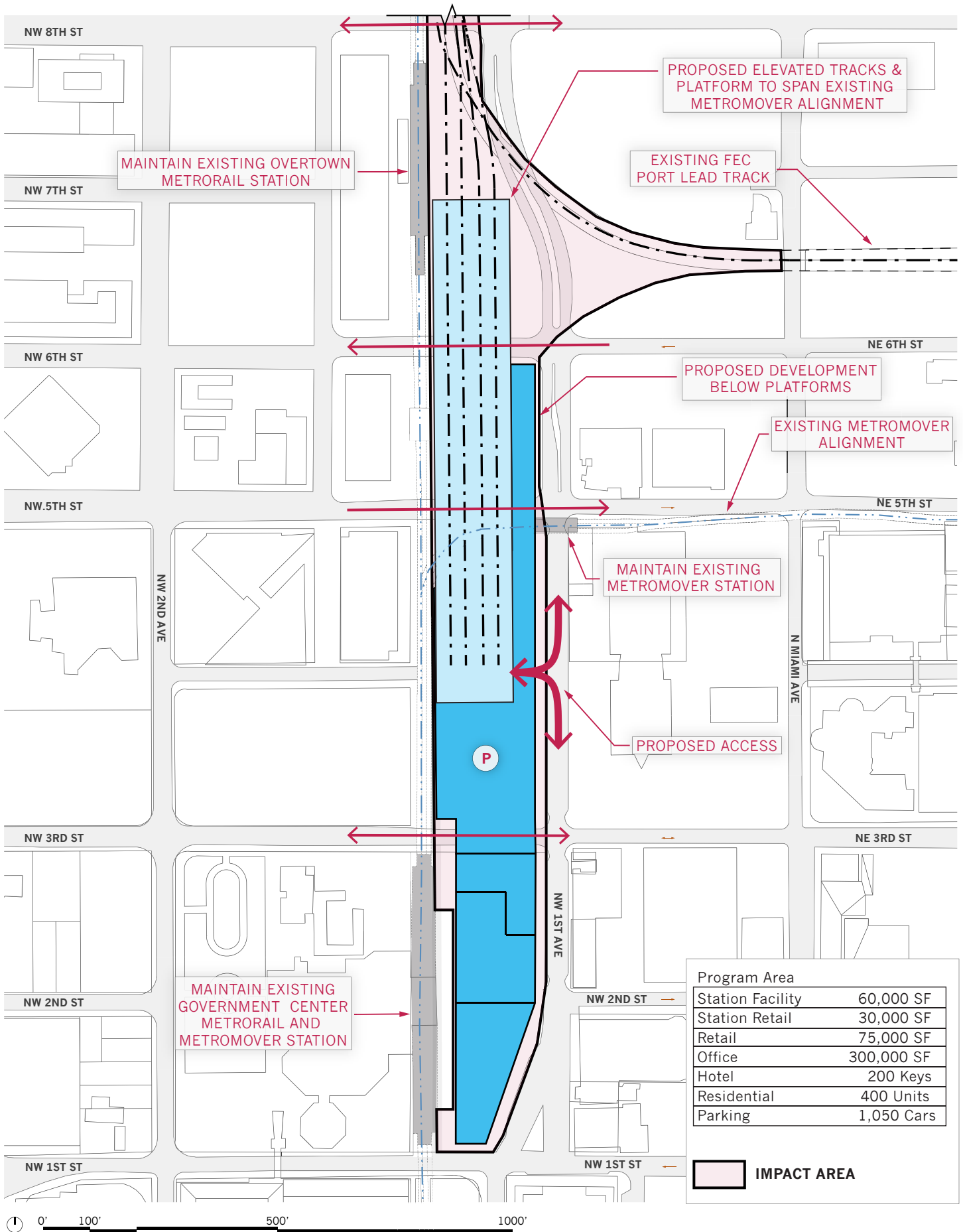


Program Area	
TOTAL	40,000 SF
Station Building	30,000 SF
Retail	10,000 SF
Parking	60 Cars

IMPACT AREA







PROPOSED ELEVATED TRACKS & PLATFORM TO SPAN EXISTING METROMOVER ALIGNMENT

MAINTAIN EXISTING OVERTOWN METRORAIL STATION

EXISTING FEC PORT LEAD TRACK

PROPOSED DEVELOPMENT BELOW PLATFORMS

EXISTING METROMOVER ALIGNMENT

MAINTAIN EXISTING METROMOVER STATION

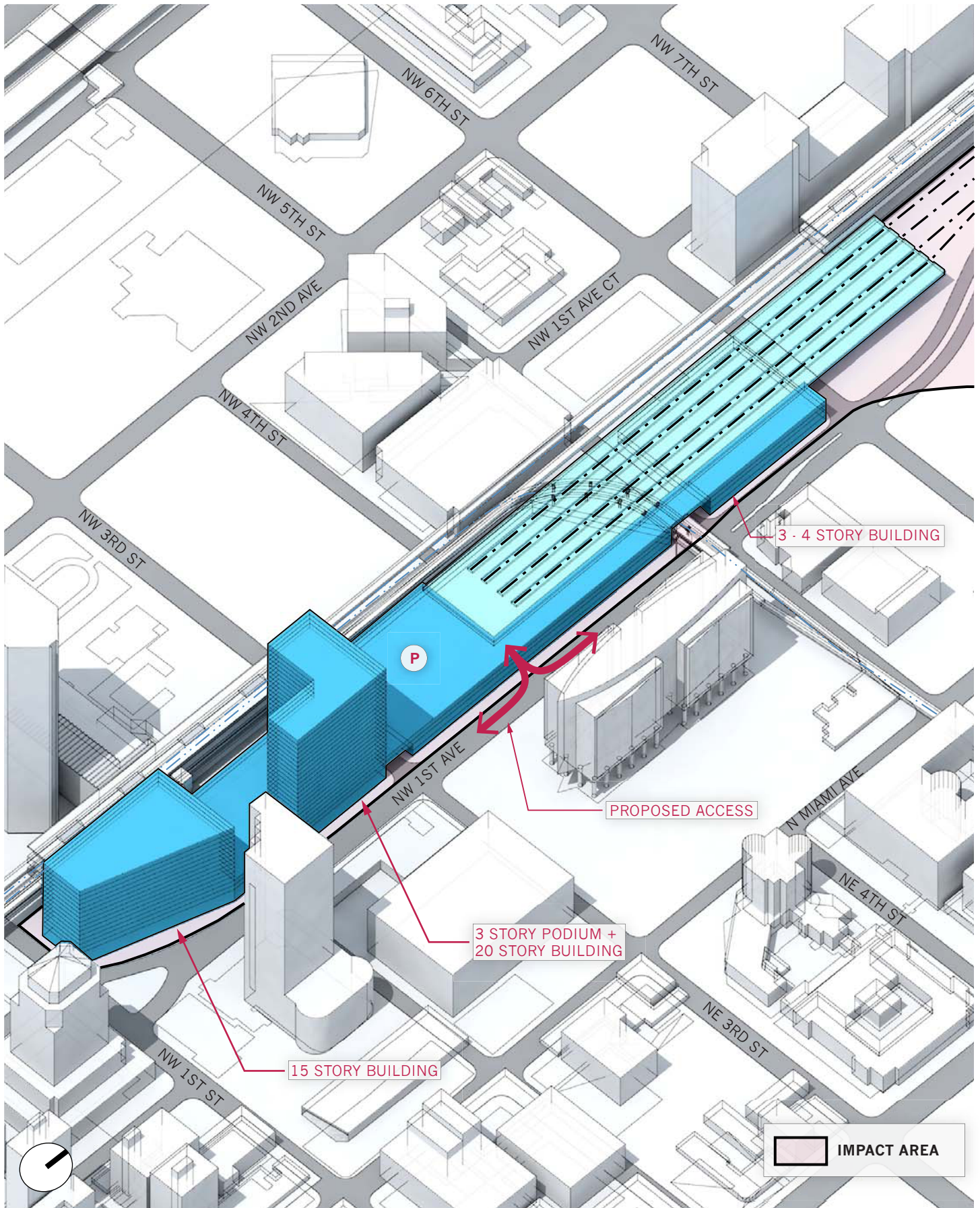
PROPOSED ACCESS

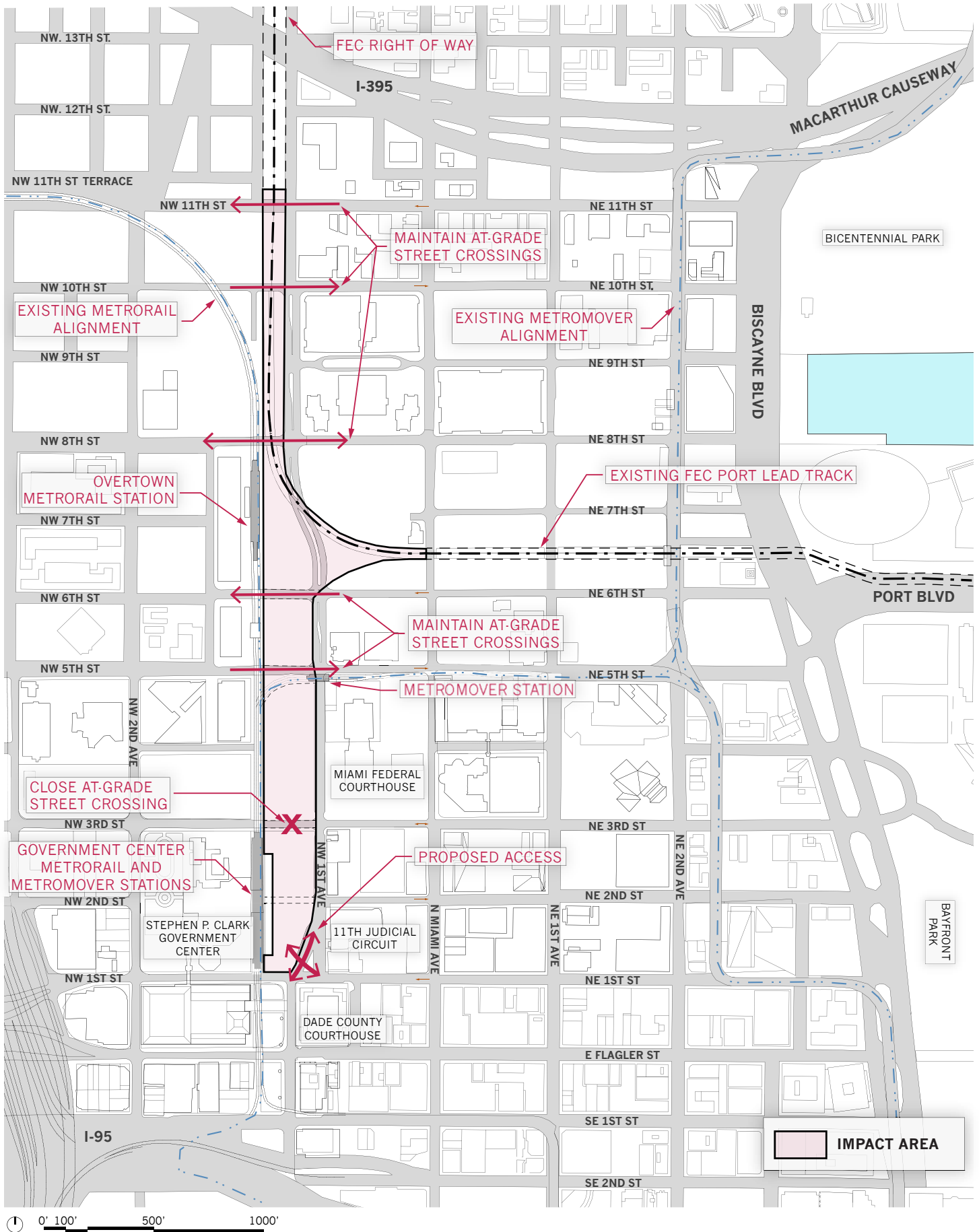
MAINTAIN EXISTING GOVERNMENT CENTER METRORAIL AND METROMOVER STATION

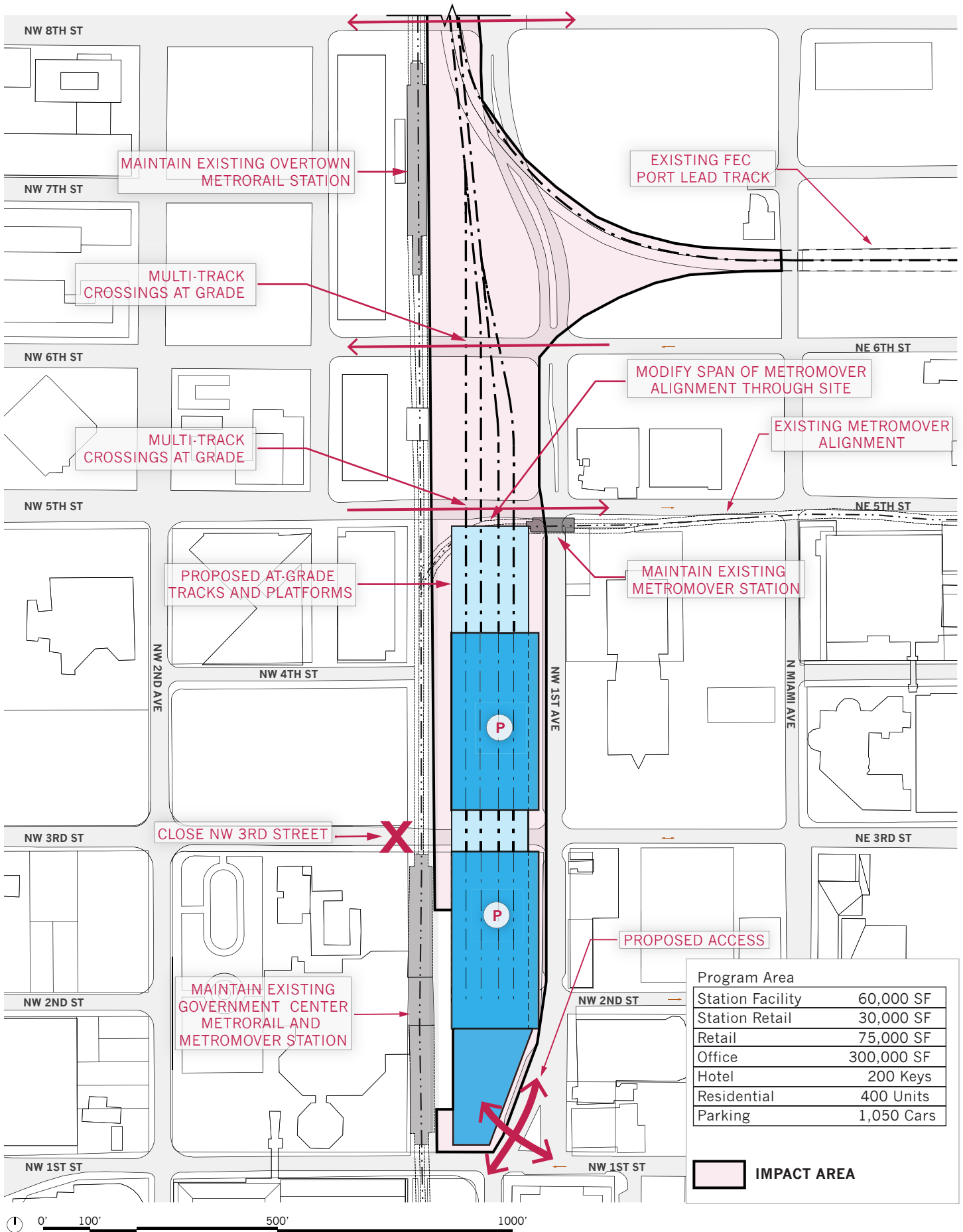
Program Area	
Station Facility	60,000 SF
Station Retail	30,000 SF
Retail	75,000 SF
Office	300,000 SF
Hotel	200 Keys
Residential	400 Units
Parking	1,050 Cars

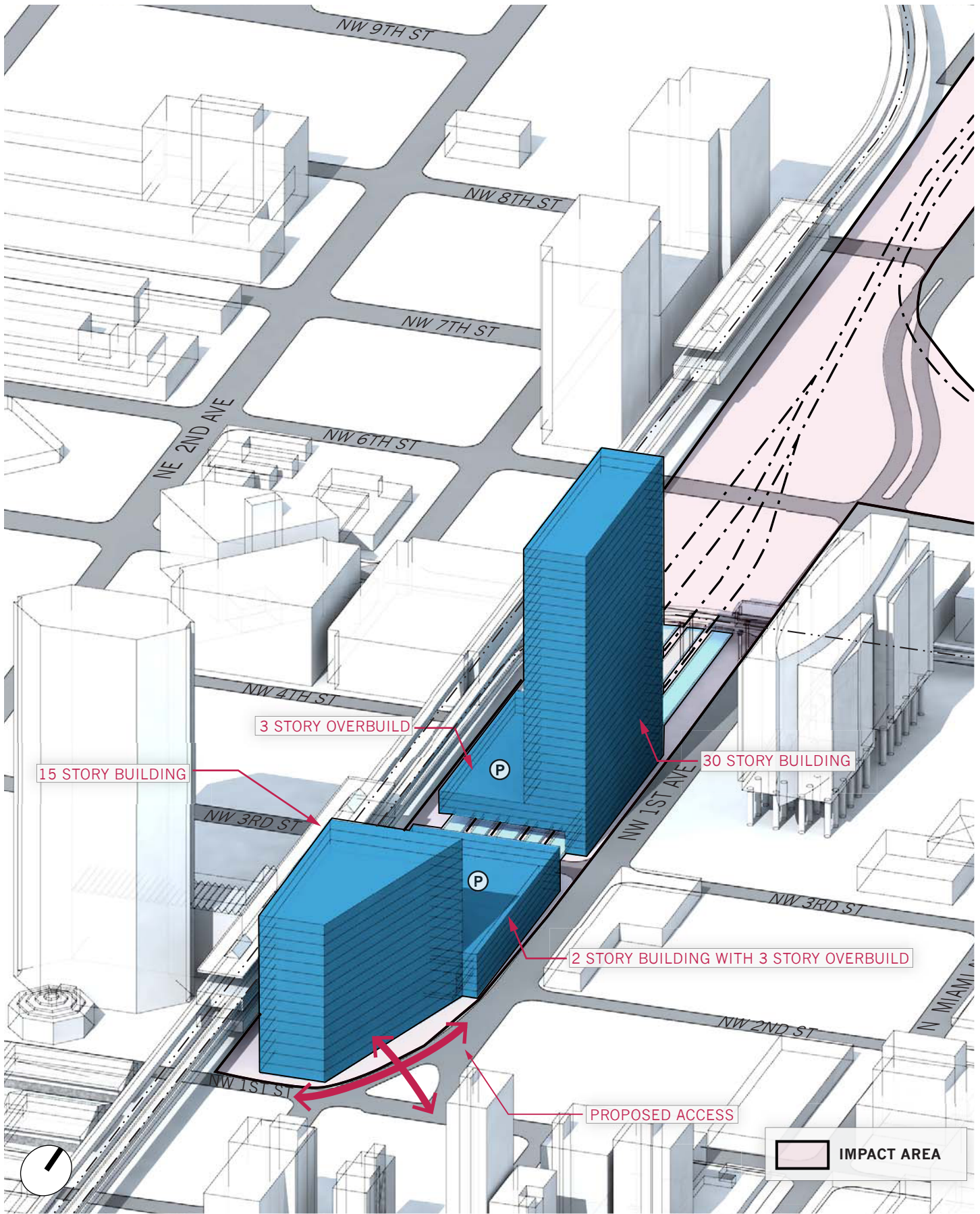
IMPACT AREA

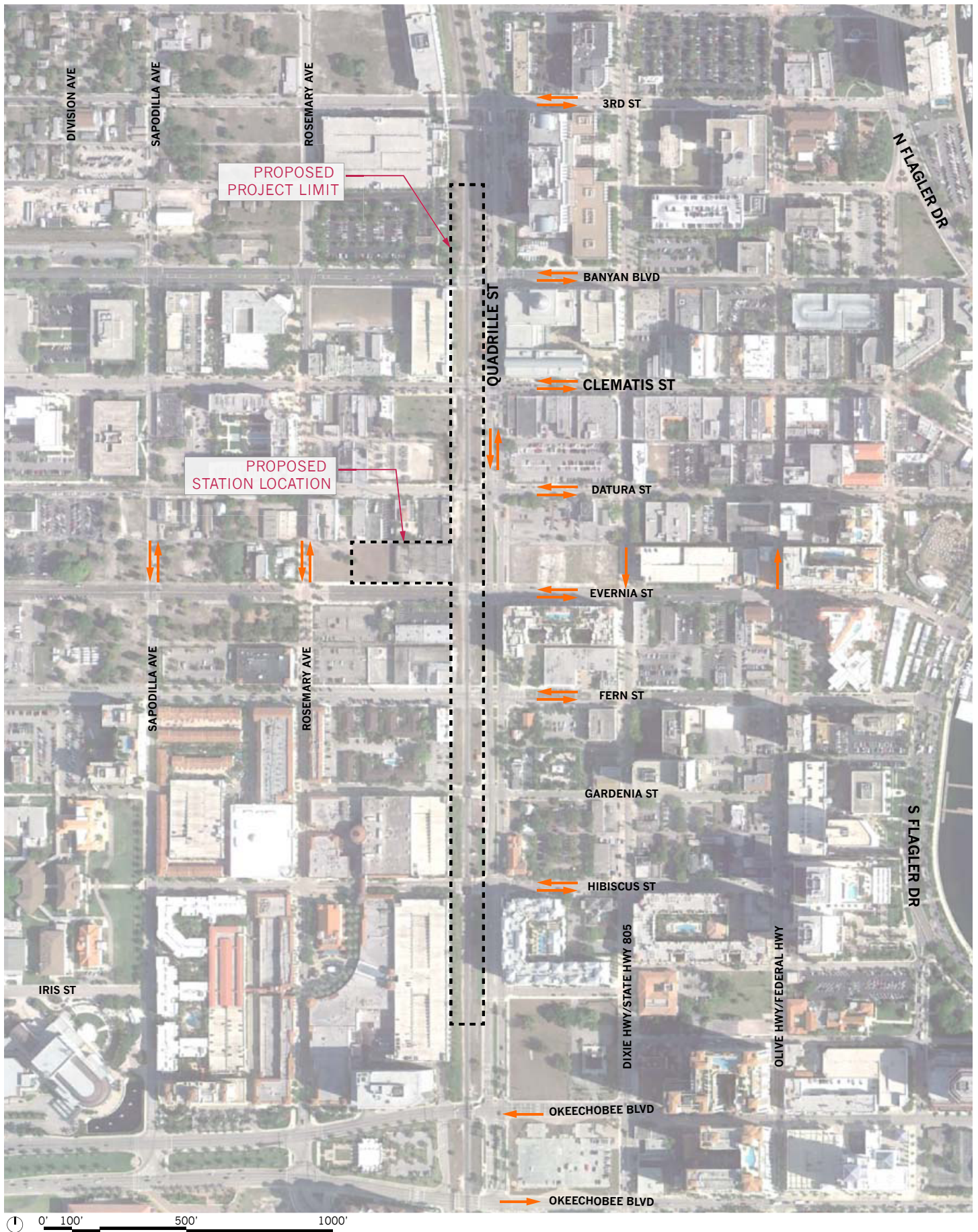


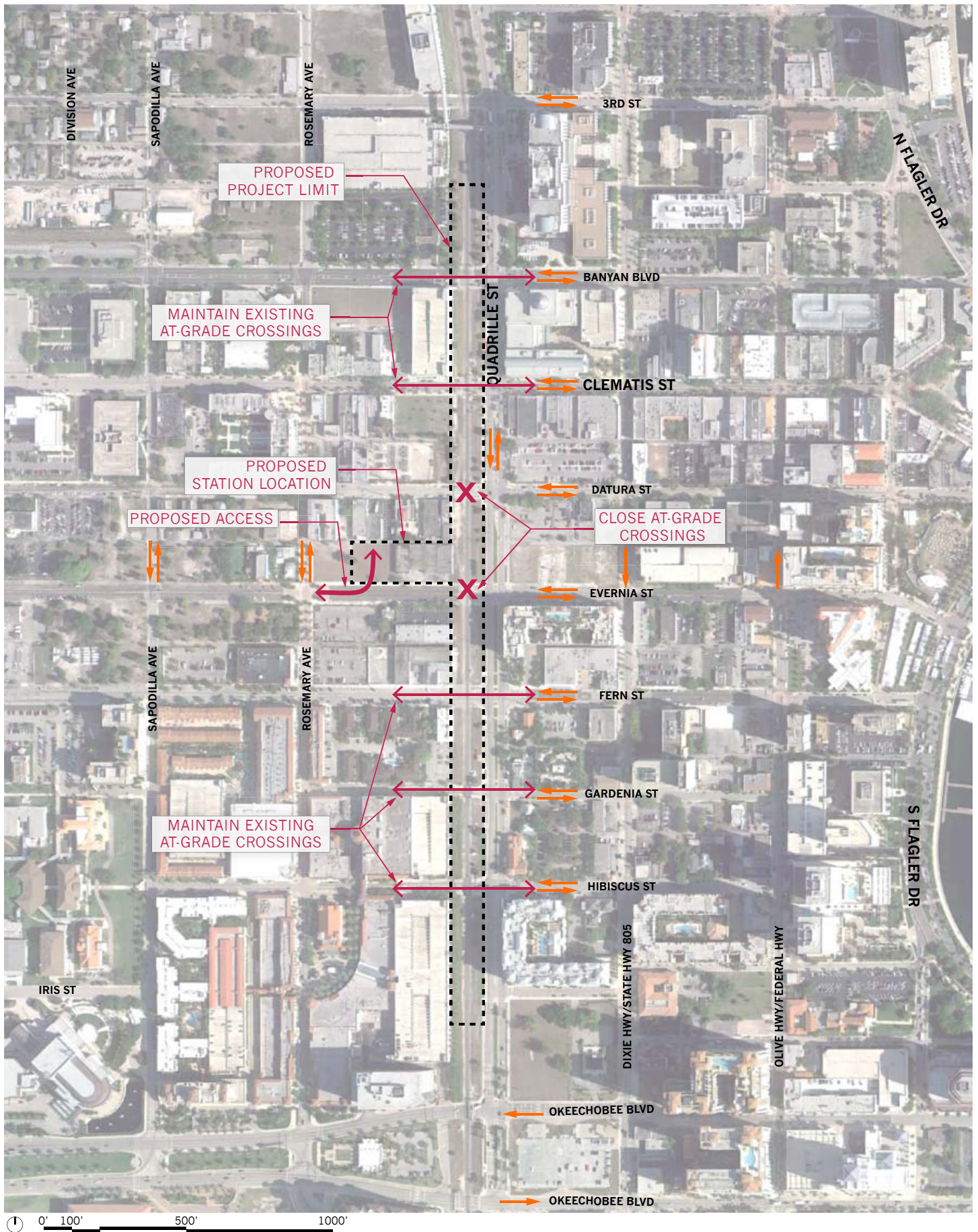




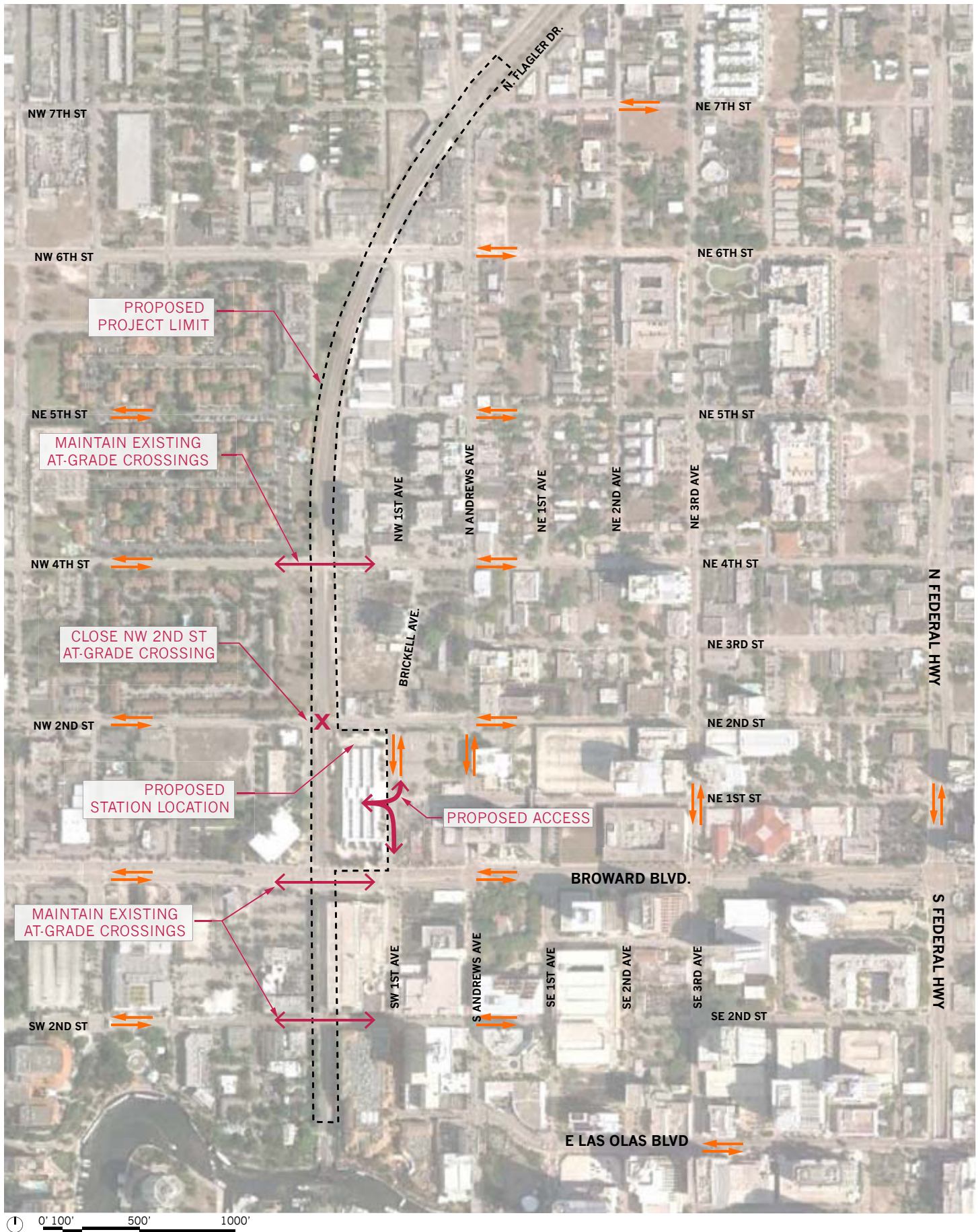


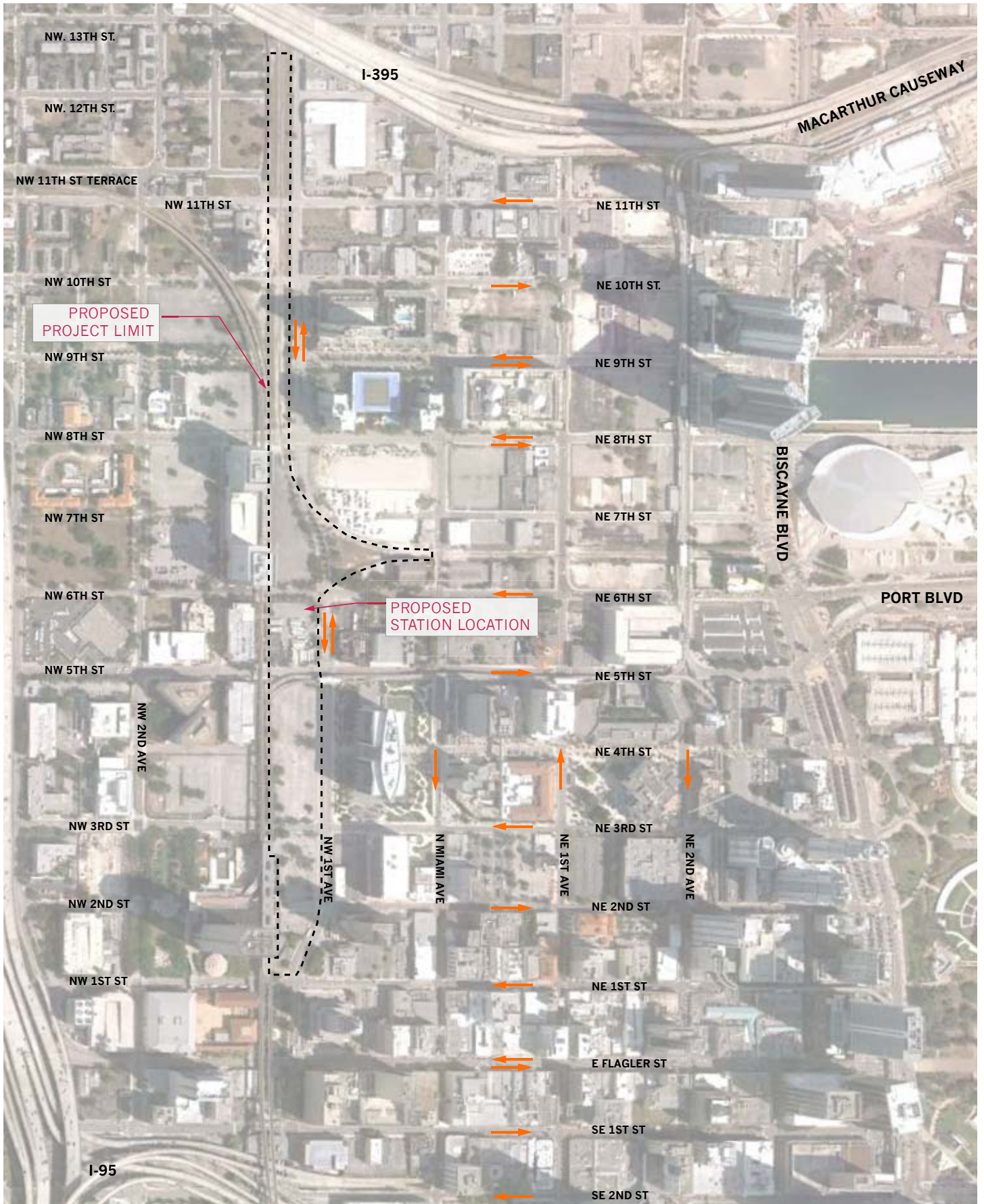








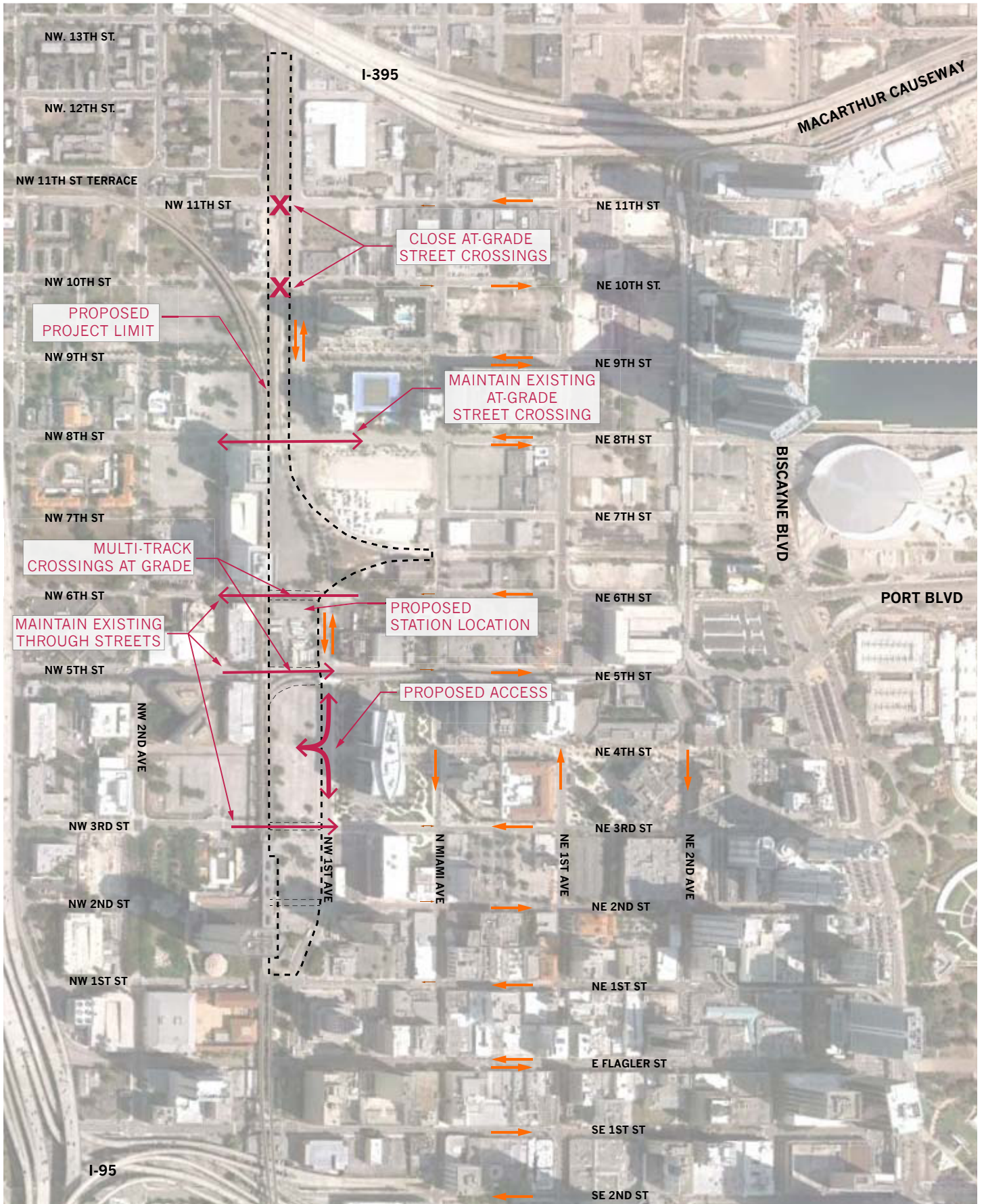




0' 100' 500' 1000'

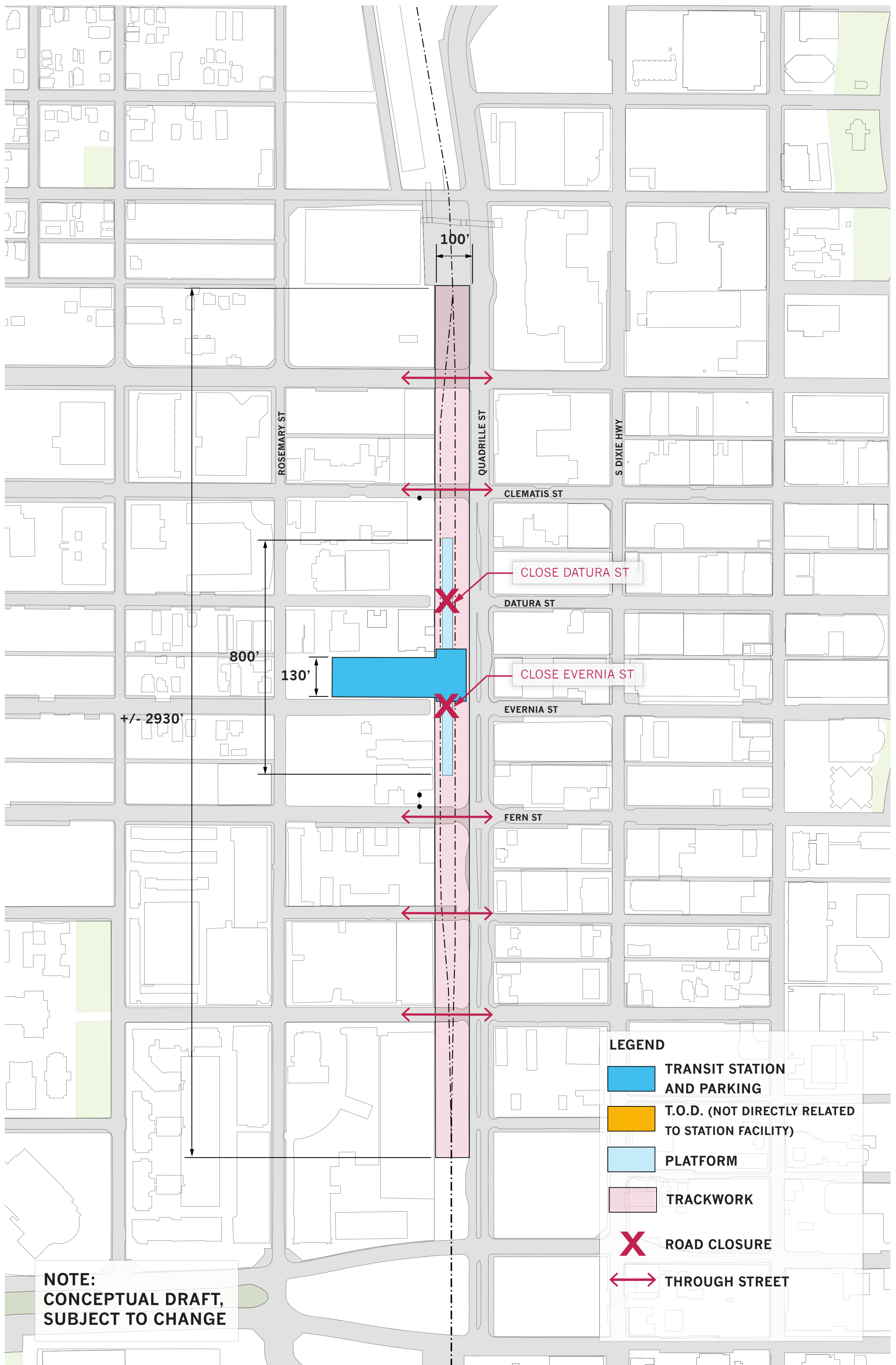
September 17, 2012

MIAMI - CENTRAL ELEVATED
EXISTING VEHICULAR CIRCULATION PATTERN



ALL ABOARD FLORIDA
SHPO DIAGRAMS

SOM
SEPTEMBER 17, 2012

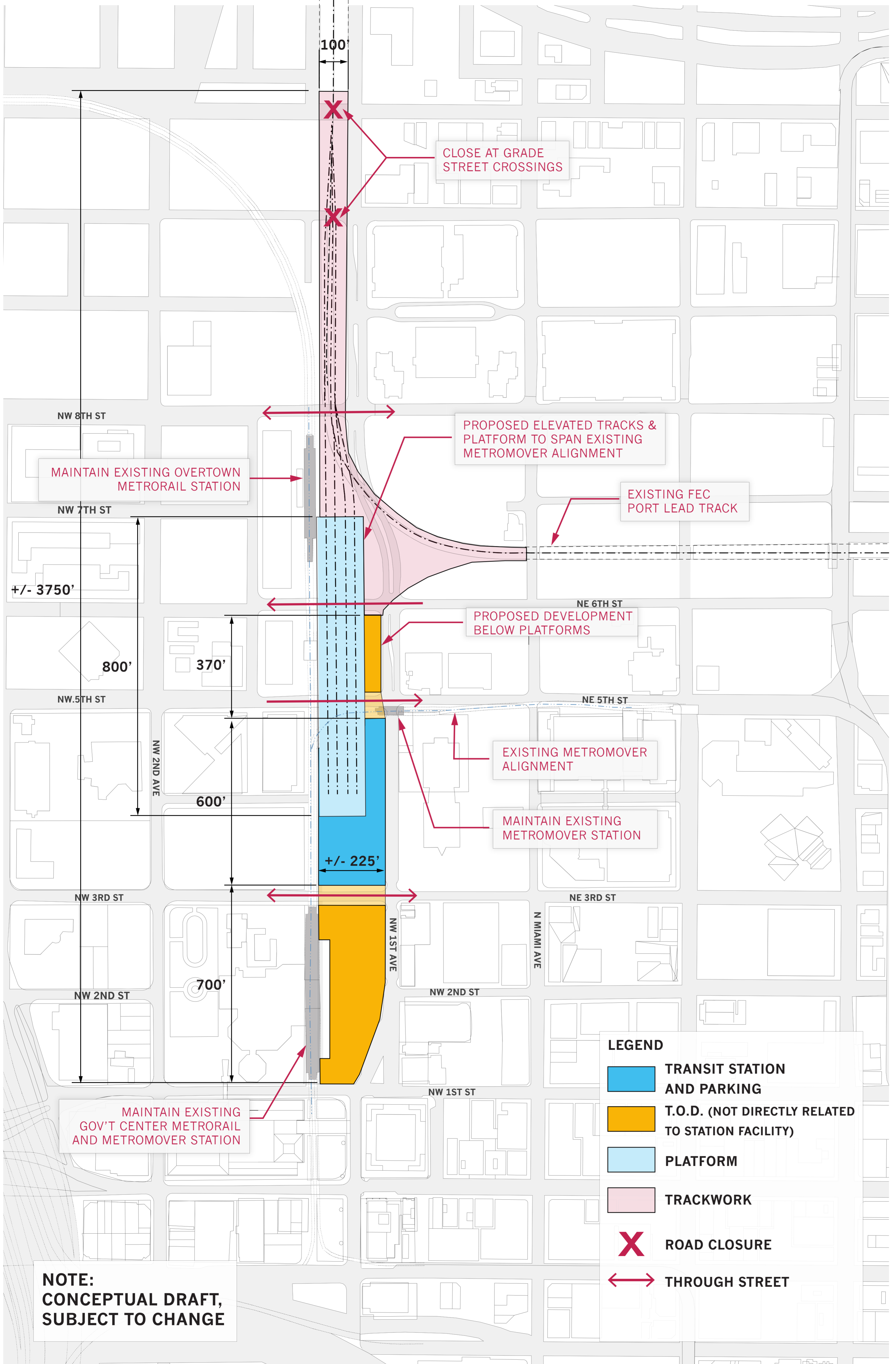


LEGEND

- TRANSIT STATION AND PARKING
- T.O.D. (NOT DIRECTLY RELATED TO STATION FACILITY)
- PLATFORM
- TRACKWORK
- X ROAD CLOSURE
- THROUGH STREET

**NOTE:
CONCEPTUAL DRAFT,
SUBJECT TO CHANGE**

0' 100' 200' 500'



**NOTE:
CONCEPTUAL DRAFT,
SUBJECT TO CHANGE**

LEGEND

- TRANSIT STATION AND PARKING**
- T.O.D. (NOT DIRECTLY RELATED TO STATION FACILITY)**
- PLATFORM**
- TRACKWORK**
- X **ROAD CLOSURE**
- THROUGH STREET**

0' 100' 500' 1000'