

Appendix 3.7-A
Special-Status Species and Observed Habitats

Attachment 1
 Special-Status Plant Species with Potential to Occur in the Project Vicinity

Scientific Name Common Name	Federal Status ^a	State Status ^b	CNPS ^c	BNSF Alternative	Hanford West Bypass (All)	Corcoran Elevated	Corcoran Bypass	Allensworth Bypass	Wasco-Shafter Bypass	Bakersfield South and Hybrid	Heavy Maintenance Facilities ^d
Alismataceae											
<i>Sagittaria sanfordii</i> Sanford's arrowhead	--	--	List 1B.2	Low	Low	No Potential	No Potential	No Potential	No Potential	No Potential	Fresno: No Potential KCH: No Potential KCGW: No Potential KCGSE: No Potential KCGSW: No Potential
Apiaceae											
<i>Eryngium spinosepalum</i> spiny-sepaled button-celery	--	--	List 1B.2	Moderate	Low	Low	Low	Moderate	Low	Low	Fresno: Moderate KCH: Moderate KCGW: No Potential KCGSE: Low KCGSW: No Potential
Asteraceae											
<i>Cirsium crassicaule</i> slough thistle	--	--	List 1B.1	Moderate	Low	Low	Low	Moderate	Low	Low	Fresno: Low KCH: Moderate KCGW: No Potential KCGSE: Low KCGSW: No Potential
<i>Heterotheca shevockii</i> Shevock's golden-aster	--	--	List 1B.3	No Potential	No Potential	No Potential	No Potential	No Potential	No Potential	No Potential	Fresno: No Potential KCH: No Potential KCGW: No Potential KCGSE: No Potential KCGSW: No Potential

Attachment 1
 Special-Status Plant Species with Potential to Occur in the Project Vicinity

Scientific Name Common Name	Federal Status ^a	State Status ^b	CNPS ^c	BNSF Alternative	Hanford West Bypass (All)	Corcoran Elevated	Corcoran Bypass	Allensworth Bypass	Wasco-Shafter Bypass	Bakersfield South and Hybrid	Heavy Maintenance Facilities ^d
<i>Lasthenia glabrata</i> ssp. <i>coulteri</i> Coulter's goldfields	--	--	List 1B.1	Moderate	Low	Low	Low	Moderate	Moderate	Moderate	Fresno: Low KCH: Low KCGW: No Potential KCGSE: Low KCGSW: No Potential
<i>Layia heterotricha</i> pale-yellow layia	--	--	List 1B.1	No Potential	No Potential	No Potential	No Potential	No Potential	No Potential	No Potential	Fresno: No Potential KCH: No Potential KCGW: No Potential KCGSE: No Potential KCGSW: No Potential
<i>Layia leucopappa</i> Comanche Point layia	--	--	List 1B.1	Low	No Potential	Low	Low	Low	Low	Low	Fresno: Low KCH: Low KCGW: No Potential KCGSE: Low KCGSW: No Potential
<i>Layia munzii</i> Munz's tidy-tips	--	--	List 1B.2	Moderate	Low	Low	Low	Moderate	Moderate	Moderate	Fresno: Moderate KCH: Moderate KCGW: No Potential KCGSE: Low KCGSW: No Potential
<i>Monolopia congdonii</i> San Joaquin woolly threads	E	--	List 1B.2	Moderate	Low	Low	Moderate	Moderate	Moderate	Moderate	Fresno: Moderate KCH: Moderate KCGW: No Potential KCGSE: Low KCGSW: No Potential

Attachment 1
 Special-Status Plant Species with Potential to Occur in the Project Vicinity

Scientific Name Common Name	Federal Status ^a	State Status ^b	CNPS ^c	BNSF Alternative	Hanford West Bypass (All)	Corcoran Elevated	Corcoran Bypass	Allensworth Bypass	Wasco-Shafter Bypass	Bakersfield South and Hybrid	Heavy Maintenance Facilities ^d
<i>Pseudobahia peirsonii</i> San Joaquin adobe sunburst	T	E	List 1B.1	Low	No Potential	Low	Low	Low	Low	Low	Fresno: Low KCH: Low KCGW: No Potential KCGSE: Low KCGSW: No Potential
<i>Stylocline citroleum</i> oil neststraw	--	--	List 1B.1	Low	No Potential	No Potential	No Potential	No Potential	No Potential	Low	Fresno: No Potential KCH: No Potential KCGW: No Potential KCGSE: No Potential KCGSW: No Potential
<i>Stylocline masonii</i> Mason's neststraw	--	--	List 1B.1	Low	No Potential	No Potential	No Potential	No Potential	Low	Low	Fresno: No Potential KCH: No Potential KCGW: No Potential KCGSE: Low KCGSW: Low
Brassicaceae											
<i>Caulanthus californicus</i> California jewel-flower	E	E	List 1B.1	Moderate	Low	Low	Moderate	Moderate	Moderate	Moderate	Fresno: Moderate KCH: Moderate KCGW: No Potential KCGSE: Low KCGSW: No Potential
<i>Lepidium jaredii</i> ssp. <i>album</i> Panoche pepper-grass	--	--	List 1B.2	Low	Low	Low	Low	Low	Low	Low	Fresno: Low KCH: Low KCGW: No Potential KCGSE: Low KCGSW: Low

Attachment 1
 Special-Status Plant Species with Potential to Occur in the Project Vicinity

Scientific Name Common Name	Federal Status ^a	State Status ^b	CNPS ^c	BNSF Alternative	Hanford West Bypass (All)	Corcoran Elevated	Corcoran Bypass	Allensworth Bypass	Wasco-Shafter Bypass	Bakersfield South and Hybrid	Heavy Maintenance Facilities ^d
<i>Tropidocarpum californicum</i> king's gold	--	--	List 1B.1	Moderate	Low	Low	Low	Moderate	Moderate	Moderate	Fresno: Moderate KCH: Moderate KCGW: No Potential KCGSE: Low KCGSW: No Potential
<i>Tropidocarpum caparideum</i> caper-fruited tropidocarpum	--	--	List 1B.1	No Potential	No Potential	No Potential	No Potential	No Potential	No Potential	No Potential	Fresno: No Potential KCH: No Potential KCGW: No Potential KCGSE: No Potential KCGSW: No Potential
Bryaceae											
<i>Schizymerium shevockii</i> Shevock's copper moss	--	--	List 1B.2	No Potential	No Potential	No Potential	No Potential	No Potential	No Potential	No Potential	Fresno: No Potential KCH: No Potential KCGW: No Potential KCGSE: No Potential KCGSW: No Potential
Cactaceae											
<i>Opuntia basilaris</i> var. <i>treleasei</i> Bakersfield cactus	E	E	List 1B.1	Low	No Potential	No Potential	No Potential	No Potential	No Potential	Low	Fresno: Low KCH: Low KCGW: No Potential KCGSE: Low KCGSW: No Potential

Attachment 1
 Special-Status Plant Species with Potential to Occur in the Project Vicinity

Scientific Name Common Name	Federal Status ^a	State Status ^b	CNPS ^c	BNSF Alternative	Hanford West Bypass (All)	Corcoran Elevated	Corcoran Bypass	Allensworth Bypass	Wasco-Shafter Bypass	Bakersfield South and Hybrid	Heavy Maintenance Facilities ^d
Campanulaceae											
<i>Downingia pusilla</i> dwarf downingia	--	--	List 2.2	No Potential	No Potential	No Potential	No Potential	No Potential	No Potential	No Potential	Fresno: No Potential KCH: No Potential KCGW: No Potential KCGSE: No Potential KCGSW: No Potential
Chenopodiaceae											
<i>Atriplex cordulata</i> heartscale	--	--	List 1B.2	High	Moderate	Low	Moderate	High	Moderate	Moderate	Fresno: Moderate KCH: Moderate KCGW: No Potential KCGSE: Low KCGSW: No Potential
<i>Atriplex coronata</i> var. <i>vallicola</i> Lost Hills crownscale	--	--	List 1B.2	High	Moderate	Low	Moderate	High	Moderate	Moderate	Fresno: Moderate KCH: Moderate KCGW: No Potential KCGSE: Low KCGSW: No Potential
<i>Atriplex depressa</i> brittlescale	--	--	List 1B.2	High	Moderate	Low	Low	High	Moderate	Moderate	Fresno: Moderate KCH: Moderate KCGW: No Potential KCGSE: Low KCGSW: No Potential

Attachment 1
 Special-Status Plant Species with Potential to Occur in the Project Vicinity

Scientific Name Common Name	Federal Status ^a	State Status ^b	CNPS ^c	BNSF Alternative	Hanford West Bypass (All)	Corcoran Elevated	Corcoran Bypass	Allensworth Bypass	Wasco-Shafter Bypass	Bakersfield South and Hybrid	Heavy Maintenance Facilities ^d
<i>Atriplex erecticaulis</i> Earlimart orache	--	--	List 1B.2	Moderate	Moderate	Low	Moderate	Moderate	Moderate	Moderate	Fresno: Low KCH: Moderate KCGW: No Potential KCGSE: Low KCGSW: No Potential
<i>Atriplex minuscula</i> lesser saltscale	--	--	List 1B.1	High	Moderate	Low	Moderate	High	Moderate	Moderate	Fresno: Moderate KCH: Moderate KCGW: No Potential KCGSE: Low KCGSW: No Potential
<i>Atriplex persistens</i> vernal pool smallscale	--	--	List 1B.2	Moderate	Low	Low	Low	Moderate	Low	Low	Fresno: Low KCH: Low KCGW: No Potential KCGSE: Low KCGSW: No Potential
<i>Atriplex subtilis</i> subtle orache	--	--	List 1B.2	High	Moderate	Low	Moderate	High	Moderate	Moderate	Fresno: Moderate KCH: Moderate KCGW: No Potential KCGSE: Low KCGSW: No Potential
<i>Atriplex tularensis</i> Bakersfield smallscale	--	E	List 1B.1	Moderate	Low	Low	Low	Moderate	Moderate	Moderate	Fresno: Moderate KCH: Moderate KCGW: No Potential KCGSE: Low KCGSW: No Potential

Attachment 1
 Special-Status Plant Species with Potential to Occur in the Project Vicinity

Scientific Name Common Name	Federal Status ^a	State Status ^b	CNPS ^c	BNSF Alternative	Hanford West Bypass (All)	Corcoran Elevated	Corcoran Bypass	Allensworth Bypass	Wasco-Shafter Bypass	Bakersfield South and Hybrid	Heavy Maintenance Facilities ^d
Euphorbiaceae											
<i>Chamaesyce hooveri</i> Hoover's spurge	T	--	List 1B.2	Moderate	Low	Low	Low	Moderate	Low	Low	Fresno: Low KCH: Moderate KCGW: No Potential KCGSE: Low KCGSW: No Potential
<i>Chamaesyce hooveri</i> Hoover's spurge *Critical Habitat*	D	--	--	No Potential	No Potential	No Potential	No Potential	No Potential	No Potential	No Potential	Fresno: No Potential KCH: No Potential KCGW: No Potential KCGSE: No Potential KCGSW: No Potential
Fabaceae											
<i>Astragalus hornii</i> var. <i>hornii</i> Horn's milk-vetch	--	--	List 1B.1	Moderate	Low	Low	Low	Moderate	Moderate	Moderate	Fresno: Moderate KCH: Moderate KCGW: No Potential KCGSE: Low KCGSW: No Potential
Geraniaceae											
<i>California macrophylla</i> round-leaved filaree	--	--	List 1B.1	Moderate	Low	Low	Moderate	Moderate	Moderate	Moderate	Fresno: Moderate KCH: Moderate KCGW: No Potential KCGSE: Low KCGSW: No Potential

Attachment 1
 Special-Status Plant Species with Potential to Occur in the Project Vicinity

Scientific Name Common Name	Federal Status ^a	State Status ^b	CNPS ^c	BNSF Alternative	Hanford West Bypass (All)	Corcoran Elevated	Corcoran Bypass	Allensworth Bypass	Wasco-Shafter Bypass	Bakersfield South and Hybrid	Heavy Maintenance Facilities ^d
Hydrophyllaceae											
<i>Nama stenocarpum</i> mud nama	--	--	List 2.2	Low	Moderate	No Potential	No Potential	Low	Low	No Potential	Fresno: No Potential KCH: No Potential KCGW: No Potential KCGSE: No Potential KCGSW: No Potential
Lamiaceae											
<i>Monardella linoides</i> ssp. <i>oblonga</i> flaxleaf monardella	--	--	List 1B.3	No Potential	No Potential	No Potential	No Potential	No Potential	No Potential	No Potential	Fresno: No Potential KCH: No Potential KCGW: No Potential KCGSE: No Potential KCGSW: No Potential
Liliaceae											
<i>Calochortus striatus</i> alkali mariposa-lily	--	--	List 1B.2	Moderate	Low	Low	Moderate	Moderate	Moderate	Moderate	Fresno: Moderate KCH: Moderate KCGW: No Potential KCGSE: Low KCGSW: No Potential
<i>Fritillaria brandegeei</i> Greenhorn fritillary	--	--	List 1B.3	No Potential	No Potential	No Potential	No Potential	No Potential	No Potential	No Potential	Fresno: No Potential KCH: No Potential KCGW: No Potential KCGSE: No Potential KCGSW: No Potential

Attachment 1
 Special-Status Plant Species with Potential to Occur in the Project Vicinity

Scientific Name Common Name	Federal Status ^a	State Status ^b	CNPS ^c	BNSF Alternative	Hanford West Bypass (All)	Corcoran Elevated	Corcoran Bypass	Allensworth Bypass	Wasco-Shafter Bypass	Bakersfield South and Hybrid	Heavy Maintenance Facilities ^d
<i>Fritillaria striata</i> striped adobe-lily	--	T	List 1B.1	Low	No Potential	Low	Low	Low	Low	Low	Fresno: Low KCH: Low KCGW: No Potential KCGSE: Low KCGSW: No Potential
Malvaceae											
<i>Eremalche kernensis</i> Kern mallow	E	--	List 1B.1	Low	Low	Low	Low	Low	Low	Low	Fresno: Low KCH: Low KCGW: No Potential KCGSE: Low KCGSW: No Potential
Onagraceae											
<i>Clarkia tembloriensis</i> ssp. <i>calientensis</i> Vasek's clarkia	--	--	List 1B.1	No Potential	No Potential	No Potential	No Potential	No Potential	No Potential	No Potential	Fresno: No Potential KCH: No Potential KCGW: No Potential KCGSE: No Potential KCGSW: No Potential
Papaveraceae											
<i>Eschscholzia lemmonii</i> ssp. <i>kernensis</i> Tejon poppy	--	--	List 1B.1	No Potential	No Potential	No Potential	No Potential	No Potential	No Potential	No Potential	Fresno: No Potential KCH: No Potential KCGW: No Potential KCGSE: No Potential KCGSW: No Potential

Attachment 1
 Special-Status Plant Species with Potential to Occur in the Project Vicinity

Scientific Name Common Name	Federal Status ^a	State Status ^b	CNPS ^c	BNSF Alternative	Hanford West Bypass (All)	Corcoran Elevated	Corcoran Bypass	Allensworth Bypass	Wasco-Shafter Bypass	Bakersfield South and Hybrid	Heavy Maintenance Facilities ^d
Poaceae											
<i>Imperata brevifolia</i> California satintail	--	--	List 2.1	Moderate	Low	Low	Low	Moderate	Moderate	Moderate	Fresno: Moderate KCH: Moderate KCGW: No Potential KCGSE: Low KCGSW: No Potential
<i>Orcuttia inaequalis</i> San Joaquin Valley Orcutt grass	T	E	List 1B.1	Low	Low	Low	Low	Low	Low	Low	Fresno: Low KCH: Low KCGW: No Potential KCGSE: Low KCGSW: No Potential
<i>Orcuttia inaequalis</i> San Joaquin Valley Orcutt grass *Critical Habitat*	D	--	--	No Potential	No Potential	No Potential	No Potential	No Potential	No Potential	No Potential	Fresno: No Potential KCH: No Potential KCGW: No Potential KCGSE: No Potential KCGSW: No Potential
<i>Orcuttia pilosa</i> Hairy Orcutt grass	E	E	List 1B.1	No Potential	No Potential	No Potential	No Potential	No Potential	No Potential	No Potential	Fresno: No Potential KCH: No Potential KCGW: No Potential KCGSE: No Potential KCGSW: No Potential
<i>Orcuttia pilosa</i> Hairy Orcutt grass *Critical Habitat*	D	--	--	No Potential	No Potential	No Potential	No Potential	No Potential	No Potential	No Potential	Fresno: No Potential KCH: No Potential KCGW: No Potential KCGSE: No Potential KCGSW: No Potential

Attachment 1
 Special-Status Plant Species with Potential to Occur in the Project Vicinity

Scientific Name Common Name	Federal Status ^a	State Status ^b	CNPS ^c	BNSF Alternative	Hanford West Bypass (All)	Corcoran Elevated	Corcoran Bypass	Allensworth Bypass	Wasco-Shafter Bypass	Bakersfield South and Hybrid	Heavy Maintenance Facilities ^d
<i>Tuctoria greenei</i> Greene's tuctoria	E	R	List 1B.1	Low	Low	Low	Low	Low	Low	Low	Fresno: Low KCH: Low KCGW: No Potential KCGSE: Low KCGSW: No Potential
<i>Tuctoria greenei</i> Greene's tuctoria *Critical Habitat*	D	--	--	No Potential	No Potential	No Potential	No Potential	No Potential	No Potential	No Potential	Fresno: No Potential KCH: No Potential KCGW: No Potential KCGSE: No Potential KCGSW: No Potential
Polemoniaceae											
<i>Eriastrum hooveri</i> Hoover's woolly-star	DL	--	List 4.2	Moderate	Moderate	Low	Low	Moderate	Moderate	Moderate	Fresno: Moderate KCH: Moderate KCGW: No Potential KCGSE: Low KCGSW: No Potential
<i>Leptosiphon serrulatus</i> Madera leptosiphon	--	--	List 1B.2	No Potential	No Potential	No Potential	No Potential	No Potential	No Potential	No Potential	Fresno: No Potential KCH: No Potential KCGW: No Potential KCGSE: No Potential KCGSW: No Potential

Attachment 1
 Special-Status Plant Species with Potential to Occur in the Project Vicinity

Scientific Name Common Name	Federal Status ^a	State Status ^b	CNPS ^c	BNSF Alternative	Hanford West Bypass (All)	Corcoran Elevated	Corcoran Bypass	Allensworth Bypass	Wasco-Shafter Bypass	Bakersfield South and Hybrid	Heavy Maintenance Facilities ^d
<i>Navarretia setiloba</i> Piute Mountains navarretia	--	--	List 1B.1	No Potential	No Potential	No Potential	No Potential	No Potential	No Potential	No Potential	Fresno: No Potential KCH: No Potential KCGW: No Potential KCGSE: No Potential KCGSW: No Potential
Polygonaceae											
<i>Eriogonum nortonii</i> Pinnacles buckwheat	--	--	List 1B.3	No Potential	No Potential	No Potential	No Potential	No Potential	No Potential	No Potential	Fresno: No Potential KCH: No Potential KCGW: No Potential KCGSE: No Potential KCGSW: No Potential
Pottiaceae											
<i>Pterygoneurum californicum</i> California chalk moss	--	--	List 1B.1	Low	No Potential	No Potential	No Potential	Low	Low	Low	Fresno: No Potential KCH: No Potential KCGW: Low KCGSE: Low KCGSW: Low
<i>Tortula californica</i> California screw moss	--	--	List 1B.2	Low	No Potential	No Potential	No Potential	Low	Low	Low	Fresno: No Potential KCH: No Potential KCGW: Low KCGSE: Low KCGSW: Low

Attachment 1
 Special-Status Plant Species with Potential to Occur in the Project Vicinity

Scientific Name Common Name	Federal Status ^a	State Status ^b	CNPS ^c	BNSF Alternative	Hanford West Bypass (All)	Corcoran Elevated	Corcoran Bypass	Allensworth Bypass	Wasco-Shafter Bypass	Bakersfield South and Hybrid	Heavy Maintenance Facilities ^d
Ranunculaceae											
<i>Delphinium purpusii</i> rose-flowered larkspur	--	--	List 1B.3	No Potential	No Potential	No Potential	No Potential	No Potential	No Potential	No Potential	Fresno: No Potential KCH: No Potential KCGW: No Potential KCGSE: No Potential KCGSW: No Potential
<i>Delphinium recurvatum</i> recurved larkspur	--	--	List 1B.2	High	High	Low	Moderate	High	Moderate	Moderate	Fresno: Moderate KCH: Moderate KCGW: No Potential KCGSE: Low KCGSW: No Potential
<i>Myosurus minimus</i> ssp. <i>apus</i> little mousetail	--	--	List 3.1	High	Low	Low	Moderate	High	Moderate	Moderate	Fresno: Moderate KCH: Moderate KCGW: No Potential KCGSE: Low KCGSW: No Potential
Scrophulariaceae											
<i>Castilleja campestris</i> ssp. <i>succulenta</i> succulent owl's-clover	T	E	List 1B.2	No Potential	No Potential	No Potential	No Potential	No Potential	No Potential	No Potential	Fresno: No Potential KCH: No Potential KCGW: No Potential KCGSE: No Potential KCGSW: No Potential

Attachment 1
 Special-Status Plant Species with Potential to Occur in the Project Vicinity

Scientific Name Common Name	Federal Status ^a	State Status ^b	CNPS ^c	BNSF Alternative	Hanford West Bypass (All)	Corcoran Elevated	Corcoran Bypass	Allensworth Bypass	Wasco-Shafter Bypass	Bakersfield South and Hybrid	Heavy Maintenance Facilities ^d
<i>Castilleja campestris</i> ssp. <i>succulenta</i> succulent owl's-clover *Critical Habitat*	D	--	--	No Potential	No Potential	No Potential	No Potential	No Potential	No Potential	No Potential	Fresno: No Potential KCH: No Potential KCGW: No Potential KCGSE: No Potential KCGSW: No Potential
<i>Chloropyron molle</i> ssp. <i>hispidum</i> Hispid bird's-beak	--	--	1B.1	No potential	No potential	No potential	No potential	Low	Low	Low	Fresno: No Potential KCH: No Potential KCGW: Low KCGSE: Low KCGSW: Low
<i>Mimulus acutidens</i> Kings River monkeyflower	--	--	List 3	No Potential	No Potential	No Potential	No Potential	No Potential	No Potential	No Potential	Fresno: No Potential KCH: No Potential KCGW: No Potential KCGSE: No Potential KCGSW: No Potential
<i>Mimulus pictus</i> calico monkeyflower	--	--	List 1B.2	No Potential	No Potential	No Potential	No Potential	No Potential	No Potential	No Potential	Fresno: No Potential KCH: No Potential KCGW: No Potential KCGSE: No Potential KCGSW: No Potential

Attachment 1
 Special-Status Plant Species with Potential to Occur in the Project Vicinity

Scientific Name Common Name	Federal Status ^a	State Status ^b	CNPS ^c	BNSF Alternative	Hanford West Bypass (All)	Corcoran Elevated	Corcoran Bypass	Allensworth Bypass	Wasco-Shafter Bypass	Bakersfield South and Hybrid	Heavy Maintenance Facilities ^d
Violaceae											
<i>Viola pinetorum</i> ssp. <i>grisea</i> goosefoot yellow violet	--	--	List 1B.3	No Potential	No Potential	No Potential	No Potential	No Potential	No Potential	No Potential	Fresno: No Potential KCH: No Potential KCGW: No Potential KCGSE: No Potential KCGSW: No Potential
<p>Notes:</p> <p>Potential to occur designations:</p> <p>No potential: Outside of historic range or habitat absent from study area</p> <p>Low potential: Inside of present range and low or marginal quality habitat present within the study area</p> <p>Moderate potential: Within present range and suitable habitat present within the habitat study area</p> <p>High potential: Observed within habitat study area or recorded in the vicinity with supporting habitat present in Habitat Study Area</p> <p>-- = No status designation</p> <p>^a Federal status:</p> <p>E (Endangered) = Listed as endangered under the federal ESA.</p> <p>T (Threatened) = Listed as threatened under the federal ESA.</p> <p>DL (Delisted) = Delisted from the federal ESA.</p> <p>D (Designated) = Critical Habitat designated under the federal ESA</p> <p>^b State status:</p> <p>E (Endangered) = Listed as endangered under the CESA.</p> <p>T (Threatened) = Listed as threatened under the CESA.</p> <p>R (Rare) = Listed as rare under the CESA.</p>						<p>^c CNPS status:</p> <p>LIST 1A = Presumed extinct in California</p> <p>LIST 1B = Rare, threatened, or endangered in California and elsewhere</p> <p>LIST 2 = Rare, threatened, or endangered in California, but more common elsewhere</p> <p>LIST 3 = More information about this plant (Review List)</p> <p>LIST 4 = Plants of limited distribution (Watch List)</p> <p>-.1 = Seriously endangered in California; -.2 = Fairly endangered in California; -.3 = Not very endangered in California</p> <p>^d Heavy Maintenance Facility (HMF) Alternatives:</p> <p>Fresno: Fresno Works–Fresno HMF Site</p> <p>KCH: Kings County–Hanford HMF Site</p> <p>KCGW: Kern Council of Governments–Wasco HMF Site</p> <p>KCGSE: Kern Council of Governments–Shafter East HMF Site</p> <p>KCGSW: Kern Council of Governments–Shafter West HMF Site</p>					

This page intentionally left blank

Attachment 2
 Special-Status Wildlife Species with Potential to Occur in the Project Vicinity

Scientific Name Common Name	Federal Status ^b	State Status ^c	Potential to Occur ^a								
			BNSF Alternative	Hanford West Bypass (All)	Corcoran Elevated	Corcoran Bypass	Allensworth Bypass	Wasco-Shafter Bypass	Bakersfield South and Hybrid	Heavy Maintenance Facilities ^d	
Invertebrates											
<i>Branchinecta conservatio</i> CONSERVANCY FAIRY SHRIMP	E	--	No Potential	No Potential	No Potential	No Potential	No Potential	No Potential	No Potential	No Potential	Fresno: No Potential KCH: No Potential KCGW: No Potential KCGSE: No Potential KCGSW: No Potential
<i>Branchinecta lynchi</i> VERNAL POOL FAIRY SHRIMP	T	--	High	Moderate	Moderate	Moderate	High	Low	Low	Fresno: Moderate KCH: No Potential KCGW: No Potential KCGSE: No Potential KCGSW: No Potential	
<i>Branchinecta lynchi</i> VERNAL POOL FAIRY SHRIMP *CRITICAL HABITAT*	D	--	No Potential	No Potential	No Potential	No Potential	No Potential	No Potential	No Potential	No Potential	Fresno: No Potential KCH: No Potential KCGW: No Potential KCGSE: No Potential KCGSW: No Potential
<i>Desmocerus californicus dimorphus</i> VALLEY ELDERBERRY LONGHORN BEETLE	T	--	Moderate	Moderate	Moderate	Moderate	Moderate	Low	Moderate	Fresno: No Potential KCH: No Potential KCGW: No Potential KCGSE: No Potential KCGSW: No Potential	

Attachment 2
 Special-Status Wildlife Species with Potential to Occur in the Project Vicinity

Scientific Name Common Name	Federal Status ^b	State Status ^c	Potential to Occur ^a							Heavy Maintenance Facilities ^d
			BNSF Alternative	Hanford West Bypass (All)	Corcoran Elevated	Corcoran Bypass	Allensworth Bypass	Wasco-Shafter Bypass	Bakersfield South and Hybrid	
<i>Lepidurus packardii</i> VERNAL POOL TADPOLE SHRIMP	E	--	Low	Low	Low	Low	Low	Low	Low	Fresno: Moderate KCH: No Potential KCGW: No Potential KCGSE: No Potential KCGSW: No Potential
<i>Lepidurus packardii</i> VERNAL POOL TADPOLE SHRIMP *CRITICAL HABITAT*	D	--	No Potential	No Potential	No Potential	No Potential	No Potential	No Potential	No Potential	Fresno: No Potential KCH: No Potential KCGW: No Potential KCGSE: No Potential KCGSW: No Potential
Fish										
<i>Archoplites interruptus</i> SACRAMENTO PERCH	--	SSC	No Potential	No Potential	No Potential	No Potential	No Potential	No Potential	No Potential	Fresno: No Potential KCH: No Potential KCGW: No Potential KCGSE: No Potential KCGSW: No Potential
<i>Hypomesus transpacificus</i> DELTA SMELT	T	T	No Potential	No Potential	No Potential	No Potential	No Potential	No Potential	No Potential	Fresno: No Potential KCH: No Potential KCGW: No Potential KCGSE: No Potential KCGSW: No Potential

Attachment 2
 Special-Status Wildlife Species with Potential to Occur in the Project Vicinity

Scientific Name Common Name	Federal Status ^b	State Status ^c	Potential to Occur ^a								
			BNSF Alternative	Hanford West Bypass (All)	Corcoran Elevated	Corcoran Bypass	Allensworth Bypass	Wasco-Shafter Bypass	Bakersfield South and Hybrid	Heavy Maintenance Facilities ^d	
<i>Entosphenus hubbsi</i> KERN BROOK LAMPREY	--	SSC	Low	No Potential	No Potential	No Potential	No Potential	No Potential	No Potential	Low	Fresno: No Potential KCH: No Potential KCGW: No Potential KCGSE: No Potential KCGSW: No Potential
<i>Lampetra ayresi</i> RIVER LAMPREY	--	SSC	No Potential	No Potential	No Potential	No Potential	No Potential	No Potential	No Potential	No Potential	Fresno: No Potential KCH: No Potential KCGW: No Potential KCGSE: No Potential KCGSW: No Potential
<i>Lavinia symmetricus symmetricus</i> SAN JOAQUIN ROACH	--	SSC	No Potential	No Potential	No Potential	No Potential	No Potential	No Potential	No Potential	No Potential	Fresno: No Potential KCH: No Potential KCGW: No Potential KCGSE: No Potential KCGSW: No Potential
<i>Mylopharodon conocephalus</i> HARDHEAD	--	SSC	No Potential	No Potential	No Potential	No Potential	No Potential	No Potential	No Potential	No Potential	Fresno: No Potential KCH: No Potential KCGW: No Potential KCGSE: No Potential KCGSW: No Potential

Attachment 2
 Special-Status Wildlife Species with Potential to Occur in the Project Vicinity

Scientific Name Common Name	Federal Status ^b	State Status ^c	Potential to Occur ^a							Heavy Maintenance Facilities ^d	
			BNSF Alternative	Hanford West Bypass (All)	Corcoran Elevated	Corcoran Bypass	Allensworth Bypass	Wasco-Shafter Bypass	Bakersfield South and Hybrid		
<i>Oncorhynchus mykiss</i> CENTRAL VALLEY STEELHEAD	T	--	No Potential	No Potential	No Potential	No Potential	No Potential	No Potential	No Potential	No Potential	Fresno: No Potential KCH: No Potential KCGW: No Potential KCGSE: No Potential KCGSW: No Potential
Amphibians											
<i>Ambystoma californiense</i> CALIFORNIA TIGER SALAMANDER	T	T/SSC	Low	Low	Low	Low	No Potential	No Potential	No Potential	No Potential	Fresno: Low KCH: Low KCGW: No Potential KCGSE: No Potential KCGSW: No Potential
<i>Ambystoma californiense</i> CALIFORNIA TIGER SALAMANDER *CRITICAL HABITAT*	D	--	No Potential	No Potential	No Potential	No Potential	No Potential	No Potential	No Potential	No Potential	Fresno: No Potential KCH: No Potential KCGW: No Potential KCGSE: No Potential KCGSW: No Potential
<i>Batrachoseps simatus</i> KERN CANYON SLENDER SALAMANDER	--	T	No Potential	No Potential	No Potential	No Potential	No Potential	No Potential	No Potential	No Potential	Fresno: No Potential KCH: No Potential KCGW: No Potential KCGSE: No Potential KCGSW: No Potential

Attachment 2
 Special-Status Wildlife Species with Potential to Occur in the Project Vicinity

Scientific Name Common Name	Federal Status ^b	State Status ^c	Potential to Occur ^a								
			BNSF Alternative	Hanford West Bypass (All)	Corcoran Elevated	Corcoran Bypass	Allensworth Bypass	Wasco-Shafter Bypass	Bakersfield South and Hybrid	Heavy Maintenance Facilities ^d	
<i>Batrachoseps stebbinsi</i> TEHACHAPI SLENDER SALAMANDER	C	T	No Potential	No Potential	No Potential	No Potential	No Potential	No Potential	No Potential	No Potential	Fresno: No Potential KCH: No Potential KCGW: No Potential KCGSE: No Potential KCGSW: No Potential
<i>Ensatina eschscholtzii croceator</i> YELLOW-BLOTCHED SALAMANDER	--	SSC	No Potential	No Potential	No Potential	No Potential	No Potential	No Potential	No Potential	No Potential	Fresno: No Potential KCH: No Potential KCGW: No Potential KCGSE: No Potential KCGSW: No Potential
<i>Lithobates (=Rana) pipiens</i> NORTHERN LEOPARD FROG *LIMITED TO* NATIVE POPULATIONS ONLY	C	SSC	No Potential	No Potential	No Potential	No Potential	No Potential	No Potential	No Potential	No Potential	Fresno: No Potential KCH: No Potential KCGW: No Potential KCGSE: No Potential KCGSW: No Potential
<i>Rana boylei</i> FOOTHILL YELLOW-LEGGED FROG	--	SSC	No Potential	No Potential	No Potential	No Potential	No Potential	No Potential	No Potential	No Potential	Fresno: No Potential KCH: No Potential KCGW: No Potential KCGSE: No Potential KCGSW: No Potential

Attachment 2
 Special-Status Wildlife Species with Potential to Occur in the Project Vicinity

Scientific Name Common Name	Federal Status ^b	State Status ^c	Potential to Occur ^a							Heavy Maintenance Facilities ^d	
			BNSF Alternative	Hanford West Bypass (All)	Corcoran Elevated	Corcoran Bypass	Allensworth Bypass	Wasco-Shafter Bypass	Bakersfield South and Hybrid		
<i>Rana draytonii</i> (<i>Rana aurora draytonii</i>) CALIFORNIA RED-LEGGED FROG	T	SSC	No Potential	No Potential	No Potential	No Potential	No Potential	No Potential	No Potential	No Potential	Fresno: No Potential KCH: No Potential KCGW: No Potential KCGSE: No Potential KCGSW: No Potential
<i>Spea (=Scaphiopus) hammondii</i> WESTERN SPADEFOOT TOAD	--	SSC	High	Moderate	Moderate	Moderate	High	Moderate	Moderate	Moderate	Fresno: Moderate KCH: Moderate KCGW: Low KCGSE: Moderate KCGSW: Low
Reptiles											
<i>Actinemys (=Clemmys / Emys) marmorata</i> WESTERN POND TURTLE	--	SSC	Moderate ^f	Moderate ^f	Moderate ^f	Moderate ^f	Moderate ^f	Moderate ^f	Moderate ^f	Moderate ^f	Fresno: Low ^f KCH: Low ^f KCGW: Low ^f KCGSE: Low ^f KCGSW: Low ^f
<i>Anniella pulchra pulchra</i> SILVERY LEGLESS LIZARD	--	SSC	Moderate	Moderate	Moderate	Moderate	Moderate	Moderate	Low	Moderate	Fresno: Low KCH: Low KCGW: Low KCGSE: Low KCGSW: Low

Attachment 2
 Special-Status Wildlife Species with Potential to Occur in the Project Vicinity

Scientific Name Common Name	Federal Status ^b	State Status ^c	Potential to Occur ^a							Heavy Maintenance Facilities ^d
			BNSF Alternative	Hanford West Bypass (All)	Corcoran Elevated	Corcoran Bypass	Allensworth Bypass	Wasco-Shafter Bypass	Bakersfield South and Hybrid	
<i>Gambelia</i> (= <i>Crotaphytus</i>) sila BLUNT-NOSED LEOPARD LIZARD	E	E/FP	High	No Potential	No Potential	No Potential	High	No Potential	No Potential	Fresno: No Potential KCH: No Potential KCGW: Low KCGSE: Moderate KCGSW: Low
<i>Masticophis</i> <i>flagellum ruddocki</i> SAN JOAQUIN WHIPSNAKE	--	SSC	Moderate	Moderate	Moderate	Moderate	Moderate	Moderate	Moderate	Fresno: No Potential KCH: No Potential KCGW: No Potential KCGSE: No Potential KCGSW: No Potential
<i>Phrynosoma</i> <i>blainvillii</i> COAST (CALIFORNIA) HORNED LIZARD	--	SSC	High	Moderate ^e	Moderate ^e	Moderate ^e	High ^e	No Potential	Moderate	Fresno: No Potential KCH: No Potential KCGW: No Potential KCGSE: No Potential KCGSW: No Potential
<i>Salvadora hexalepis</i> <i>virgultea</i> COAST (WESTERN) PATCH-NOSED SNAKE	--	SSC	No Potential	No Potential	No Potential	No Potential	No Potential	No Potential	No Potential	Fresno: No Potential KCH: No Potential KCGW: No Potential KCGSE: No Potential KCGSW: No Potential

Attachment 2
 Special-Status Wildlife Species with Potential to Occur in the Project Vicinity

Scientific Name Common Name	Federal Status ^b	State Status ^c	Potential to Occur ^a							Heavy Maintenance Facilities ^d	
			BNSF Alternative	Hanford West Bypass (All)	Corcoran Elevated	Corcoran Bypass	Allensworth Bypass	Wasco-Shafter Bypass	Bakersfield South and Hybrid		
<i>Thamnophis gigas</i> GIANT GARTER SNAKE	T	T	No Potential	No Potential	No Potential	No Potential	No Potential	No Potential	No Potential	No Potential	Fresno: No Potential KCH: No Potential KCGW: No Potential KCGSE: No Potential KCGSW: No Potential
Birds											
<i>Agelaius tricolor</i> TRICOLORED BLACKBIRD	--	SSC	High	Moderate	Moderate	Moderate	Moderate	Moderate	Moderate	Moderate	Fresno: Moderate KCH: Moderate KCGW: Moderate KCGSE: Moderate KCGSW: Moderate
<i>Ammodramus savannarum</i> GRASSHOPPER SPARROW	--	SSC	Low	Low	Low	Low	Low	Low	Low	Low	Fresno: Low KCH: Low KCGW: Low KCGSE: Low KCGSW: Low
<i>Aphelocoma insularis</i> ISLAND SCRUB-JAY	BCC	--	No Potential	No Potential	No Potential	No Potential	No Potential	No Potential	No Potential	No Potential	Fresno: No Potential KCH: No Potential KCGW: No Potential KCGSE: No Potential KCGSW: No Potential

Attachment 2
 Special-Status Wildlife Species with Potential to Occur in the Project Vicinity

Scientific Name Common Name	Federal Status ^b	State Status ^c	Potential to Occur ^a							Heavy Maintenance Facilities ^d
			BNSF Alternative	Hanford West Bypass (All)	Corcoran Elevated	Corcoran Bypass	Allensworth Bypass	Wasco-Shafter Bypass	Bakersfield South and Hybrid	
<i>Aquila chrysaetos</i> GOLDEN EAGLE	--	FP	Moderate	Moderate	Moderate	Moderate	Moderate	Moderate	Moderate	Fresno: Moderate KCH: Moderate KCGW: Moderate KCGSE: Moderate KCGSW: Moderate
<i>Asio flammeus</i> SHORT-EARED OWL	--	SSC	Low	Low	No Potential	No Potential	Low	No Potential	No Potential	Fresno: No Potential KCH: No Potential KCGW: No Potential KCGSE: No Potential KCGSW: No Potential
<i>Asio otus</i> LONG-EARED OWL	--	SSC	Low	Low	Low	Low	Low	Low	Low	Fresno: Low KCH: Low KCGW: Low KCGSE: Low KCGSW: Low
<i>Athene cunicularia</i> WESTERN BURROWING OWL	--	SSC	High	High	High	High	High	High	High	Fresno: High KCH: High KCGW: High KCGSE: High KCGSW: High

Attachment 2
 Special-Status Wildlife Species with Potential to Occur in the Project Vicinity

Scientific Name Common Name	Federal Status ^b	State Status ^c	Potential to Occur ^a							Heavy Maintenance Facilities ^d
			BNSF Alternative	Hanford West Bypass (All)	Corcoran Elevated	Corcoran Bypass	Allensworth Bypass	Wasco-Shafter Bypass	Bakersfield South and Hybrid	
<i>Aythya americana</i> REDHEAD	--	SSC	High	Low	Moderate	High	Moderate	Low	Low	Fresno: Low KCH: Low KCGW: Low KCGSE: Low KCGSW: Low
<i>Baeolophus inornatus</i> OAK TITMOUSE	BCC	--	Moderate	Moderate	Moderate	Moderate	Moderate	Moderate	Moderate	Fresno: Moderate KCH: Moderate KCGW: Moderate KCGSE: Moderate KCGSW: Moderate
<i>Buteo swainsoni</i> SWAINSON'S HAWK	--	T	High	High	High	High	Moderate	Moderate	Moderate	Fresno: Moderate KCH: Moderate KCGW: Moderate KCGSE: Moderate KCGSW: Moderate
<i>Calidris canutus</i> RED KNOT (ROSELAARI SSP.)	BCC	--	No Potential	No Potential	No Potential	No Potential	No Potential	No Potential	No Potential	Fresno: No Potential KCH: No Potential KCGW: No Potential KCGSE: No Potential KCGSW: No Potential
<i>Calypte costae</i> COSTA'S HUMMINGBIRD	BCC	--	No Potential	No Potential	No Potential	No Potential	No Potential	No Potential	No Potential	Fresno: No Potential KCH: No Potential KCGW: No Potential KCGSE: No Potential KCGSW: No Potential

Attachment 2
 Special-Status Wildlife Species with Potential to Occur in the Project Vicinity

Scientific Name Common Name	Federal Status ^b	State Status ^c	Potential to Occur ^a								
			BNSF Alternative	Hanford West Bypass (All)	Corcoran Elevated	Corcoran Bypass	Allensworth Bypass	Wasco-Shafter Bypass	Bakersfield South and Hybrid	Heavy Maintenance Facilities ^d	
<i>Campylorhynchus brunneicapillus</i> CACTUS WREN	BCC	--	No Potential	No Potential	No Potential	No Potential	No Potential	No Potential	No Potential	No Potential	Fresno: No Potential KCH: No Potential KCGW: No Potential KCGSE: No Potential KCGSW: No Potential
<i>Carduelis lawrencei</i> LAWRENCE'S GOLDFINCH	BCC	--	No Potential	No Potential	No Potential	No Potential	No Potential	No Potential	No Potential	No Potential	Fresno: No Potential KCH: No Potential KCGW: No Potential KCGSE: No Potential KCGSW: No Potential
<i>Charadrius alexandrinus nivosus</i> WESTERN SNOWY PLOVER *INLAND POPULATION*	--	SSC	Moderate	Moderate	Moderate	Moderate	Moderate	Moderate	Moderate	No Potential	Fresno: No Potential KCH: No Potential KCGW: Moderate KCGSE: Moderate KCGSW: Low
<i>Charadrius montanus</i> MOUNTAIN PLOVER	--	SSC	Moderate	Moderate	No Potential	No Potential	Moderate	Low	Moderate	Moderate	Fresno: No Potential KCH: No Potential KCGW: Low KCGSE: Low KCGSW: Low

Attachment 2
 Special-Status Wildlife Species with Potential to Occur in the Project Vicinity

Scientific Name Common Name	Federal Status ^b	State Status ^c	Potential to Occur ^a							Heavy Maintenance Facilities ^d
			BNSF Alternative	Hanford West Bypass (All)	Corcoran Elevated	Corcoran Bypass	Allensworth Bypass	Wasco-Shafter Bypass	Bakersfield South and Hybrid	
<i>Chlidonias niger</i> BLACK TERN	--	SSC	Moderate	Moderate	No Potential	No Potential	Moderate	Moderate	Moderate	Fresno: No Potential KCH: No Potential KCGW: Moderate KCGSE: Moderate KCGSW: Moderate
<i>Circus cyaneus</i> NORTHERN HARRIER	--	SSC	High	High	Moderate	Moderate	Moderate	Moderate	Moderate	Fresno: Moderate KCH: Moderate KCGW: Moderate KCGSE: Moderate KCGSW: Moderate
<i>Coccyzus americanus occidentalis</i> WESTERN YELLOW-BILLED CUCKOO	C	E	No Potential	No Potential	No Potential	No Potential	No Potential	No Potential	No Potential	Fresno: No Potential KCH: No Potential KCGW: No Potential KCGSE: No Potential KCGSW: No Potential
<i>Coturnicops noveboracensis</i> YELLOW RAIL	BCC	SSC	Moderate	Moderate	No Potential	No Potential	Moderate	No Potential	No Potential	Fresno: No Potential KCH: No Potential KCGW: No Potential KCGSE: No Potential KCGSW: No Potential
<i>Cypseloides niger</i> BLACK SWIFT	--	SSC	No Potential	No Potential	No Potential	No Potential	No Potential	No Potential	No Potential	Fresno: No Potential KCH: No Potential KCGW: No Potential KCGSE: No Potential KCGSW: No Potential

Attachment 2
 Special-Status Wildlife Species with Potential to Occur in the Project Vicinity

Scientific Name Common Name	Federal Status ^b	State Status ^c	Potential to Occur ^a							Heavy Maintenance Facilities ^d	
			BNSF Alternative	Hanford West Bypass (All)	Corcoran Elevated	Corcoran Bypass	Allensworth Bypass	Wasco-Shafter Bypass	Bakersfield South and Hybrid		
<i>Dendragapus fuliginosus howardi</i> MOUNT PINOS SOOTY GROUSE	--	SSC	No Potential	No Potential	No Potential	No Potential	No Potential	No Potential	No Potential	No Potential	Fresno: No Potential KCH: No Potential KCGW: No Potential KCGSE: No Potential KCGSW: No Potential
<i>Dendrocygna bicolor</i> FULVOUS WHISTLING-DUCK	--	SSC	Moderate	Low	Low	Low	Moderate	Low	Moderate	Fresno: No Potential KCH: No Potential KCGW: No Potential KCGSE: No Potential KCGSW: No Potential	
<i>Dendroica petechia brewsteri</i> YELLOW WARBLER	--	SSC	Moderate	Moderate	Low	Low	Low	Low	Moderate	Fresno: Low KCH: Low KCGW: Low KCGSE: Low KCGSW: Low	
<i>Elanus leucurus</i> WHITE-TAILED KITE	--	FP	Moderate	Moderate	Moderate	Moderate	Moderate	Moderate	Moderate	Fresno: Moderate KCH: Moderate KCGW: Moderate KCGSE: Moderate KCGSW: Moderate	

Attachment 2
 Special-Status Wildlife Species with Potential to Occur in the Project Vicinity

Scientific Name Common Name	Federal Status ^b	State Status ^c	Potential to Occur ^a							Heavy Maintenance Facilities ^d	
			BNSF Alternative	Hanford West Bypass (All)	Corcoran Elevated	Corcoran Bypass	Allensworth Bypass	Wasco-Shafter Bypass	Bakersfield South and Hybrid		
<i>Empidonax trillii extimus</i> SOUTHWESTERN WILLOW FLYCATCHER	E	E	No Potential	No Potential	No Potential	No Potential	No Potential	No Potential	No Potential	No Potential	Fresno: No Potential KCH: No Potential KCGW: No Potential KCGSE: No Potential KCGSW: No Potential
<i>Falco peregrinus anatum</i> AMERICAN PEREGRINE FALCON	Delisted	E/FP	Moderate	Moderate	Moderate	Moderate	Moderate	Moderate	Moderate	Moderate	Fresno: Moderate KCH: Moderate KCGW: Moderate KCGSE: Moderate KCGSW: Moderate
<i>Geothlypis trichas</i> COMMON YELLOWTHROAT (SINUOSA SSP.)	BCC	--	No Potential	No Potential	No Potential	No Potential	No Potential	No Potential	No Potential	No Potential	Fresno: No Potential KCH: No Potential KCGW: No Potential KCGSE: No Potential KCGSW: No Potential
<i>Grus canadensis canadensis</i> LESSER SANDHILL CRANE	--	SSC	High	Moderate	Moderate	Moderate	High	Moderate	Moderate	Moderate	Fresno: Low KCH: Low KCGW: Low KCGSE: Low KCGSW: Low
<i>Grus canadensis tabida</i> GREATER SANDHILL CRANE	--	T/FP	High	Moderate	Moderate	Moderate	High	Moderate	Moderate	Moderate	Fresno: Low KCH: Low KCGW: Low KCGSE: Low KCGSW: Low

Attachment 2
 Special-Status Wildlife Species with Potential to Occur in the Project Vicinity

Scientific Name Common Name	Federal Status ^b	State Status ^c	Potential to Occur ^a							Heavy Maintenance Facilities ^d	
			BNSF Alternative	Hanford West Bypass (All)	Corcoran Elevated	Corcoran Bypass	Allensworth Bypass	Wasco-Shafter Bypass	Bakersfield South and Hybrid		
<i>Gymnogyps californianus</i> CALIFORNIA CONDOR	E□	E/FP	No Potential	No Potential	No Potential	No Potential	No Potential	No Potential	No Potential	No Potential	Fresno: No Potential KCH: No Potential KCGW: No Potential KCGSE: No Potential KCGSW: No Potential
<i>Haematopus bachmani</i> BLACK OYSTERCATCHER	BCC	--	No Potential	No Potential	No Potential	No Potential	No Potential	No Potential	No Potential	No Potential	Fresno: No Potential KCH: No Potential KCGW: No Potential KCGSE: No Potential KCGSW: No Potential
<i>Haliaeetus leucocephalus</i> BALD EAGLE	Delisted	E/FP	Moderate	Moderate	Moderate	Moderate	Moderate	Moderate	Moderate	Moderate	Fresno: Moderate KCH: Moderate KCGW: Moderate KCGSE: Moderate KCGSW: Moderate
<i>Icteria virens</i> YELLOW-BREASTED CHAT	--	SSC	Low	Low	Low	Low	Low	Low	Low	Low	Fresno: Low KCH: Low KCGW: Low KCGSE: Low KCGSW: Low

Attachment 2
 Special-Status Wildlife Species with Potential to Occur in the Project Vicinity

Scientific Name Common Name	Federal Status ^b	State Status ^c	Potential to Occur ^a							Heavy Maintenance Facilities ^d
			BNSF Alternative	Hanford West Bypass (All)	Corcoran Elevated	Corcoran Bypass	Allensworth Bypass	Wasco-Shafter Bypass	Bakersfield South and Hybrid	
<i>Ixobrychus exilis</i> LEAST BITTERN	--	SSC	Moderate	Low	Low	Moderate	Moderate	Low	Low	Fresno: Low KCH: Low KCGW: Low KCGSE: Low KCGSW: Low
<i>Lanius ludovicianus</i> LOGGERHEAD SHRIKE	--	SSC	Moderate	High	Moderate	Moderate	High	Moderate	Moderate	Fresno: Moderate KCH: Moderate KCGW: Moderate KCGSE: Moderate KCGSW: Moderate
<i>Laterallus jamaicensis</i> BLACK RAIL	BCC	SSC	No Potential	No Potential	No Potential	No Potential	No Potential	No Potential	No Potential	Fresno: No Potential KCH: No Potential KCGW: No Potential KCGSE: No Potential KCGSW: No Potential
<i>Limnodromus griseus</i> SHORT-BILLED DOWITCHER	BCC	--	No Potential	No Potential	No Potential	No Potential	No Potential	No Potential	No Potential	Fresno: No Potential KCH: No Potential KCGW: No Potential KCGSE: No Potential KCGSW: No Potential
<i>Limosa fedoa</i> MARBLED GODWIT	BCC	--	No Potential	No Potential	No Potential	No Potential	No Potential	No Potential	No Potential	Fresno: No Potential KCH: No Potential KCGW: No Potential KCGSE: No Potential KCGSW: No Potential

Attachment 2
 Special-Status Wildlife Species with Potential to Occur in the Project Vicinity

Scientific Name Common Name	Federal Status ^b	State Status ^c	Potential to Occur ^a							Heavy Maintenance Facilities ^d
			BNSF Alternative	Hanford West Bypass (All)	Corcoran Elevated	Corcoran Bypass	Allensworth Bypass	Wasco-Shafter Bypass	Bakersfield South and Hybrid	
<i>Melanerpes lewis</i> LEWIS'S WOODPECKER	BCC	--	Low	Low	Low	Low	Low	Low	Low	Fresno: Low KCH: Low KCGW: Low KCGSE: Low KCGSW: Low
<i>Melospiza melodia</i> SONG SPARROW (GRAMINEA SSP.)	BCC	SSC	No Potential	No Potential	No Potential	No Potential	No Potential	No Potential	No Potential	Fresno: No Potential KCH: No Potential KCGW: No Potential KCGSE: No Potential KCGSW: No Potential
<i>Melospiza melodia</i> SONG SPARROW (MAXILLARIS SSP.)	BCC	SSC	No Potential	No Potential	No Potential	No Potential	No Potential	No Potential	No Potential	Fresno: No Potential KCH: No Potential KCGW: No Potential KCGSE: No Potential KCGSW: No Potential
<i>Melospiza melodia</i> SONG SPARROW (PUSILLULA SSP.)	BCC	SSC	No Potential	No Potential	No Potential	No Potential	No Potential	No Potential	No Potential	Fresno: No Potential KCH: No Potential KCGW: No Potential KCGSE: No Potential KCGSW: No Potential

Attachment 2
 Special-Status Wildlife Species with Potential to Occur in the Project Vicinity

Scientific Name Common Name	Federal Status ^b	State Status ^c	Potential to Occur ^a							Heavy Maintenance Facilities ^d	
			BNSF Alternative	Hanford West Bypass (All)	Corcoran Elevated	Corcoran Bypass	Allensworth Bypass	Wasco-Shafter Bypass	Bakersfield South and Hybrid		
<i>Melospiza melodia</i> SONG SPARROW (SAMUELIS SSP.)	BCC	SSC	No Potential	No Potential	No Potential	No Potential	No Potential	No Potential	No Potential	No Potential	Fresno: No Potential KCH: No Potential KCGW: No Potential KCGSE: No Potential KCGSW: No Potential
<i>Numenius americanus</i> LONG-BILLED CURLEW	BCC	--	Moderate	Moderate	Moderate	Moderate	Moderate	Moderate	Moderate	Moderate	Fresno: Moderate KCH: Moderate KCGW: Moderate KCGSE: Moderate KCGSW: Moderate
<i>Numenius phaeopus</i> WHIMBREL	BCC	--	No Potential	No Potential	No Potential	No Potential	No Potential	No Potential	No Potential	No Potential	Fresno: No Potential KCH: No Potential KCGW: No Potential KCGSE: No Potential KCGSW: No Potential
<i>Oceanodroma homochroa</i> ASHY STORM-PETREL	BCC	SSC	No Potential	No Potential	No Potential	No Potential	No Potential	No Potential	No Potential	No Potential	Fresno: No Potential KCH: No Potential KCGW: No Potential KCGSE: No Potential KCGSW: No Potential
<i>Otus flammeolus</i> FLAMMULATED OWL	BCC	--	No Potential	No Potential	No Potential	No Potential	No Potential	No Potential	No Potential	No Potential	Fresno: No Potential KCH: No Potential KCGW: No Potential KCGSE: No Potential KCGSW: No Potential

Attachment 2
 Special-Status Wildlife Species with Potential to Occur in the Project Vicinity

Scientific Name Common Name	Federal Status ^b	State Status ^c	Potential to Occur ^a								
			BNSF Alternative	Hanford West Bypass (All)	Corcoran Elevated	Corcoran Bypass	Allensworth Bypass	Wasco-Shafter Bypass	Bakersfield South and Hybrid	Heavy Maintenance Facilities ^d	
<i>Passerculus sandwichensis beldingi</i> BELDING'S SAVANNAH SPARROW	--	E	No Potential	No Potential	No Potential	No Potential	No Potential	No Potential	No Potential	No Potential	Fresno: No Potential KCH: No Potential KCGW: No Potential KCGSE: No Potential KCGSW: No Potential
<i>Pelecanus erythrorhynchos</i> AMERICAN WHITE PELICAN	--	SSC	No Potential	No Potential	No Potential	No Potential	No Potential	No Potential	No Potential	No Potential	Fresno: No Potential KCH: No Potential KCGW: No Potential KCGSE: No Potential KCGSW: No Potential
<i>Phoebastria nigripes</i> BLACK-FOOTED ALBATROSS	BCC	--	No Potential	No Potential	No Potential	No Potential	No Potential	No Potential	No Potential	No Potential	Fresno: No Potential KCH: No Potential KCGW: No Potential KCGSE: No Potential KCGSW: No Potential
<i>Pica nuttalli</i> YELLOW-BILLED MAGPIE	BCC	--	Low	No Potential	No Potential	No Potential	No Potential	No Potential	No Potential	No Potential	Fresno: No Potential KCH: No Potential KCGW: No Potential KCGSE: No Potential KCGSW: No Potential

Attachment 2
 Special-Status Wildlife Species with Potential to Occur in the Project Vicinity

Scientific Name Common Name	Federal Status ^b	State Status ^c	Potential to Occur ^a							Heavy Maintenance Facilities ^d	
			BNSF Alternative	Hanford West Bypass (All)	Corcoran Elevated	Corcoran Bypass	Allensworth Bypass	Wasco-Shafter Bypass	Bakersfield South and Hybrid		
<i>Picoides albolarvatus</i> WHITE-HEADED WOODPECKER	BCC	--	No Potential	No Potential	No Potential	No Potential	No Potential	No Potential	No Potential	No Potential	Fresno: No Potential KCH: No Potential KCGW: No Potential KCGSE: No Potential KCGSW: No Potential
<i>Picoides nuttallii</i> NUTTALL'S WOODPECKER	BCC	--	Moderate	Moderate	Low	Low	Low	Low	Low	Low	Fresno: Low KCH: Low KCGW: Low KCGSE: Low KCGSW: Low
<i>Pipilo maculatus</i> SPOTTED TOWHEE (CLEMENTAE SSP.)	BCC	SSC	No Potential	No Potential	No Potential	No Potential	No Potential	No Potential	No Potential	No Potential	Fresno: No Potential KCH: No Potential KCGW: No Potential KCGSE: No Potential KCGSW: No Potential
<i>Pooecetes gramineus affinis</i> OREGON VESPER SPARROW	--	SSC	Moderate	Moderate	Moderate	Moderate	Moderate	Moderate	Moderate	Moderate	Fresno: Moderate KCH: Moderate KCGW: Moderate KCGSE: Moderate KCGSW: Moderate
<i>Progne subis</i> PURPLE MARTIN	--	SSC	Low	Low	Low	Low	Low	Low	Low	Low	Fresno: Low KCH: Low KCGW: Low KCGSE: Low KCGSW: Low

Attachment 2
 Special-Status Wildlife Species with Potential to Occur in the Project Vicinity

Scientific Name Common Name	Federal Status ^b	State Status ^c	Potential to Occur ^a							Heavy Maintenance Facilities ^d	
			BNSF Alternative	Hanford West Bypass (All)	Corcoran Elevated	Corcoran Bypass	Allensworth Bypass	Wasco-Shafter Bypass	Bakersfield South and Hybrid		
<i>Ptychoramphus aleuticus</i> CASSIN'S AUKLET	BCC	SSC	No Potential	No Potential	No Potential	No Potential	No Potential	No Potential	No Potential	No Potential	Fresno: No Potential KCH: No Potential KCGW: No Potential KCGSE: No Potential KCGSW: No Potential
<i>Puffinus creatopus</i> PINK-FOOTED SHEARWATER	BCC	--	No Potential	No Potential	No Potential	No Potential	No Potential	No Potential	No Potential	No Potential	Fresno: No Potential KCH: No Potential KCGW: No Potential KCGSE: No Potential KCGSW: No Potential
<i>Puffinus opisthomelas</i> BLACK-VENTED SHEARWATER	BCC	--	No Potential	No Potential	No Potential	No Potential	No Potential	No Potential	No Potential	No Potential	Fresno: No Potential KCH: No Potential KCGW: No Potential KCGSE: No Potential KCGSW: No Potential
<i>Rynchops niger</i> BLACK SKIMMER	BCC	SSC	No Potential	No Potential	No Potential	No Potential	No Potential	No Potential	No Potential	No Potential	Fresno: No Potential KCH: No Potential KCGW: No Potential KCGSE: No Potential KCGSW: No Potential

Attachment 2
 Special-Status Wildlife Species with Potential to Occur in the Project Vicinity

Scientific Name Common Name	Federal Status ^b	State Status ^c	Potential to Occur ^a							Heavy Maintenance Facilities ^d	
			BNSF Alternative	Hanford West Bypass (All)	Corcoran Elevated	Corcoran Bypass	Allensworth Bypass	Wasco-Shafter Bypass	Bakersfield South and Hybrid		
<i>Selasphorus sasin</i> ALLEN'S HUMMINGBIRD	BCC	--	No Potential	No Potential	No Potential	No Potential	No Potential	No Potential	No Potential	No Potential	Fresno: No Potential KCH: No Potential KCGW: No Potential KCGSE: No Potential KCGSW: No Potential
<i>Spizella atrogularis</i> BLACK-CHINNED SPARROW	BCC	--	No Potential	No Potential	No Potential	No Potential	No Potential	No Potential	No Potential	No Potential	Fresno: No Potential KCH: No Potential KCGW: No Potential KCGSE: No Potential KCGSW: No Potential
<i>Sterna nilotica</i> GULL-BILLED TERN	BCC	SSC	No Potential	No Potential	No Potential	No Potential	No Potential	No Potential	No Potential	No Potential	Fresno: No Potential KCH: No Potential KCGW: No Potential KCGSE: No Potential KCGSW: No Potential
<i>Strix occidentalis</i> SPOTTED OWL (OCCIDENTALIS SSP.)	BCC	SSC	No Potential	No Potential	No Potential	No Potential	No Potential	No Potential	No Potential	No Potential	Fresno: No Potential KCH: No Potential KCGW: No Potential KCGSE: No Potential KCGSW: No Potential
<i>Synthliboramphus hypoleucus</i> XANTUS'S MURRELET	C/BCC	T	No Potential	No Potential	No Potential	No Potential	No Potential	No Potential	No Potential	No Potential	Fresno: No Potential KCH: No Potential KCGW: No Potential KCGSE: No Potential KCGSW: No Potential

Attachment 2
 Special-Status Wildlife Species with Potential to Occur in the Project Vicinity

Scientific Name Common Name	Federal Status ^b	State Status ^c	Potential to Occur ^a							Heavy Maintenance Facilities ^d
			BNSF Alternative	Hanford West Bypass (All)	Corcoran Elevated	Corcoran Bypass	Allensworth Bypass	Wasco-Shafter Bypass	Bakersfield South and Hybrid	
<i>Toxostoma lecontei</i> LE CONTE'S THRASHER	--	SSC	Moderate	Moderate	No Potential	No Potential	Moderate	Moderate	Moderate	Fresno: No Potential KCH: No Potential KCGW: Low KCGSE: Low KCGSW: Low
<i>Vireo bellii pusillus</i> LEAST BELL'S VIREO	E	E	No Potential	No Potential	No Potential	No Potential	No Potential	No Potential	No Potential	Fresno: No Potential KCH: No Potential KCGW: No Potential KCGSE: No Potential KCGSW: No Potential
<i>Xanthocephalus xanthocephalus</i> YELLOW-HEADED BLACKBIRD	--	SSC	Moderate	Moderate	Moderate	Moderate	Moderate	Moderate	Moderate	Fresno: Moderate KCH: Moderate KCGW: Moderate KCGSE: Moderate KCGSW: Moderate
Mammals										
<i>Ammospermophilus nelsoni</i> NELSON'S (SAN JOAQUIN) ANTELOPE SQUIRREL	--	T	High	No Potential	No Potential	No Potential	High	Moderate	Moderate	Fresno: No Potential KCH: No Potential KCGW: Low KCGSE: Moderate KCGSW: Low

Attachment 2
 Special-Status Wildlife Species with Potential to Occur in the Project Vicinity

Scientific Name Common Name	Federal Status ^b	State Status ^c	Potential to Occur ^a							Heavy Maintenance Facilities ^d	
			BNSF Alternative	Hanford West Bypass (All)	Corcoran Elevated	Corcoran Bypass	Allensworth Bypass	Wasco-Shafter Bypass	Bakersfield South and Hybrid		
<i>Antrozous pallidus</i> PALLID BAT	--	SSC	Moderate	Moderate	Moderate	Moderate	Moderate	Moderate	Moderate	Moderate	Fresno: Moderate KCH: Moderate KCGW: Moderate KCGSE: Moderate KCGSW: Moderate
<i>Bassariscus astutus</i> RINGTAIL	--	FP	High	No Potential	No Potential	No Potential	No Potential	No Potential	No Potential	High	Fresno: No Potential KCH: No Potential KCGW: No Potential KCGSE: No Potential KCGSW: No Potential
<i>Chaetodipus californicus femoralis</i> DULZURA POCKET MOUSE	--	SSC	Moderate	No Potential	No Potential	No Potential	Moderate	No Potential	No Potential	No Potential	Fresno: No Potential KCH: No Potential KCGW: Low KCGSE: Moderate KCGSW: Low
<i>Corynorhinus townsendii</i> TOWNSEND'S BIG-EARED BAT	--	SSC	Moderate	Moderate	Moderate	Moderate	Moderate	Moderate	Moderate	Moderate	Fresno: Moderate KCH: Moderate KCGW: Moderate KCGSE: Moderate KCGSW: Moderate

Attachment 2
 Special-Status Wildlife Species with Potential to Occur in the Project Vicinity

Scientific Name Common Name	Federal Status ^b	State Status ^c	Potential to Occur ^a							Heavy Maintenance Facilities ^d	
			BNSF Alternative	Hanford West Bypass (All)	Corcoran Elevated	Corcoran Bypass	Allensworth Bypass	Wasco-Shafter Bypass	Bakersfield South and Hybrid		
<i>Dipodomys ingens</i> GIANT KANGAROO RAT	E	E	No Potential	No Potential	No Potential	No Potential	No Potential	No Potential	No Potential	No Potential	Fresno: No Potential KCH: No Potential KCGW: No Potential KCGSE: No Potential KCGSW: No Potential
<i>Dipodomys nitratooides brevinasus</i> SHORT-NOSED KANGAROO RAT	--	SSC	No Potential	No Potential	No Potential	No Potential	No Potential	No Potential	No Potential	No Potential	Fresno: No Potential KCH: No Potential KCGW: No Potential KCGSE: No Potential KCGSW: No Potential
<i>Dipodomys nitratooides exilis</i> FRESNO KANGAROO RAT	E	E	Low	Low	No Potential	No Potential	No Potential	No Potential	No Potential	No Potential	Fresno: Low KCH: No Potential KCGW: No Potential KCGSE: No Potential KCGSW: No Potential
<i>Dipodomys nitratooides nitratooides</i> TIPTON KANGAROO RAT	E	E	High	No Potential	No Potential	No Potential	High	Moderate	Moderate	Moderate	Fresno: No Potential KCH: Moderate KCGW: Low KCGSE: Moderate KCGSW: Low

Attachment 2
 Special-Status Wildlife Species with Potential to Occur in the Project Vicinity

Scientific Name Common Name	Federal Status ^b	State Status ^c	Potential to Occur ^a							Heavy Maintenance Facilities ^d	
			BNSF Alternative	Hanford West Bypass (All)	Corcoran Elevated	Corcoran Bypass	Allensworth Bypass	Wasco-Shafter Bypass	Bakersfield South and Hybrid		
<i>Euderma maculatum</i> SPOTTED BAT	--	SSC	No Potential	No Potential	No Potential	No Potential	No Potential	No Potential	No Potential	No Potential	Fresno: No Potential KCH: No Potential KCGW: No Potential KCGSE: No Potential KCGSW: No Potential
<i>Eumops perotis californicus</i> WESTERN MASTIFF BAT	--	SSC	Moderate	No Potential	No Potential	No Potential	No Potential	Moderate	Moderate	Moderate	Fresno: Moderate KCH: Moderate KCGW: Moderate KCGSE: Moderate KCGSW: Moderate
<i>Lasiurus blossevillei</i> WESTERN RED BAT	--	SSC	Moderate	Moderate	Moderate	Moderate	Moderate	Moderate	Moderate	Moderate	Fresno: Moderate KCH: Moderate KCGW: Moderate KCGSE: Moderate KCGSW: Moderate
<i>Onychomys torridus ramona</i> SOUTHERN GRASSHOPPER MOUSE	--	SSC	No Potential	No Potential	No Potential	No Potential	No Potential	No Potential	No Potential	No Potential	Fresno: No Potential KCH: No Potential KCGW: No Potential KCGSE: No Potential KCGSW: No Potential
<i>Onychomys torridus tularensis</i> TULARE GRASSHOPPER MOUSE	--	SSC	Moderate	Moderate	Low	Moderate	Moderate	Moderate	Moderate	Moderate	Fresno: Moderate KCH: Moderate KCGW: Low KCGSE: Moderate KCGSW: Low

Attachment 2
 Special-Status Wildlife Species with Potential to Occur in the Project Vicinity

Scientific Name Common Name	Federal Status ^b	State Status ^c	Potential to Occur ^a							Heavy Maintenance Facilities ^d	
			BNSF Alternative	Hanford West Bypass (All)	Corcoran Elevated	Corcoran Bypass	Allensworth Bypass	Wasco-Shafter Bypass	Bakersfield South and Hybrid		
<i>Sorex ornatus relictus</i> BUENA VISTA LAKE SHREW	E	SSC	No Potential	No Potential	No Potential	No Potential	No Potential	No Potential	No Potential	No Potential	Fresno: No Potential KCH: No Potential KCGW: No Potential KCGSE: No Potential KCGSW: No Potential
<i>Taxidea taxus</i> AMERICAN BADGER	--	SSC	High	Moderate	Moderate	Moderate	High	Moderate	Moderate	Moderate	Fresno: Moderate KCH: Moderate KCGW: Low KCGSE: Moderate KCGSW: Low
<i>Vulpes macrotis mutica</i> SAN JOAQUIN KIT FOX	E	T	High	High	High	Moderate	High	Moderate	High	High	Fresno: Low KCH: Moderate KCGW: Moderate KCGSE: High KCGSW: High

Notes:

-- = No status designation.

^a **Basis for Potential to Occur Determination:**

No Potential = Outside of species' historical range or inside of the species' historical range, but outside of the species' present range.

Low = Inside of the species' present range, but no suitable habitat is present within the project footprint OR

Inside of the species' present range and suitable habitat is/is not present, but species is considered extirpated OR

Inside of the species' present range and suitable habitat is present but urbanization (e.g. city of Fresno) is expected to preclude the species' presence

Moderate = Inside of the species' historical and present range and suitable habitat is present

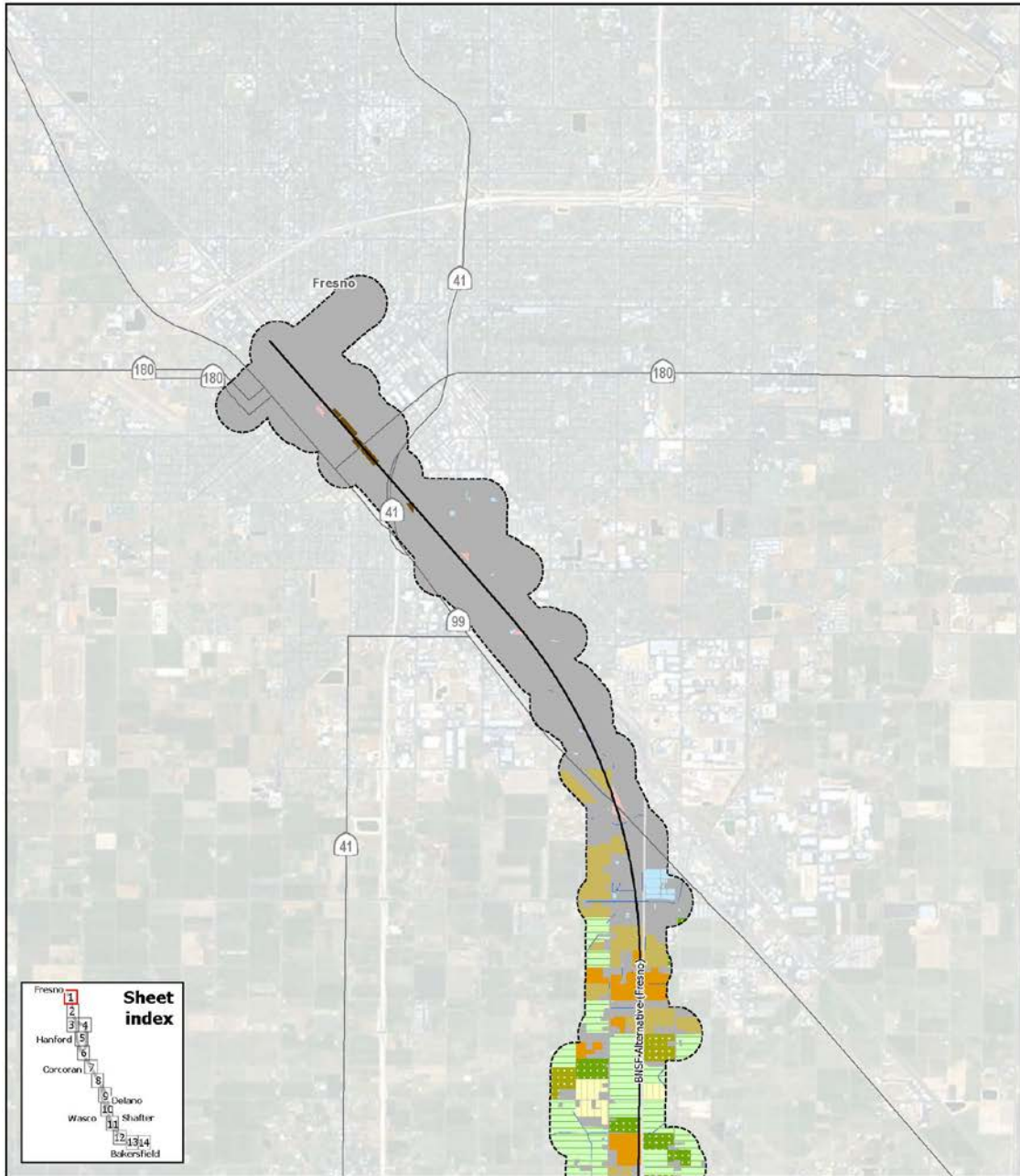
High = Inside of the species' historical and present range and CNDDDB observation/URS observation/state and/or federal wildlife preserves and refuges adjacent to or inside the footprint OR

In the case of bird species, inside of the species' historical and present range and CNDDDB observation/URS *nesting* observation/state and appropriate federal wildlife preserves and refuges adjacent to or inside the footprint

Attachment 2
 Special-Status Wildlife Species with Potential to Occur in the Project Vicinity

Scientific Name Common Name	Federal Status ^b	State Status ^c	Potential to Occur ^a							
			BNSF Alternative	Hanford West Bypass (All)	Corcoran Elevated	Corcoran Bypass	Allensworth Bypass	Wasco-Shafter Bypass	Bakersfield South and Hybrid	Heavy Maintenance Facilities ^d
<p>^b Federal status: E (Endangered) = Listed as endangered under Federal ESA. T (Threatened) = Listed as threatened under the Federal ESA. BCC (Birds of Conservation Concern) C (Candidate) = Listed as candidate under the Federal ESA. D (Designated) = Critical Habitat designated under the federal ESA</p> <p>^c State status: E (Endangered) = Listed as endangered under the CESA. T (Threatened) = Listed as threatened under the CESA. R (Rare) = Listed as rare under the CESA FP (Fully Protected) = Classified as fully protected by CDFG SSC (California Species of Special Concern) = Listed as a Species of Special Concern by CDFG</p> <p>^d Heavy Maintenance Facility (HMF) Alternatives: Fresno: Fresno Works–Fresno HMF Site KCH: Kings County–Hanford HMF Site KCGW: Kern Council of Governments–Wasco HMF Site KCGSE: Kern Council of Governments–Shafter East HMF Site KCGSW: Kern Council of Governments–Shafter West HMF Site</p> <p>^e The coast horned lizard was observed in the Allensworth Bypass Alternative during the 2010 field surveys; due to these observations, the species’ range has been extended beyond the range map provided by the CWHR to include both the Corcoran Elevated, Corcoran Bypass, and Allensworth Bypass alternatives because of the presence of natural habitat areas in these alternatives.</p> <p>^f The potential for western pond turtle was determined as follows: Moderate = RIV+(AGS, FEW, LAC, PAS, URB, VRI) and within the species’ range; Low = AGS, FEW, LAC, PAS, and URB and within the species’ range. Source: USFWS 1998, 2005, and 2008.</p>										

Attachment 3



Data source: URS/HMM/Arup JV, 2013.
 Image source: ESRI

November 20, 2013

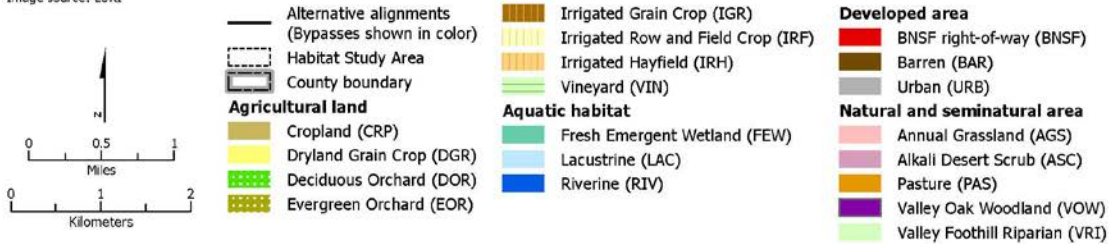
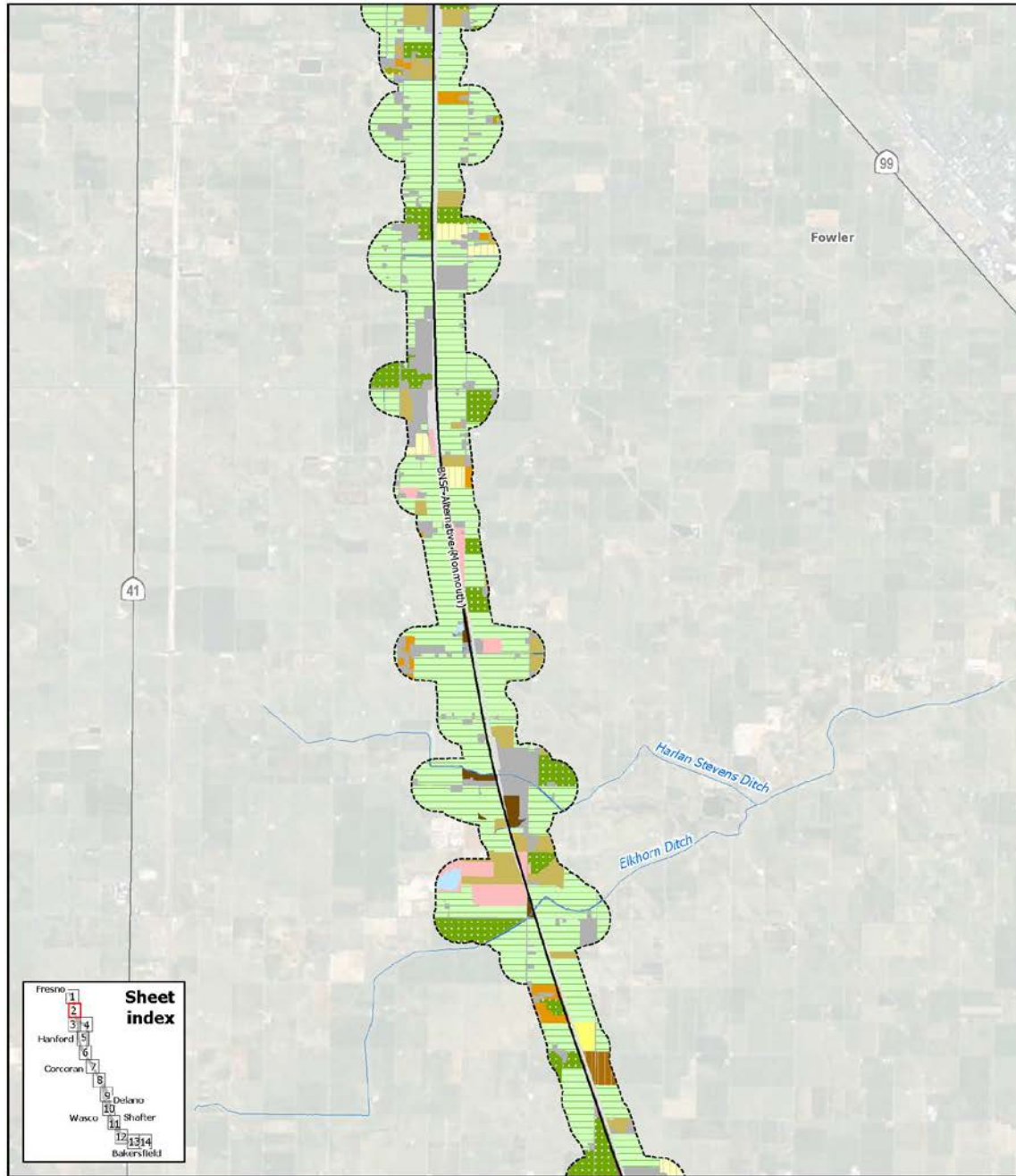


Figure A3-1a
 Observed Habitats within the Habitat Study Area



Data source: URS/HMM/Arup JV, 2013.
 Image source: ESRI

November 20, 2013

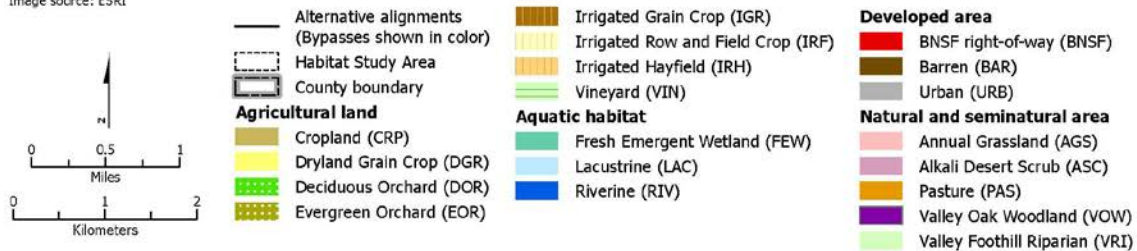
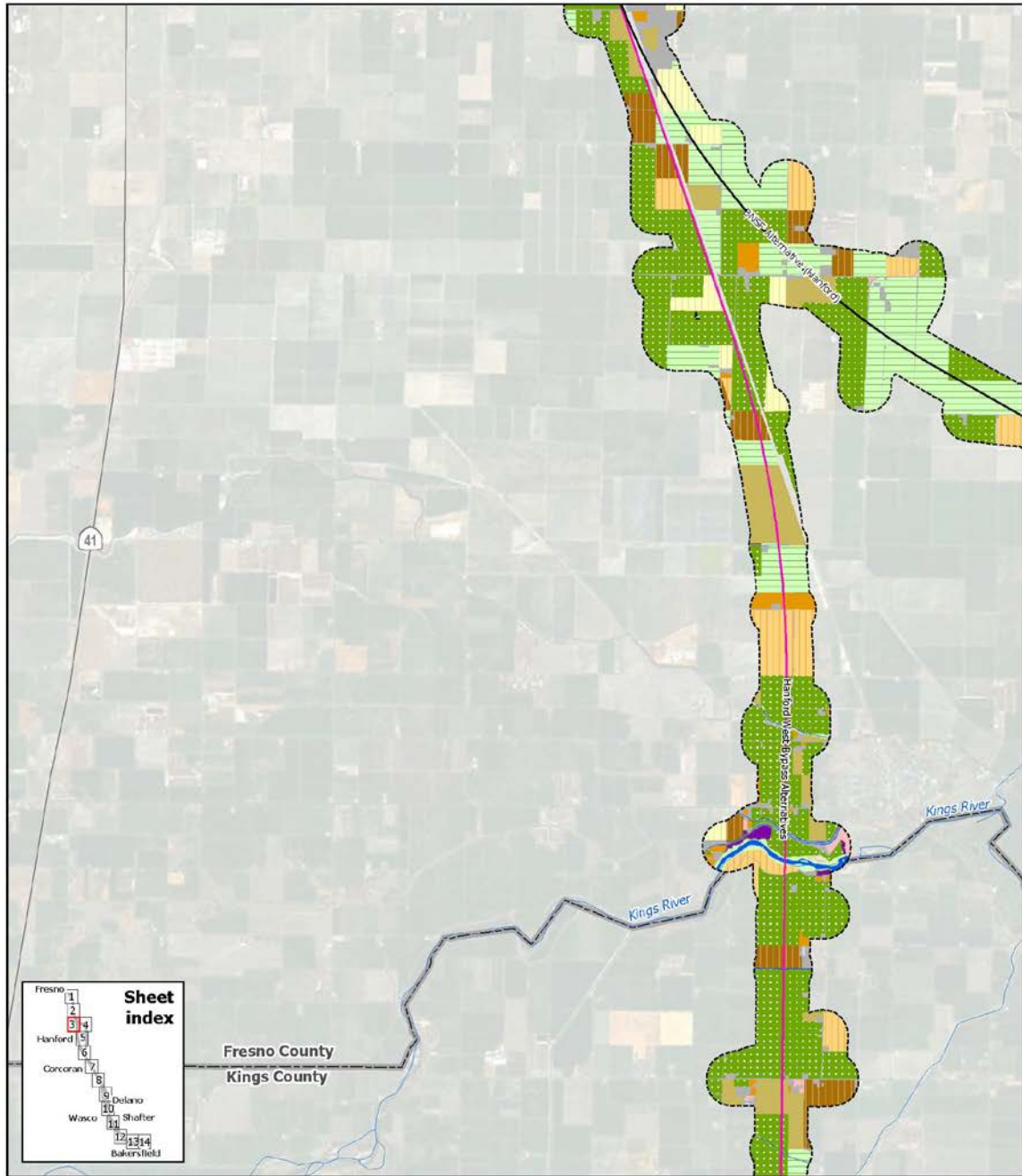


Figure A3-1b
 Observed Habitats within the Habitat Study Area



Data source: URS/HMM/Arup JV, 2013.
 Image source: ESRI

November 20, 2013

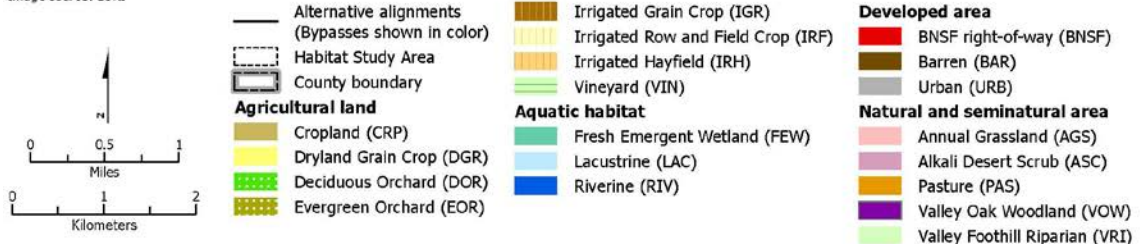
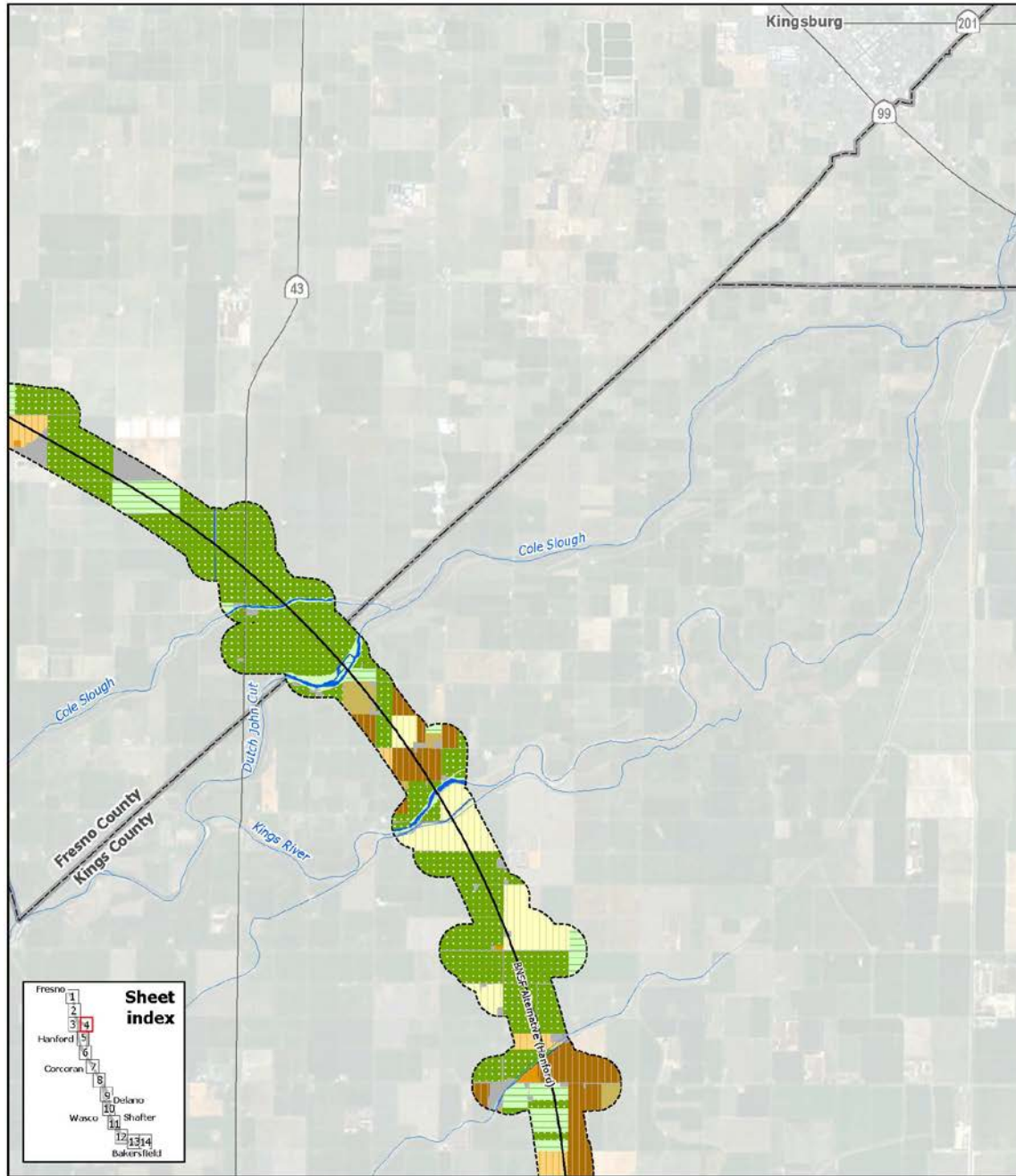


Figure A3-1c
 Observed Habitats within the Habitat Study Area



Data source: URS/HMM/Arup JV, 2013.
 Image source: ESRI

November 20, 2013

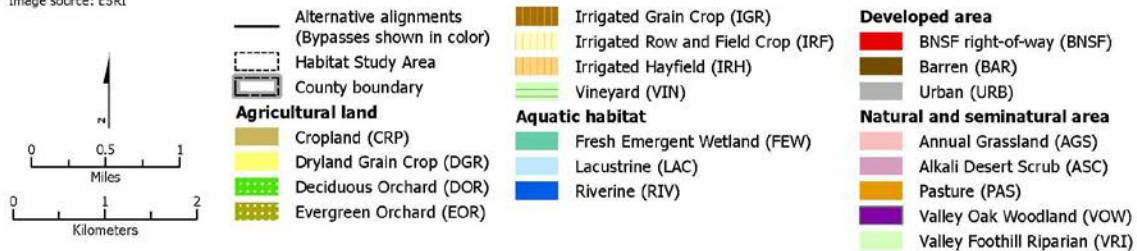
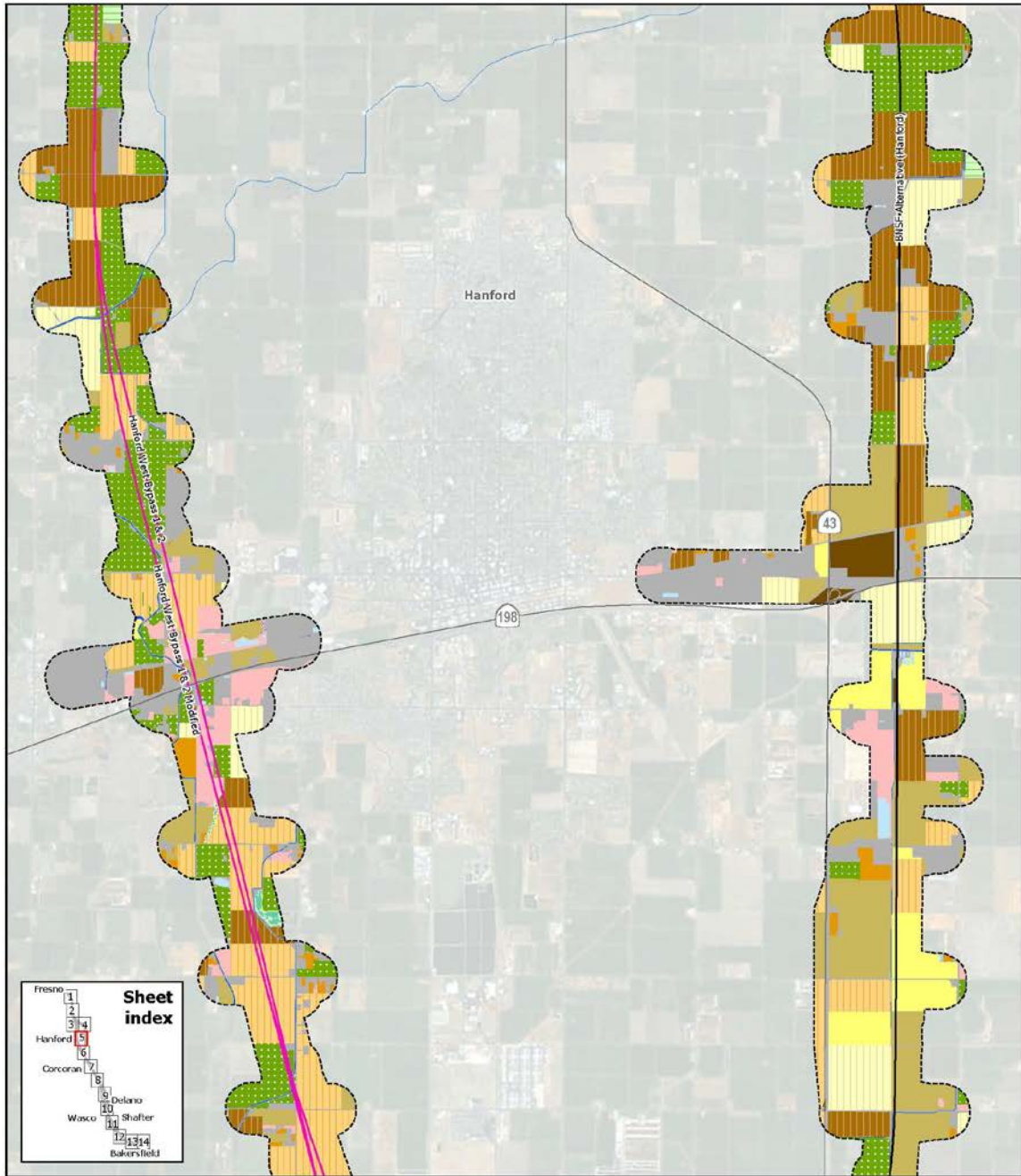


Figure A3-1d
 Observed Habitats within the Habitat Study Area



Data source: URS/HMM/Arup JV, 2013.
 Image source: ESRI

November 20, 2013

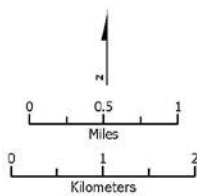
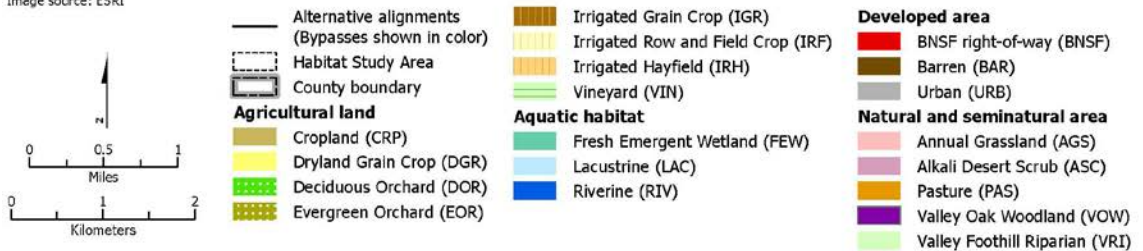
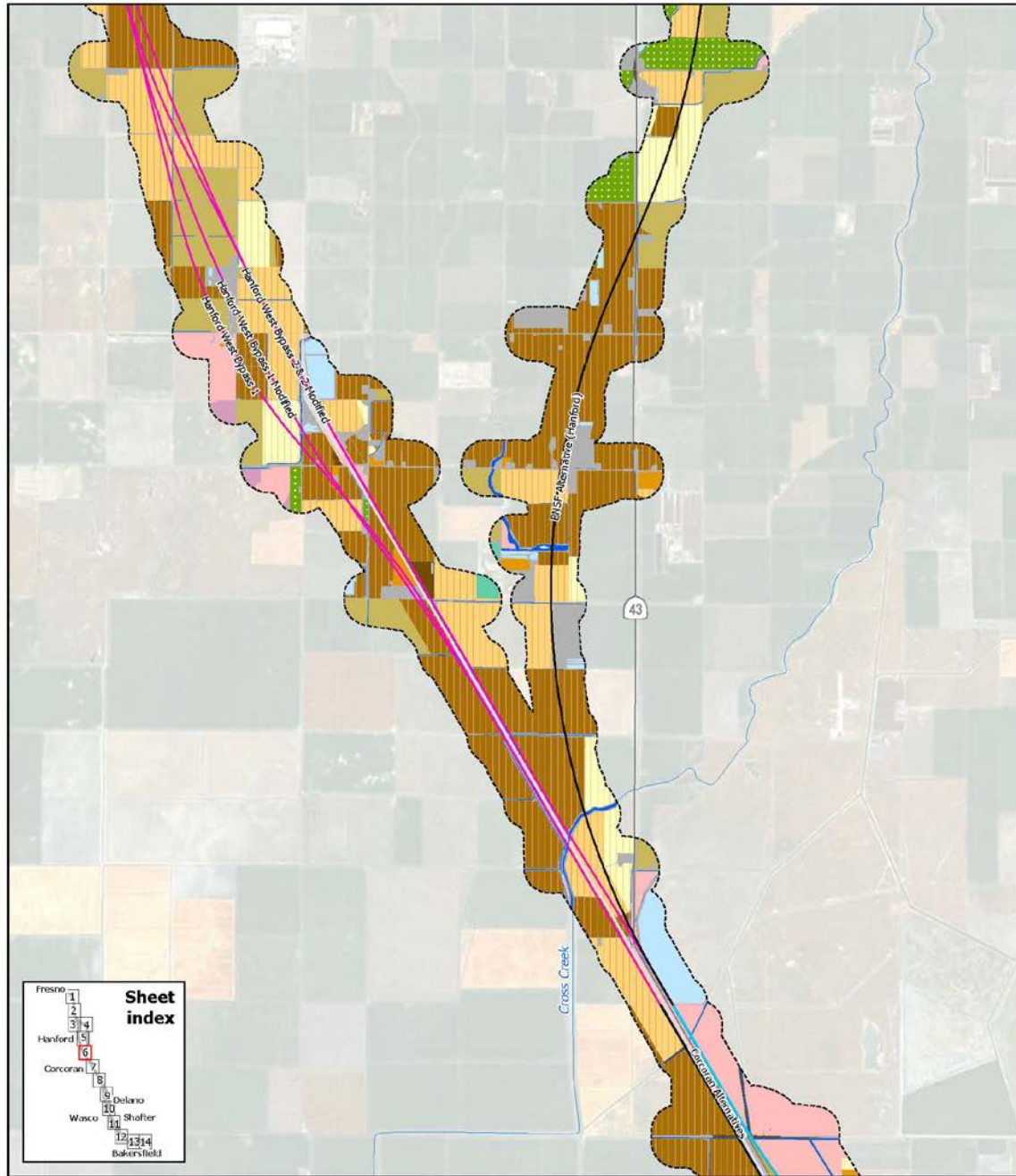


Figure A3-1e
 Observed Habitats within the Habitat Study Area



Data source: URS/HMM/Arup JV, 2013.
 Image source: ESRI

November 20, 2013

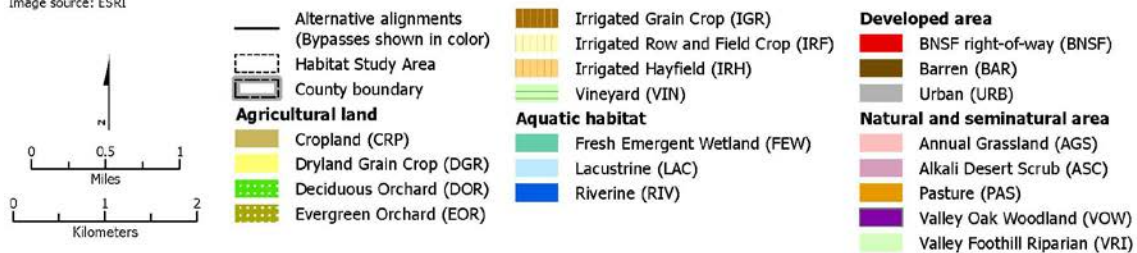
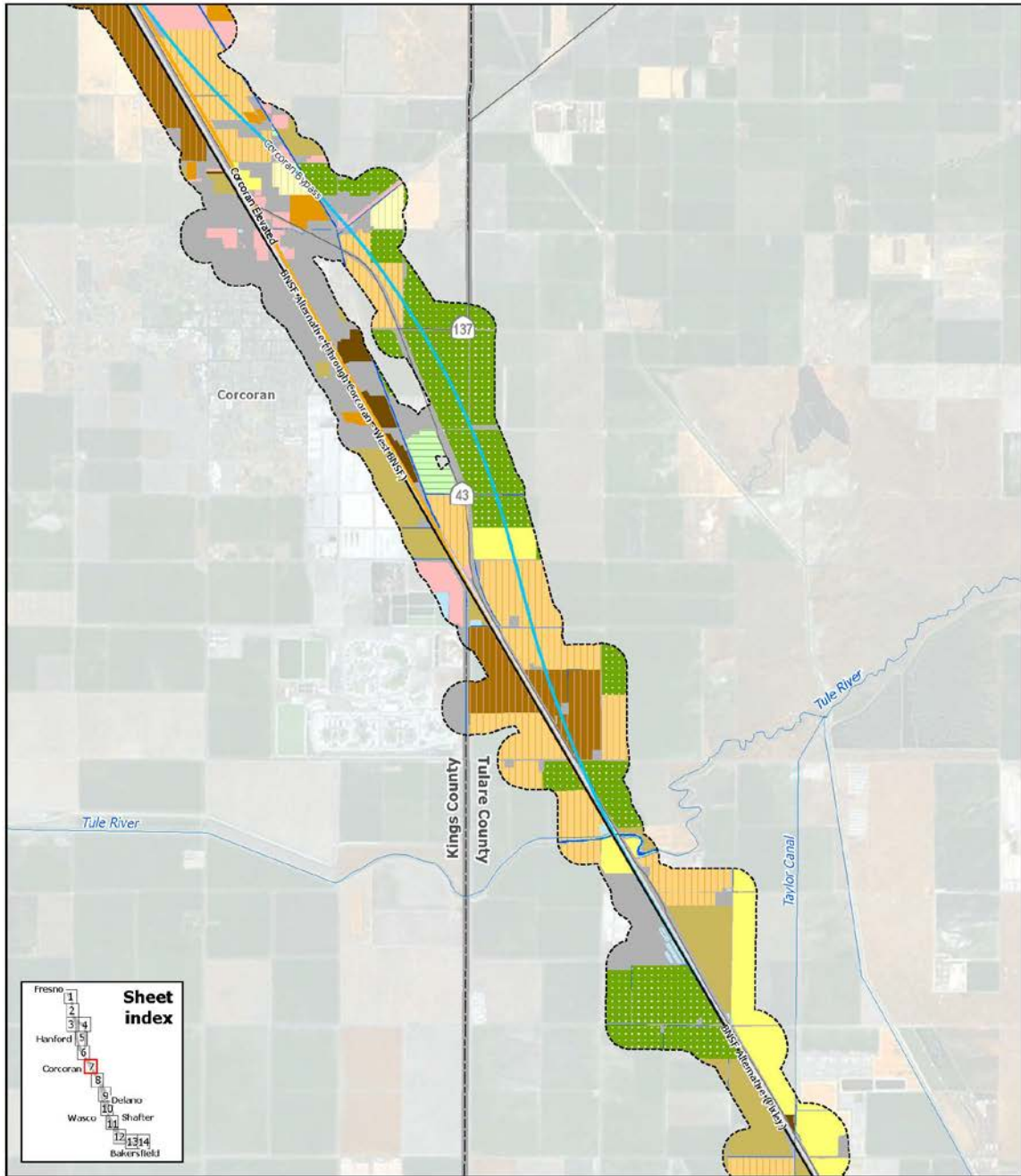


Figure A3-1f
 Observed Habitats within the Habitat Study Area



Data source: URS/HMM/Arup JV, 2013.
 Image source: ESRI

November 20, 2013

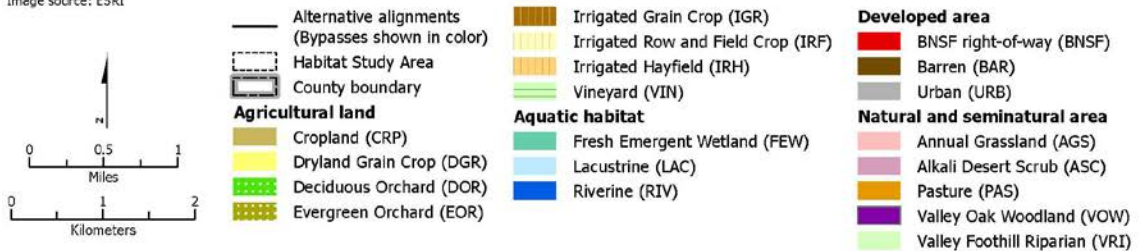
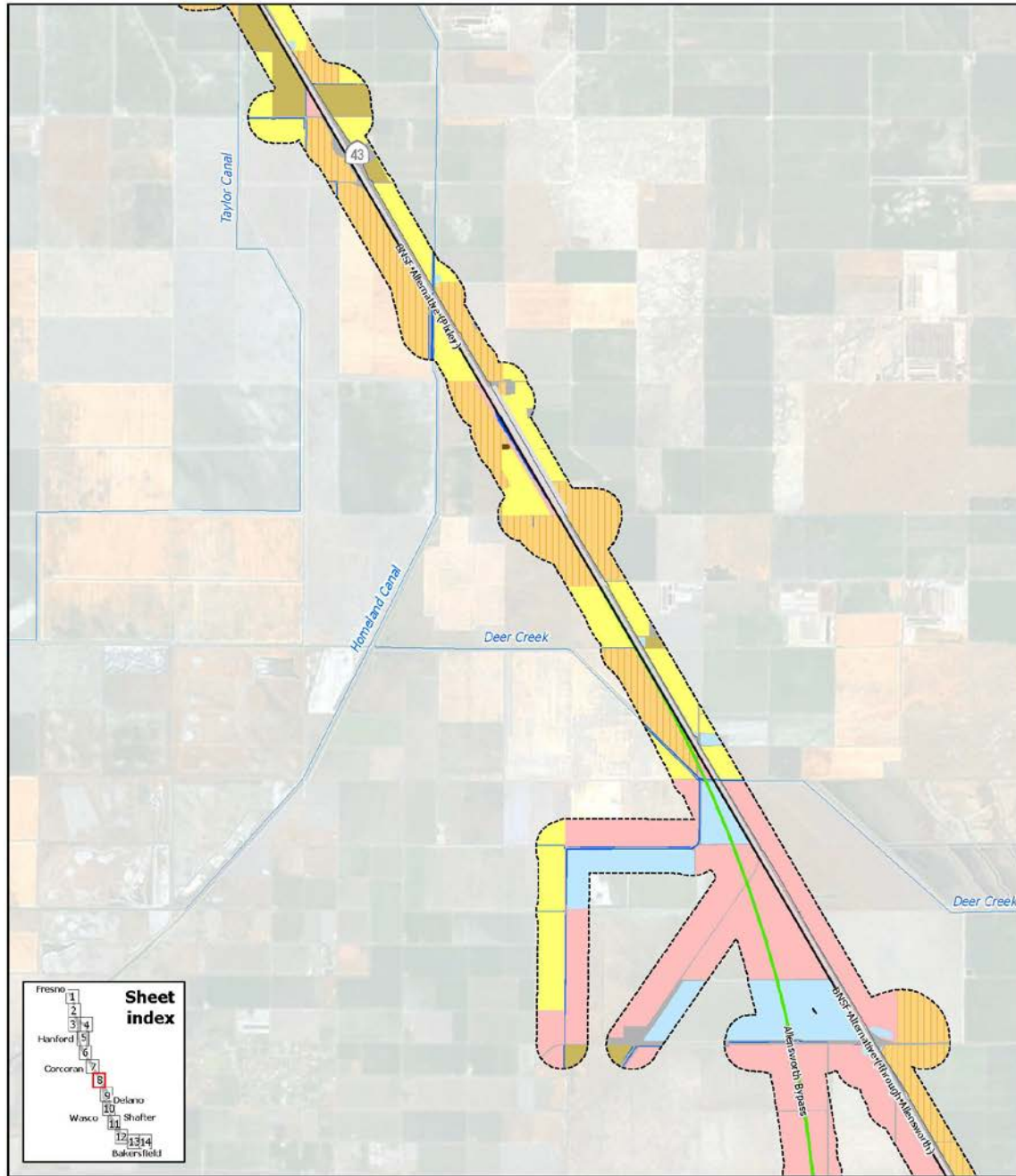


Figure A3-1g
 Observed Habitats within the Habitat Study Area



Data source: URS/HMM/Arup JV, 2013.
 Image source: ESRI

November 20, 2013

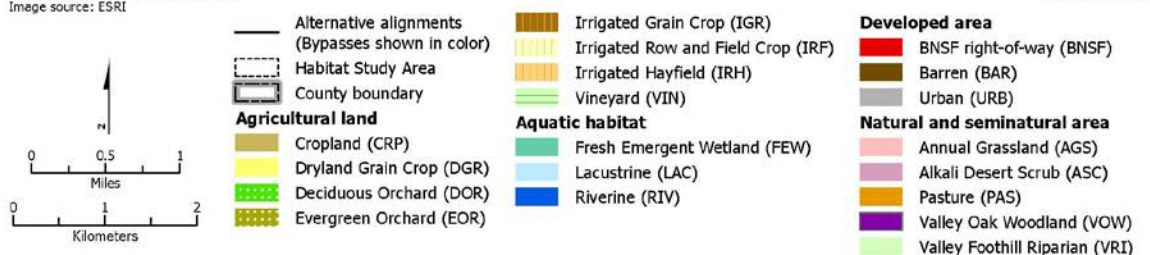
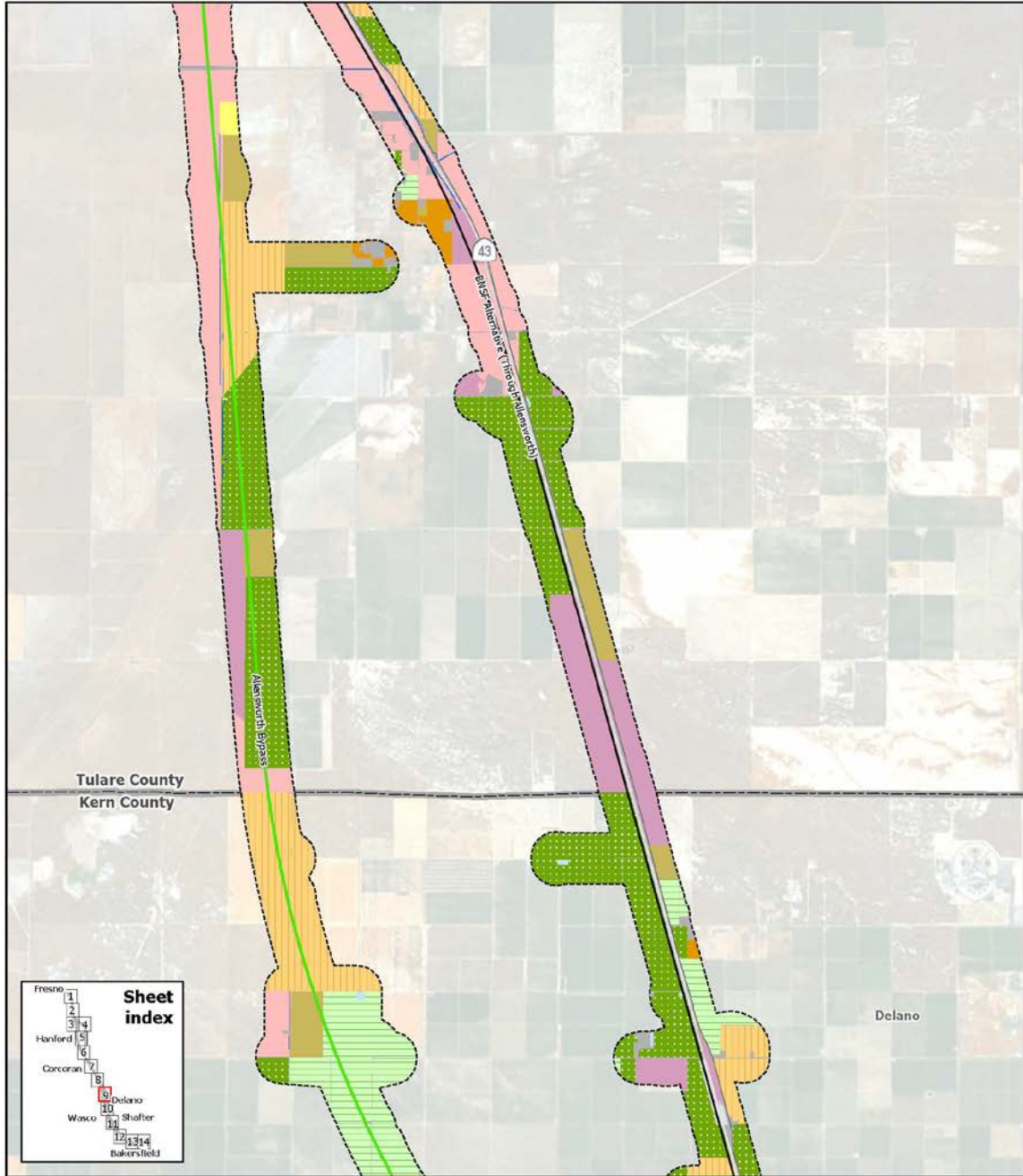


Figure A3-1h
 Observed Habitats within the Habitat Study Area



Data source: URS/HMM/Arup JV, 2013.
 Image source: ESRI

November 20, 2013

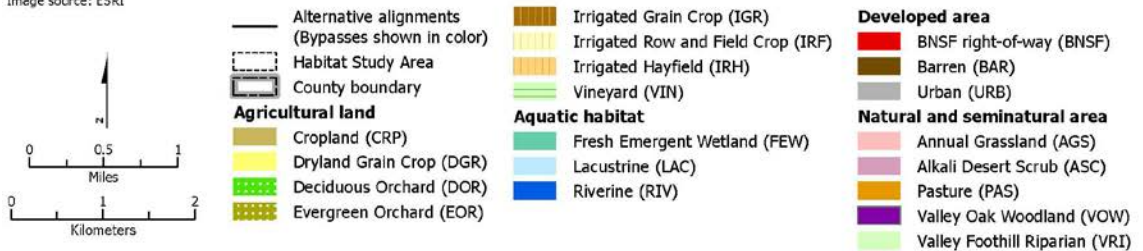
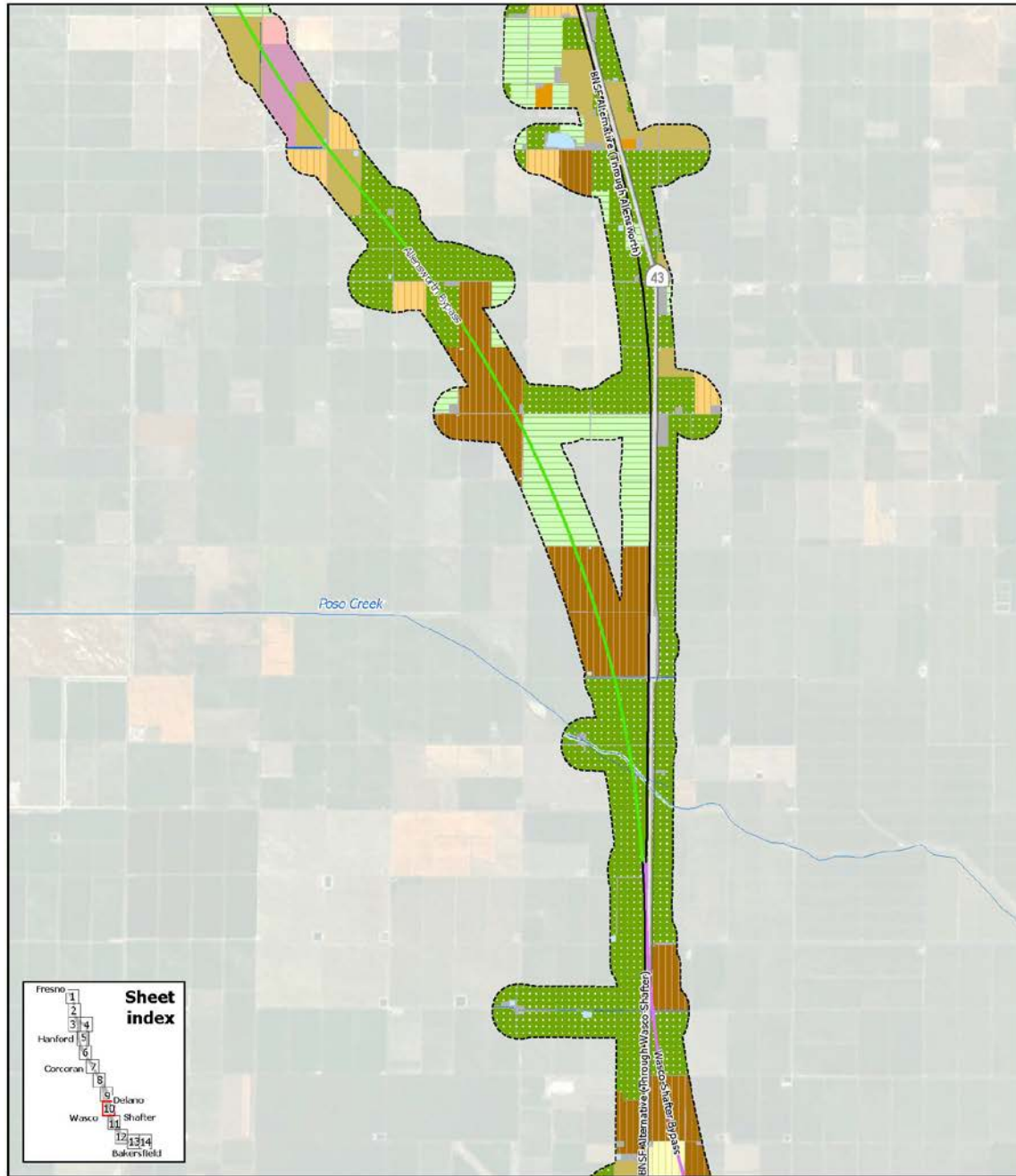


Figure A3-1i
 Observed Habitats within the Habitat Study Area



Data source: URS/HMM/Arup JV, 2013.
 Image source: ESRI

November 20, 2013

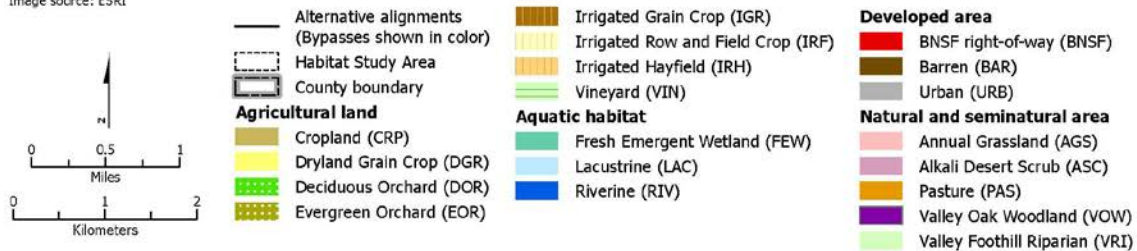
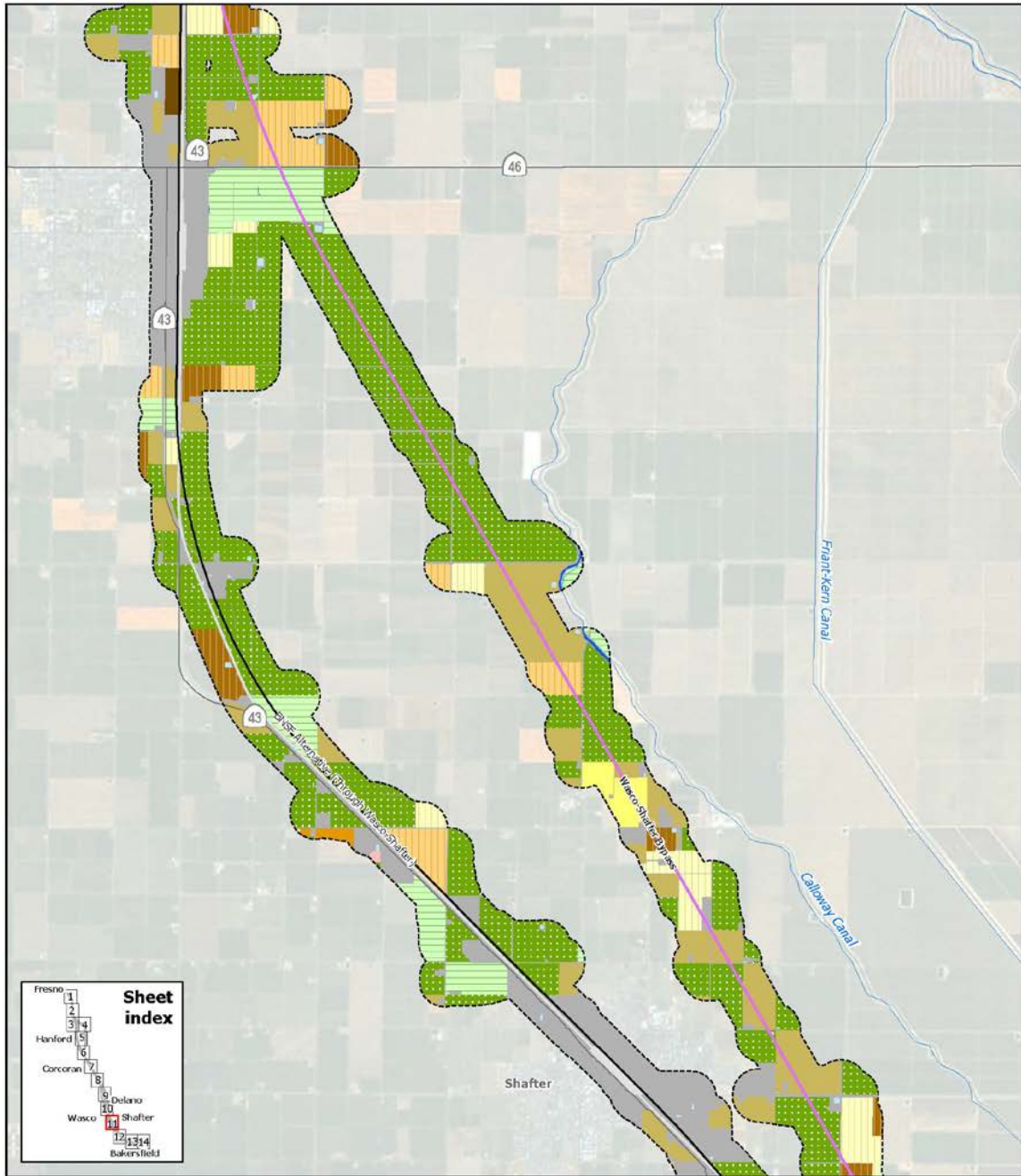


Figure A3-1j
 Observed Habitats within the Habitat Study Area



Data source: URS/HMM/Arup JV, 2013.
 Image source: ESRI

November 20, 2013

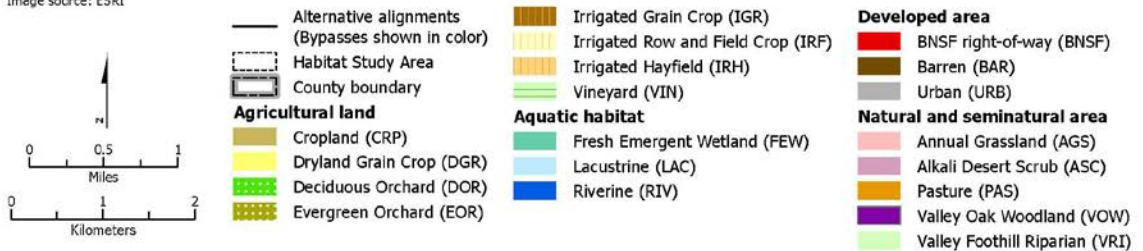
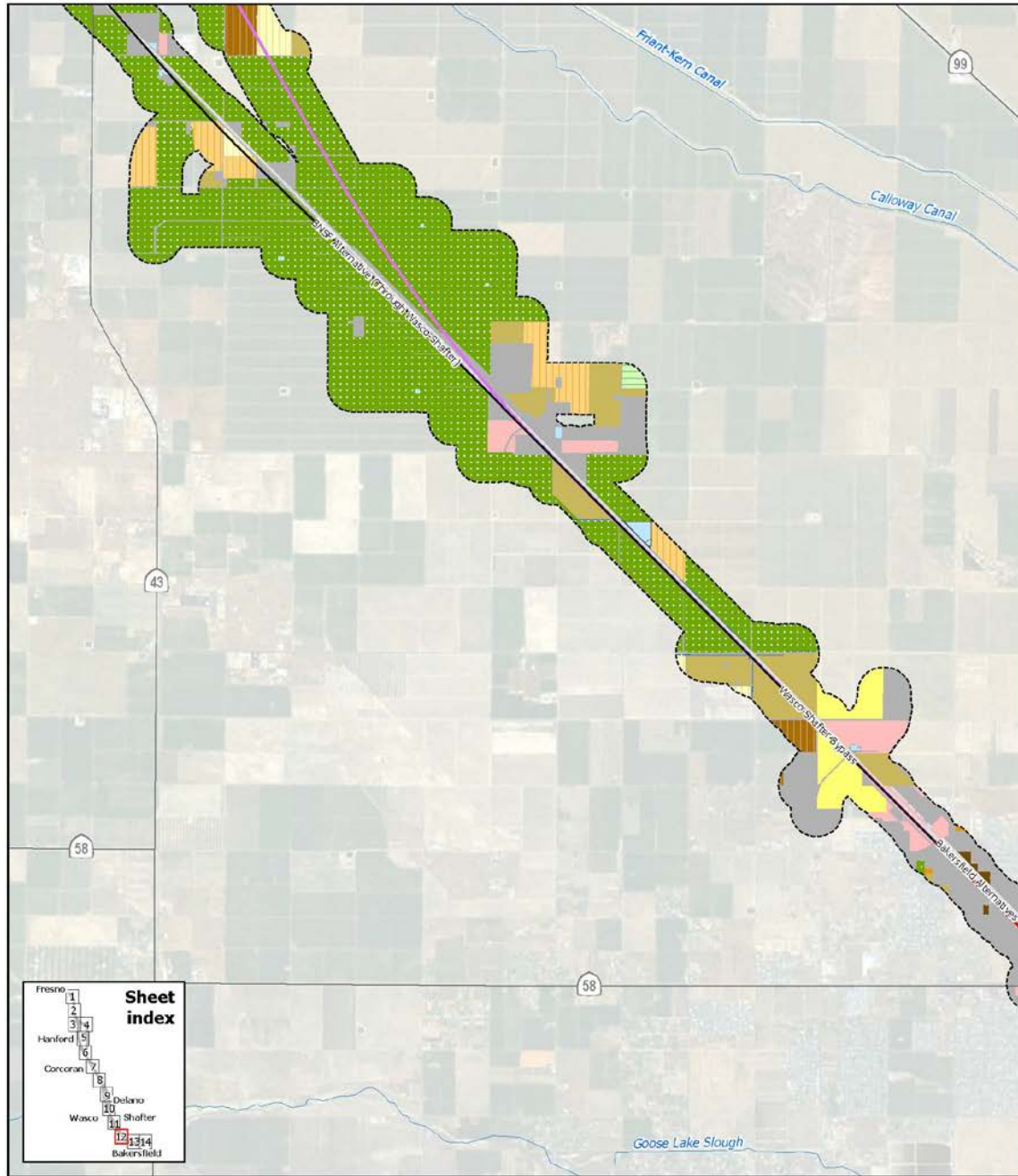


Figure A3-1k
 Observed Habitats within the Habitat Study Area



Data source: URS/HMM/Arup JV, 2013.
 Image source: ESRI

November 20, 2013

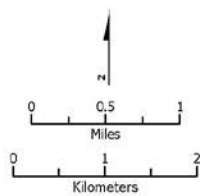
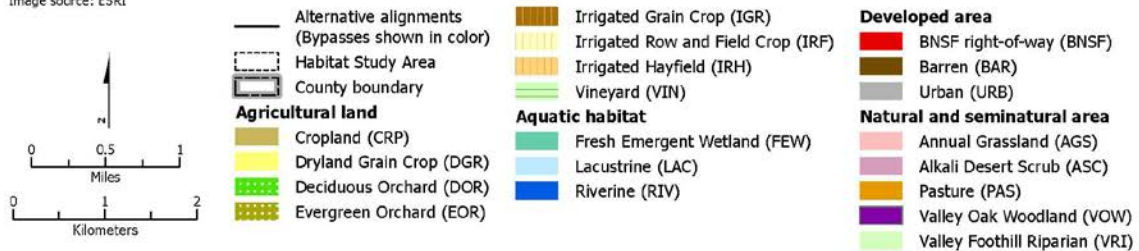
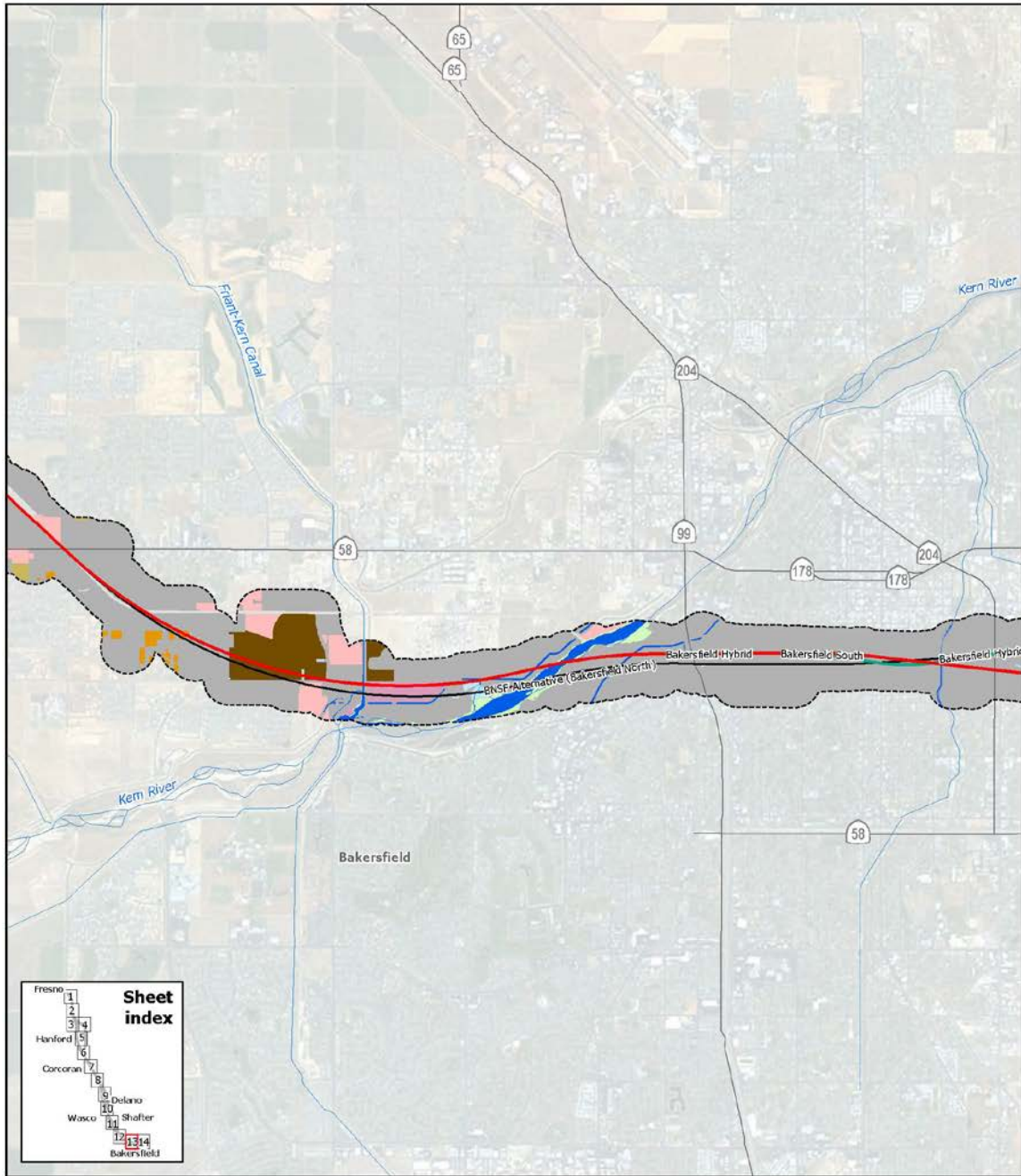


Figure A3-11
 Observed Habitats within the Habitat Study Area



Data source: URS/HMM/Arup JV, 2013.
 Image source: ESRI

November 20, 2013

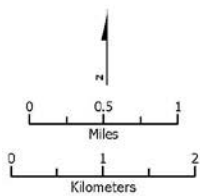
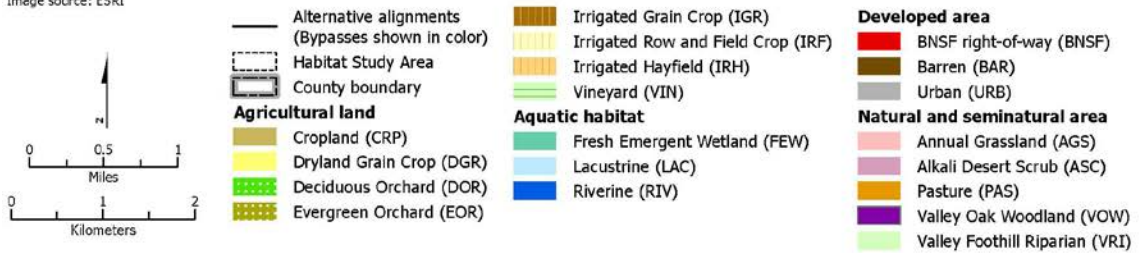
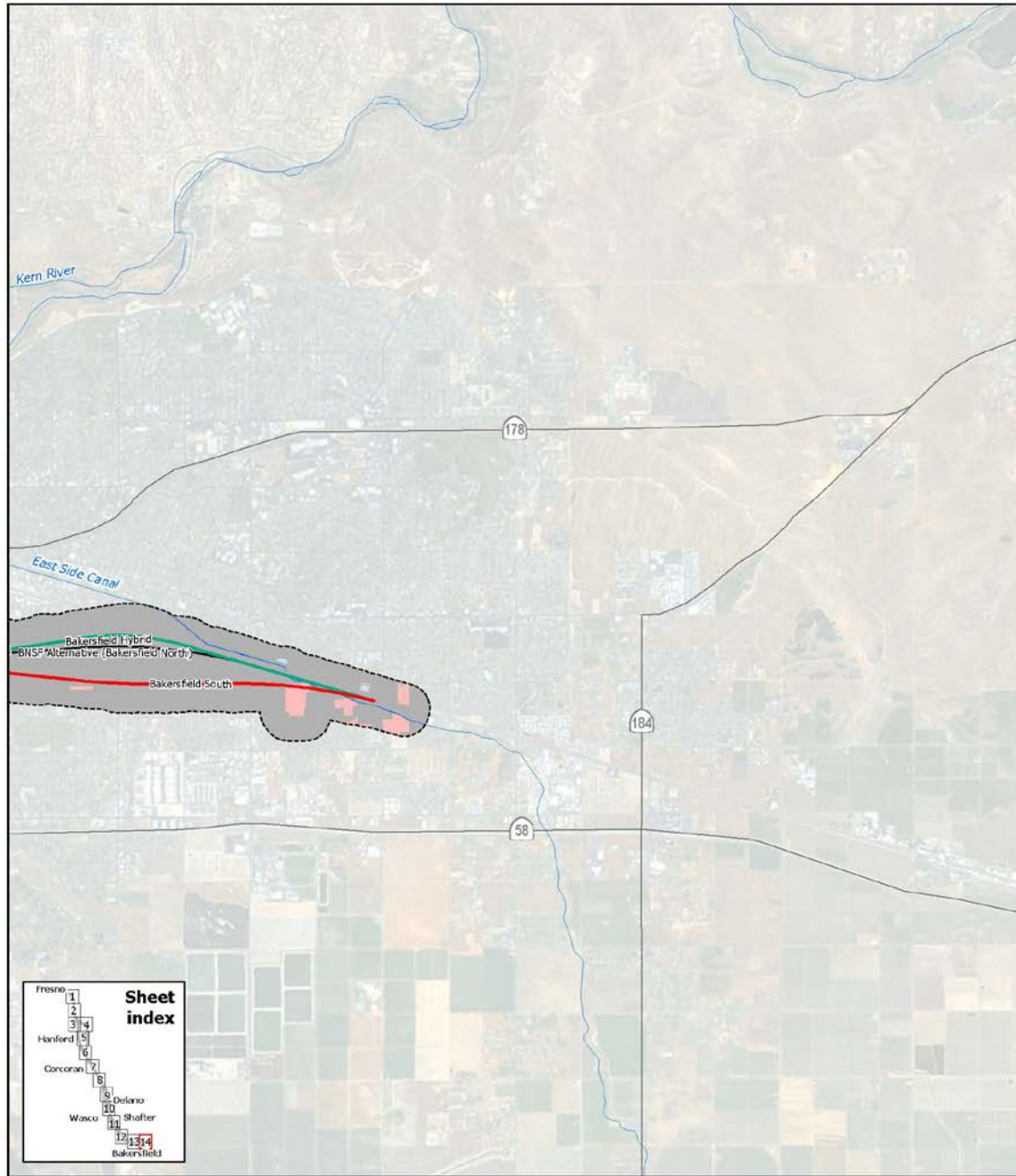


Figure A3-1m
 Observed Habitats within the Habitat Study Area



Data source: URS/HMM/Arup JV, 2013.
 Image source: ESRI

November 20, 2013

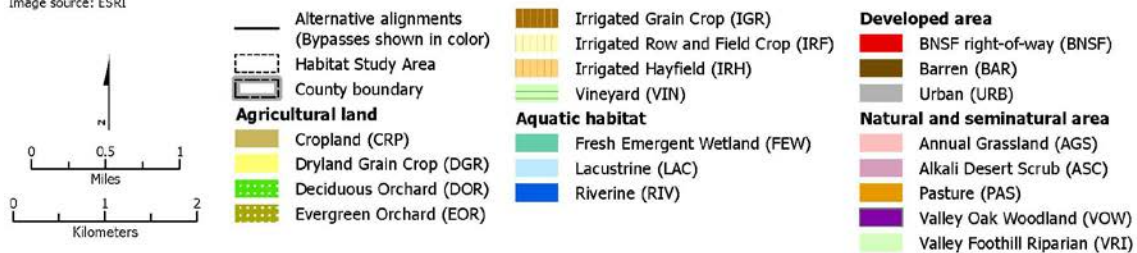


Figure A3-1n
 Observed Habitats within the Habitat Study Area