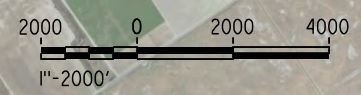




LEGEND
 + + EXISTING FREIGHT RAILROAD
 — PROPOSED CHST



c:\pwworking\hmm\external\veron.sudhausen-arup.com\dms70811\FB-CB-1275-K6.dgn
 \$PLTDRVS\$
 \$PENTBLS\$
 eron_sudhausen 2/10/2013 10:54:42 AM

REV	DATE	BY	CHK	APP	DESCRIPTION

DESIGNED BY
A. POLING
 DRAWN BY
J. BORGHESI
 CHECKED BY
D. HUNT
 IN CHARGE
R. COFFIN
 DATE
12/31/13

**RECORD SET 15%
 DESIGN SUBMISSION**

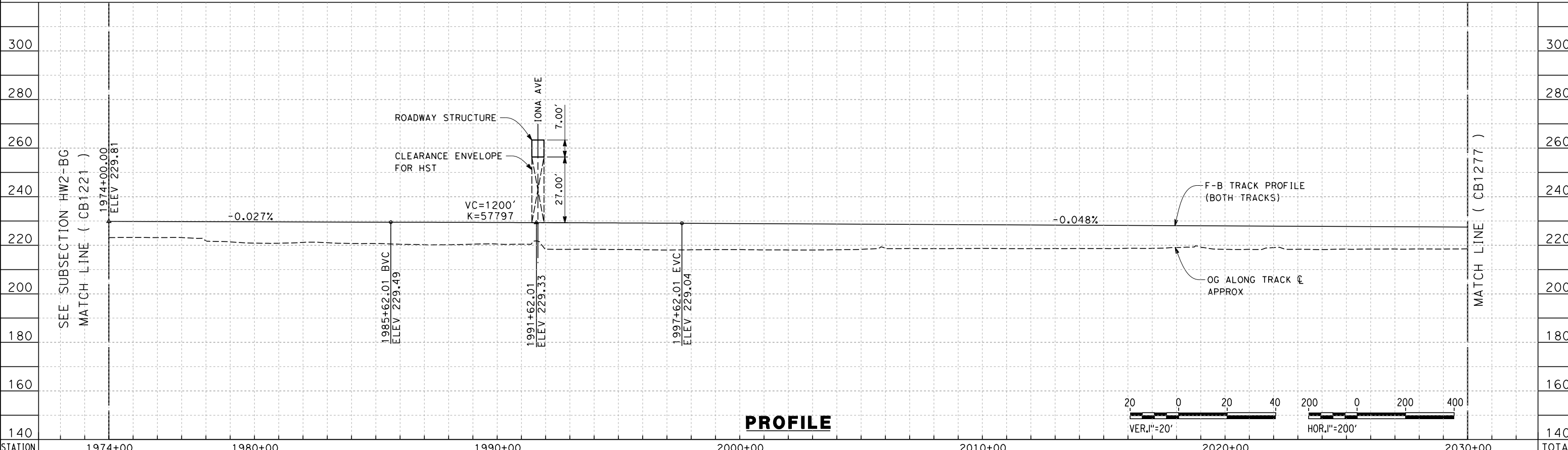
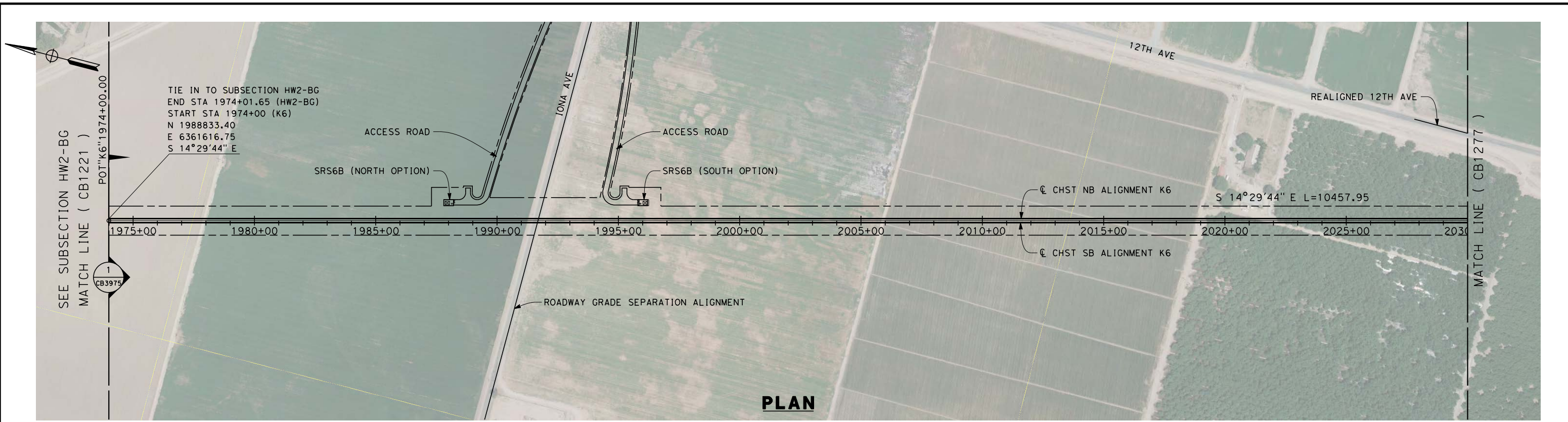
**NOT FOR
 CONSTRUCTION**



**CALIFORNIA HIGH-SPEED TRAIN PROJECT
 FRESNO TO BAKERSFIELD**
 KAWEAH SUBSECTION
 ALIGNMENT K6
 STA 1974+00 TO 2599+10
 KEY MAP

CONTRACT NO.
 HSR 06-0003
 DRAWING NO.
 CB1275
 SCALE
 AS SHOWN
 SHEET NO.
 1 OF 16

c:\pwworking\hmm\external\alexander.poling-arup.com\dms70811\FB-CB-1276-K6.dgn alexander.poling 12/11/2013 3:53:27 PM



STATION	1974+00	1980+00	1990+00	2000+00	2010+00	2020+00	2030+00	TOTAL
Exc								
Emb								

REV	DATE	BY	CHK	APP	DESCRIPTION

DESIGNED BY
A. POLING
DRAWN BY
J. BORGHESI
CHECKED BY
D. HUNT
IN CHARGE
R. COFFIN
DATE
12/31/13

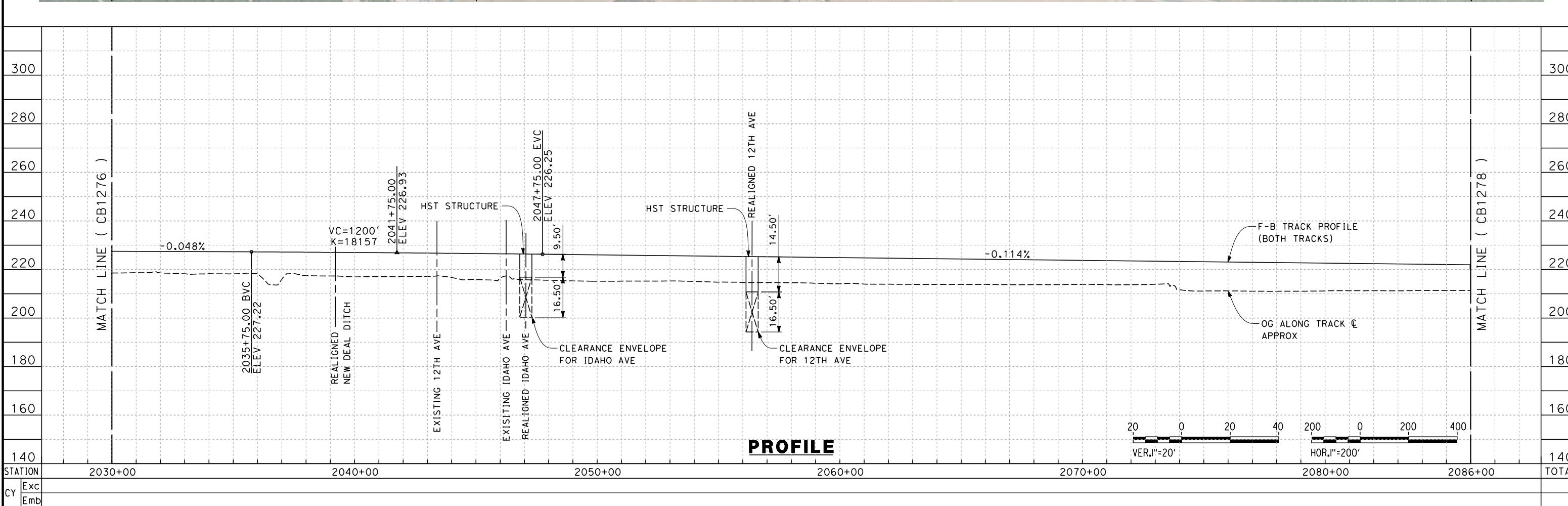
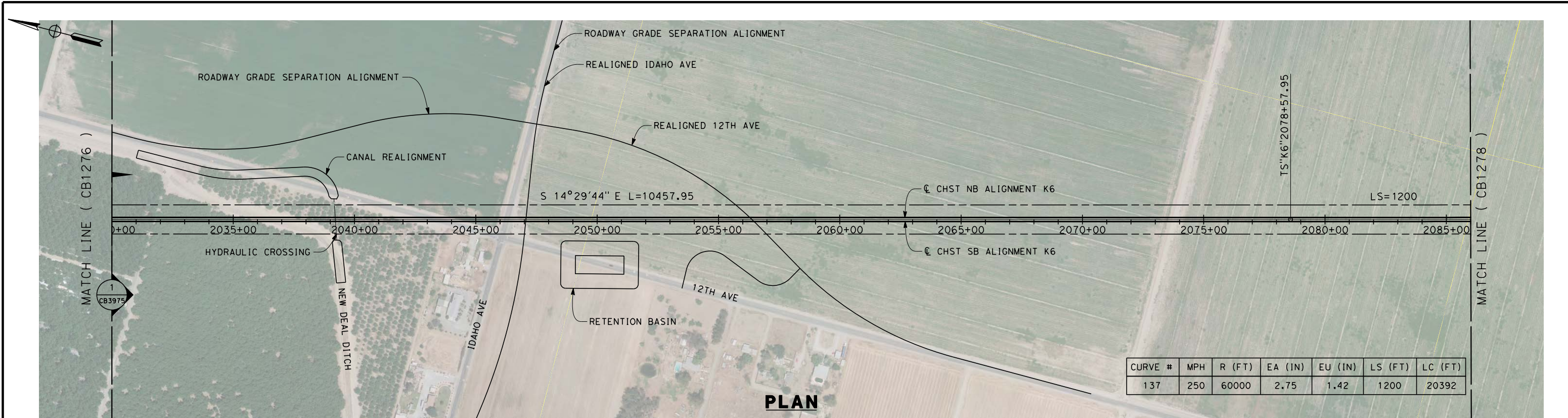
**RECORD SET 15%
DESIGN SUBMISSION**

**NOT FOR
CONSTRUCTION**



**CALIFORNIA HIGH-SPEED TRAIN PROJECT
FRESNO TO BAKERSFIELD**
KAWEAH SUBSECTION
ALIGNMENT K6
STA. 1974+00 TO 2030+00
PLAN AND PROFILE

CONTRACT NO.
HSR 06-0003
DRAWING NO.
CB1276
SCALE
AS SHOWN
SHEET NO.
2 OF 16



REV	DATE	BY	CHK	APP	DESCRIPTION

DESIGNED BY
A. POLING
DRAWN BY
J. BORGHESI
CHECKED BY
D. HUNT
IN CHARGE
R. COFFIN
DATE
12/31/13

**RECORD SET 15%
DESIGN SUBMISSION**

**NOT FOR
CONSTRUCTION**

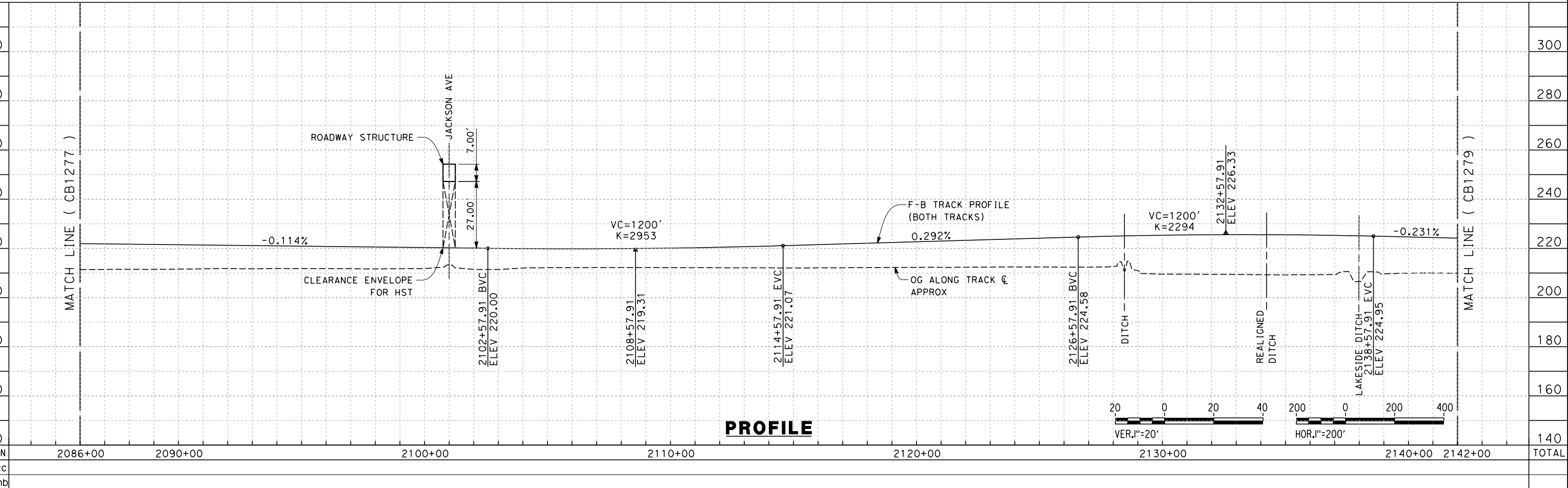
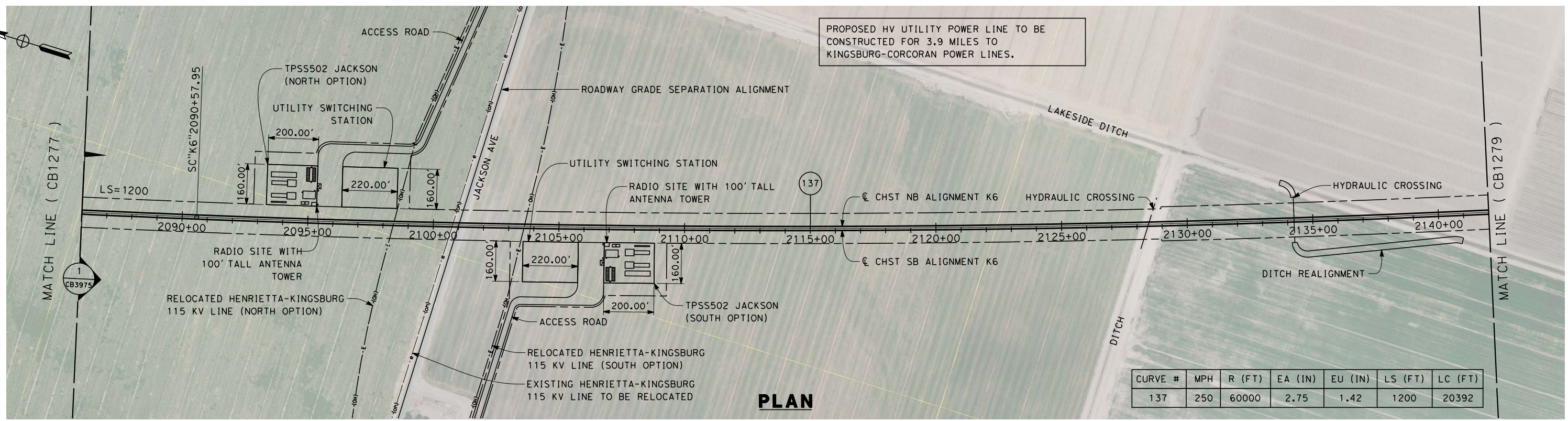


**CALIFORNIA HIGH-SPEED TRAIN PROJECT
FRESNO TO BAKERSFIELD**
KAWEAH SUBSECTION
ALIGNMENT K6
STA. 2030+00 TO 2086+00
PLAN AND PROFILE

CONTRACT NO.
HSR 06-0003
DRAWING NO.
CB1277
SCALE
AS SHOWN
SHEET NO.
3 OF 16

c:\pwworking\hmm\external\alexander.poling-arup.com\dms70811\FB-CB-1277-K6.dgn alexander.poling 12/11/2013 3:54:41 PM

12/31/2013 11:21:25 AM c:\pwworking\hmm\external\frank.palermo01-arup.com\dms70811\FB-CB-1278-K6.dgn



REV	DATE	BY	CHK	APP	DESCRIPTION

DESIGNED BY
A. POLING
DRAWN BY
J. BORGHESI
CHECKED BY
D. HUNT
IN CHARGE
R. COFFIN
DATE
12/31/13

**RECORD SET 15%
DESIGN SUBMISSION**

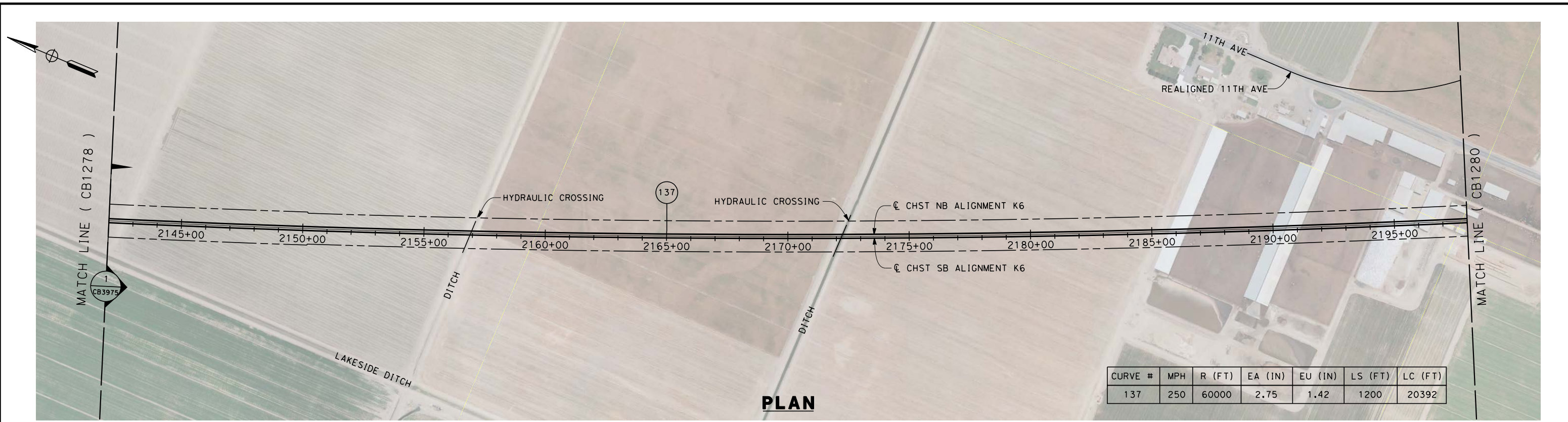
**NOT FOR
CONSTRUCTION**



**CALIFORNIA HIGH-SPEED TRAIN PROJECT
FRESNO TO BAKERSFIELD**
KAWEAH SUBSECTION
ALIGNMENT K6
STA. 2086+00 TO 2142+00
PLAN AND PROFILE

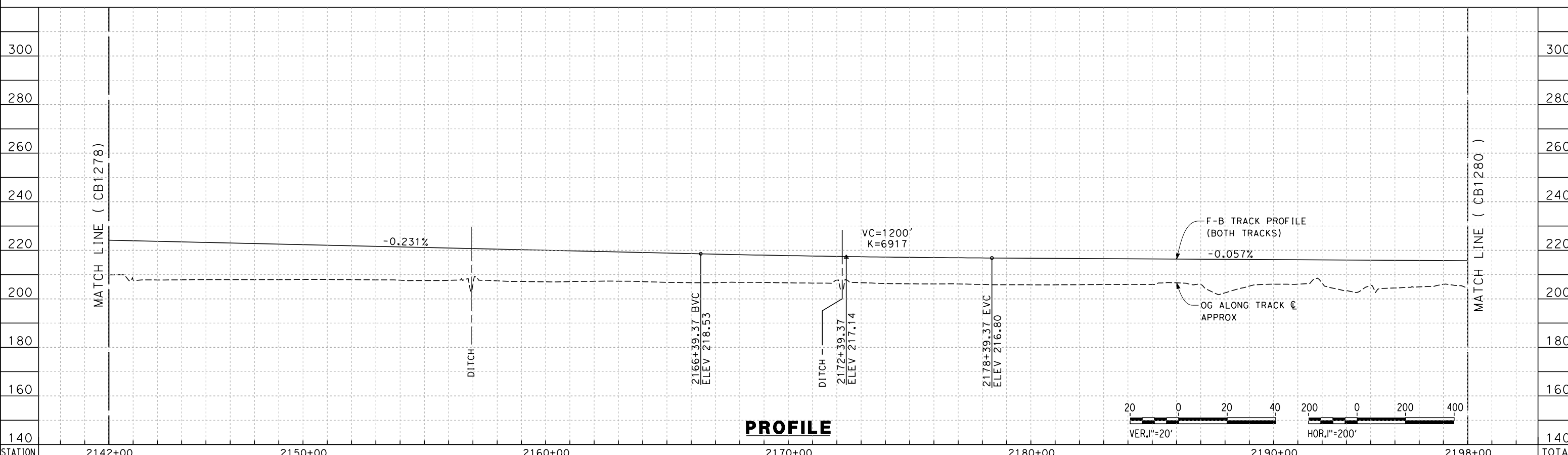
CONTRACT NO.
HSR 06-0003
DRAWING NO.
CB1278
SCALE
AS SHOWN
SHEET NO.
4 OF 16

c:\pwworking\hmm\external\alexander.poling-arup.com\dms70811\FB-CB-1279-K6.dgn

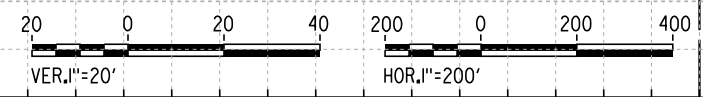


CURVE #	MPH	R (FT)	EA (IN)	EU (IN)	LS (FT)	LC (FT)
137	250	60000	2.75	1.42	1200	20392

PLAN



PROFILE



STATION	2142+00	2150+00	2160+00	2170+00	2180+00	2190+00	2198+00	TOTAL
Exc								
Emb								

REV	DATE	BY	CHK	APP	DESCRIPTION

DESIGNED BY
A. POLING
DRAWN BY
J. BORGHESI
CHECKED BY
D. HUNT
IN CHARGE
R. COFFIN
DATE
12/31/13

**RECORD SET 15%
DESIGN SUBMISSION**

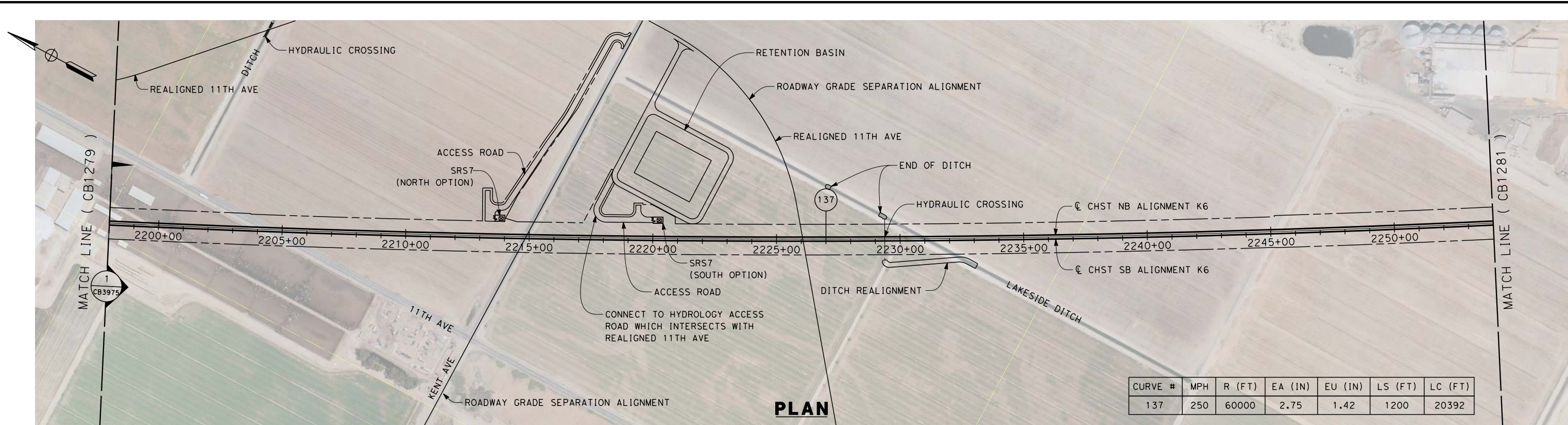
**NOT FOR
CONSTRUCTION**



**CALIFORNIA HIGH-SPEED TRAIN PROJECT
FRESNO TO BAKERSFIELD**

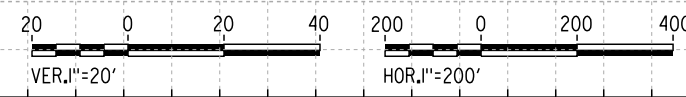
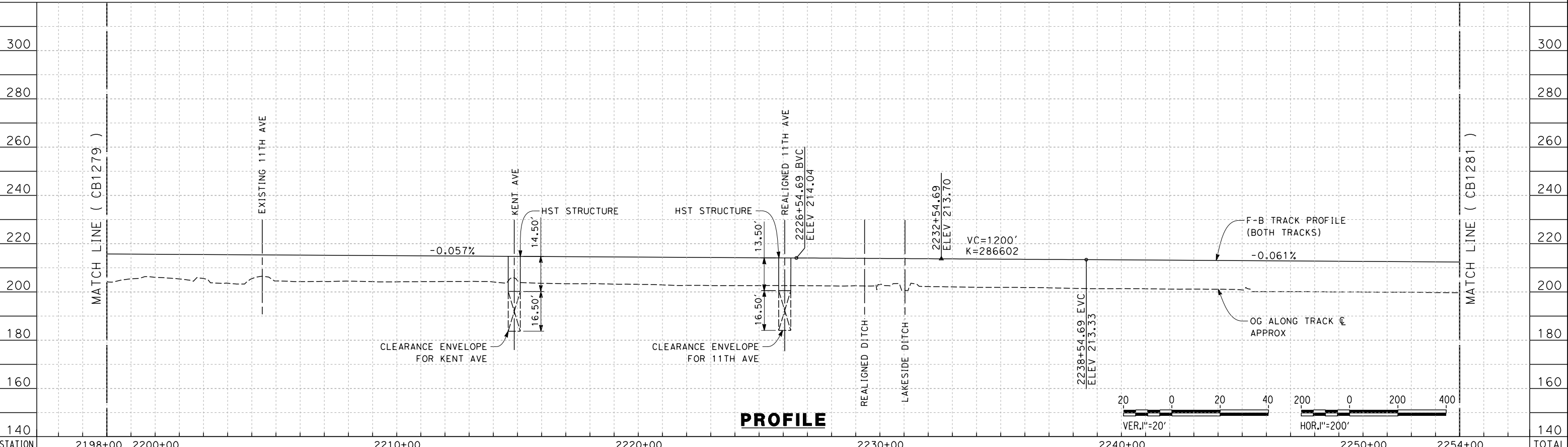
KAWEAH SUBSECTION
ALIGNMENT K6
STA. 2142+00 TO 2198+00
PLAN AND PROFILE

CONTRACT NO.
HSR 06-0003
DRAWING NO.
CB1279
SCALE
AS SHOWN
SHEET NO.
5 OF 16



CURVE #	MPH	R (FT)	EA (IN)	EU (IN)	LS (FT)	LC (FT)
137	250	60000	2.75	1.42	1200	20392

12/12/2013 9:53:13 PM c:\pwworking\hmm\external\paul.tonkin01-arup.com\dms70811\FB-CB-1280-K6.dgn paul.tonkin



STATION	2198+00	2200+00	2210+00	2220+00	2230+00	2240+00	2250+00	2254+00	TOTAL
Exc									
Emb									

DESIGNED BY
A. POLING
DRAWN BY
J. BORGHESI
CHECKED BY
D. HUNT
IN CHARGE
R. COFFIN
DATE
12/31/13

**RECORD SET 15%
DESIGN SUBMISSION**

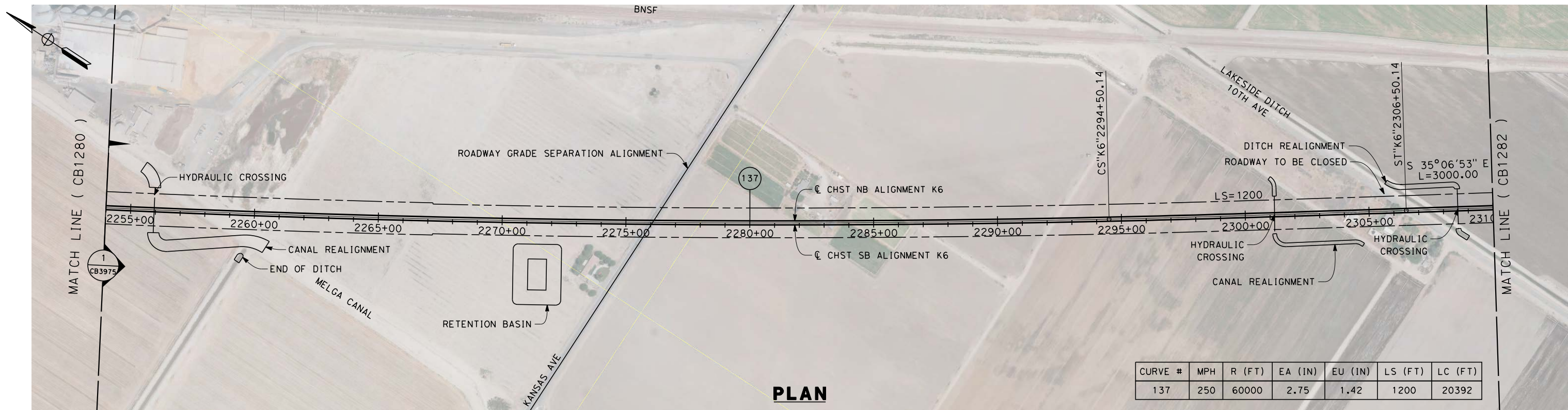
**NOT FOR
CONSTRUCTION**



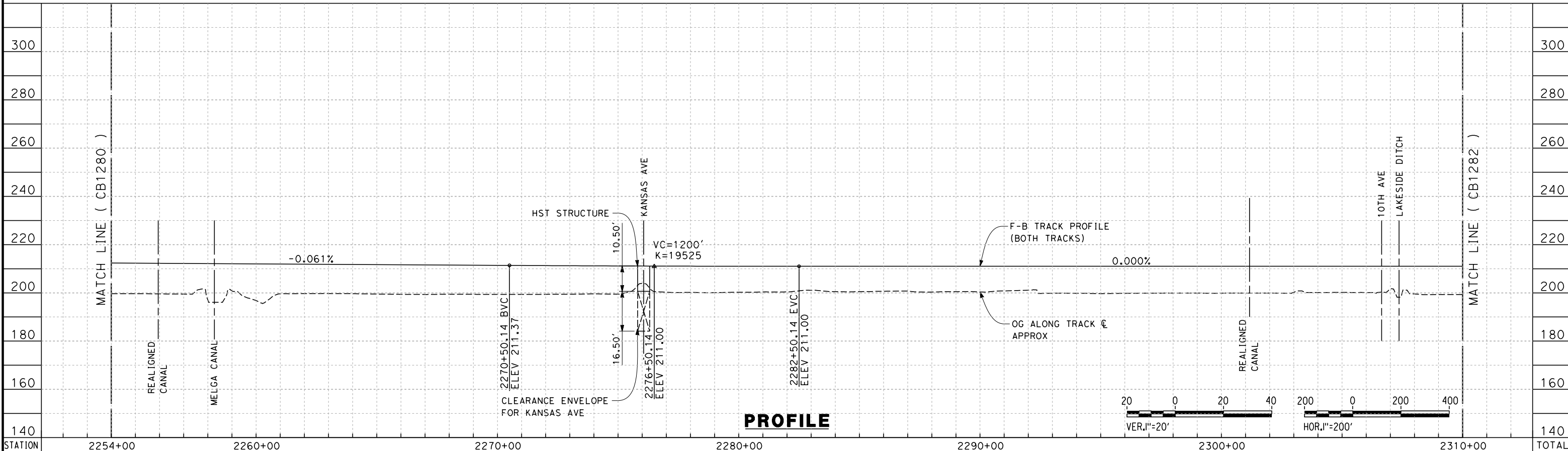
**CALIFORNIA HIGH-SPEED TRAIN PROJECT
FRESNO TO BAKERSFIELD**
KAWEAH SUBSECTION
ALIGNMENT K6
STA. 2198+00 TO 2254+00
PLAN AND PROFILE

CONTRACT NO.
HSR 06-0003
DRAWING NO.
CB1280
SCALE
AS SHOWN
SHEET NO.
6 OF 16

REV	DATE	BY	CHK	APP	DESCRIPTION



PLAN



PROFILE

STATION	2254+00	2260+00	2270+00	2280+00	2290+00	2300+00	2310+00	TOTAL
Exc								
Emb								

REV	DATE	BY	CHK	APP	DESCRIPTION

DESIGNED BY
A. POLING
DRAWN BY
J. BORGHESI
CHECKED BY
D. HUNT
IN CHARGE
R. COFFIN
DATE
12/31/13

**RECORD SET 15%
DESIGN SUBMISSION**

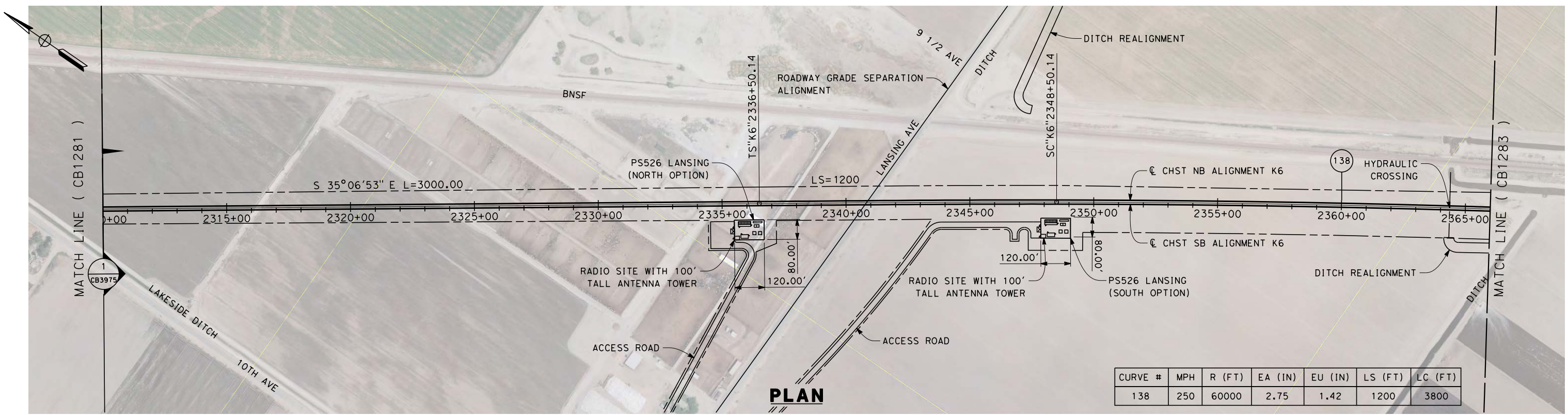
**NOT FOR
CONSTRUCTION**



**CALIFORNIA HIGH-SPEED TRAIN PROJECT
FRESNO TO BAKERSFIELD**
KAWEAH SUBSECTION
ALIGNMENT K6
STA. 2254+00 TO 2310+00
PLAN AND PROFILE

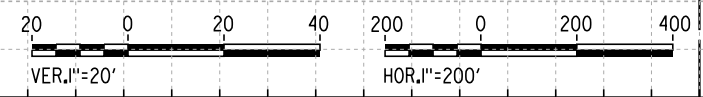
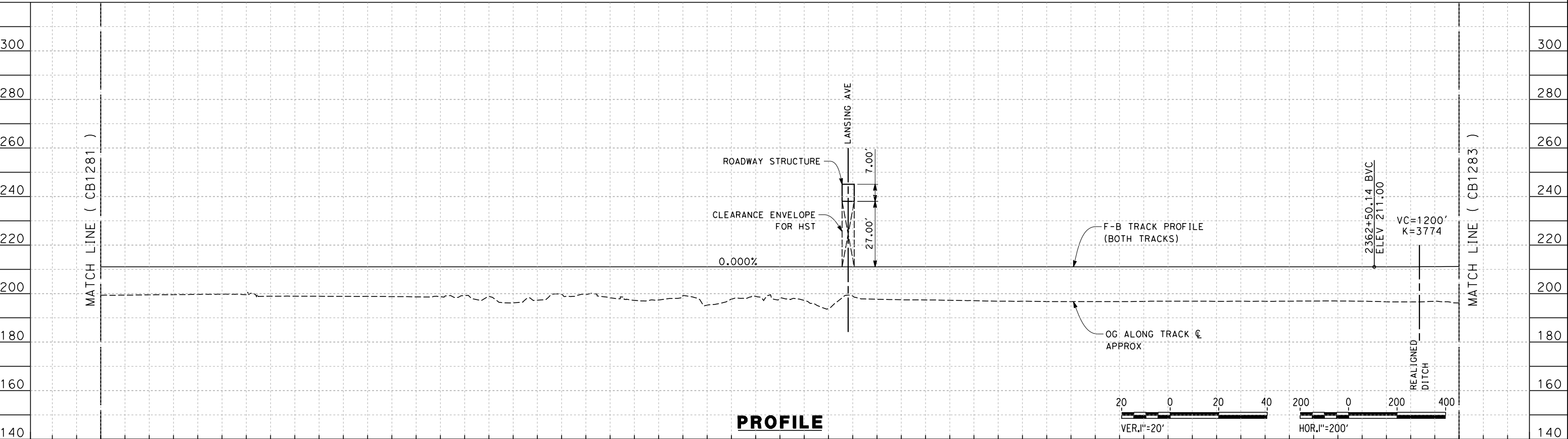
CONTRACT NO.
HSR 06-0003
DRAWING NO.
CB1281
SCALE
AS SHOWN
SHEET NO.
7 of 16

alexander.poling 12/11/2013 3:59:51 PM c:\pwworking\hmm\external\alexander.poling-arup.com\dms70811\FB-CB-1281-K6.dgn



CURVE #	MPH	R (FT)	EA (IN)	EU (IN)	LS (FT)	LC (FT)
138	250	60000	2.75	1.42	1200	3800

c:\pwworking\hmm\external\alexander.poling-arup.com\dms70811\FB-CB-1282-K6.dgn



STATION	2310+00	2320+00	2330+00	2340+00	2350+00	2360+00	2366+00	TOTAL
Exc								
Emb								

REV	DATE	BY	CHK	APP	DESCRIPTION

DESIGNED BY
A. POLING
DRAWN BY
J. BORGHESI
CHECKED BY
D. HUNT
IN CHARGE
R. COFFIN
DATE
12/31/13

**RECORD SET 15%
DESIGN SUBMISSION**

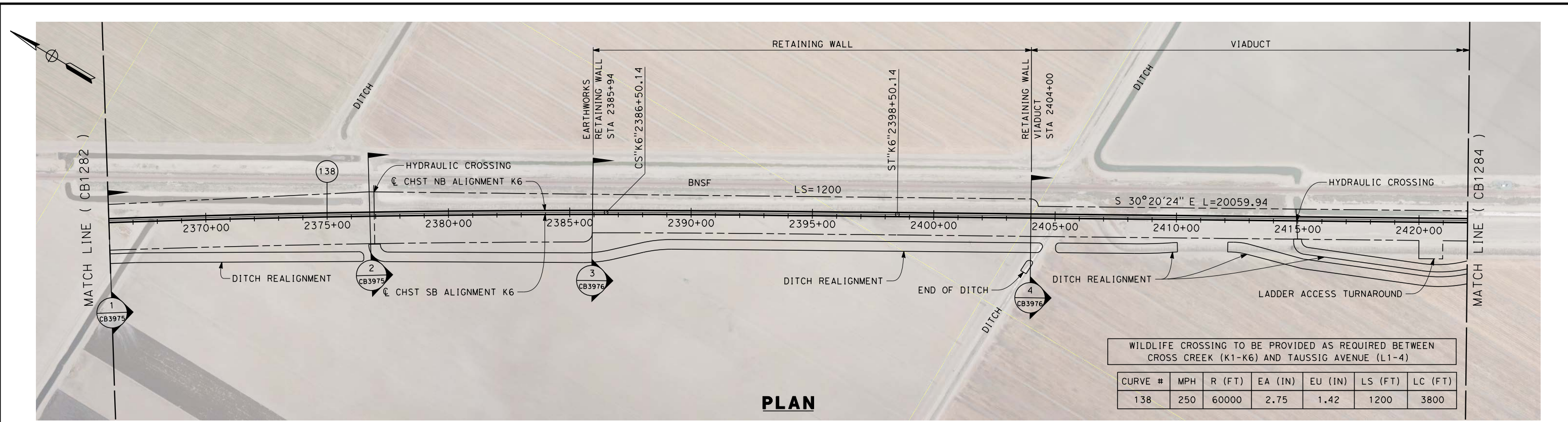
**NOT FOR
CONSTRUCTION**



**CALIFORNIA HIGH-SPEED TRAIN PROJECT
FRESNO TO BAKERSFIELD**

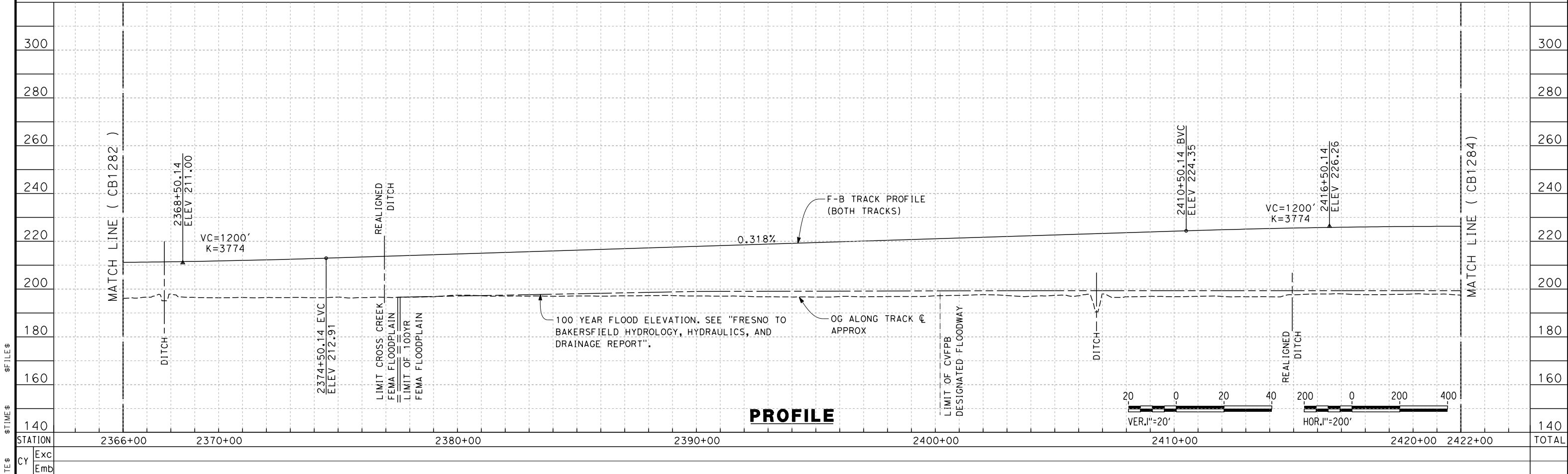
KAWEAH SUBSECTION
ALIGNMENT K6
STA. 2310+00 TO 2366+00
PLAN AND PROFILE

CONTRACT NO.
HSR 06-0003
DRAWING NO.
CB1282
SCALE
AS SHOWN
SHEET NO.
8 OF 16



PLAN

WILDLIFE CROSSING TO BE PROVIDED AS REQUIRED BETWEEN CROSS CREEK (K1-K6) AND TAUSSIG AVENUE (L1-4)						
CURVE #	MPH	R (FT)	EA (IN)	EU (IN)	LS (FT)	LC (FT)
138	250	60000	2.75	1.42	1200	3800



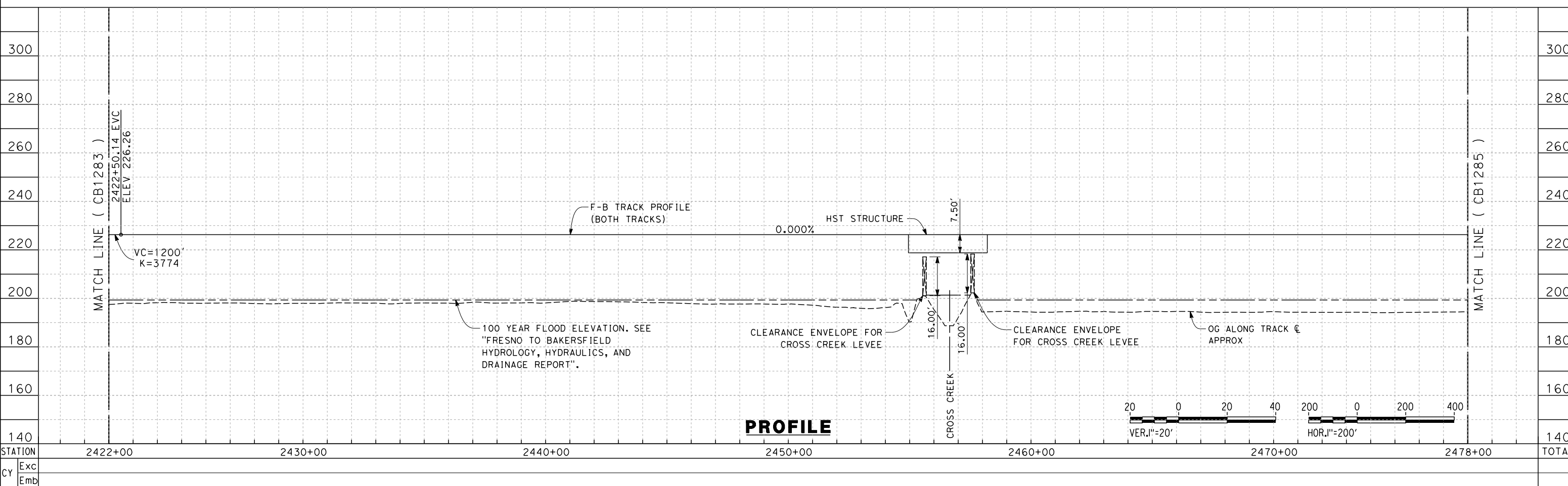
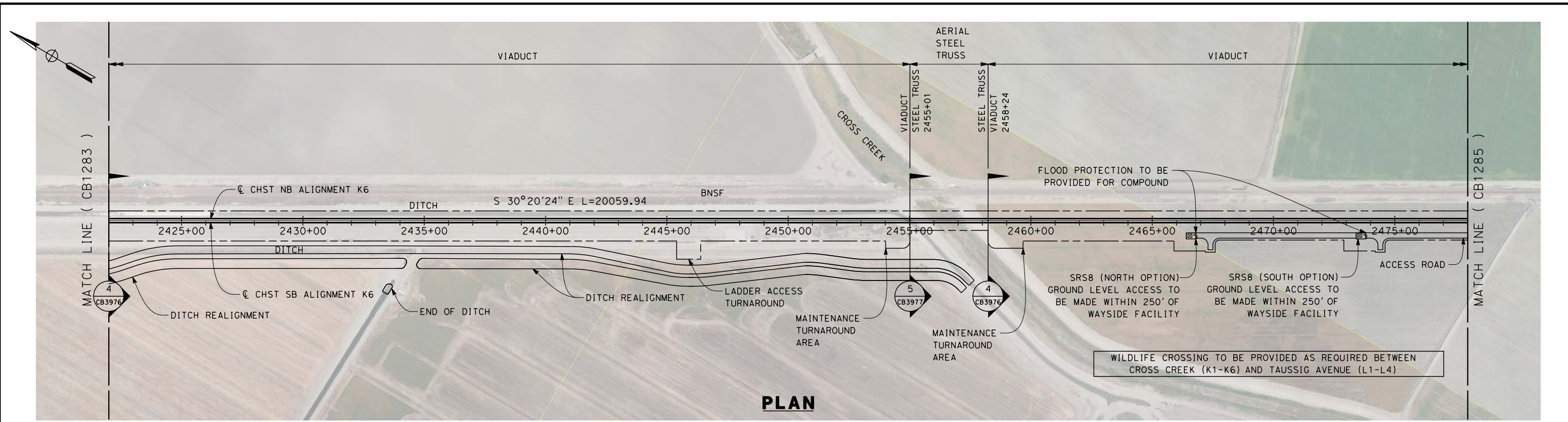
PROFILE

DESIGNED BY A. POLING	RECORD SET 15% DESIGN SUBMISSION NOT FOR CONSTRUCTION
DRAWN BY J. BORGHESI	
CHECKED BY D. HUNT	
IN CHARGE R. COFFIN	
DATE 12/31/13	

CALIFORNIA HIGH-SPEED TRAIN PROJECT
FRESNO TO BAKERSFIELD
 KAWEAH SUBSECTION
 ALIGNMENT K6
 STA. 2366+00 TO 2422+00
 PLAN AND PROFILE

CONTRACT NO. HSR 06-0003
DRAWING NO. CB1283
SCALE AS SHOWN
SHEET NO. 9 OF 16

REV	DATE	BY	CHK	APP	DESCRIPTION



REV	DATE	BY	CHK	APP	DESCRIPTION

DESIGNED BY
A. POLING
DRAWN BY
J. BORGHESI
CHECKED BY
D. HUNT
IN CHARGE
R. COFFIN
DATE
12/31/13

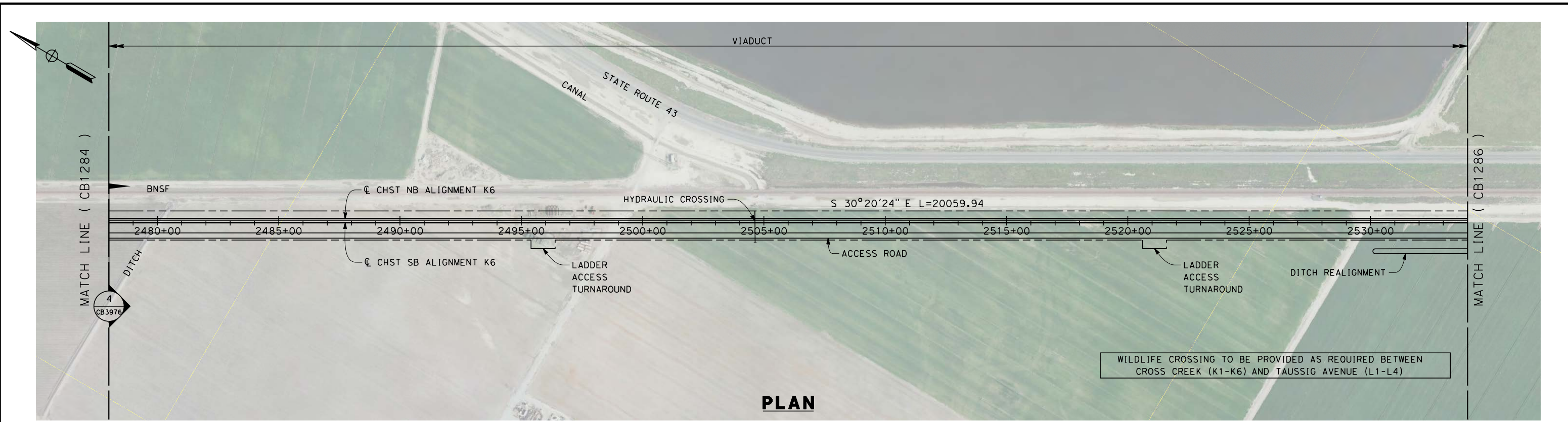
**RECORD SET 15%
DESIGN SUBMISSION**

**NOT FOR
CONSTRUCTION**

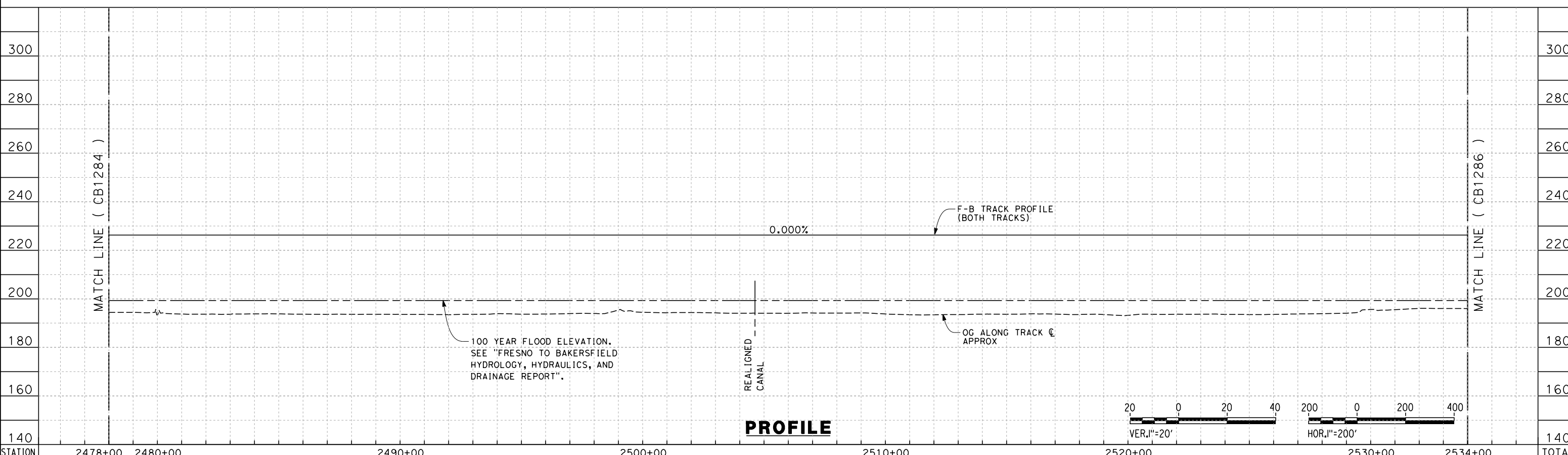


**CALIFORNIA HIGH-SPEED TRAIN PROJECT
FRESNO TO BAKERSFIELD**
KAWEAH SUBSECTION
ALIGNMENT K6
STA. 2422+00 TO 2478+00
PLAN AND PROFILE

CONTRACT NO.
HSR 06-0003
DRAWING NO.
CB1284
SCALE
AS SHOWN
SHEET NO.
10 OF 16



PLAN



PROFILE

STATION	2478+00	2480+00	2490+00	2500+00	2510+00	2520+00	2530+00	2534+00	TOTAL
Exc									
Emb									

c:\pwworking\hmm\external\alexander.poling-arup.com\dms70811\FB-CB-1285-K6.dgn

REV	DATE	BY	CHK	APP	DESCRIPTION

DESIGNED BY
A. POLING
DRAWN BY
J. BORGHESI
CHECKED BY
D. HUNT
IN CHARGE
R. COFFIN
DATE
12/31/13

**RECORD SET 15%
DESIGN SUBMISSION**

**NOT FOR
CONSTRUCTION**

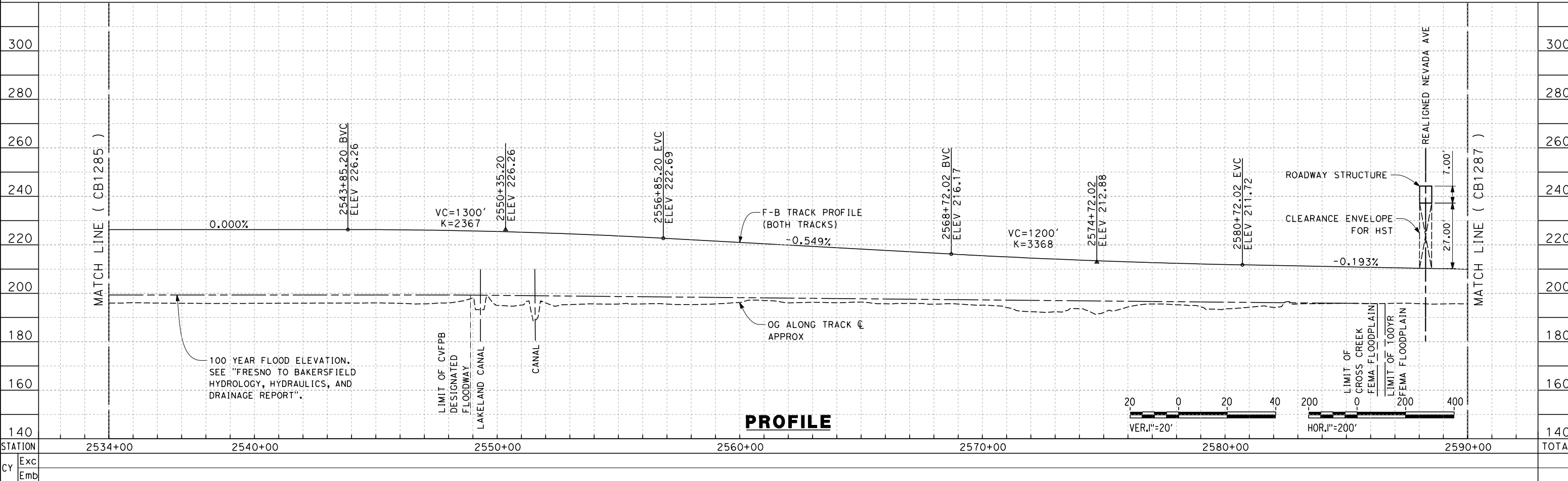
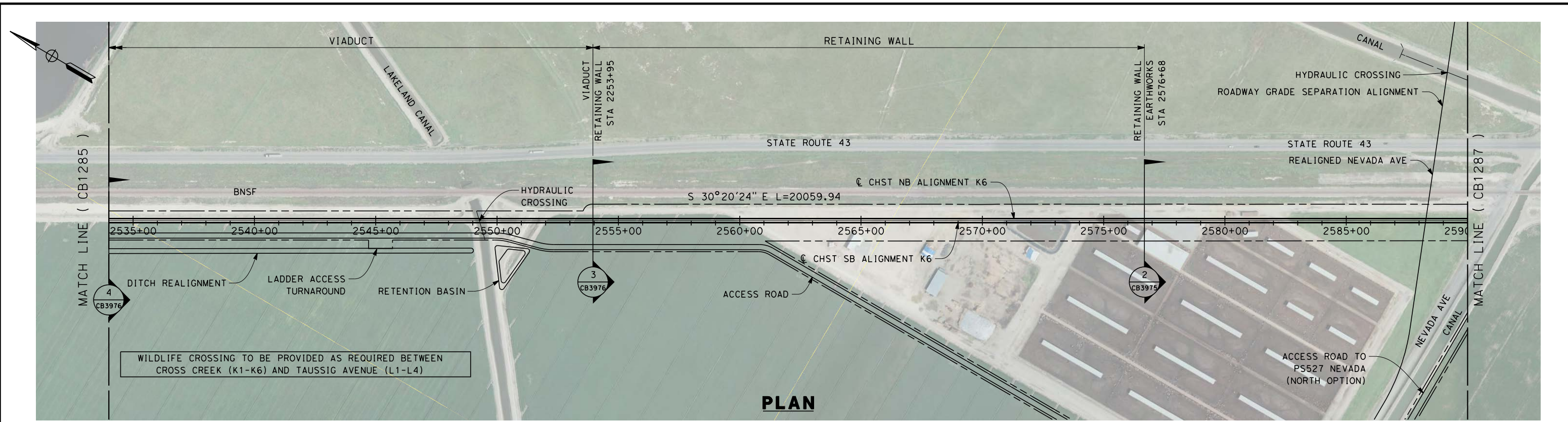


**CALIFORNIA HIGH-SPEED TRAIN PROJECT
FRESNO TO BAKERSFIELD**

KAWEAH SUBSECTION
ALIGNMENT K6
STA. 2478+00 TO 2534+00
PLAN AND PROFILE

CONTRACT NO.
HSR 06-0003
DRAWING NO.
CB1285
SCALE
AS SHOWN
SHEET NO.
11 OF 16

c:\pwworking\hmm\external\alexander.poling-arup.com\dms70811\FB-CB-1286-K6.dgn alexander.poling 12/11/2013 4:05:30 PM



REV	DATE	BY	CHK	APP	DESCRIPTION

DESIGNED BY
A. POLING
DRAWN BY
J. BORGHESI
CHECKED BY
D. HUNT
IN CHARGE
R. COFFIN
DATE
12/31/13

**RECORD SET 15%
DESIGN SUBMISSION**

**NOT FOR
CONSTRUCTION**

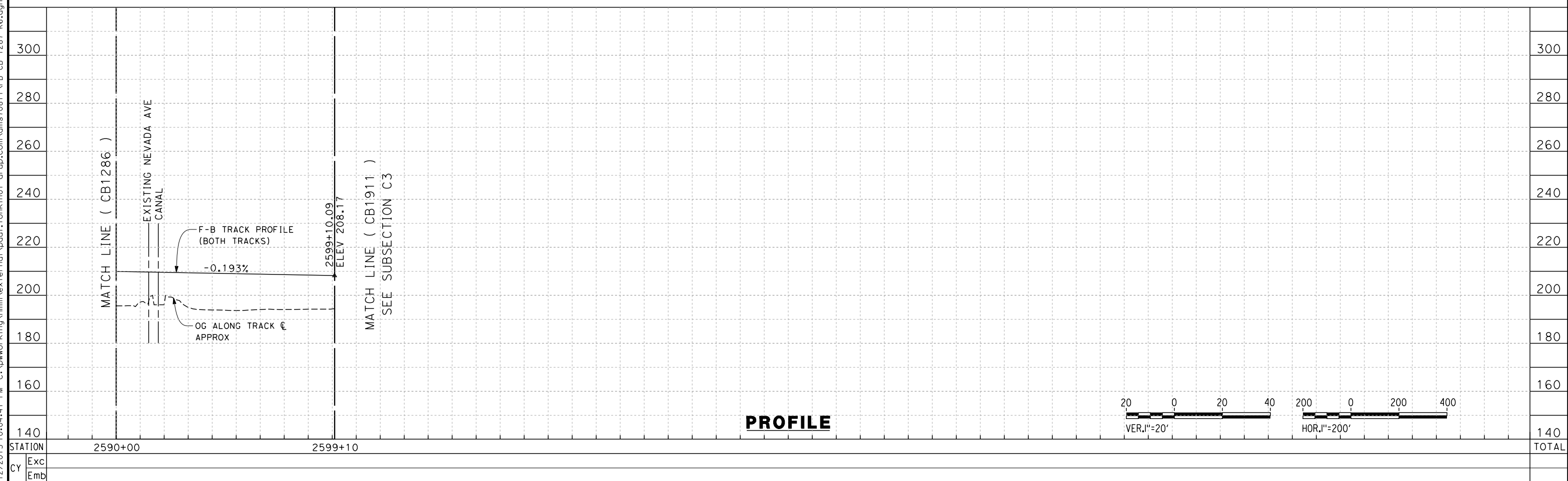


**CALIFORNIA HIGH-SPEED TRAIN PROJECT
FRESNO TO BAKERSFIELD**

KAWEAH SUBSECTION
ALIGNMENT K6
STA. 2534+00 TO 2590+00
PLAN AND PROFILE

CONTRACT NO.
HSR 06-0003
DRAWING NO.
CB1286
SCALE
AS SHOWN
SHEET NO.
12 OF 16

12/12/2013 10:04:41 PM c:\pwworking\hmm\external\paul.tonkin\01-arup.com\dms70811\FB-CB-1287-K6.dgn paul.tonkin



REV	DATE	BY	CHK	APP	DESCRIPTION

DESIGNED BY
A. POLING
DRAWN BY
J. BORGHESI
CHECKED BY
D. HUNT
IN CHARGE
R. COFFIN
DATE
12/31/13

**RECORD SET 15%
DESIGN SUBMISSION**

**NOT FOR
CONSTRUCTION**

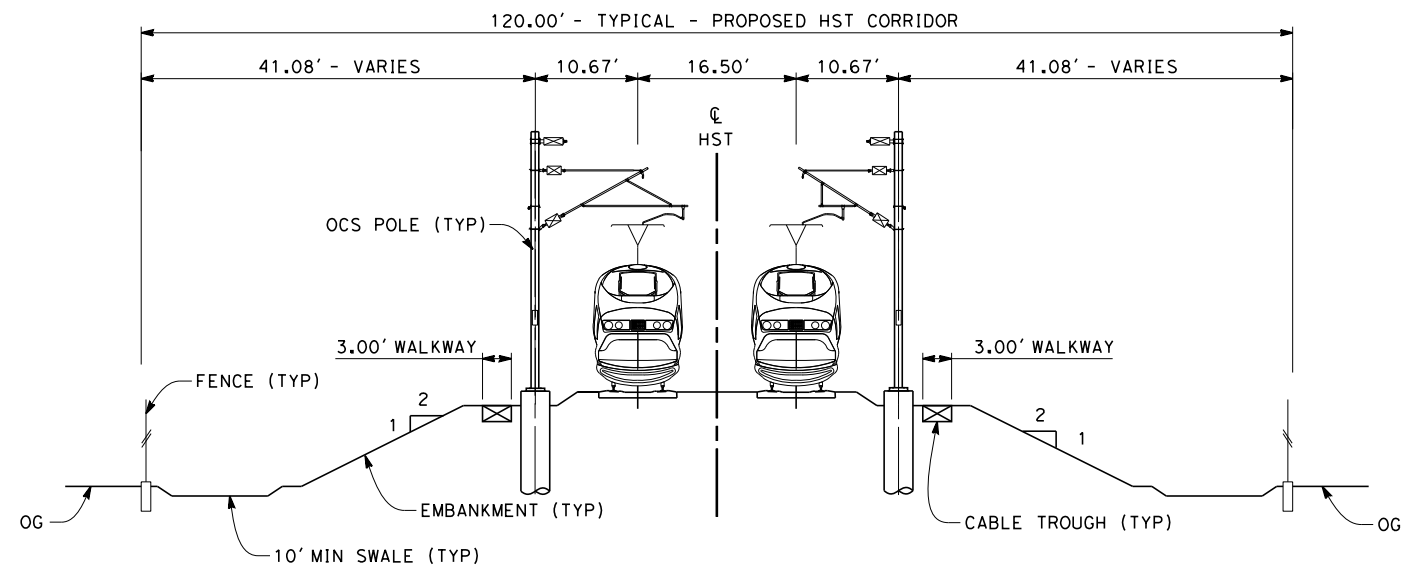


**CALIFORNIA HIGH-SPEED TRAIN PROJECT
FRESNO TO BAKERSFIELD**

KAWEAH SUBSECTION
ALIGNMENT K6
STA. 2590+00 TO 2599+10
PLAN AND PROFILE

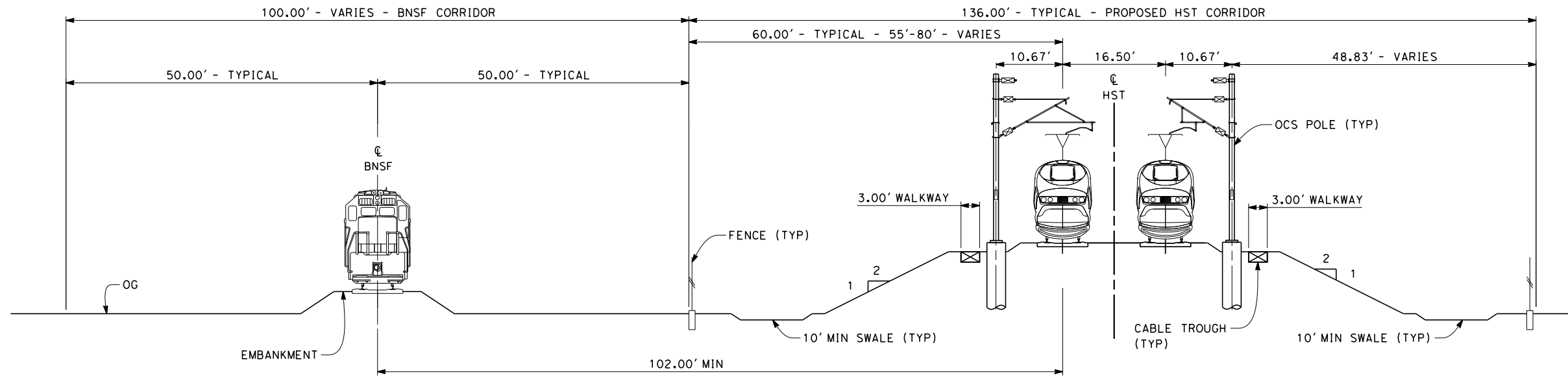
CONTRACT NO.
HSR 06-0003
DRAWING NO.
CB1287
SCALE
AS SHOWN
SHEET NO.
13 OF 16

- NOTES:
1. TRACKFORM SHOWN IS INDICATIVE.
 2. SUPERELEVATION IS NOT SHOWN. THE AMOUNT OF APPLIED SUPERELEVATION IS SHOWN IN THE CURVE DATA TABLES.



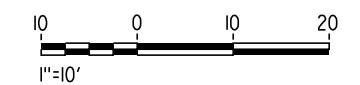
SECTION 1

TWIN TRACK AT GRADE
 STA 1974+00 THROUGH STA 2376+75



SECTION 2

TWIN TRACK, ADJACENT TO SINGLE TRACK BNSF
 STA 2376+75 THROUGH STA 2385+94
 STA 2576+68 THROUGH STA 2599+10



c:\pwworking\hmm\external\alexander.poling-arup.com\dms70811\FB-CB-3975-K6.dgn
 \$PLTDRVS\$
 \$PENTBLS\$
 2013/11/20 10:07:33 PM

REV	DATE	BY	CHK	APP	DESCRIPTION

DESIGNED BY
A. POLING
 DRAWN BY
J. BORGHESI
 CHECKED BY
D. HUNT
 IN CHARGE
R. COFFIN
 DATE
12/31/13

**RECORD SET 15%
 DESIGN SUBMISSION**

**NOT FOR
 CONSTRUCTION**



**CALIFORNIA HIGH-SPEED TRAIN PROJECT
 FRESNO TO BAKERSFIELD**

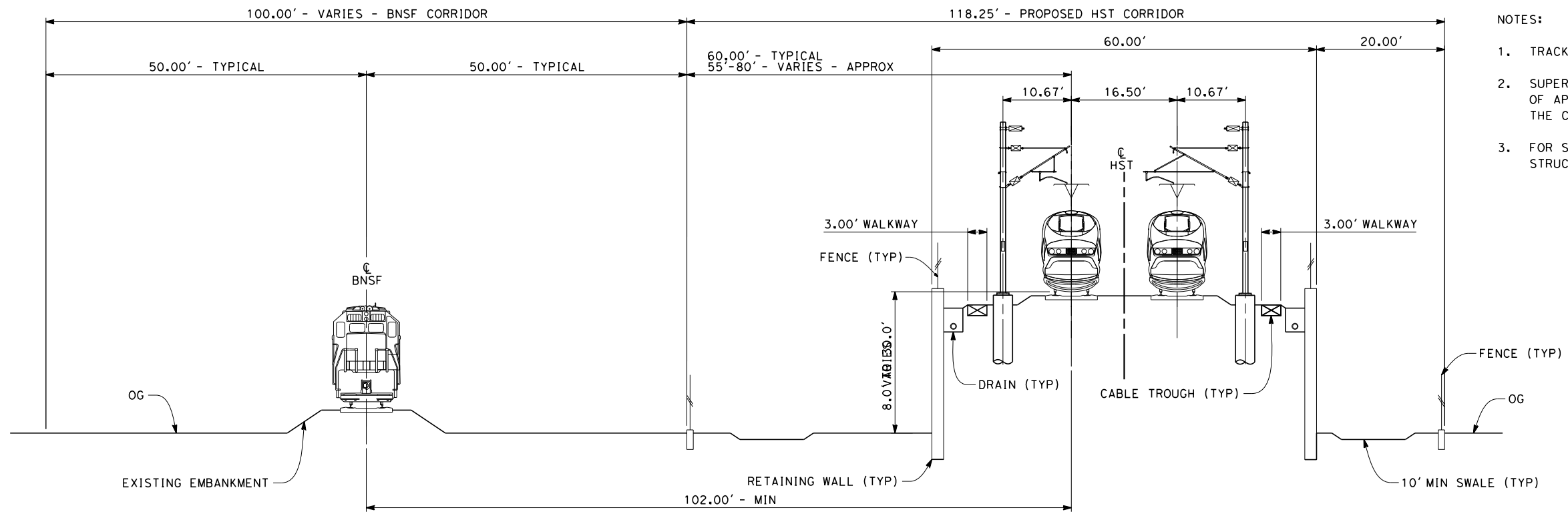
KAWEAH SUBSECTION
 ALIGNMENT K6
 TYPICAL SECTIONS

CONTRACT NO.
HSR 06-0003

DRAWING NO.
CB3975

SCALE
AS SHOWN

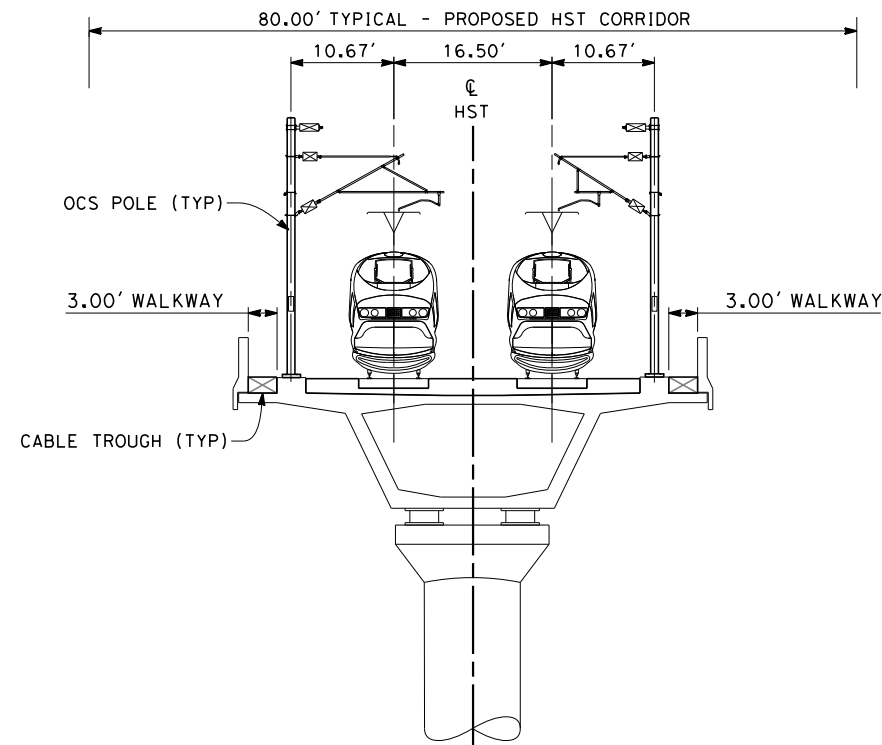
SHEET NO.
14 OF 16



- NOTES:
1. TRACKFORM SHOWN IS INDICATIVE.
 2. SUPERELEVATION IS NOT SHOWN. THE AMOUNT OF APPLIED SUPERELEVATION IS SHOWN IN THE CURVE DATA TABLES.
 3. FOR STRUCTURE DIMENSIONS SEE STRUCTURAL CROSS SECTIONS.

SECTION 3

TWIN TRACK ON RETAINED EMBANKMENT ADJACENT TO BNSF
 STA 2385+94 THROUGH STA 2404+00
 STA 2553+95 THROUGH STA 2576+68



SECTION 4

TWIN TRACK AERIAL VIADUCT
 STA 2404+00 THROUGH STA 2455+01
 STA 2458+24 THROUGH STA 2553+95



c:\pwworking\hmm\external\alexander.poling-arup.com\dms70811\FB-CB-3976-K6.dgn \$PLTDRVS\$ \$PENTBLS\$ 12/31/13 11:07:55 PM

REV	DATE	BY	CHK	APP	DESCRIPTION

DESIGNED BY
A. POLING

DRAWN BY
J. BORGHESI

CHECKED BY
D. HUNT

IN CHARGE
R. COFFIN

DATE
12/31/13

**RECORD SET 15%
DESIGN SUBMISSION**

**NOT FOR
CONSTRUCTION**



**CALIFORNIA HIGH-SPEED TRAIN PROJECT
FRESNO TO BAKERSFIELD**

KAWEAH SUBSECTION
ALIGNMENT K6
TYPICAL SECTIONS

CONTRACT NO.
HSR 06-0003

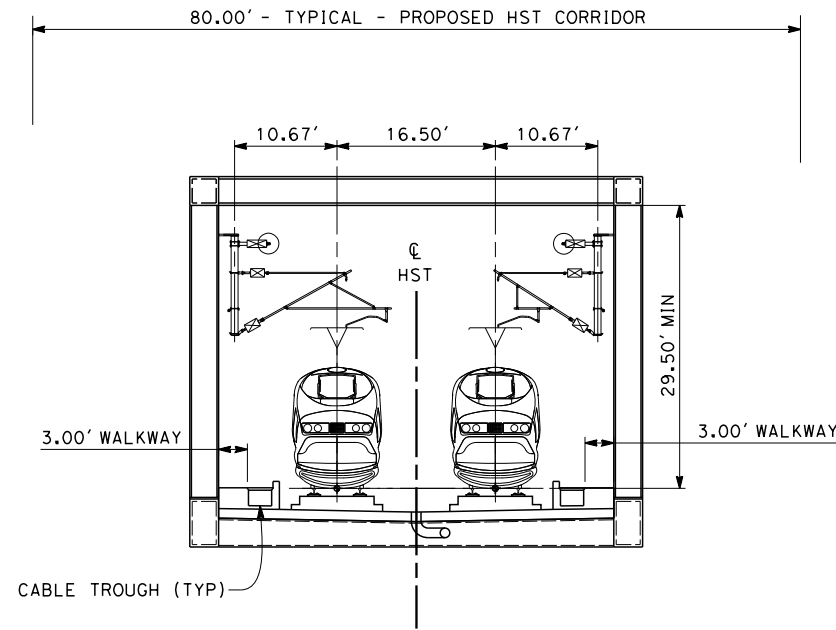
DRAWING NO.
CB3976

SCALE
AS SHOWN

SHEET NO.
15 OF 16

NOTES:

1. TRACKFORM SHOWN IS INDICATIVE.
2. SUPERELEVATION IS NOT SHOWN. THE AMOUNT OF APPLIED SUPERELEVATION IS SHOWN IN THE CURVE DATA TABLES.
3. FOR STRUCTURE DIMENSIONS SEE STRUCTURAL CROSS SECTIONS.



SECTION 5

TWIN TRACK TRUSS
STA 2455+01 THROUGH STA 2458+24



c:\pwworking\hmm\external\paul.tonkin\01-arup.com\dms70811\FB-CB-3977-K6.dgn paul.tonkin 12/12/2013 10:08:35 PM \$PLTDRVS\$ \$PENTBLS\$

REV	DATE	BY	CHK	APP	DESCRIPTION

DESIGNED BY
A. POLING

DRAWN BY
J. BORGHESI

CHECKED BY
D. HUNT

IN CHARGE
R. COFFIN

DATE
12/31/13

**RECORD SET 15%
DESIGN SUBMISSION**

**NOT FOR
CONSTRUCTION**



**CALIFORNIA HIGH-SPEED TRAIN PROJECT
FRESNO TO BAKERSFIELD**

KAWEAH SUBSECTION
ALIGNMENT K6
TYPICAL SECTIONS

CONTRACT NO.
HSR 06-0003

DRAWING NO.
CB3977

SCALE
AS SHOWN

SHEET NO.
16 OF 16