

2014 FRA **Rail Program Delivery**



Southeast Region

Randy Brown
FRA Project Manager

Jason Orthner
NCDOT Rail Division

FRA Regional Team

Regional Manager:	Todd McIntyre
Project Manager:	Randy Brown
Grant Manager/Environmental:	John Winkle
Engineer:	Khalid Salahuddin
Planner:	Kyle Gradinger
Counsel:	Dan Orlaskey
Safety Officer:	Howard Foster
MTAC:	Transystems

State Partners

Virginia DRPT

North Carolina DOT

South Carolina DOT

Georgia DOT

Florida DOT

Alabama DECA*

**not shown*



2014 FRA Rail Program Delivery

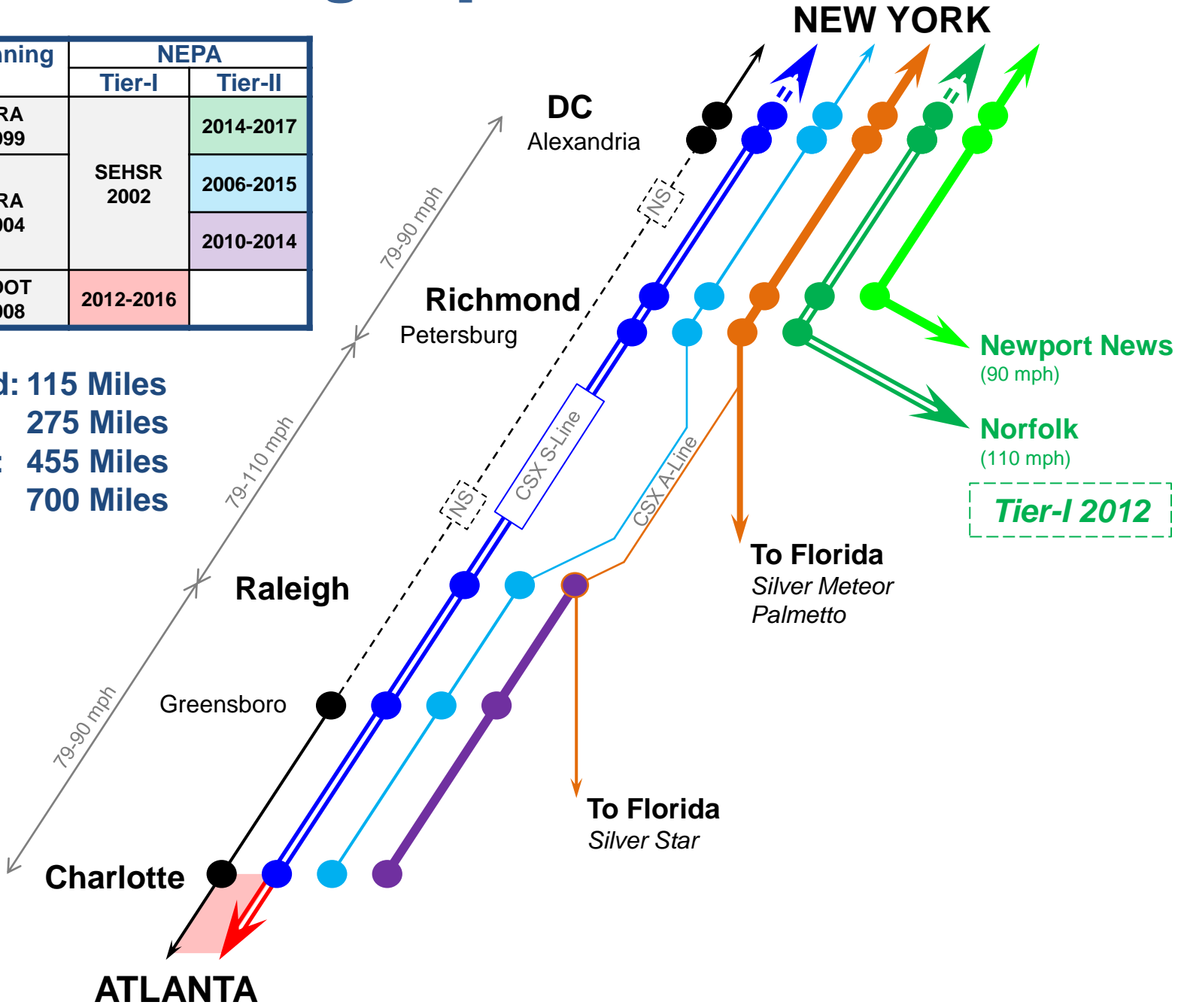


Corridor Development

Southeast High Speed Rail Corridor

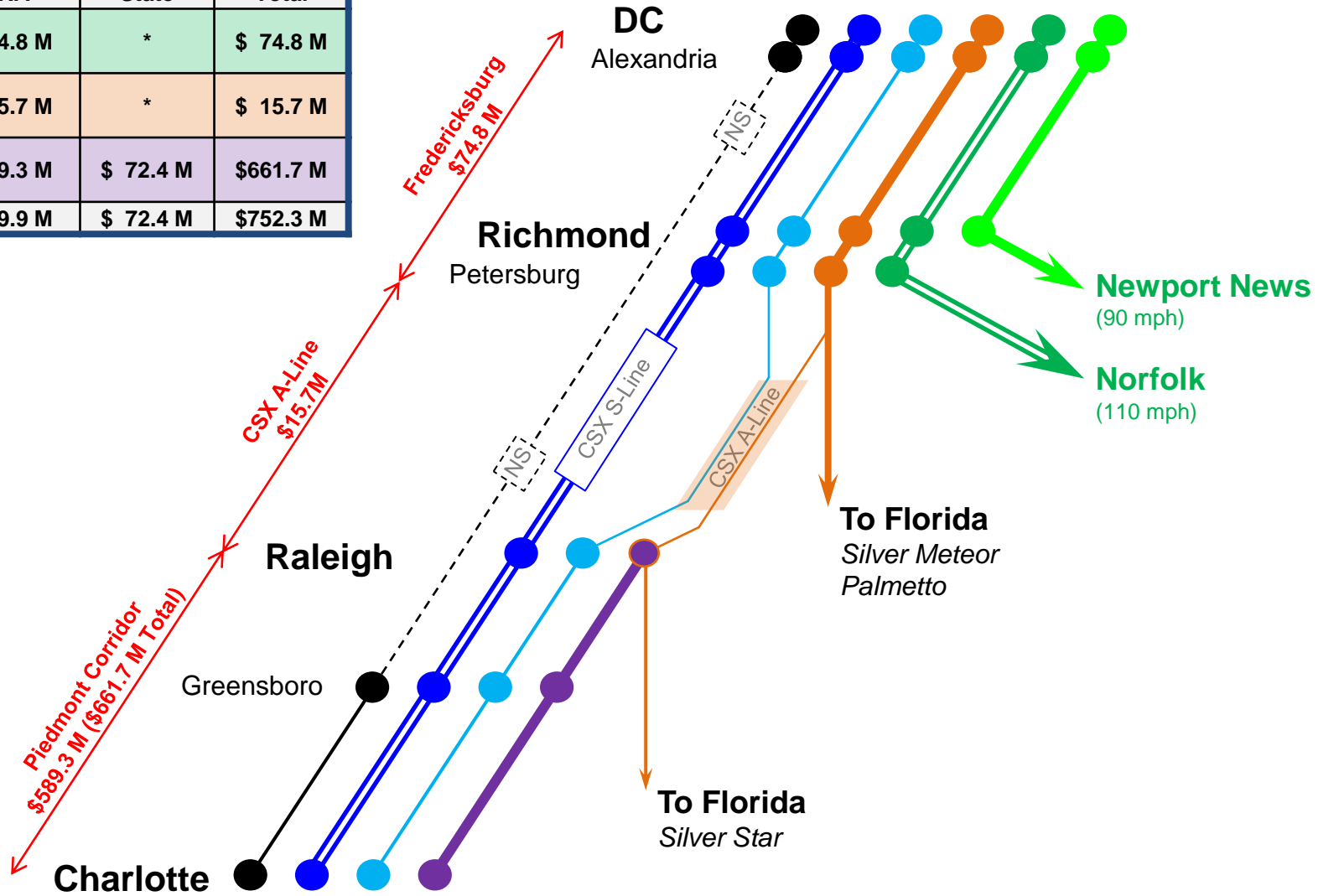
	Planning	NEPA	
		Tier-I	Tier-II
DC	FRA 1999	SEHSR 2002	2014-2017
RICHMOND			2006-2015
RALEIGH	2010-2014		
CHARLOTTE	2012-2016		
ATLANTA	GDOT 2008		

DC - Richmond: 115 Miles
Raleigh: 275 Miles
Charlotte: 455 Miles
Atlanta: 700 Miles



Capital Investment

	Federal Projects		
	FRA	State	Total
DC-Richmond	\$ 74.8 M	*	\$ 74.8 M
Richmond-Raleigh	\$ 15.7 M	*	\$ 15.7 M
Raleigh-Charlotte	\$589.3 M	\$ 72.4 M	\$661.7 M
	\$679.9 M	\$ 72.4 M	\$752.3 M



Capital Investment

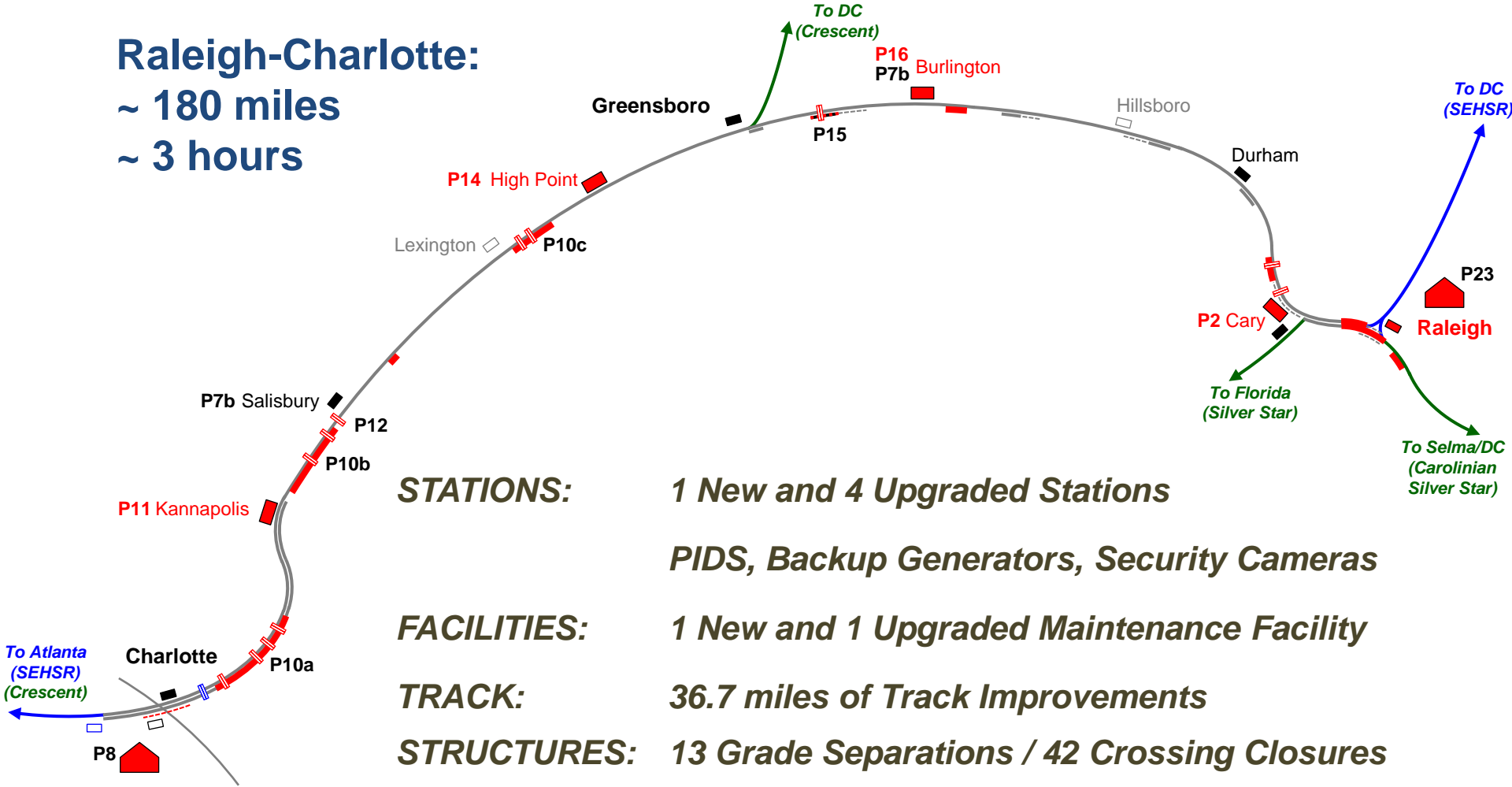
- DC-Richmond:** Freight/Passenger/Commuter Capacity
- *11-miles of Third Track*
- Richmond-Raleigh:** Freight/Passenger Congestion Mitigation
- *3 Universal Interlockings on CSX A-Line*
- Raleigh-Charlotte:** Service Enhancement and Expansion
3rd and 4th Piedmont Frequency

NCDOT Piedmont Improvement Program

Raleigh-Charlotte:

~ 180 miles

~ 3 hours



STATIONS:

1 New and 4 Upgraded Stations

PIDS, Backup Generators, Security Cameras

FACILITIES:

1 New and 1 Upgraded Maintenance Facility

TRACK:

36.7 miles of Track Improvements

STRUCTURES:

13 Grade Separations / 42 Crossing Closures

EQUIPMENT:

7 Rehabilitated Locomotives

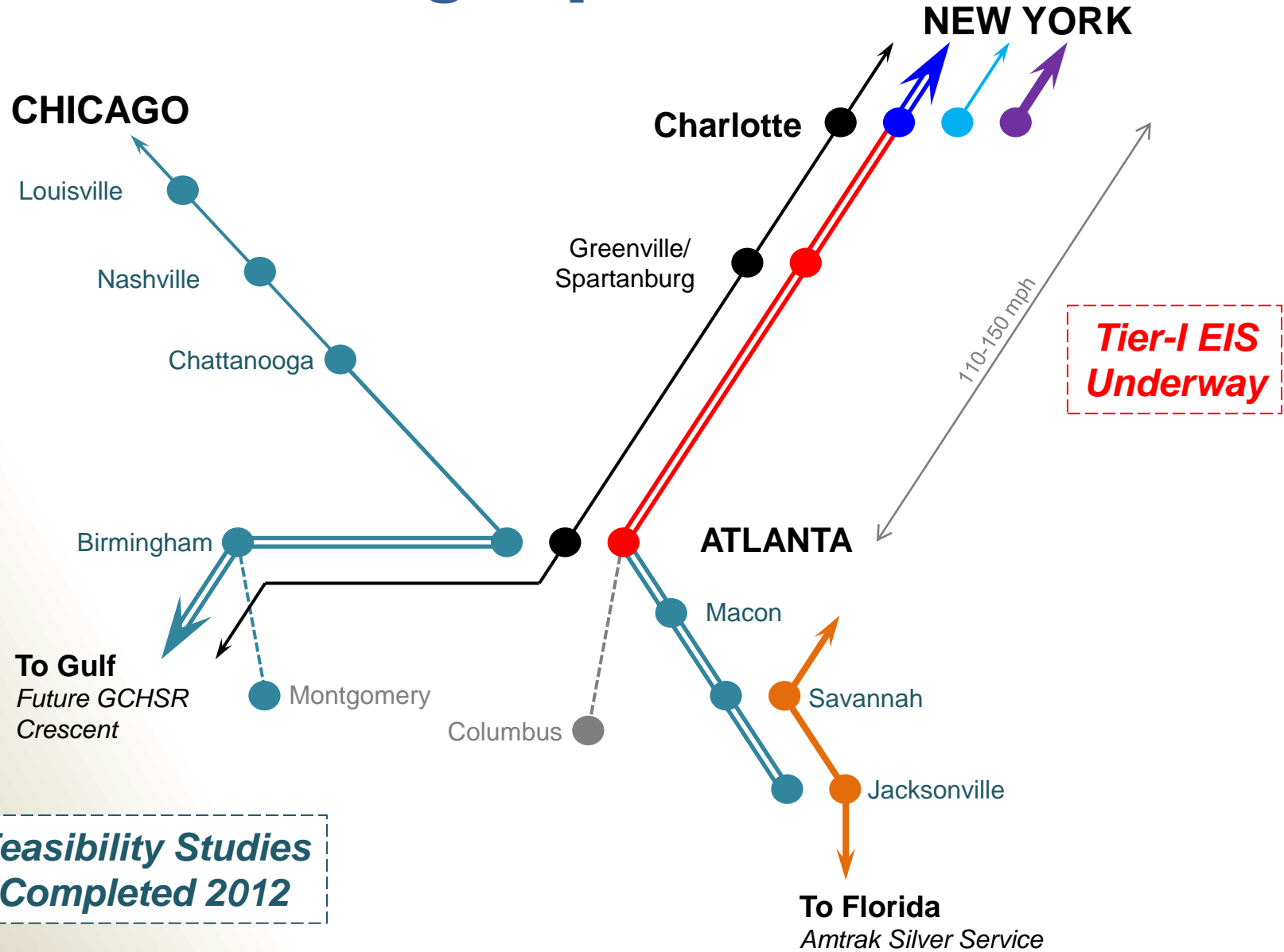
5 Cab-Control Cars / 12 Coaches

2014 FRA Rail Program Delivery



Planning

Southeast High Speed Rail Corridor





Cary Depot



Klumac Road Grade Separation: Bypass Track



Haydock to Junker Double Track Project: Rocky River Bridge



Bowers to Lake Double Track Project: Turner Road Grade Separation